

# Product Datasheet

## Pax6 Antibody NB300-750

Unit Size: 100 ug

Store at -20C. Avoid freeze-thaw cycles.

[www.novusbio.com](http://www.novusbio.com)



[technical@novusbio.com](mailto:technical@novusbio.com)

**Reviews: 4 Publications: 5**

Protocols, Publications, Related Products, Reviews, Research Tools and Images at:  
[www.novusbio.com/NB300-750](http://www.novusbio.com/NB300-750)

Updated 9/9/2025 v.20.1

**Earn rewards for product  
reviews and publications.**

Submit a publication at [www.novusbio.com/publications](http://www.novusbio.com/publications)

Submit a review at [www.novusbio.com/reviews/destination/NB300-750](http://www.novusbio.com/reviews/destination/NB300-750)



**NB300-750**

Pax6 Antibody

| Product Information     |  |
|-------------------------|--|
| Unit Size               | 100 ug                                   |
| Concentration           | 1 mg/ml                                  |
| Storage                 | Store at -20C. Avoid freeze-thaw cycles. |
| Clonality               | Polyclonal                               |
| Preservative            | 0.05% Sodium Azide                       |
| Isotype                 | IgG                                      |
| Purity                  | Immunogen affinity purified              |
| Buffer                  | PBS with 1 mg/ml BSA                     |
| Target Molecular Weight | 47 kDa                                   |

| Product Description     |   |
|-------------------------|---|
| Description             | Novus Biologicals Rabbit Pax6 Antibody (NB300-750) is a polyclonal antibody validated for use in IHC, WB, ICC/IF and IP. Anti-Pax6 Antibody: Cited in 4 publications. All Novus Biologicals antibodies are covered by our 100% guarantee. |
| Host                    | Rabbit  |
| Gene ID                 | 5080  |
| Gene Symbol             | PAX6  |
| Species                 | Human, Mouse, Rat, Fish, Primate, Monkey, Sheep   |
| Reactivity Notes        | Fish reactivity reported in scientific literature (PMID: 29888788).   |
| Marker                  | Neural Marker   |
| Specificity/Sensitivity | Detects a ~47 kDa protein representing PAX6 (Schwann Cell Marker) from rat whole eye extracts and ovine retinal extracts.   |
| Immunogen               | Synthetic peptide corresponding to residues C R(267) E E K L R N Q R R Q A S N T P S H I(285) of mouse PAX6.  |

| Product Application Details |   |
|-----------------------------|---|
| Applications                | Western Blot, Immunocytochemistry/ Immunofluorescence, Immunohistochemistry, Immunoprecipitation                  |
| Recommended Dilutions       | Western Blot 1:1000, Immunohistochemistry, Immunocytochemistry/ Immunofluorescence 1:50, Immunoprecipitation 5 ug |
| Application Notes           | Use in Immunohistochemistry reported in scientific literature (PMID: 22837015).                                   |



**Images**

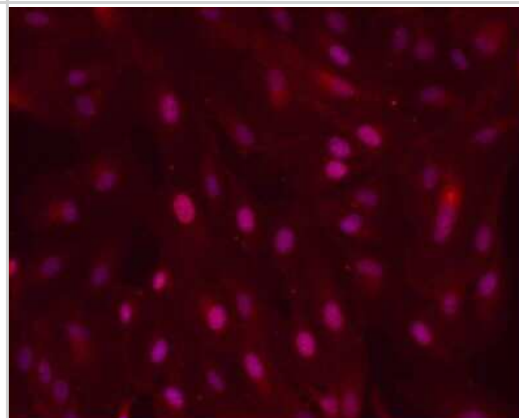
Western Blot: Pax6 Antibody [NB300-750] - Analysis of sheep retinal extract

**Fig. 2**

47 kDa



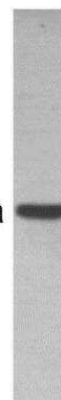
Immunocytochemistry/Immunofluorescence: Pax6 Antibody [NB300-750] - ARPE-19 monolayer on glass substrate. Fixative Methanol Blocking Goat Serum. Dilution 1:100. Incubation 1h @ RT. This image was submitted via customer Review.



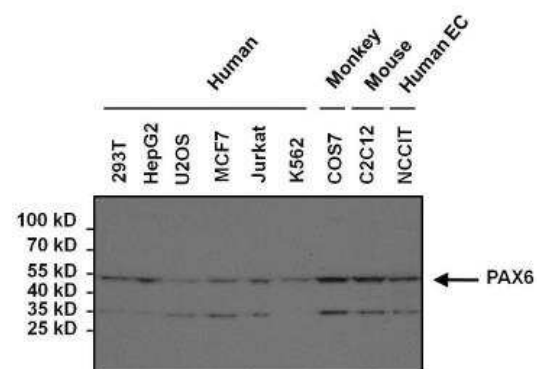
Western Blot: Pax6 Antibody [NB300-750] - Analysis of rat whole eye extract

**Fig. 1**

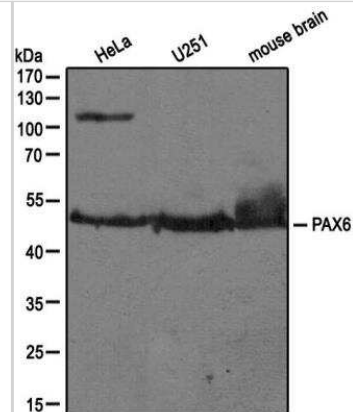
47 kDa



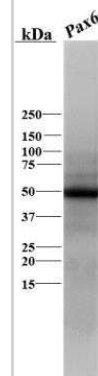
Western Blot: Pax6 Antibody [NB300-750] - Analysis of various human, mouse and non-human primate whole cell lysates.



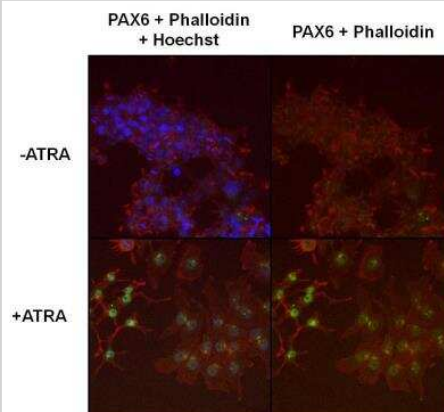
Western Blot: Pax6 Antibody [NB300-750] - Analysis of extracts from HeLa, U251 and mouse brain using PAX6 antibody (NB300-750, 1:100).



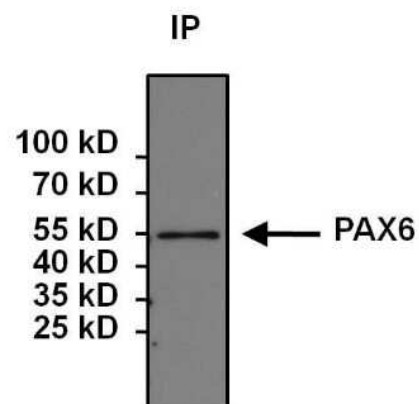
Western Blot: Pax6 Antibody [NB300-750] - Analysis of Pax6 in skate (*Leucoraja erinacea*) brain lysate using anti-Pax6 antibody. Image from verified customer review.



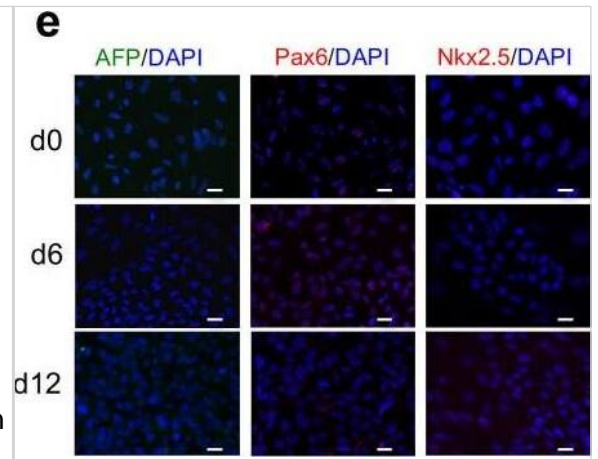
Immunocytochemistry/Immunofluorescence: Pax6 Antibody [NB300-750] - Formalin fixed cells were permeabilized with 0.1% Triton X-100 in TBS for 10 minutes at room temperature and blocked with 1% Blocker BSA for 15 minutes at room temperature. Cells were probed with a PAX6 polyclonal antibody at a dilution of 1:400 for 30 minutes at room temperature. F-Actin (red) was stained with DyLight 554 Phalloidin and nuclei were stained with Hoechst 33342 dye.



Immunoprecipitation: Pax6 Antibody [NB300-750] - Analysis of PAX6 was performed on 293T cells. Antigen: antibody complexes were formed by incubating 500ug whole cell lysate with 5ug of PAX6 polyclonal antibody overnight on a rocking platform at 4C. The immune complexes were captured on 50ul Protein A/G Plus Agarose, washed extensively, and eluted with 5X Lane Marker Reducing Sample Buffer. Samples were resolved on a 4-20% Tris-HCl polyacrylamide gel, transferred to a PVDF membrane, and blocked with 5% BSA/TBS-0.1% Tween for at least 1 hour. The membrane was probed with a PAX6 monoclonal antibody at a dilution of 1:1000 overnight rotating at 4C, washed in TBST, and probed with Clean-Blot IP Detection Reagent at a dilution of 1:1000 for at least one hour.



Immunocytochemistry/ Immunofluorescence: Pax6 Antibody [NB300-750] - Stepwise differentiation of human iPSCs towards renal progenitor cells (RPCs). (a) Schematic description of the two-stage protocol applied to iPSC-renal commitment. (b, c, d, e) Immunofluorescence of iPSCs (derived from retroviral transfected dermal fibroblasts) exposed to differentiating media. (b) The pluripotency markers SSEA4, TRA-1-81, Nanog, ME marker T(Bry) & IM marker Osr1. (c) IM & MM marker expression as Wt1, Pax8, Pax2, Six2 & Sall1. (d) Renal progenitor markers CD133, CD24, NCAM, glomerular epithelial marker Claudin1 & proximal tubular epithelial markers AQP1, GGT1. (e) Markers identifying endodermal AFP, ectodermal Pax6, & cardiac mesodermal Nkx2.5 derivation. Nuclei are stained with DAPI (blue). Scale bars: 20  $\mu$ m (b, c, d, e). Image collected & cropped by CiteAb from the following publication (<https://www.nature.com/articles/srep08826>), licensed under a CC-BY license. Not internally tested by Novus Biologicals.



## Publications

Robles DA, Boreland AJ, Pang ZP, Zahn JD A Cerebral Organoid Connectivity Apparatus to Model Neuronal Tract Circuitry Micromachines 2021-12-17 [PMID: 34945423] (IF/IHC, Human)

Suriano CM. Developmental Evidence for the Evolutionary Relationship of Cerebellum and Cerebellum-like Structures in an Elasmobranch Fish. Thesis. 2018-01-01 (WB)

Suriano CM, Bodznick D. Evidence for generative homology of cerebellum and cerebellum-like structures in an elasmobranch fish based on Pax6, Cbln1 and Grid2 expression J. Comp. Neurol. 2018-06-11 [PMID: 29888788] (Fish)

Imberti B, Tomasoni S, Ciampi O et al. Renal progenitors derived from human iPSCs engraft and restore function in a mouse model of acute kidney injury Sci Rep 2015-03-06 [PMID: 25744951] (ICC/IF, Human)

Pacal M, Bremner R. Mapping differentiation kinetics in the mouse retina reveals an extensive period of cell cycle protein expression in post-mitotic newborn neurons Dev Dyn 2012-10-01 [PMID: 22837015] (ICC/IF, IF/IHC, Mouse)



### **Novus Biologicals USA**

10730 E. Briarwood Avenue  
Centennial, CO 80112  
USA  
Phone: 303.730.1950  
Toll Free: 1.888.506.6887  
Fax: 303.730.1966  
nb-customerservice@bio-techne.com

### **Bio-Techne Canada**

21 Canmotor Ave  
Toronto, ON M8Z 4E6  
Canada  
Phone: 905.827.6400  
Toll Free: 855.668.8722  
Fax: 905.827.6402  
canada.inquires@bio-techne.com

### **Bio-Techne Ltd**

19 Barton Lane  
Abingdon Science Park  
Abingdon, OX14 3NB, United Kingdom  
Phone: (44) (0) 1235 529449  
Free Phone: 0800 37 34 15  
Fax: (44) (0) 1235 533420  
info.EMEA@bio-techne.com

### **General Contact Information**

www.novusbio.com  
Technical Support: nb-technical@bio-techne.com  
Orders: nb-customerservice@bio-techne.com  
General: novus@novusbio.com

### **Products Related to NB300-750**

---

|             |   |
|-------------|---|
| NBP2-33376H | Blue Marker Antibody (6F4-F6) [HRP]                 |
| HAF008      | Goat anti-Rabbit IgG Secondary Antibody [HRP]       |
| NB7160      | Goat anti-Rabbit IgG (H+L) Secondary Antibody [HRP] |
| NBP2-24891  | Rabbit IgG Isotype Control                          |

---

### **Limitations**

This product is for research use only and is not approved for use in humans or in clinical diagnosis. Primary Antibodies are guaranteed for 1 year from date of receipt.

For more information on our 100% guarantee, please visit [www.novusbio.com/guarantee](http://www.novusbio.com/guarantee)

Earn gift cards/discounts by submitting a review: [www.novusbio.com/reviews/submit/NB300-750](http://www.novusbio.com/reviews/submit/NB300-750)

Earn gift cards/discounts by submitting a publication using this product:  
[www.novusbio.com/publications](http://www.novusbio.com/publications)

