

Product Datasheet

ERR beta/NR3B2 Antibody

NB300-748

Unit Size: 100ug

Store at -20C. Avoid freeze-thaw cycles.

www.novusbio.com



technical@novusbio.com

Reviews: 1 Publications: 1

Protocols, Publications, Related Products, Reviews, Research Tools and Images at:
www.novusbio.com/NB300-748

Updated 9/9/2025 v.20.1

Earn rewards for product
reviews and publications.

Submit a publication at www.novusbio.com/publications

Submit a review at www.novusbio.com/reviews/destination/NB300-748



NB300-748

ERR beta/NR3B2 Antibody

Product Information	
Unit Size	100ug
Concentration	1 mg/ml
Storage	Store at -20C. Avoid freeze-thaw cycles.
Clonality	Polyclonal
Preservative	0.05% Sodium Azide
Isotype	IgG
Purity	Immunogen affinity purified
Buffer	PBS with 1 mg/ml BSA

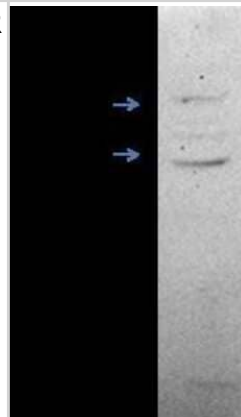
Product Description	
Description	Novus Biologicals Rabbit ERR beta/NR3B2 Antibody (NB300-748) is a polyclonal antibody validated for use in WB and ICC/IF. Anti-ERR beta/NR3B2 Antibody: Cited in 1 publication. All Novus Biologicals antibodies are covered by our 100% guarantee.
Host	Rabbit
Gene ID	2103
Gene Symbol	ESRRB
Species	Human, Rat
Specificity/Sensitivity	Estrogen-Related Receptor beta
Immunogen	Synthetic peptide corresponding to residues D(376) Y E L S Q R H E E P R R (388) of mouse ERR2.

Product Application Details	
Applications	Western Blot, Immunocytochemistry/ Immunofluorescence
Recommended Dilutions	Western Blot 2 ug/ml, Immunocytochemistry/ Immunofluorescence 1:50 - 1:200

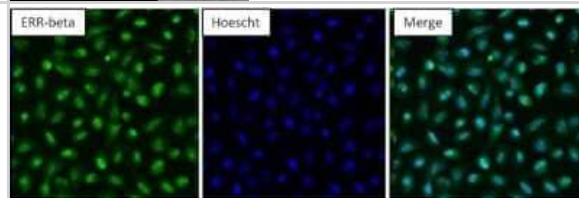


Images

Western Blot: ERR beta/NR3B2 Antibody [NB300-748] - Analysis of ERR beta in HeLa whole cell lysate. Image courtesy of anonymous customer.



Immunocytochemistry/Immunofluorescence: ERR beta/NR3B2 Antibody [NB300-748] - Analysis of Estrogen Related Receptor beta (green) in NRK cells. Formalin-fixed cells were permeabilized with 0.1% Triton X-100 in TBS for 10 minutes at room temperature and blocked with 5% normal goat serum for 15 minutes at room temperature. Cells were probed with a Estrogen Related Receptor beta polyclonal antibody at a dilution of 1:100 for at least 1 hour at room temperature, washed with PBS, and incubated with DyLight 488-conjugated goat anti-rabbit IgG secondary antibody at a dilution of 1:400 for 30 minutes at room temperature. Nuclei (blue) were stained with Hoechst 33342 dye.



Western Blot: ERR beta/NR3B2 Antibody [NB300-748] - Analysis of rat kidney.



Publications

Xu H, Ang YS, Sevilla A et al. Construction and validation of a regulatory network for pluripotency and self-renewal of mouse embryonic stem cells PLoS Comput. Biol. 2014-08-01 [PMID: 25122140] (WB)



Novus Biologicals USA

10730 E. Briarwood Avenue
Centennial, CO 80112
USA
Phone: 303.730.1950
Toll Free: 1.888.506.6887
Fax: 303.730.1966
nb-customerservice@bio-techne.com

Bio-Techne Canada

21 Canmotor Ave
Toronto, ON M8Z 4E6
Canada
Phone: 905.827.6400
Toll Free: 855.668.8722
Fax: 905.827.6402
canada.inquires@bio-techne.com

Bio-Techne Ltd

19 Barton Lane
Abingdon Science Park
Abingdon, OX14 3NB, United Kingdom
Phone: (44) (0) 1235 529449
Free Phone: 0800 37 34 15
Fax: (44) (0) 1235 533420
info.EMEA@bio-techne.com

General Contact Information

www.novusbio.com
Technical Support: nb-technical@bio-techne.com
Orders: nb-customerservice@bio-techne.com
General: novus@novusbio.com

Products Related to NB300-748

NBP2-33376H	Blue Marker Antibody (6F4-F6) [HRP]
HAF008	Goat anti-Rabbit IgG Secondary Antibody [HRP]
NB7160	Goat anti-Rabbit IgG (H+L) Secondary Antibody [HRP]
NBP2-24891	Rabbit IgG Isotype Control

Limitations

This product is for research use only and is not approved for use in humans or in clinical diagnosis. Primary Antibodies are guaranteed for 1 year from date of receipt.

For more information on our 100% guarantee, please visit www.novusbio.com/guarantee

Earn gift cards/discounts by submitting a review: www.novusbio.com/reviews/submit/NB300-748

Earn gift cards/discounts by submitting a publication using this product:
www.novusbio.com/publications

