

Product Datasheet

Fibulin-3/EFEMP1 Antibody

NB300-691-0.05mg

Unit Size: 0.05 mg

Store at 4C short term. Aliquot and store at -20C long term. Avoid freeze-thaw cycles.

www.novusbio.com



technical@novusbio.com

Protocols, Publications, Related Products, Reviews, Research Tools and Images at:
www.novusbio.com/NB300-691

Updated 9/9/2025 v.20.1

Earn rewards for product
reviews and publications.

Submit a publication at www.novusbio.com/publications

Submit a review at www.novusbio.com/reviews/destination/NB300-691



NB300-691-0.05mg**Fibulin-3/EFEMP1 Antibody**

Product Information	
Unit Size	0.05 mg
Concentration	Please see the vial label for concentration. If unlisted please contact technical services.
Storage	Store at 4C short term. Aliquot and store at -20C long term. Avoid freeze-thaw cycles.
Clonality	Polyclonal
Preservative	0.02% Sodium Azide
Isotype	IgG
Purity	Immunogen affinity purified
Buffer	Tris/Glycine buffer, pH 7.4-7.8, HEPES,BSA 0.5%, glycerol 30%.
Product Description	
Description	Novus Biologicals Rabbit Fibulin-3/EFEMP1 Antibody (NB300-691) is a polyclonal antibody validated for use in IHC, WB, ELISA and IP. All Novus Biologicals antibodies are covered by our 100% guarantee.
Host	Rabbit
Gene ID	2202
Gene Symbol	EFEMP1
Species	Human, Mouse, Rat, Monkey
Specificity/Sensitivity	The Anti EFEMP1 selective was generated against a conserved sequence near the N terminal region that is unique to EFEMP1 protein only. This detects a strong 62 kDa EFEMP1 protein in human.
Immunogen	Synthetic cyclic peptide corresponding to N terminal amino acids 25-42 of Human EFEMP1, peptide was covalently modified. Sequence: TYTQCTDGYEWDVPVRQQC
Product Application Details	
Applications	Western Blot, Immunohistochemistry-Paraffin, ELISA, Immunohistochemistry, Immunoprecipitation
Recommended Dilutions	Western Blot 1:500, ELISA 1:10000, Immunohistochemistry, Immunoprecipitation 1:200, Immunohistochemistry-Paraffin 1:100
Application Notes	Detects a band of approximately 62 kDa (predicted molecular weight: 60 kDa). Not tested in other applications.Optimal dilutions/concentrations should be determined by the end user.

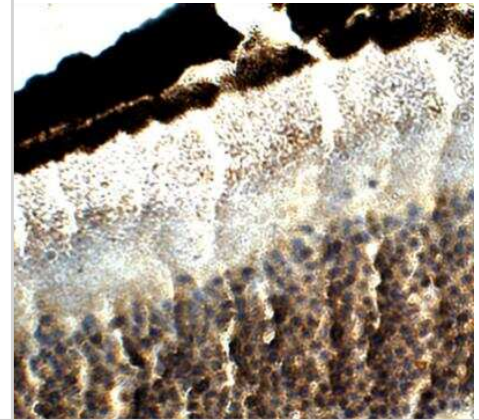


Images

Western Blot: EFEMP1 Antibody [NB300-691] - 62 kDa EFEMP1 from human RPE cells. Antibody diluted 1:500



Immunohistochemistry-Paraffin: Fibulin-3/EFEMP1 Antibody [NB300-691] - 1:50 dilution, DAB (brown) staining and Hematoxylin QS (blue) counterstain. 40X magnification, FFPE section





Novus Biologicals USA

10730 E. Briarwood Avenue
Centennial, CO 80112
USA
Phone: 303.730.1950
Toll Free: 1.888.506.6887
Fax: 303.730.1966
nb-customerservice@bio-techne.com

Bio-Techne Canada

21 Canmotor Ave
Toronto, ON M8Z 4E6
Canada
Phone: 905.827.6400
Toll Free: 855.668.8722
Fax: 905.827.6402
canada.inquires@bio-techne.com

Bio-Techne Ltd

19 Barton Lane
Abingdon Science Park
Abingdon, OX14 3NB, United Kingdom
Phone: (44) (0) 1235 529449
Free Phone: 0800 37 34 15
Fax: (44) (0) 1235 533420
info.EMEA@bio-techne.com

General Contact Information

www.novusbio.com
Technical Support: nb-technical@bio-techne.com
Orders: nb-customerservice@bio-techne.com
General: novus@novusbio.com

Products Related to NB300-691-0.05mg

HAF008	Goat anti-Rabbit IgG Secondary Antibody [HRP]
NB7160	Goat anti-Rabbit IgG (H+L) Secondary Antibody [HRP]
NBP2-24891	Rabbit IgG Isotype Control
NBP2-57871PEP	Fibulin-3/EFEMP1 Recombinant Protein Antigen

Limitations

This product is for research use only and is not approved for use in humans or in clinical diagnosis. Primary Antibodies are guaranteed for 1 year from date of receipt.

For more information on our 100% guarantee, please visit www.novusbio.com/guarantee

Earn gift cards/discounts by submitting a review: www.novusbio.com/reviews/submit/NB300-691

Earn gift cards/discounts by submitting a publication using this product:
www.novusbio.com/publications

