

Product Datasheet

PDE5A Antibody NB300-655-0.05mg

Unit Size: 0.05 mg

Store at 4C short term. Aliquot and store at -20C long term. Avoid freeze-thaw cycles.

www.novusbio.com



technical@novusbio.com

Protocols, Publications, Related Products, Reviews, Research Tools and Images at:
www.novusbio.com/NB300-655

Updated 9/9/2025 v.20.1

Earn rewards for product
reviews and publications.

Submit a publication at www.novusbio.com/publications

Submit a review at www.novusbio.com/reviews/destination/NB300-655



NB300-655-0.05mg

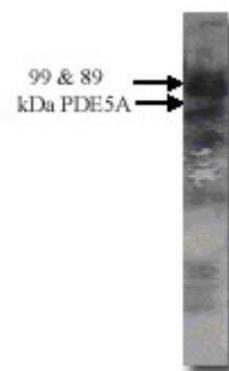
PDE5A Antibody

Product Information	
Unit Size	0.05 mg
Concentration	0.5 mg/ml
Storage	Store at 4C short term. Aliquot and store at -20C long term. Avoid freeze-thaw cycles.
Clonality	Polyclonal
Preservative	0.02% Sodium Azide
Isotype	IgG
Purity	Immunogen affinity purified
Buffer	Tris/Glycine buffer, pH 7.4-7.8, HEPES,BSA 0.5%, glycerol 30%.
Product Description	
Description	Novus Biologicals Rabbit PDE5A Antibody (NB300-655) is a polyclonal antibody validated for use in IHC, WB, ELISA, ICC/IF and IP. All Novus Biologicals antibodies are covered by our 100% guarantee.
Host	Rabbit
Gene ID	8654
Gene Symbol	PDE5A
Species	Human, Mouse, Rat, Chicken
Specificity/Sensitivity	This detects 99 and 89 kDa PDE5A proteins in various tissues.
Immunogen	Synthetic cyclic peptide (common to all PDE5A variants) (Rat).
Product Application Details	
Applications	Western Blot, ELISA, Immunocytochemistry/ Immunofluorescence, Immunohistochemistry, Immunoprecipitation
Recommended Dilutions	Western Blot 1:500, ELISA, Immunohistochemistry, Immunocytochemistry/ Immunofluorescence 1:10-1:500, Immunoprecipitation 1:250
Application Notes	This antibody can be used in Immunoprecipitation and Western Blot. In Western Blot a 89 and 99 kDa bands are seen (predicted MW is 105kDa). Recommended Starting Dilutions*: IP: 1/250 WB: 1/500 Not tested in other applications. *Optimal dilutions should be determined by the end user.

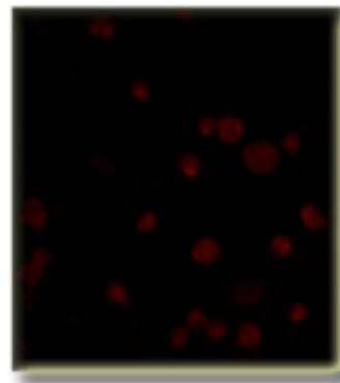


Images

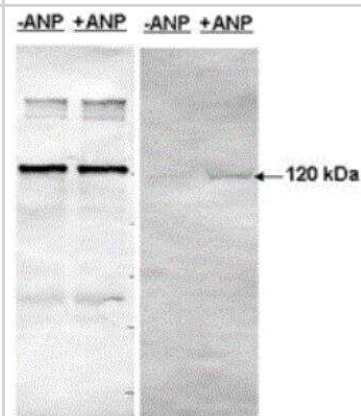
Western Blot: PDE5A Antibody [NB300-655] - 50 ug of rat lung Homogenate.



Immunocytochemistry/Immunofluorescence: PDE5A Antibody [NB300-655] - Cells expressing PDE5 with antibody.



Western Blot: PDE5A Antibody [NB300-655] - Antibody dilution 1:500 in diluObuffer





Novus Biologicals USA

10730 E. Briarwood Avenue
Centennial, CO 80112
USA
Phone: 303.730.1950
Toll Free: 1.888.506.6887
Fax: 303.730.1966
nb-customerservice@bio-techne.com

Bio-Techne Canada

21 Canmotor Ave
Toronto, ON M8Z 4E6
Canada
Phone: 905.827.6400
Toll Free: 855.668.8722
Fax: 905.827.6402
canada.inquires@bio-techne.com

Bio-Techne Ltd

19 Barton Lane
Abingdon Science Park
Abingdon, OX14 3NB, United Kingdom
Phone: (44) (0) 1235 529449
Free Phone: 0800 37 34 15
Fax: (44) (0) 1235 533420
info.EMEA@bio-techne.com

General Contact Information

www.novusbio.com
Technical Support: nb-technical@bio-techne.com
Orders: nb-customerservice@bio-techne.com
General: novus@novusbio.com

Products Related to NB300-655-0.05mg

NBL1-14225	PDE5A Overexpression Lysate
NBP2-33376H	Blue Marker Antibody (6F4-F6) [HRP]
HAF008	Goat anti-Rabbit IgG Secondary Antibody [HRP]
NB7160	Goat anti-Rabbit IgG (H+L) Secondary Antibody [HRP]
NBP2-24891	Rabbit IgG Isotype Control

Limitations

This product is for research use only and is not approved for use in humans or in clinical diagnosis. Primary Antibodies are guaranteed for 1 year from date of receipt.

For more information on our 100% guarantee, please visit www.novusbio.com/guarantee

Earn gift cards/discounts by submitting a review: www.novusbio.com/reviews/submit/NB300-655

Earn gift cards/discounts by submitting a publication using this product:
www.novusbio.com/publications

