

Product Datasheet

PSMA1 Antibody NB300-624

Unit Size: 100ug

Store at -20C. Avoid freeze-thaw cycles.

www.novusbio.com



technical@novusbio.com

Publications: 2

Protocols, Publications, Related Products, Reviews, Research Tools and Images at:
www.novusbio.com/NB300-624

Updated 9/9/2025 v.20.1

Earn rewards for product
reviews and publications.

Submit a publication at www.novusbio.com/publications

Submit a review at www.novusbio.com/reviews/destination/NB300-624



NB300-624

PSMA1 Antibody

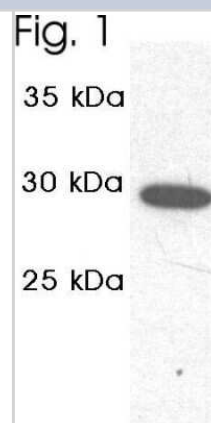
Product Information	
Unit Size	100ug
Concentration	1 mg/ml
Storage	Store at -20C. Avoid freeze-thaw cycles.
Clonality	Polyclonal
Preservative	0.05% Sodium Azide
Isotype	IgG
Purity	Immunogen affinity purified
Buffer	PBS with 1 mg/ml BSA
Target Molecular Weight	30 kDa

Product Description	
Description	Novus Biologicals Rabbit PSMA1 Antibody (NB300-624) is a polyclonal antibody validated for use in WB. Anti-PSMA1 Antibody: Cited in 2 publications. All Novus Biologicals antibodies are covered by our 100% guarantee.
Host	Rabbit
Gene ID	5682
Gene Symbol	PSMA1
Species	Human, Mouse, Rat, Canine, Chicken, Chinese Hamster
Specificity/Sensitivity	Detects proteasome 20S C2 subunit.
Immunogen	Synthetic Peptide: C P(249) A D E P A E K A D E P M E H(263)

Product Application Details	
Applications	Western Blot
Recommended Dilutions	Western Blot 1 ug/ml

Images

Western Blot: Proteasome 20S C2 Antibody [NB300-624] - Analysis of CHO cell extract.

**Publications**

Laporte D, Salin B, Daignan-Fornier B et al. Reversible cytoplasmic localization of the proteasome in quiescent yeast cells. *J Cell Biol*;181(5):737-745. 2008-01-01 [PMID: 18504300]

Vishnyakova, T G, Kurler, R, Bocharov, A V et al. CLA-1 its splicing variant CLA-2 mediate bacterial adhesion cytosolic bacterial invasion in mammalian cells. 103, 16888-16893. 2006-01-01 [PMID: 17071747]



Novus Biologicals USA

10730 E. Briarwood Avenue
Centennial, CO 80112
USA
Phone: 303.730.1950
Toll Free: 1.888.506.6887
Fax: 303.730.1966
nb-customerservice@bio-techne.com

Bio-Techne Canada

21 Canmotor Ave
Toronto, ON M8Z 4E6
Canada
Phone: 905.827.6400
Toll Free: 855.668.8722
Fax: 905.827.6402
canada.inquires@bio-techne.com

Bio-Techne Ltd

19 Barton Lane
Abingdon Science Park
Abingdon, OX14 3NB, United Kingdom
Phone: (44) (0) 1235 529449
Free Phone: 0800 37 34 15
Fax: (44) (0) 1235 533420
info.EMEA@bio-techne.com

General Contact Information

www.novusbio.com
Technical Support: nb-technical@bio-techne.com
Orders: nb-customerservice@bio-techne.com
General: novus@novusbio.com

Products Related to NB300-624

NBP2-33376H	Blue Marker Antibody (6F4-F6) [HRP]
HAF008	Goat anti-Rabbit IgG Secondary Antibody [HRP]
NB7160	Goat anti-Rabbit IgG (H+L) Secondary Antibody [HRP]
NBP2-24891	Rabbit IgG Isotype Control

Limitations

This product is for research use only and is not approved for use in humans or in clinical diagnosis. Primary Antibodies are guaranteed for 1 year from date of receipt.

For more information on our 100% guarantee, please visit www.novusbio.com/guarantee

Earn gift cards/discounts by submitting a review: www.novusbio.com/reviews/submit/NB300-624

Earn gift cards/discounts by submitting a publication using this product:
www.novusbio.com/publications

