

Product Datasheet

NFATC1/NFAT2 Antibody (7A6)

NB300-620

Unit Size: 100 uL

Store at -20C. Avoid freeze-thaw cycles.

www.novusbio.com



technical@novusbio.com

Reviews: 1 **Publications: 5**

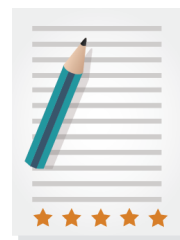
Protocols, Publications, Related Products, Reviews, Research Tools and Images at:
www.novusbio.com/NB300-620

Updated 1/5/2026 v.20.1

Earn rewards for product reviews and publications.

Submit a publication at www.novusbio.com/publications

Submit a review at www.novusbio.com/reviews/destination/NB300-620

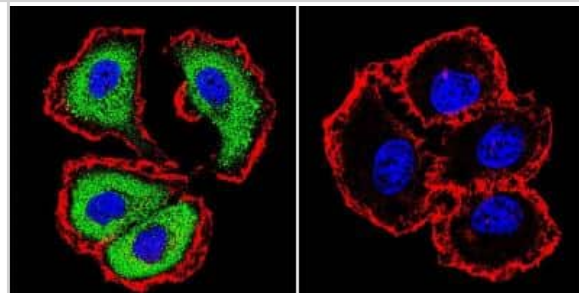


NB300-620**NFATC1/NFAT2 Antibody (7A6)**

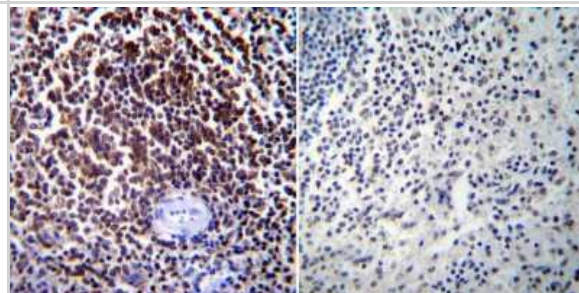
Product Information	
Unit Size	100 uL
Concentration	This product is unpurified. The exact concentration of antibody is not quantifiable.
Storage	Store at -20C. Avoid freeze-thaw cycles.
Clonality	Monoclonal
Clone	7A6
Preservative	0.05% Sodium Azide
Isotype	IgG1
Purity	Unpurified
Buffer	Ascites diluted with PBS
Product Description	
Description	Novus Biologicals Mouse NFATC1/NFAT2 Antibody (7A6) (NB300-620) is a monoclonal antibody validated for use in IHC, WB, ICC/IF, Simple Western, IP and ChIP. Anti-NFATC1/NFAT2 Antibody: Cited in 4 publications. All Novus Biologicals antibodies are covered by our 100% guarantee.
Host	Mouse
Gene ID	4772
Gene Symbol	NFATC1
Species	Human, Mouse, Rat, Hamster, Primate, Rabbit
Reactivity Notes	Rabbit reactivity reported in scientific literature (PMID: 16129432). Hamster reactivity reported in scientific literature (PMID: 10866678). Please note that this antibody is reactive to Mouse and derived from the same host, Mouse. Additional Mouse on Mouse blocking steps may be required for IHC and ICC experiments. Please contact Technical Support for more information.
Specificity/Sensitivity	Detects cytosolic nuclear factor of activated T-cells (NFAT 2) from transfected human, mouse, and monkey cells. This does not cross react with NFATp.
Immunogen	Bacterially expressed glutathione S-transferase (GST) fusion protein containing NF-ATc1 residues 1-654.
Product Application Details	
Applications	Western Blot, Immunohistochemistry-Paraffin, Gel Super Shift Assays, Immunocytochemistry/ Immunofluorescence, Immunohistochemistry, Immunoprecipitation, Chromatin Immunoprecipitation (ChIP)
Recommended Dilutions	Western Blot 1:100 - 1:2000, Immunohistochemistry 1:20 - 1:200, Immunocytochemistry/ Immunofluorescence 1:10-1:500, Immunoprecipitation 1:10 - 1:500, Immunohistochemistry-Paraffin 1:20 - 1:200, Gel Super Shift Assays 1:1 - 1:100, Chromatin Immunoprecipitation (ChIP) 1:10-1:500
Application Notes	WB: Detects an approx. 105 kDa band representing transfected NFAT2 from COS cell lysate.

Images

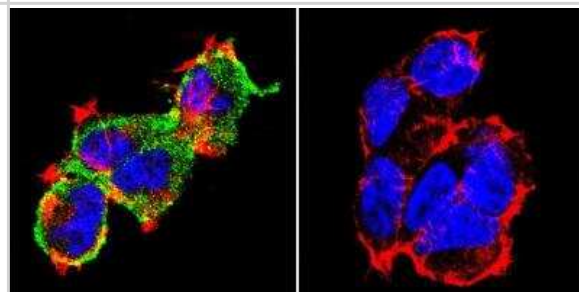
Immunocytochemistry/Immunofluorescence: NFATC1/NFAT2 Antibody (7A6) [NB300-620] - NFATc1 (green), F-Actin staining with Phalloidin (red) and nuclei with DAPI (blue) is shown. Cells were grown on chamber slides and fixed with formaldehyde prior to staining. Cells were probed without (control) or with an antibody recognizing NFATc1 at a dilution of 1:20 over night at 4C, washed with PBS and incubated with a DyLight-488 conjugated.



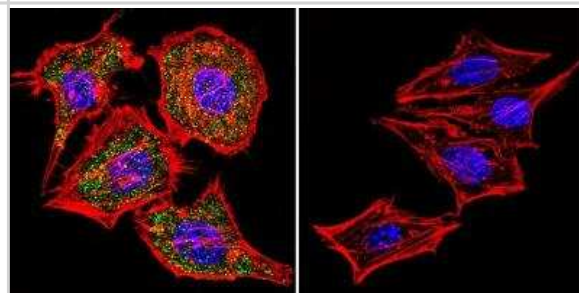
Immunohistochemistry-Paraffin: NFATC1/NFAT2 Antibody (7A6) [NB300-620] - Normal biopsies of deparaffinized Human spleen tissue.



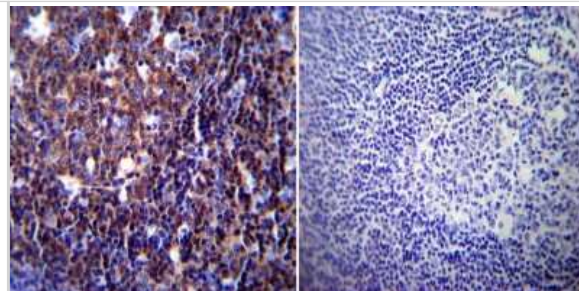
Immunocytochemistry/Immunofluorescence: NFATC1/NFAT2 Antibody (7A6) [NB300-620] - NFATc1 (green), F-Actin staining with Phalloidin (red) and nuclei with DAPI (blue) is shown. Cells were grown on chamber slides and fixed with formaldehyde prior to staining. Cells were probed without (control) or with an antibody recognizing NFATc1 at a dilution of 1:20 over night at 4C, washed with PBS and incubated with a DyLight-488 conjugated.



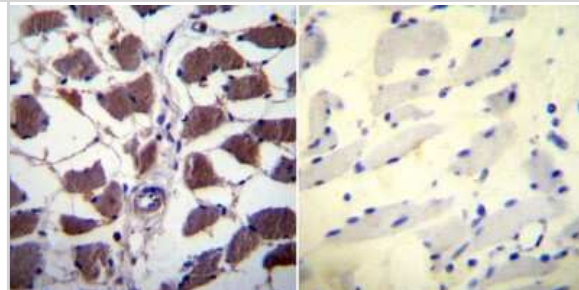
Immunocytochemistry/Immunofluorescence: NFATC1/NFAT2 Antibody (7A6) [NB300-620] - NFATc1 (green), F-Actin staining with Phalloidin (red) and nuclei with DAPI (blue) is shown. Cells were grown on chamber slides and fixed with formaldehyde prior to staining. Cells were probed without (control) or with an antibody recognizing NFATc1 at a dilution of 1:20 over night at 4C, washed with PBS and incubated with a DyLight-488 conjugated.



Immunohistochemistry: NFATC1/NFAT2 Antibody (7A6) [NB300-620] - Normal biopsies of deparaffinized Human tonsil tissue.



Immunohistochemistry-Paraffin: NFATC1/NFAT2 Antibody (7A6) [NB300-620] - Normal biopsies of deparaffinized Human skeletal muscle tissue.



Publications

Saburi M, Yamada H, Wada N et al. Maternal High-Fat Diet Promotes Abdominal Aortic Aneurysm Expansion in Adult Offspring by Epigenetic Regulation of IRF8-Mediated Osteoclast-like Macrophage Differentiation Cells 2021-08-27 [PMID: 34571873] (Immunohistochemistry, Immunocytochemistry/ Immunofluorescence, Mouse)

Yu F, Li F, Yu P et al. Identification and characterization of NFATc1+ skeletal stem cells in bone regeneration Cell reports 2022-11-08 [PMID: 36351390] (Chemotaxis, Human)

Zhang P, Hu S, Xu H et al. Bushenhuoxue formula inhibits osteoclastogenesis and bone resorption on rabbit steroid-related osteonecrosis of the femoral head by suppressing NF-kappa B/NFATc1 pathway Research Square 2020-09-03 (WB, Human)

Zavaczki E, Gall T, Zarjou A et Al. Ferryl Hemoglobin Inhibits Osteoclastic Differentiation of Macrophages in Hemorrhaged Atherosclerotic Plaques Oxid Med Cell Longev 2020-02-27 [PMID: 32184915] (WB, ICC/IF, Mouse)

Alpini G, Franchitto A, Demorrow S et al. Activation of alpha(1) -adrenergic receptors stimulate the growth of small mouse cholangiocytes via calcium-dependent activation of nuclear factor of activated T cells 2 and specificity protein 1 Hepatology 2011-02-01 [PMID: 21274883] (ICC/IF, IF/IHC, Mouse)



Novus Biologicals USA

10730 E. Briarwood Avenue
Centennial, CO 80112
USA
Phone: 303.730.1950
Toll Free: 1.888.506.6887
Fax: 303.730.1966
nb-customerservice@bio-techne.com

Bio-Techne Canada

21 Canmotor Ave
Toronto, ON M8Z 4E6
Canada
Phone: 905.827.6400
Toll Free: 855.668.8722
Fax: 905.827.6402
canada.inquires@bio-techne.com

Bio-Techne Ltd

19 Barton Lane
Abingdon Science Park
Abingdon, OX14 3NB, United Kingdom
Phone: (44) (0) 1235 529449
Free Phone: 0800 37 34 15
Fax: (44) (0) 1235 533420
info.EMEA@bio-techne.com

General Contact Information

www.novusbio.com
Technical Support: nb-technical@bio-techne.com
Orders: nb-customerservice@bio-techne.com
General: novus@novusbio.com

Products Related to NB300-620

NBL1-13608	NFATC1/NFAT2 Overexpression Lysate
NBP2-33376H	Blue Marker Antibody (6F4-F6) [HRP]
HAF007	Goat anti-Mouse IgG Secondary Antibody [HRP]
NB7539	Goat anti-Mouse IgG (H+L) Secondary Antibody [HRP]
NBP1-97005-0.5mg	Mouse IgG1 Isotype Control (MG1)

Limitations

This product is for research use only and is not approved for use in humans or in clinical diagnosis. Primary Antibodies are guaranteed for 1 year from date of receipt.

For more information on our 100% guarantee, please visit www.novusbio.com/guarantee

Earn gift cards/discounts by submitting a review: www.novusbio.com/reviews/submit/NB300-620

Earn gift cards/discounts by submitting a publication using this product:
www.novusbio.com/publications

