

Product Datasheet

Clathrin Heavy Chain 1/CHC17 Antibody (X22) - BSA Free NB300-613

Unit Size: 100uL

Store at -20C. Avoid freeze-thaw cycles.

www.novusbio.com



technical@novusbio.com

Reviews: 1 **Publications: 8**

Protocols, Publications, Related Products, Reviews, Research Tools and Images at:
www.novusbio.com/NB300-613

Updated 9/9/2025 v.20.1

**Earn rewards for product
reviews and publications.**

Submit a publication at www.novusbio.com/publications

Submit a review at www.novusbio.com/reviews/destination/NB300-613

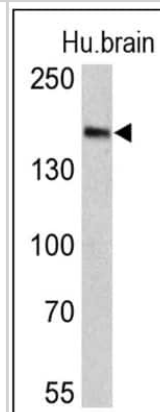


NB300-613**Clathrin Heavy Chain 1/CHC17 Antibody (X22) - BSA Free**

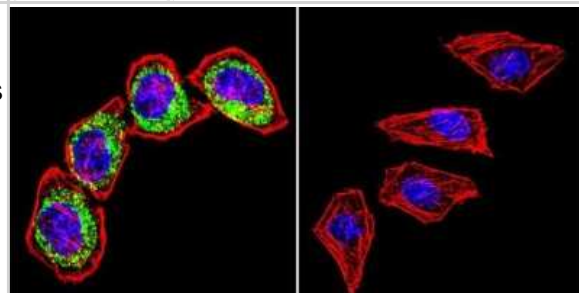
Product Information	
Unit Size	100uL
Concentration	6 mg/ml
Storage	Store at -20C. Avoid freeze-thaw cycles.
Clonality	Monoclonal
Clone	X22
Preservative	0.05% Sodium Azide
Isotype	IgG1
Purity	Protein A purified
Buffer	PBS
Product Description	
Description	Novus Biologicals Mouse Clathrin Heavy Chain 1/CHC17 Antibody (X22) - BSA Free (NB300-613) is a monoclonal antibody validated for use in IHC, WB, Flow, ICC/IF and IP. Anti-Clathrin Heavy Chain 1/CHC17 Antibody: Cited in 8 publications. All Novus Biologicals antibodies are covered by our 100% guarantee.
Host	Mouse
Gene ID	1213
Gene Symbol	CLTC
Species	Human, Mouse, Rat, Bovine, Hamster, Primate
Reactivity Notes	Hamster reactivity reported in scientific literature (PMID: 15689492). Please note that this antibody is reactive to Mouse and derived from the same host, Mouse. Additional Mouse on Mouse blocking steps may be required for IHC and ICC experiments. Please contact Technical Support for more information.
Marker	Clathrin-coated Vesicle Marker
Specificity/Sensitivity	Detects clathrin heavy chain.
Immunogen	Purified human brain clathrin heavy chain.
Product Application Details	
Applications	Western Blot, Immunohistochemistry-Paraffin, Flow Cytometry, Immunocytochemistry/ Immunofluorescence, Immunohistochemistry, Immunomicroscopy, Immunoprecipitation
Recommended Dilutions	Western Blot 1:500, Flow Cytometry 1:200, Immunohistochemistry 1:100, Immunocytochemistry/ Immunofluorescence 1:1000, Immunoprecipitation 1:10-1:500, Immunohistochemistry-Paraffin 1:100, Immunomicroscopy Assay dependent
Application Notes	WB: Detects a single approx. 180 kDa protein representing the clathrin heavy chain from bovine brain extract. IP: Triskelions with this antibody allows both the clathrin heavy chain and the associated light chain polypeptides to be examined.

Images

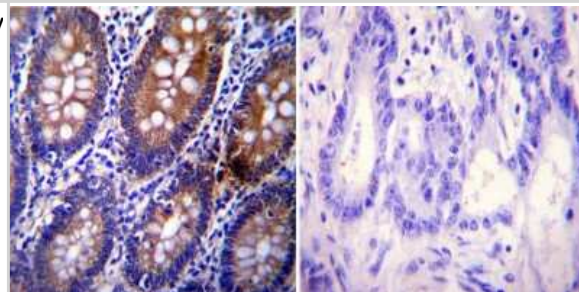
Western Blot: Clathrin Heavy Chain 1/CHC17 Antibody (X22) [NB300-613] - Analysis of 25 ug of human brain lysates.



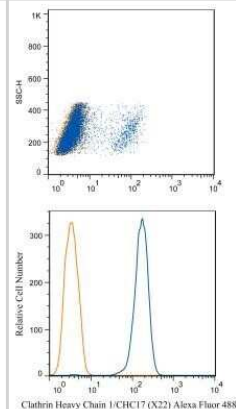
Immunocytochemistry/Immunofluorescence: Clathrin Heavy Chain 1/CHC17 Antibody (X22) [NB300-613] - Analysis of Clathrin, Heavy chain using Anti-Clathrin, Heavy chain Monoclonal Antibody (X22) shows staining in Hela Cells. Clathrin, Heavy chain staining (green), F-Actin staining with Phalloidin (red) and nuclei with DAPI (blue) is shown. Cells were grown on chamber slides and fixed with formaldehyde prior to staining. Cells were probed without (control) or with or an antibody recognizing Clathrin, Heavy chain at a dilution of 1:200 over night at 4C, washed with PBS and incubated with a DyLight-488 conjugated secondary antibody. Images were taken at 60X magnification.



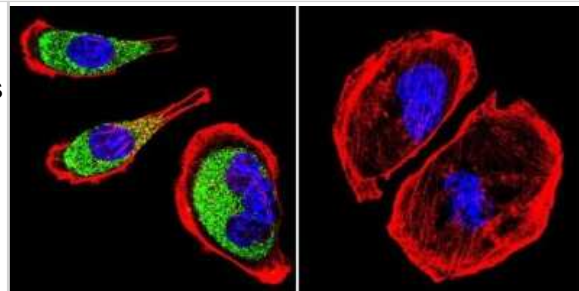
Immunohistochemistry-Paraffin: Clathrin Heavy Chain 1/CHC17 Antibody (X22) [NB300-613] - Normal biopsies of deparaffinized Human colon tissue.



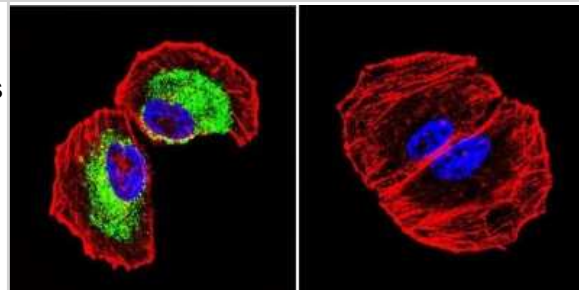
Flow Cytometry: Clathrin Heavy Chain 1/CHC17 Antibody (X22) [NB300-613] - Analysis of Alexa Fluor (R) 488 conjugate of NB300-613. A cell surface stain was performed on HeLa cells with Clathrin Heavy Chain 1 antibody NB300-613AF488 (blue) along with a matched isotype control NBP2-27287AF488 (orange). Cells were incubated in an a



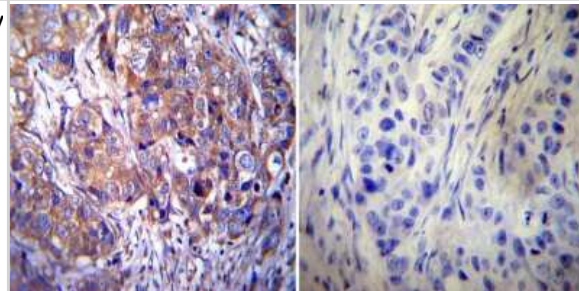
Immunocytochemistry/Immunofluorescence: Clathrin Heavy Chain 1/CHC17 Antibody (X22) [NB300-613] - Analysis of Clathrin, Heavy chain using Anti-Clathrin, Heavy chain Monoclonal Antibody (X22) shows staining in U251 Cells. Clathrin, Heavy chain staining (green), F-Actin staining with Phalloidin (red) and nuclei with DAPI (blue) is shown. Cells were grown on chamber slides and fixed with formaldehyde prior to staining. Cells were probed without (control) or with or an antibody recognizing Clathrin, Heavy chain at a dilution of 1:200 over night at 4C, washed with PBS and incubated with a DyLight-488 conjugated secondary antibody. Images were taken at 60X magnification.



Immunocytochemistry/Immunofluorescence: Clathrin Heavy Chain 1/CHC17 Antibody (X22) [NB300-613] - Analysis of Clathrin, Heavy chain using Anti-Clathrin, Heavy chain Monoclonal Antibody (X22) shows staining in NCI-H460 Cells. Clathrin, Heavy chain staining (green), F-Actin staining with Phalloidin (red) and nuclei with DAPI (blue) is shown. Cells were grown on chamber slides and fixed with formaldehyde prior to staining. Cells were probed without (control) or with or an antibody recognizing Clathrin, Heavy chain at a dilution of 1:200 over night at 4C, washed with PBS and incubated with a DyLight-488 conjugated secondary antibody. Images were taken at 60X magnification.



Immunohistochemistry-Paraffin: Clathrin Heavy Chain 1/CHC17 Antibody (X22) [NB300-613] - Cancer biopsies of deparaffinized Human breast carcinoma tissue.



Publications

Cresens C, Solís-Fernández G, Tiwari A, Nuyts R et Al. Flat clathrin lattices are linked to metastatic potential in colorectal cancer *iScience* 2023-08-04 [PMID: 37539031]

Baumgart F, Arnold AM, Leskovar K et al. Varying label density allows artifact-free analysis of membrane-protein nanoclusters *Nat Methods*. 2016-08-01 [PMID: 27295310]

Details:

Citation used the Biotin format of this antibody.

Cascella R, Capitini C, Fani G et al. Quantification of the relative contributions of loss-of-function and gain-of-function mechanisms in TDP-43 proteinopathies *J. Biol. Chem.* 2016-07-21 [PMID: 27445339] (WB, Human)

Shapira KE, Hirschhorn T, Barzilay L et al. Dab2 inhibits the cholesterol-dependent activation of JNK by TGF-beta. *Mol. Biol. Cell* 2014-03-19 [PMID: 24648493] (WB, Human)

Gottfried I, Ehrlich M, Ashery U. HIP1 exhibits an early recruitment and a late stage function in the maturation of coated pits. *Cell Mol Life Sci* 2009-09-01 [PMID: 19626275] (ICC/IF, Human)

Hirschhorn T, Barzilay L, Smorodinsky NI, Ehrlich M. Differential Regulation of Smad3 and of the Type II Transforming Growth Factor-Beta Receptor in Mitosis: Implications for Signaling *PLoS One* 2012-01-01 [PMID: 22927969] (WB, Human)

Shepard, B D, Tuma, D J Tuma, P L. Lysine acetylation induced by chronic ethanol consumption impairs dynamin-mediated clathrin-coated vesicle release. *Hepatology* 2012-01-01 [PMID: 22095875] (ICC/IF, WB, Rat)

Fernandez DJ, McVicker BL, Tuma DJ et al. Ethanol selectively impairs clathrin-mediated internalization in polarized hepatic cells. *Biochem Pharmacol*;78(6):648-55. 2009-09-15 [PMID: 19463792]





Novus Biologicals USA

10730 E. Briarwood Avenue
Centennial, CO 80112
USA
Phone: 303.730.1950
Toll Free: 1.888.506.6887
Fax: 303.730.1966
nb-customerservice@bio-techne.com

Bio-Techne Canada

21 Canmotor Ave
Toronto, ON M8Z 4E6
Canada
Phone: 905.827.6400
Toll Free: 855.668.8722
Fax: 905.827.6402
canada.inquires@bio-techne.com

Bio-Techne Ltd

19 Barton Lane
Abingdon Science Park
Abingdon, OX14 3NB, United Kingdom
Phone: (44) (0) 1235 529449
Free Phone: 0800 37 34 15
Fax: (44) (0) 1235 533420
info.EMEA@bio-techne.com

General Contact Information

www.novusbio.com
Technical Support: nb-technical@bio-techne.com
Orders: nb-customerservice@bio-techne.com
General: novus@novusbio.com

Products Related to NB300-613

NBP2-33376H	Blue Marker Antibody (6F4-F6) [HRP]
HAF007	Goat anti-Mouse IgG Secondary Antibody [HRP]
NB7539	Goat anti-Mouse IgG (H+L) Secondary Antibody [HRP]
NBP1-97005-0.5mg	Mouse IgG1 Isotype Control (MG1)

Limitations

This product is for research use only and is not approved for use in humans or in clinical diagnosis. Primary Antibodies are guaranteed for 1 year from date of receipt.

For more information on our 100% guarantee, please visit www.novusbio.com/guarantee

Earn gift cards/discounts by submitting a review: www.novusbio.com/reviews/submit/NB300-613

Earn gift cards/discounts by submitting a publication using this product:
www.novusbio.com/publications

