

Product Datasheet

Cannabinoid R2/CB2/CNR2 Antibody NB300-606

Unit Size: 100uL

Store at -20C. Avoid freeze-thaw cycles.

www.novusbio.com



technical@novusbio.com

Publications: 2

Protocols, Publications, Related Products, Reviews, Research Tools and Images at:
www.novusbio.com/NB300-606

Updated 9/9/2025 v.20.1

Earn rewards for product
reviews and publications.

Submit a publication at www.novusbio.com/publications

Submit a review at www.novusbio.com/reviews/destination/NB300-606



NB300-606**Cannabinoid R2/CB2/CNR2 Antibody**

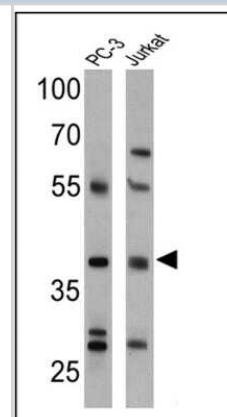
Product Information	
Unit Size	100uL
Concentration	1 mg/ml
Storage	Store at -20C. Avoid freeze-thaw cycles.
Clonality	Polyclonal
Preservative	0.05% Sodium Azide
Isotype	IgG
Purity	Immunogen affinity purified
Buffer	PBS with 1 mg/ml BSA and 30% glycerol

Product Description	
Description	Novus Biologicals Rabbit Cannabinoid R2/CB2/CNR2 Antibody (NB300-606) is a polyclonal antibody validated for use in IHC, WB, Flow and ICC/IF. Anti-Cannabinoid R2/CB2/CNR2 Antibody: Cited in 2 publications. All Novus Biologicals antibodies are covered by our 100% guarantee.
Host	Rabbit
Gene ID	1269
Gene Symbol	CNR2
Species	Human
Specificity/Sensitivity	Cannabinoid Receptor 2
Immunogen	A fusion protein containing the first 33 amino acid residues from human CB2.

Product Application Details	
Applications	Western Blot, Immunohistochemistry-Paraffin, Flow Cytometry, Immunocytochemistry/ Immunofluorescence, Immunohistochemistry, Immunohistochemistry-Frozen
Recommended Dilutions	Western Blot 1:250 - 1:2500, Flow Cytometry 1:50, Immunohistochemistry 1:100, Immunocytochemistry/ Immunofluorescence 1:100, Immunohistochemistry-Paraffin 1:100, Immunohistochemistry-Frozen 1:100
Application Notes	WB: Detects an approx. 60 kDa protein representing CB2 from human spinal cord homogenate.

Images

Western Blot: Cannabinoid R2/CB2/CNR2 Antibody [NB300-606] - Analysis of 25 ug of PC-3 (lane 1) and Jurkat (lane 2) cell lysates.



Publications

Saito H, Yokoyama T, Nakamuta N, Yamamoto Y. Immunohistochemical distribution of cannabinoid receptor type 1 (CB1) and type 2 (CB2) in the rat carotid body. *Acta histochemica* 2024-10-13 [PMID: 39405990]

Patsenker E, Stoll M, Millonig G et al. Cannabinoid Receptor Type I Modulates Alcohol-Induced Liver Fibrosis. *Mol Med.* 2011-08-19 [PMID: 21863215]





Novus Biologicals USA

10730 E. Briarwood Avenue
Centennial, CO 80112
USA
Phone: 303.730.1950
Toll Free: 1.888.506.6887
Fax: 303.730.1966
nb-customerservice@bio-techne.com

Bio-Techne Canada

21 Canmotor Ave
Toronto, ON M8Z 4E6
Canada
Phone: 905.827.6400
Toll Free: 855.668.8722
Fax: 905.827.6402
canada.inquires@bio-techne.com

Bio-Techne Ltd

19 Barton Lane
Abingdon Science Park
Abingdon, OX14 3NB, United Kingdom
Phone: (44) (0) 1235 529449
Free Phone: 0800 37 34 15
Fax: (44) (0) 1235 533420
info.EMEA@bio-techne.com

General Contact Information

www.novusbio.com
Technical Support: nb-technical@bio-techne.com
Orders: nb-customerservice@bio-techne.com
General: novus@novusbio.com

Products Related to NB300-606

NBL1-09328	Cannabinoid R2/CB2/CNR2 Overexpression Lysate
NBP2-33376H	Blue Marker Antibody (6F4-F6) [HRP]
HAF008	Goat anti-Rabbit IgG Secondary Antibody [HRP]
NB7160	Goat anti-Rabbit IgG (H+L) Secondary Antibody [HRP]
NBP2-24891	Rabbit IgG Isotype Control

Limitations

This product is for research use only and is not approved for use in humans or in clinical diagnosis. Primary Antibodies are guaranteed for 1 year from date of receipt.

For more information on our 100% guarantee, please visit www.novusbio.com/guarantee

Earn gift cards/discounts by submitting a review: www.novusbio.com/reviews/submit/NB300-606

Earn gift cards/discounts by submitting a publication using this product:
www.novusbio.com/publications

