

# Product Datasheet

## Hydrogen Potassium ATPase Beta Antibody (2G11) NB300-583

Unit Size: 100 uL

Store at -20C. Avoid freeze-thaw cycles.

[www.novusbio.com](http://www.novusbio.com)



[technical@novusbio.com](mailto:technical@novusbio.com)

### Publications: 5

Protocols, Publications, Related Products, Reviews, Research Tools and Images at:  
[www.novusbio.com/NB300-583](http://www.novusbio.com/NB300-583)

Updated 9/9/2025 v.20.1

Earn rewards for product  
reviews and publications.

Submit a publication at [www.novusbio.com/publications](http://www.novusbio.com/publications)

Submit a review at [www.novusbio.com/reviews/destination/NB300-583](http://www.novusbio.com/reviews/destination/NB300-583)

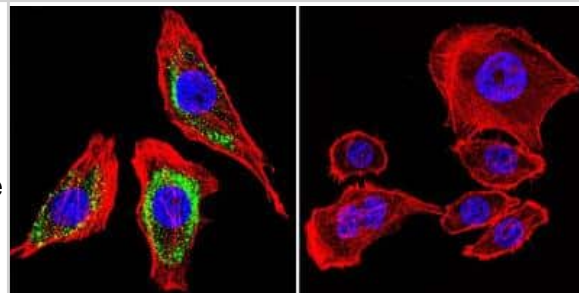


**NB300-583****Hydrogen Potassium ATPase Beta Antibody (2G11)**

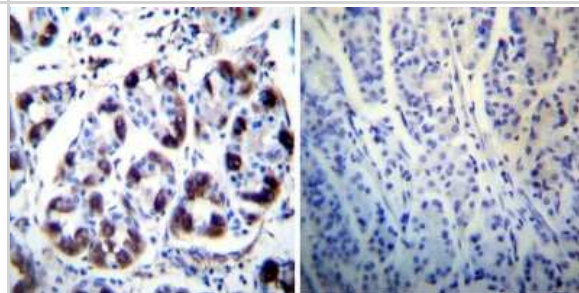
<b>Product Information</b>	
<b>Unit Size</b>	100 uL
<b>Concentration</b>	This product is unpurified. The exact concentration of antibody is not quantifiable.
<b>Storage</b>	Store at -20C. Avoid freeze-thaw cycles.
<b>Clonality</b>	Monoclonal
<b>Clone</b>	2G11
<b>Preservative</b>	0.05% Sodium Azide
<b>Isotype</b>	IgG1
<b>Purity</b>	Unpurified
<b>Buffer</b>	Ascites diluted with PBS
<b>Product Description</b>	
<b>Description</b>	Novus Biologicals Mouse Hydrogen Potassium ATPase Beta Antibody (2G11) (NB300-583) is a monoclonal antibody validated for use in IHC, WB, Flow, ICC/IF, IP and ChIP. Anti-Hydrogen Potassium ATPase Beta Antibody: Cited in 5 publications. All Novus Biologicals antibodies are covered by our 100% guarantee.
<b>Host</b>	Mouse
<b>Gene ID</b>	496
<b>Gene Symbol</b>	ATP4B
<b>Species</b>	Human, Mouse, Rat, Porcine, Bovine, Canine, Ferret, Rabbit
<b>Reactivity Notes</b>	Please note that this antibody is reactive to Mouse and derived from the same host, Mouse. Additional Mouse on Mouse blocking steps may be required for IHC and ICC experiments. Please contact Technical Support for more information.
<b>Specificity/Sensitivity</b>	Detects the beta-subunit of hydrogen/potassium ATPase.
<b>Immunogen</b>	Purified 34 kDa core peptide from deglycosylated hog gastric microsomes.
<b>Product Application Details</b>	
<b>Applications</b>	Western Blot, Immunohistochemistry-Paraffin, Dot Blot, Flow Cytometry, Immunocytochemistry/ Immunofluorescence, Immunohistochemistry, Immunohistochemistry-Frozen, Immunoprecipitation, Chromatin Immunoprecipitation (ChIP)
<b>Recommended Dilutions</b>	Western Blot 1:4000, Flow Cytometry 1:50, Immunohistochemistry 1:10 - 1:500, Immunocytochemistry/ Immunofluorescence 1:10-1:500, Immunoprecipitation 1:10 - 1:500, Immunohistochemistry-Paraffin 1:2000, Immunohistochemistry-Frozen 1:2000, Dot Blot 1:100 - 1:2000, Chromatin Immunoprecipitation (ChIP) 1:10-1:500
<b>Application Notes</b>	DB usage was reported in scientific literature (PMID: 26686297).

## Images

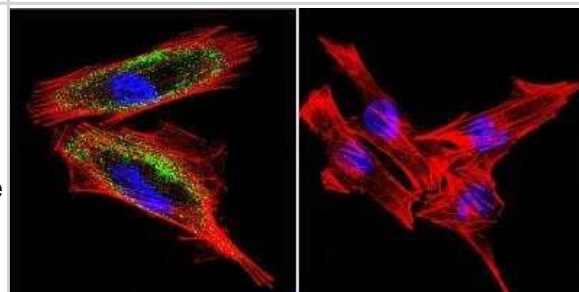
Immunocytochemistry/Immunofluorescence: Hydrogen Potassium ATPase Beta Antibody (2G11) [NB300-583] - Hydrogen/Potassium ATPase beta staining (green), F-Actin staining with Phalloidin (red) and nuclei with DAPI (blue) is shown. Cells were grown on chamber slides and fixed with formaldehyde prior to staining. Cells were probed without (control) or with or an antibody recognizing Hydrogen/Potassium ATPase beta at a dilution of 1:100 over night at 4C, washed with PBS and incubated with a DyLight-488 conjugated.



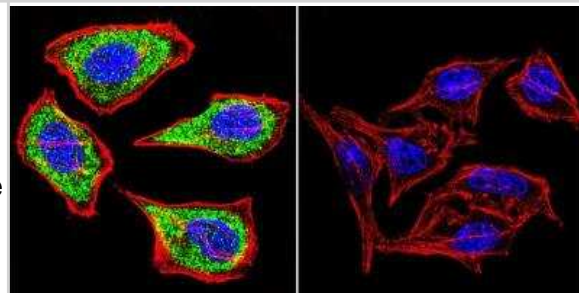
Immunohistochemistry-Paraffin: Hydrogen Potassium ATPase Beta Antibody (2G11) [NB300-583] - Both normal and cancer biopsies of deparaffinized Human stomach tissues.



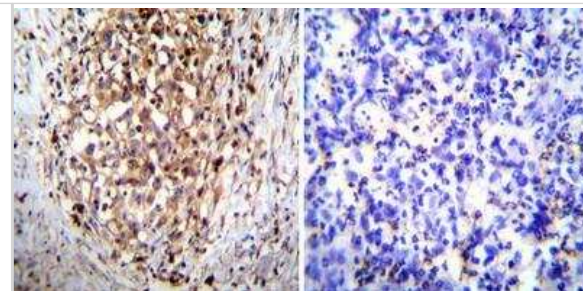
Immunocytochemistry/Immunofluorescence: Hydrogen Potassium ATPase Beta Antibody (2G11) [NB300-583] - Hydrogen/Potassium ATPase beta staining (green), F-Actin staining with Phalloidin (red) and nuclei with DAPI (blue) is shown. Cells were grown on chamber slides and fixed with formaldehyde prior to staining. Cells were probed without (control) or with or an antibody recognizing Hydrogen/Potassium ATPase beta at a dilution of 1:100 over night at 4C, washed with PBS and incubated with a DyLight-488 conjugated.



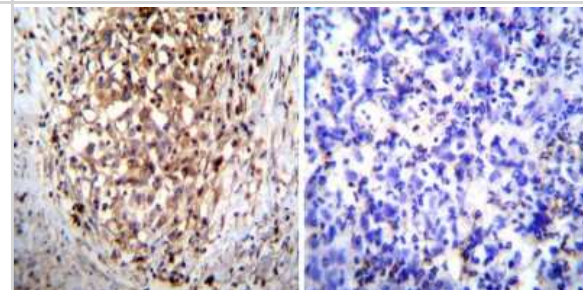
Immunocytochemistry/Immunofluorescence: Hydrogen Potassium ATPase Beta Antibody (2G11) [NB300-583] - Hydrogen/Potassium ATPase beta staining (green), F-Actin staining with Phalloidin (red) and nuclei with DAPI (blue) is shown. Cells were grown on chamber slides and fixed with formaldehyde prior to staining. Cells were probed without (control) or with or an antibody recognizing Hydrogen/Potassium ATPase beta at a dilution of 1:200 over night at 4C, washed with PBS and incubated with a DyLight-488 conjugated.



Immunohistochemistry-Paraffin: Hydrogen Potassium ATPase Beta Antibody (2G11) [NB300-583] - Both normal and cancer biopsies of deparaffinized Human gastric carcinoma tissues.



Immunohistochemistry-Paraffin: Hydrogen Potassium ATPase Beta Antibody (2G11) [NB300-583] - Both normal and cancer biopsies of deparaffinized Human gastric carcinoma tissues.



## Publications

Feng XY, Yan JT, Li GW et al. Source of dopamine in gastric juice and luminal dopamine-induced duodenal bicarbonate secretion via apical dopamine receptor 2 Br. J. Pharmacol. 2020-03-10 [PMID: 32154577] (WB, Rat)

Takumida M, Takumida H, Anniko M. Gastric-type H(+),K(+)-ATPase in mouse vestibular end organs. Acta Otolaryngol. 2016-10-21 [PMID: 27768854] (IHC-P, Mouse)

Noreldin AE, Sogabe M, Yamano Y et al. Spatial distribution of osteoblast activating peptide in the rat stomach. Acta Histochem. 2015-12-10 [PMID: 26686297] (Cytometric Bead Assay Standard, ICC/IF, Rat)

Martin AB, Aydemir TB, Guthrie GJ et al. Gastric and Colonic Zinc Transporter ZIP11 (Slc39a11) in Mice Responds to Dietary Zinc and Exhibits Nuclear Localization. J Nutr. 2013-10-02 [PMID: 24089422] (ICC/IF, IHC-P, Mouse)

Mastrodonato M, Calamita G, Rossi R et al. Expression of H+,K+-ATPase Glycopattern Analysis in the Gastric GIs of Rana esculenta. J Histochem Cytochem :jhc2008.952234. 2008-01-01 [PMID: 19001639]



### **Novus Biologicals USA**

10730 E. Briarwood Avenue  
Centennial, CO 80112  
USA  
Phone: 303.730.1950  
Toll Free: 1.888.506.6887  
Fax: 303.730.1966  
nb-customerservice@bio-techne.com

### **Bio-Techne Canada**

21 Canmotor Ave  
Toronto, ON M8Z 4E6  
Canada  
Phone: 905.827.6400  
Toll Free: 855.668.8722  
Fax: 905.827.6402  
canada.inquires@bio-techne.com

### **Bio-Techne Ltd**

19 Barton Lane  
Abingdon Science Park  
Abingdon, OX14 3NB, United Kingdom  
Phone: (44) (0) 1235 529449  
Free Phone: 0800 37 34 15  
Fax: (44) (0) 1235 533420  
info.EMEA@bio-techne.com

### **General Contact Information**

www.novusbio.com  
Technical Support: nb-technical@bio-techne.com  
Orders: nb-customerservice@bio-techne.com  
General: novus@novusbio.com

### **Products Related to NB300-583**

---

NBP2-33376H	Blue Marker Antibody (6F4-F6) [HRP]
HAF007	Goat anti-Mouse IgG Secondary Antibody [HRP]
NB7539	Goat anti-Mouse IgG (H+L) Secondary Antibody [HRP]
NBP1-97005-0.5mg	Mouse IgG1 Isotype Control (MG1)

---

### **Limitations**

This product is for research use only and is not approved for use in humans or in clinical diagnosis. Primary Antibodies are guaranteed for 1 year from date of receipt.

For more information on our 100% guarantee, please visit [www.novusbio.com/guarantee](http://www.novusbio.com/guarantee)

Earn gift cards/discounts by submitting a review: [www.novusbio.com/reviews/submit/NB300-583](http://www.novusbio.com/reviews/submit/NB300-583)

Earn gift cards/discounts by submitting a publication using this product:  
[www.novusbio.com/publications](http://www.novusbio.com/publications)

