

Product Datasheet

CETP Antibody (ATM192) - BSA Free NB300-558

Unit Size: 100uL

Store at -20C. Avoid freeze-thaw cycles.

www.novusbio.com



technical@novusbio.com

Publications: 1

Protocols, Publications, Related Products, Reviews, Research Tools and Images at:
www.novusbio.com/NB300-558

Updated 9/9/2025 v.20.1

Earn rewards for product
reviews and publications.

Submit a publication at www.novusbio.com/publications

Submit a review at www.novusbio.com/reviews/destination/NB300-558



NB300-558

CETP Antibody (ATM192) - BSA Free

Product Information	
Unit Size	100uL
Concentration	2 mg/ml
Storage	Store at -20C. Avoid freeze-thaw cycles.
Clonality	Monoclonal
Clone	ATM192
Preservative	0.05% Sodium Azide
Isotype	IgG1
Purity	Protein A purified
Buffer	PBS

Product Description	
Description	Novus Biologicals Mouse CETP Antibody (ATM192) - BSA Free (NB300-558) is a monoclonal antibody validated for use in WB, ELISA, ICC/IF and IP. Anti-CETP Antibody: Cited in 1 publication. All Novus Biologicals antibodies are covered by our 100% guarantee.
Host	Mouse
Gene ID	1071
Gene Symbol	CETP
Species	Human, Bovine, Rabbit
Immunogen	Synthetic peptide corresponding to residues C D(149) S G R V R T D A P D(159) of human CETP protein.

Product Application Details	
Applications	Western Blot, ELISA, Immunocytochemistry/ Immunofluorescence, Immunoprecipitation
Recommended Dilutions	Western Blot 1:400, ELISA 1:100 - 1:2000, Immunocytochemistry/ Immunofluorescence 1:20, Immunoprecipitation 1:10 - 1:500
Application Notes	WB: Detects adoublet at ~70 kDa from human serum representing CETP. May be useful in IP CETP activity from serum samples using protein G.



Images

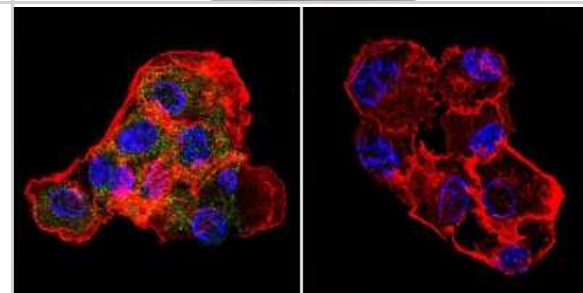
Western Blot: CETP Antibody (ATM192) [NB300-558] - Analysis of human liver extract.

Fig. 1

~70 kDa -



Immunocytochemistry/Immunofluorescence: CETP Antibody (ATM192) [NB300-558] - Cells were grown on chamber slides and fixed with formaldehyde prior to staining. Cells were probed without (control) or with a CETP monoclonal antibody at a dilution of 1:20 overnight at 4 C, washed with PBS and incubated with a DyLight-488 conjugated secondary antibody and nuclei with DAPI (blue) is shown.



Publications

Thomas AP, Smith AM, Cumming RI, Jones C, Thomas RC, Pleasants KT, Barakat H. Mouse monoclonal anti-peptide antibodies specific for cholesteryl ester transfer protein (CETP). *Hybridoma*;15(5):359-64. 1996-10-01 [PMID: 8913785]



Novus Biologicals USA

10730 E. Briarwood Avenue
Centennial, CO 80112
USA
Phone: 303.730.1950
Toll Free: 1.888.506.6887
Fax: 303.730.1966
nb-customerservice@bio-techne.com

Bio-Techne Canada

21 Canmotor Ave
Toronto, ON M8Z 4E6
Canada
Phone: 905.827.6400
Toll Free: 855.668.8722
Fax: 905.827.6402
canada.inquires@bio-techne.com

Bio-Techne Ltd

19 Barton Lane
Abingdon Science Park
Abingdon, OX14 3NB, United Kingdom
Phone: (44) (0) 1235 529449
Free Phone: 0800 37 34 15
Fax: (44) (0) 1235 533420
info.EMEA@bio-techne.com

General Contact Information

www.novusbio.com
Technical Support: nb-technical@bio-techne.com
Orders: nb-customerservice@bio-techne.com
General: novus@novusbio.com

Products Related to NB300-558

NBL1-09118	CETP Overexpression Lysate
NBP2-33376H	Blue Marker Antibody (6F4-F6) [HRP]
HAF007	Goat anti-Mouse IgG Secondary Antibody [HRP]
NB7539	Goat anti-Mouse IgG (H+L) Secondary Antibody [HRP]
NBP1-97005-0.5mg	Mouse IgG1 Isotype Control (MG1)

Limitations

This product is for research use only and is not approved for use in humans or in clinical diagnosis. Primary Antibodies are guaranteed for 1 year from date of receipt.

For more information on our 100% guarantee, please visit www.novusbio.com/guarantee

Earn gift cards/discounts by submitting a review: www.novusbio.com/reviews/submit/NB300-558

Earn gift cards/discounts by submitting a publication using this product:
www.novusbio.com/publications

