

Product Datasheet

NHERF-1 Antibody NB300-536

Unit Size: 100 ug

Store at -20C. Avoid freeze-thaw cycles.

www.novusbio.com



technical@novusbio.com

Publications: 4

Protocols, Publications, Related Products, Reviews, Research Tools and Images at:
www.novusbio.com/NB300-536

Updated 9/9/2025 v.20.1

Earn rewards for product
reviews and publications.

Submit a publication at www.novusbio.com/publications

Submit a review at www.novusbio.com/reviews/destination/NB300-536



NB300-536**NHERF-1 Antibody**

Product Information	
Unit Size	100 ug
Concentration	1 mg/ml
Storage	Store at -20C. Avoid freeze-thaw cycles.
Clonality	Polyclonal
Preservative	0.05% Sodium Azide
Isotype	IgG
Purity	Immunogen affinity purified
Buffer	PBS, 1 mg/mL BSA

Product Description	
Description	Novus Biologicals Rabbit NHERF-1 Antibody (NB300-536) is a polyclonal antibody validated for use in IHC, WB, ICC/IF and IP. Anti-NHERF-1 Antibody: Cited in 3 publications. All Novus Biologicals antibodies are covered by our 100% guarantee.
Host	Rabbit
Gene ID	9368
Gene Symbol	NHERF1
Species	Human, Mouse, Rat, Canine
Reactivity Notes	Rat reactivity reported in scientific literature (PMID: 21761111). Canine reactivity reported in scientific literature (PMID: 21444686).
Specificity/Sensitivity	Detects EBP50 from mouse tissues, human T84 and Calu3 cells as well as recombinant human protein.
Immunogen	Bacterially expressed, His-tagged human EBP50.

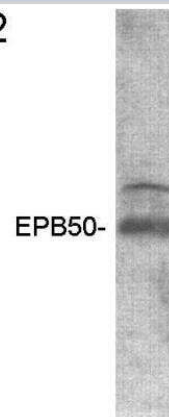
Product Application Details	
Applications	Western Blot, Immunohistochemistry-Paraffin, Immunocytochemistry/Immunofluorescence, Immunohistochemistry, Immunoprecipitation
Recommended Dilutions	Western Blot 1 ug/mL, Immunohistochemistry 1:10 - 1:500, Immunocytochemistry/ Immunofluorescence 2 ug/mL, Immunoprecipitation 1:10 - 1:500, Immunohistochemistry-Paraffin 10 ug/mL
Application Notes	This antibody has been successfully used in Western blot, Immunohistochemistry, immunofluorescence and immunoprecipitation procedures. By Western blot, this antibody detects an ~50 kDa protein representing EBP50 from T84 cell extract. Immunohistochemical staining of EBP50 in mouse airway results in staining of the epithelium. Use in Immunocytochemistry/immunofluorescence reported in scientific literature (PMID: 14625387).



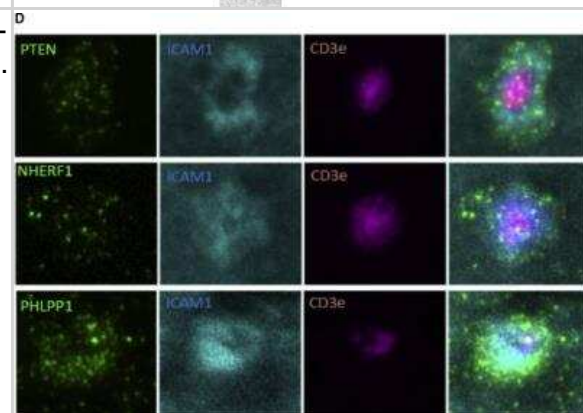
Images

Western Blot: NHERF-1 Antibody [NB300-536] - Analysis of recombinant human EBP50.

Fig. 2



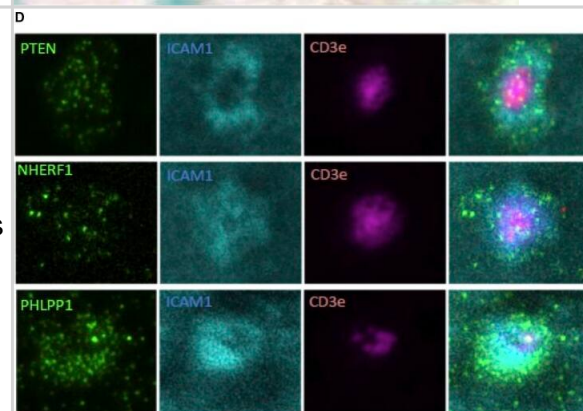
Immunocytochemistry/Immunofluorescence: NHERF-1 Antibody [NB300-536] - Phosphatase and NHERF1 assembly at the immunologic synapse. PTEN, NHERF-1, and PHLPP subcellular localization in relation to the central supramolecular activation complex (indicated by CD3 staining) and peripheral supramolecular activation complex (indicated by ICAM-1 staining) was analyzed by using TIRF microscopy. Differences were analyzed by using the Mann-Whitney U test. Image collected and cropped by CiteAb from the following publication (<https://linkinghub.elsevier.com/retrieve/pii/S0091674916304973>) licensed under a CC-BY license.



Immunohistochemistry: NHERF-1 Antibody [NB300-536] - Immunohistochemical staining of NERF-1 / EBP50 in mouse airway.



Phosphatase and NHERF1 assembly at the immunologic synapse. A-C, Laser-scanning microscopy of CD4+CD25+ T cells stimulated on CD3- and ICAM-1-coated glass slides. Time-dependent accumulation of PHLPP, PTEN, and NHERF1 after anti-CD3-mediated TCR activation was assessed by measuring protein accumulation in the planar layer adjacent to the glass slide. Exposure to ICAM-1 without TCR engagement served as a negative control. Dots represent individual cells analyzed. D, PTEN, NHERF1, and PHLPP subcellular localization in relation to the central supramolecular activation complex (indicated by CD3 staining) and peripheral supramolecular activation complex (indicated by ICAM-1 staining) was analyzed by using TIRF microscopy. Differences were analyzed by using the Mann-Whitney U test. Image collected and cropped by CiteAb from the following open publication (<https://pubmed.ncbi.nlm.nih.gov/27477328>), licensed under a CC-BY license. Not internally tested by Novus Biologicals.



Publications

Hartmann C, Thüring E, Michels B, et al. A novel adhesive complex at the base of intestinal microcilli bioRxiv 2021-01-28

Chen HH, Handel N, Ngeow J et al. Immune dysregulation in patients with PTEN hamartoma tumor syndrome: Analysis of FOXP3 regulatory T cells. *J. Allergy Clin. Immunol.* 2017-02-01 [PMID: 27477328]

Ji M, Fan D, Yuan L et al. EBP50 inhibits pancreatic cancer cell growth and invasion by targeting the beta-catenin/E-cadherin pathway. *Exp Ther Med* 2015-10-01 [PMID: 26622484] (IF/IHC)

Huang T, You Y, Spoor MS, Richer EJ, Kudva VV, Paige RC, Seiler MP, Liebler JM, Zabner J, Plopper CG, Brody SL. Foxj1 is required for apical localization of ezrin in airway epithelial cells. *J Cell Sci*;116(Pt 24):4935-45. 2003-12-15 [PMID: 14625387] (ICC/IF)





Novus Biologicals USA

10730 E. Briarwood Avenue
Centennial, CO 80112
USA
Phone: 303.730.1950
Toll Free: 1.888.506.6887
Fax: 303.730.1966
nb-customerservice@bio-techne.com

Bio-Techne Canada

21 Canmotor Ave
Toronto, ON M8Z 4E6
Canada
Phone: 905.827.6400
Toll Free: 855.668.8722
Fax: 905.827.6402
canada.inquires@bio-techne.com

Bio-Techne Ltd

19 Barton Lane
Abingdon Science Park
Abingdon, OX14 3NB, United Kingdom
Phone: (44) (0) 1235 529449
Free Phone: 0800 37 34 15
Fax: (44) (0) 1235 533420
info.EMEA@bio-techne.com

General Contact Information

www.novusbio.com
Technical Support: nb-technical@bio-techne.com
Orders: nb-customerservice@bio-techne.com
General: novus@novusbio.com

Products Related to NB300-536

NBP2-33376H	Blue Marker Antibody (6F4-F6) [HRP]
HAF008	Goat anti-Rabbit IgG Secondary Antibody [HRP]
NB7160	Goat anti-Rabbit IgG (H+L) Secondary Antibody [HRP]
NBP2-24891	Rabbit IgG Isotype Control

Limitations

This product is for research use only and is not approved for use in humans or in clinical diagnosis. Primary Antibodies are guaranteed for 1 year from date of receipt.

For more information on our 100% guarantee, please visit www.novusbio.com/guarantee

Earn gift cards/discounts by submitting a review: www.novusbio.com/reviews/submit/NB300-536

Earn gift cards/discounts by submitting a publication using this product:
www.novusbio.com/publications

