

# Product Datasheet

## SERCA2 ATPase Antibody (IID8) - BSA Free NB300-529

Unit Size: 100uL

Store at -20C. Avoid freeze-thaw cycles.

[www.novusbio.com](http://www.novusbio.com)



[technical@novusbio.com](mailto:technical@novusbio.com)

### Publications: 8

Protocols, Publications, Related Products, Reviews, Research Tools and Images at:  
[www.novusbio.com/NB300-529](http://www.novusbio.com/NB300-529)

Updated 9/9/2025 v.20.1

Earn rewards for product  
reviews and publications.

Submit a publication at [www.novusbio.com/publications](http://www.novusbio.com/publications)

Submit a review at [www.novusbio.com/reviews/destination/NB300-529](http://www.novusbio.com/reviews/destination/NB300-529)

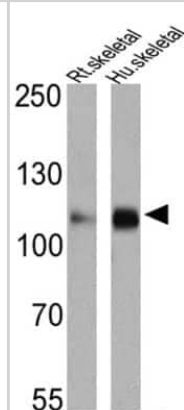


**NB300-529****SERCA2 ATPase Antibody (IID8) - BSA Free**

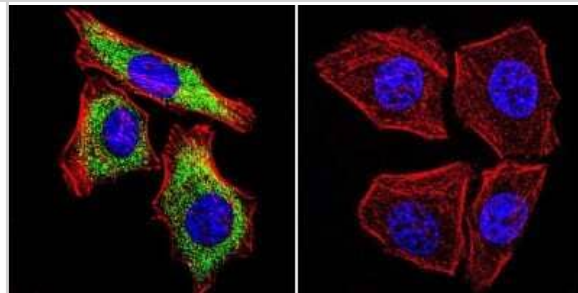
<b>Product Information</b>	
<b>Unit Size</b>	100uL
<b>Concentration</b>	1 mg/ml
<b>Storage</b>	Store at -20C. Avoid freeze-thaw cycles.
<b>Clonality</b>	Monoclonal
<b>Clone</b>	IID8
<b>Preservative</b>	0.05% Sodium Azide
<b>Isotype</b>	IgG1
<b>Purity</b>	Immunogen affinity purified
<b>Buffer</b>	PBS
<b>Product Description</b>	
<b>Description</b>	Novus Biologicals Mouse SERCA2 ATPase Antibody (IID8) - BSA Free (NB300-529) is a monoclonal antibody validated for use in IHC, WB, ELISA, Flow and ICC/IF. Anti-SERCA2 ATPase Antibody: Cited in 8 publications. All Novus Biologicals antibodies are covered by our 100% guarantee.
<b>Host</b>	Mouse
<b>Gene ID</b>	488
<b>Gene Symbol</b>	ATP2A2
<b>Species</b>	Human, Mouse, Rat, Porcine, Amphibian, Bovine, Canine, Guinea Pig, Hamster, Primate, Rabbit, Sheep, Virus
<b>Reactivity Notes</b>	Please note that this antibody is reactive to Mouse and derived from the same host, Mouse. Additional Mouse on Mouse blocking steps may be required for IHC and ICC experiments. Please contact Technical Support for more information.
<b>Specificity/Sensitivity</b>	Detects Sarcoplasmic or Endoplasmic Reticulum Calcium 2 (SERCA2) ATPase. This does not discriminate between the two isoforms.
<b>Immunogen</b>	Purified canine cardiac sarcoplasmic reticulum.
<b>Product Application Details</b>	
<b>Applications</b>	Western Blot, Immunohistochemistry-Paraffin, ELISA, Flow Cytometry, Immunocytochemistry/ Immunofluorescence, Immunohistochemistry, Immunohistochemistry-Frozen, Block/Neutralize
<b>Recommended Dilutions</b>	Western Blot 1:500 - 1:5000, Flow Cytometry 1 ug / 10 <sup>6</sup> cells, ELISA 1:100 - 1:2000, Immunohistochemistry 1:10 - 1:500, Immunocytochemistry/ Immunofluorescence 1:100 - 1:200, Immunohistochemistry-Paraffin 1 ug/ml, Immunohistochemistry-Frozen 1:500, Block/Neutralize
<b>Application Notes</b>	WB: Detects an approx. 110 kDa protein representing SERCA2 ATPase from canine skeletal muscle triad preparations. Not recommended for WB detection of rat SERCA2. IF: Staining of SECRA2 ATPase in rabbit skeletal muscle results in strong labeling of the entire type I (slow) myofiber consistent with sarcoplasmic reticulum localization. May be useful in Flow.

## Images

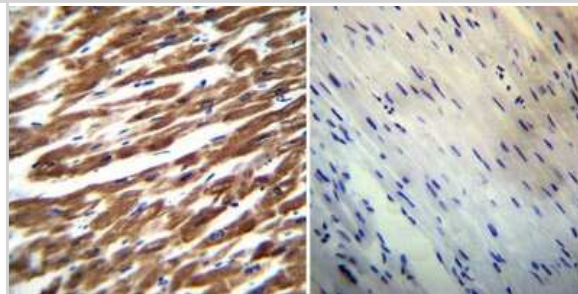
Western Blot: SERCA2 ATPase Antibody (IID8) [NB300-529] - Analysis of 25 ug of rat skeletal muscle (lane 1) and human skeletal muscle (lane 2).



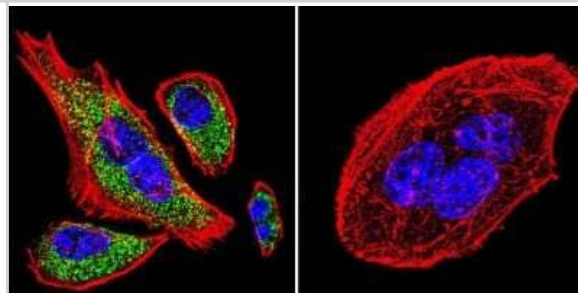
Immunocytochemistry/Immunofluorescence: SERCA2 ATPase Antibody (IID8) [NB300-529] - SERCA2 ATPase staining (green), F-Actin staining with Phalloidin (red) and nuclei with DAPI (blue) is shown. Cells were grown on chamber slides and fixed with formaldehyde prior to staining. Cells were probed without (control) or with or an antibody recognizing SERCA2 ATPase at a dilution of 1:100-1:200 over night at 4C, washed with PBS and incubated with a DyLight-488 conjugated.



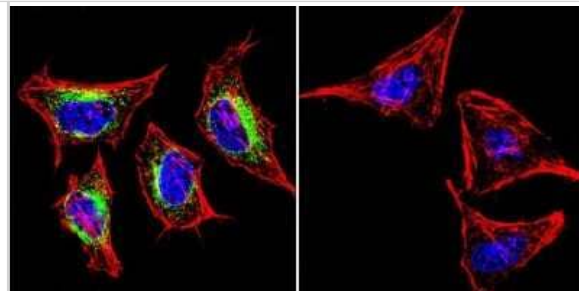
Immunohistochemistry-Paraffin: SERCA2 ATPase Antibody (IID8) [NB300-529] - Both normal and cancer biopsies of deparaffinized human Heart tissue.



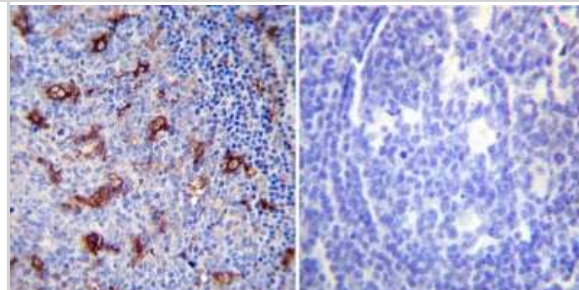
Immunocytochemistry/Immunofluorescence: SERCA2 ATPase Antibody (IID8) [NB300-529] - SERCA2 ATPase staining (green), F-Actin staining with Phalloidin (red) and nuclei with DAPI (blue) is shown. Cells were grown on chamber slides and fixed with formaldehyde prior to staining. Cells were probed without (control) or with or an antibody recognizing SERCA2 ATPase at a dilution of 1:100-1:200 over night at 4C, washed with PBS and incubated with a DyLight-488 conjugated.



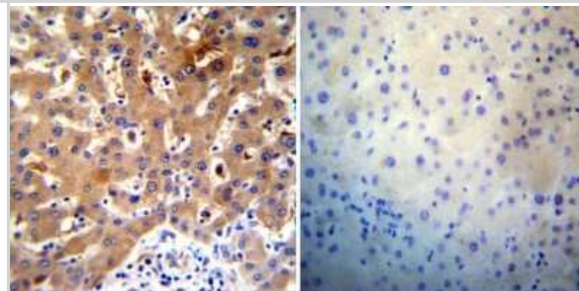
Immunocytochemistry/Immunofluorescence: SERCA2 ATPase Antibody (IID8) [NB300-529] - SERCA2 ATPase staining (green), F-Actin staining with Phalloidin (red) and nuclei with DAPI (blue) is shown. Cells were grown on chamber slides and fixed with formaldehyde prior to staining. Cells were probed without (control) or with or an antibody recognizing SERCA2 ATPase at a dilution of 1:100-1:200 over night at 4C, washed with PBS and incubated with a DyLight-488 conjugated.



Immunohistochemistry-Paraffin: SERCA2 ATPase Antibody (IID8) [NB300-529] - Both normal and cancer biopsies of deparaffinized human Tonsil tissue.



Immunohistochemistry-Paraffin: SERCA2 ATPase Antibody (IID8) [NB300-529] - Both normal and cancer biopsies of deparaffinized human Liver tissue.



## Publications

Tagliari AP, Taramasso M. The Heart in the Transcatheter Intervention Era: Where Are We? *Journal of clinical medicine* 2022-09-01 [PMID: 36079102]

Combot Y, Salo VT, Chadeuf G et al. Seipin localizes at endoplasmic-reticulum-mitochondria contact sites to control mitochondrial calcium import and metabolism in adipocytes *Cell reports* 2022-01-11 [PMID: 35021082]

Sun A, Wei J, Childress C et al. The E3 ubiquitin ligase NEDD4 is an LC3-interactive protein and regulates autophagy *Autophagy*. 2017-01-12 [PMID: 28085563] (ICC/IF, Human)

Kjellgren D, Ryan M, Ohlendieck K et al. Sarco(endo)plasmic reticulum Ca<sup>2+</sup> ATPases (SERCA1 and -2) in human extraocular muscles. *Invest Ophthalmol Vis Sci*. 2003-12-01 [PMID: 14638697]

Chauvet V, Tian X, Husson H, Grimm DH, Wang T, Hiesberger T, Igarashi P, Bennett AM, Ibraghimov-Beskrovnaya O, Somlo S, Caplan MJ. Mechanical stimuli induce cleavage and nuclear translocation of the polycystin-1 C terminus. *J Clin Invest* 114(10):1433-43. 2004-11-01 [PMID: 15545994]

Molnar E, Seidler NW, Jona I, Martonosi AN. The binding of monoclonal and polyclonal antibodies to the Ca<sup>2+</sup>(+)-ATPase of sarcoplasmic reticulum: effects on interactions between ATPase molecules. *Biochim Biophys Acta* 1023(2):147-67. 1990-04-13 [PMID: 1691656]

Adachi T, Matsui R, Xu S et al. Antioxidant improves smooth muscle sarco/endoplasmic reticulum Ca<sup>2+</sup>-ATPase function and lowers tyrosine nitration in hypercholesterolemia and improves nitric oxide-induced relaxation. *Circ Res* 90(10):1114-21. 2002-05-31 [PMID: 12039802]

Leatherbury L, Yu Q, Chatterjee B et al. A novel mouse model of X-linked cardiac hypertrophy. *Am J Physiol Heart Circ Physiol* 2008-04-18 [PMID: 18424640]





### **Novus Biologicals USA**

10730 E. Briarwood Avenue  
Centennial, CO 80112  
USA  
Phone: 303.730.1950  
Toll Free: 1.888.506.6887  
Fax: 303.730.1966  
nb-customerservice@bio-techne.com

### **Bio-Techne Canada**

21 Canmotor Ave  
Toronto, ON M8Z 4E6  
Canada  
Phone: 905.827.6400  
Toll Free: 855.668.8722  
Fax: 905.827.6402  
canada.inquires@bio-techne.com

### **Bio-Techne Ltd**

19 Barton Lane  
Abingdon Science Park  
Abingdon, OX14 3NB, United Kingdom  
Phone: (44) (0) 1235 529449  
Free Phone: 0800 37 34 15  
Fax: (44) (0) 1235 533420  
info.EMEA@bio-techne.com

### **General Contact Information**

www.novusbio.com  
Technical Support: nb-technical@bio-techne.com  
Orders: nb-customerservice@bio-techne.com  
General: novus@novusbio.com

### **Products Related to NB300-529**

---

NBP2-33376H	Blue Marker Antibody (6F4-F6) [HRP]
HAF007	Goat anti-Mouse IgG Secondary Antibody [HRP]
NB7539	Goat anti-Mouse IgG (H+L) Secondary Antibody [HRP]
NBP1-97005-0.5mg	Mouse IgG1 Isotype Control (MG1)

---

### **Limitations**

This product is for research use only and is not approved for use in humans or in clinical diagnosis. Primary Antibodies are guaranteed for 1 year from date of receipt.

For more information on our 100% guarantee, please visit [www.novusbio.com/guarantee](http://www.novusbio.com/guarantee)

Earn gift cards/discounts by submitting a review: [www.novusbio.com/reviews/submit/NB300-529](http://www.novusbio.com/reviews/submit/NB300-529)

Earn gift cards/discounts by submitting a publication using this product:  
[www.novusbio.com/publications](http://www.novusbio.com/publications)

