

Product Datasheet

Endothelin-1 Antibody (TR.ET.48.5) - BSA Free NB300-526

Unit Size: 100 uL

Store at -20C. Avoid freeze-thaw cycles.

www.novusbio.com



technical@novusbio.com

Reviews: 1 Publications: 10

Protocols, Publications, Related Products, Reviews, Research Tools and Images at:
www.novusbio.com/NB300-526

Updated 9/9/2025 v.20.1

**Earn rewards for product
reviews and publications.**

Submit a publication at www.novusbio.com/publications

Submit a review at www.novusbio.com/reviews/destination/NB300-526



NB300-526

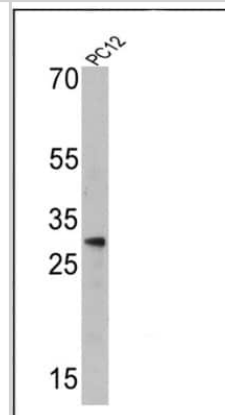
Endothelin-1 Antibody (TR.ET.48.5) - BSA Free

Product Information	
Unit Size	100 uL
Concentration	2.5 mg/ml
Storage	Store at -20C. Avoid freeze-thaw cycles.
Clonality	Monoclonal
Clone	TR.ET.48.5
Preservative	0.05% Sodium Azide
Isotype	IgG1
Purity	Immunogen affinity purified
Buffer	PBS
Product Description	
Description	Novus Biologicals Mouse Endothelin-1 Antibody (TR.ET.48.5) - BSA Free (NB300-526) is a monoclonal antibody validated for use in IHC, WB, Flow and ICC/IF. Anti-Endothelin-1 Antibody: Cited in 9 publications. All Novus Biologicals antibodies are covered by our 100% guarantee.
Host	Mouse
Gene ID	1906
Gene Symbol	EDN1
Species	Human, Mouse, Rat, Porcine, Canine, Rabbit, Sheep
Reactivity Notes	Canine reactivity reported in scientific literature (PMID: 11673223). Rabbit reactivity reported in scientific literature (PMID: 12181591). Porcine reactivity reported in scientific literature (PMID: 21587116). Please note that this antibody is reactive to Mouse and derived from the same host, Mouse. Additional Mouse on Mouse blocking steps may be required for IHC and ICC experiments. Please contact Technical Support for more information.
Immunogen	Pure endothelin-1 conjugated to KLH.
Product Application Details	
Applications	Western Blot, Immunohistochemistry-Paraffin, Flow Cytometry, Immunocytochemistry/ Immunofluorescence, Immunohistochemistry, Immunohistochemistry-Frozen, Radioimmunoassay
Recommended Dilutions	Western Blot 1:100 - 1:1000, Flow Cytometry 0.5 ug, Immunohistochemistry 1:250, Immunocytochemistry/ Immunofluorescence 1:200 - 1:1000, Immunohistochemistry-Paraffin 1:250, Immunohistochemistry-Frozen 1:250, Radioimmunoassay 1:25000
Application Notes	IHC: Staining of ET-1 in human corpus cavernosum tissue with this antibody results in staining of endothelial cells. Radioimmune assays can be used to concentrate ET-1 in solution (e.g. serum/plasma, milk, urine).

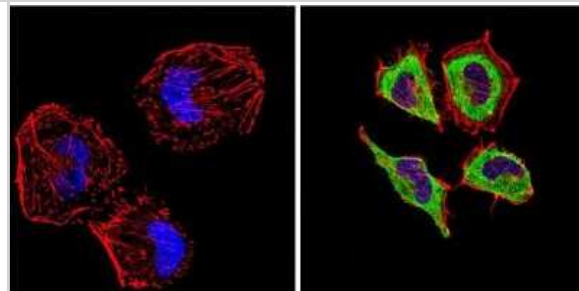


Images

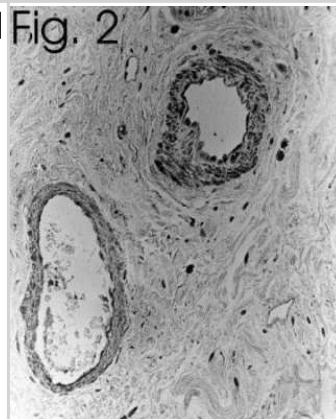
Western Blot: Endothelin-1 Antibody (TR.ET.48.5) [NB300-526] - Analysis of 25 ug of PC12 cell lysates.



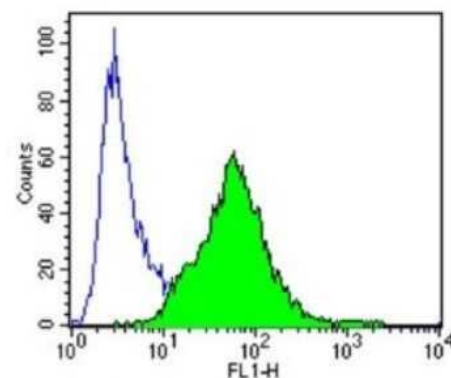
Immunocytochemistry/Immunofluorescence: Endothelin-1 Antibody (TR.ET.48.5) [NB300-526] - Analysis of Endothelin 1 (green) showing positive staining in the secretion of Hela cells (right) compared with a negative control in the absence of primary antibody (left).



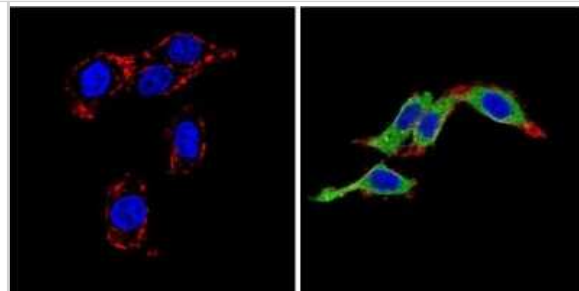
Immunohistochemistry: Endothelin-1 Antibody (TR.ET.48.5) [NB300-526] - Immunolocalization of ET-1 in human bowel.



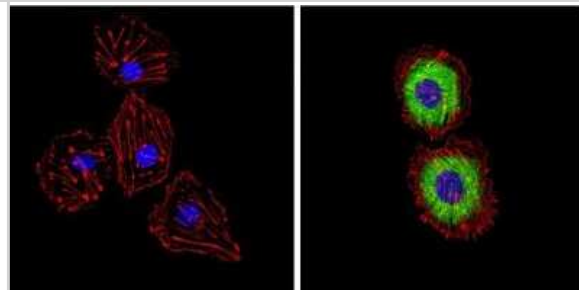
Flow Cytometry: Endothelin-1 Antibody (TR.ET.48.5) [NB300-526] - Analysis of Endothelin 1 in 3T3 cells compared to an isotype control (blue).



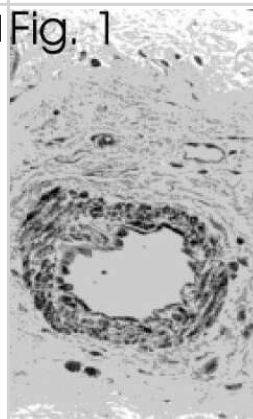
Immunocytochemistry/Immunofluorescence: Endothelin-1 Antibody (TR.ET.48.5) [NB300-526] - Analysis of Endothelin 1 (green) showing positive staining in the secretion of PC12 cells (right) compared with a negative control in the absence of primary antibody (left).



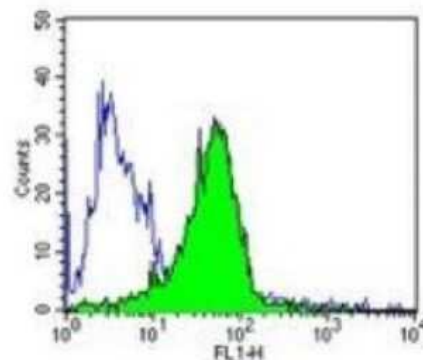
Immunocytochemistry/Immunofluorescence: Endothelin-1 Antibody (TR.ET.48.5) [NB300-526] - Analysis of Endothelin 1 (green) showing positive staining in the secretion of HUVEC cells (right) compared with a negative control in the absence of primary antibody (left).



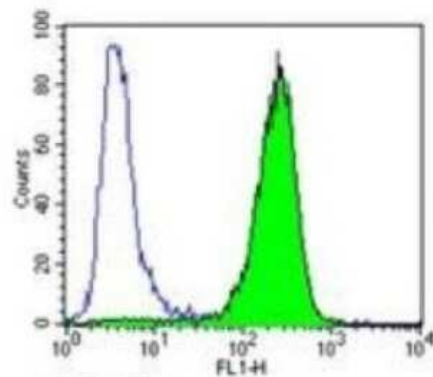
Immunohistochemistry: Endothelin-1 Antibody (TR.ET.48.5) [NB300-526] - Immunolocalization of ET-1 in human bowel.



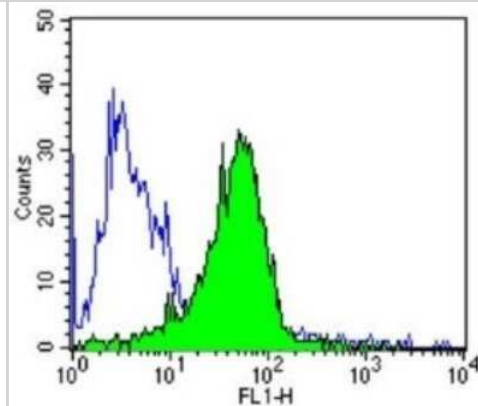
Flow Cytometry: Endothelin-1 Antibody (TR.ET.48.5) [NB300-526] - Analysis of Endothelin 1 in HepG2 cells compared to an isotype control (blue).



Flow Cytometry: Endothelin-1 Antibody (TR.ET.48.5) [NB300-526] - Analysis of Endothelin 1 in 293T cells compared to an isotype control (blue).



Flow Cytometry: Endothelin-1 Antibody (TR.ET.48.5) [NB300-526] - Analysis of Endothelin 1 in HepG2 cells compared to an isotype control (blue).



Publications

Gao L, Shi Q, Sun B et al. c-FLIP Protects Cardiac Microcirculation in Sepsis-Induced Myocardial Dysfunction Via FUNDC1-Mediated Regulation of Mitochondrial Autophagy. *JACC: Basic to Translational Science* 2025-03-31 [PMID: 40372306]

Teixeira M, Trindade D, Gouveia M et al. Proteostasis Response to Protein Misfolding in Controlled Hypertension Cells 2022-05-19 [PMID: 35626723] (Immunohistochemistry, Human)

Yuan M, Hu X, Xing W et al. B2M is a Biomarker Associated With Immune Infiltration In High Altitude Pulmonary Edema Comb Chem High Throughput Screen 2024-01-15 [PMID: 37165489]

Xin Shi, Panpan Li, Marc Herb, Hanhan Liu, Maoren Wang, Xiaosha Wang, Yuan Feng, Tim van Beers, Ning Xia, Huige Li, Verena Prokosch Pathological high intraocular pressure induces glial cell reactive proliferation contributing to neuroinflammation of the blood-retinal barrier via the NOX2/ET-1 axis-controlled ERK1/2 pathway *Journal of Neuroinflammation* 2024-04-22 [PMID: 38649885]

Cao L, Wang S, Zhang L, Li J mPEG-b-P(Glu-co-Phe) nanoparticles increase gastric retention time and gastric ulcer treatment efficacy of 20(S)-ginsenoside Rg3 *Biomedicine & Pharmacotherapy* 2022-02-01 [PMID: 35062071] (IHC-P, Rat)

Wang M, Milic M, Gericke A Et al. Chronic social defeat stress causes retinal vascular dysfunction *Experimental eye research* 2021-11-18 [PMID: 34800481] (IF/IHC, Mouse)

Giusti Delphine, Bini Estela, Terry Christine et al. NET Formation in Bullous Pemphigoid Patients With Relapse Is Modulated by IL-17 and IL-23 Interplay. *Frontiers in Microbiology* 2019-04-04 [PMID: 31019514] (IHC-P, Human)

Chen I-Chen, Lin Yu-Tsai, Huang Jhy-Shrian et al. Decreased Ambient Oxygen Tension Alters the Expression of Endothelin-1, iNOS and cGMP in Rat Alveolar Macrophages. *International Journal of Medical Sciences* 2019-02-28 [PMID: 30911278] (WB, Rat)

Mitrakas L, Gravas S, Karasavvidou F et al. Endothelin-1 overexpression: a potential biomarker of unfavorable prognosis in non-metastatic muscle-invasive bladder cancer *Tumour Biol.* 2015-01-28 [PMID: 25627007]

Talati M, West J, Blackwell TR et al. BMPR2 mutation alters the lung macrophage endothelin-1 cascade in a mouse model and patients with heritable pulmonary artery hypertension *Am J Physiol Lung Cell Mol Physiol* 2010-09-01 [PMID: 20562228] (IF/IHC, Human)





Novus Biologicals USA

10730 E. Briarwood Avenue
Centennial, CO 80112
USA
Phone: 303.730.1950
Toll Free: 1.888.506.6887
Fax: 303.730.1966
nb-customerservice@bio-techne.com

Bio-Techne Canada

21 Canmotor Ave
Toronto, ON M8Z 4E6
Canada
Phone: 905.827.6400
Toll Free: 855.668.8722
Fax: 905.827.6402
canada.inquires@bio-techne.com

Bio-Techne Ltd

19 Barton Lane
Abingdon Science Park
Abingdon, OX14 3NB, United Kingdom
Phone: (44) (0) 1235 529449
Free Phone: 0800 37 34 15
Fax: (44) (0) 1235 533420
info.EMEA@bio-techne.com

General Contact Information

www.novusbio.com
Technical Support: nb-technical@bio-techne.com
Orders: nb-customerservice@bio-techne.com
General: novus@novusbio.com

Products Related to NB300-526

NBP2-33376H	Blue Marker Antibody (6F4-F6) [HRP]
HAF007	Goat anti-Mouse IgG Secondary Antibody [HRP]
NB7539	Goat anti-Mouse IgG (H+L) Secondary Antibody [HRP]
NBP1-97005-0.5mg	Mouse IgG1 Isotype Control (MG1)

Limitations

This product is for research use only and is not approved for use in humans or in clinical diagnosis. Primary Antibodies are guaranteed for 1 year from date of receipt.

For more information on our 100% guarantee, please visit www.novusbio.com/guarantee

Earn gift cards/discounts by submitting a review: www.novusbio.com/reviews/submit/NB300-526

Earn gift cards/discounts by submitting a publication using this product:
www.novusbio.com/publications

