

Product Datasheet

RGS16 Antibody - BSA Free NB300-350

Unit Size: 0.05 mg

Store at 4C short term. Aliquot and store at -20C long term. Avoid freeze-thaw cycles.

www.novusbio.com



technical@novusbio.com

Publications: 1

Protocols, Publications, Related Products, Reviews, Research Tools and Images at:
www.novusbio.com/NB300-350

Updated 9/9/2025 v.20.1

Earn rewards for product
reviews and publications.

Submit a publication at www.novusbio.com/publications

Submit a review at www.novusbio.com/reviews/destination/NB300-350



NB300-350

RGS16 Antibody - BSA Free

Product Information	
Unit Size	0.05 mg
Concentration	1.0 mg/ml
Storage	Store at 4C short term. Aliquot and store at -20C long term. Avoid freeze-thaw cycles.
Clonality	Polyclonal
Preservative	0.02% Sodium Azide
Purity	Immunogen affinity purified
Buffer	PBS

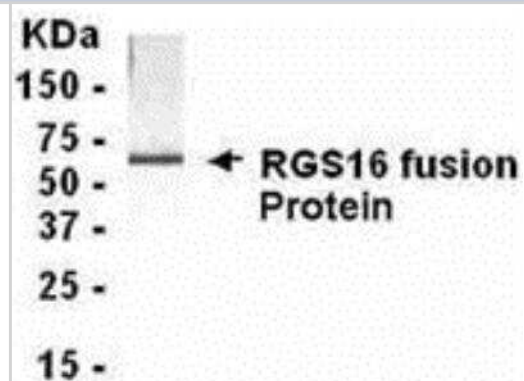
Product Description	
Description	Novus Biologicals Chicken RGS16 Antibody - BSA Free (NB300-350) is a polyclonal antibody validated for use in IHC, WB and ICC/IF. Anti-RGS16 Antibody: Cited in 1 publication. All Novus Biologicals antibodies are covered by our 100% guarantee.
Host	Chicken
Gene ID	6004
Gene Symbol	RGS16
Species	Human, Mouse, Rat
Reactivity Notes	Cross-reacts with Human, Mouse and Rat..Not yet tested in other species.
Specificity/Sensitivity	RGS16
Immunogen	Synthetic peptide: corresponding to amino acids 130-202 of Human RGS16 (NP_002919.1).
Notes	Chicken products cannot be exported to Canada.

Product Application Details	
Applications	Western Blot, Immunocytochemistry/ Immunofluorescence, Immunohistochemistry, Immunohistochemistry-Frozen
Recommended Dilutions	Western Blot 1:200-1:500, Immunohistochemistry, Immunocytochemistry/ Immunofluorescence 1:10-1:500, Immunohistochemistry-Frozen
Application Notes	ICC: Use at a dilution of 1/200. WB: Use at a dilution of 1/2000. Predicted molecular weight: 24 kDa. Optimal dilutions/concentrations should be determined by the end user. Use in Immunohistochemistry reported in scientific literature (PMID: 23858031) Use in Immunohistochemistry-Frozen reported in scientific literature (PMID 23858031)



Images

Western Blot: RGS16 Antibody [NB300-350] - E coli-derived fusion protein as test antigen. Affi-anti- RGS16 IgY dilution: 1:2000, Goat anti-IgY-HRP dilution: 1:1000. Colorimetric method for signal development. (anti-RGS16)



Publications

Ding Y, Li J, Wu Q et al. IL-17RA Is Essential for Optimal Localization of Follicular Th Cells in the Germinal Center Light Zone To Promote Autoantibody-Producing B Cells. J Immunol 2013-08-15 [PMID: 23858031] (IHC-Fr, ICC/IF, WB, Mouse)



Novus Biologicals USA

10730 E. Briarwood Avenue
Centennial, CO 80112
USA
Phone: 303.730.1950
Toll Free: 1.888.506.6887
Fax: 303.730.1966
nb-customerservice@bio-techne.com

Bio-Techne Canada

21 Canmotor Ave
Toronto, ON M8Z 4E6
Canada
Phone: 905.827.6400
Toll Free: 855.668.8722
Fax: 905.827.6402
canada.inquires@bio-techne.com

Bio-Techne Ltd

19 Barton Lane
Abingdon Science Park
Abingdon, OX14 3NB, United Kingdom
Phone: (44) (0) 1235 529449
Free Phone: 0800 37 34 15
Fax: (44) (0) 1235 533420
info.EMEA@bio-techne.com

General Contact Information

www.novusbio.com
Technical Support: nb-technical@bio-techne.com
Orders: nb-customerservice@bio-techne.com
General: novus@novusbio.com

Products Related to NB300-350

NBP2-33376H	Blue Marker Antibody (6F4-F6) [HRP]
BAF010	Goat anti-Chicken IgY Secondary Antibody [Biotin]
NB7276	Goat anti-Chicken IgM Heavy Chain Secondary Antibody
NBP1-41226	Recombinant Human RGS16 His Protein

Limitations

This product is for research use only and is not approved for use in humans or in clinical diagnosis. Primary Antibodies are guaranteed for 1 year from date of receipt.

For more information on our 100% guarantee, please visit www.novusbio.com/guarantee

Earn gift cards/discounts by submitting a review: www.novusbio.com/reviews/submit/NB300-350

Earn gift cards/discounts by submitting a publication using this product:
www.novusbio.com/publications

