

# Product Datasheet

## Albumin Antibody - BSA Free NB300-336

Unit Size: 0.05 mg

Store at 4C short term. Aliquot and store at -20C long term. Avoid freeze-thaw cycles.

[www.novusbio.com](http://www.novusbio.com)



[technical@novusbio.com](mailto:technical@novusbio.com)

Protocols, Publications, Related Products, Reviews, Research Tools and Images at:  
[www.novusbio.com/NB300-336](http://www.novusbio.com/NB300-336)

Updated 9/9/2025 v.20.1

Earn rewards for product  
reviews and publications.

Submit a publication at [www.novusbio.com/publications](http://www.novusbio.com/publications)

Submit a review at [www.novusbio.com/reviews/destination/NB300-336](http://www.novusbio.com/reviews/destination/NB300-336)



**NB300-336**

Albumin Antibody - BSA Free

Product Information	
Unit Size	0.05 mg
Concentration	1.0 mg/ml
Storage	Store at 4C short term. Aliquot and store at -20C long term. Avoid freeze-thaw cycles.
Clonality	Polyclonal
Preservative	0.02% Sodium Azide
Isotype	IgY
Purity	Immunogen affinity purified
Buffer	PBS

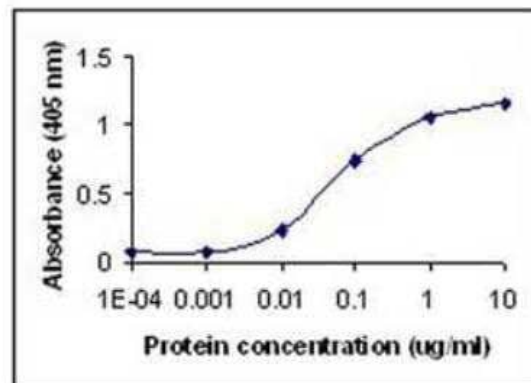
Product Description	
Description	Novus Biologicals Chicken Albumin Antibody - BSA Free (NB300-336) is a polyclonal antibody validated for use in WB and ELISA. All Novus Biologicals antibodies are covered by our 100% guarantee.
Host	Chicken
Gene ID	213
Gene Symbol	ALB
Species	Human, Mouse, Rat, Porcine, Bovine, Canine
Reactivity Notes	Cross-reacts with Human, Mouse, Rat, Cow, Dog and Pig. Not yet tested in other species.
Specificity/Sensitivity	Albumin
Immunogen	Recombinant serum albumin (GI # 113576) sequence 1-609
Notes	Chicken products cannot be exported to Canada.

Product Application Details	
Applications	Western Blot, ELISA
Recommended Dilutions	Western Blot 1:200-1:500, ELISA 1:100-1:2000
Application Notes	This antibody can be used in ELISA and Western Blot. In Western Blot a 69.4 kDa band is seen. Recommended Starting Dilutions*: ELISA: 0.1-0.5 ug/ml WB: 1/1000 Not tested in other applications. *Optimal dilutions should be determined by the end user.



## Images

ELISA: Albumin Antibody [NB300-336] - Direct ELISA Test. Human serum albumin protein as test antigen. Affi-pure anti-HSA IgY as primary antibody (0.1 ug/ml), and Rabbit anti-IgY-HRP as 2nd antibody. ( anti-ALB )





### **Novus Biologicals USA**

10730 E. Briarwood Avenue  
Centennial, CO 80112  
USA  
Phone: 303.730.1950  
Toll Free: 1.888.506.6887  
Fax: 303.730.1966  
nb-customerservice@bio-techne.com

### **Bio-Techne Canada**

21 Canmotor Ave  
Toronto, ON M8Z 4E6  
Canada  
Phone: 905.827.6400  
Toll Free: 855.668.8722  
Fax: 905.827.6402  
canada.inquires@bio-techne.com

### **Bio-Techne Ltd**

19 Barton Lane  
Abingdon Science Park  
Abingdon, OX14 3NB, United Kingdom  
Phone: (44) (0) 1235 529449  
Free Phone: 0800 37 34 15  
Fax: (44) (0) 1235 533420  
info.EMEA@bio-techne.com

### **General Contact Information**

www.novusbio.com  
Technical Support: nb-technical@bio-techne.com  
Orders: nb-customerservice@bio-techne.com  
General: novus@novusbio.com

### **Products Related to NB300-336**

---

NBL1-07449	Human Serum Albumin Overexpression Lysate
NBP2-33376H	Blue Marker Antibody (6F4-F6) [HRP]
BAF010	Goat anti-Chicken IgY Secondary Antibody [Biotin]
NB7276	Goat anti-Chicken IgM Heavy Chain Secondary Antibody

---

### **Limitations**

This product is for research use only and is not approved for use in humans or in clinical diagnosis. Primary Antibodies are guaranteed for 1 year from date of receipt.

For more information on our 100% guarantee, please visit [www.novusbio.com/guarantee](http://www.novusbio.com/guarantee)

Earn gift cards/discounts by submitting a review: [www.novusbio.com/reviews/submit/NB300-336](http://www.novusbio.com/reviews/submit/NB300-336)

Earn gift cards/discounts by submitting a publication using this product:  
[www.novusbio.com/publications](http://www.novusbio.com/publications)

