

Product Datasheet

GRASP1 Antibody - Azide Free NB300-310

Unit Size: 0.1 ml

Store at -20C. Avoid freeze-thaw cycles.

www.novusbio.com



technical@novusbio.com

Protocols, Publications, Related Products, Reviews, Research Tools and Images at:
www.novusbio.com/NB300-310

Updated 9/9/2025 v.20.1

Earn rewards for product
reviews and publications.

Submit a publication at www.novusbio.com/publications

Submit a review at www.novusbio.com/reviews/destination/NB300-310



NB300-310

GRASP1 Antibody - Azide Free

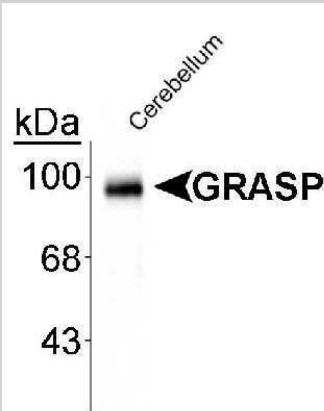
| Product Information | |
|-------------------------|---|
| Unit Size | 0.1 ml |
| Concentration | Please see the vial label for concentration. If unlisted please contact technical services. |
| Storage | Store at -20C. Avoid freeze-thaw cycles. |
| Clonality | Polyclonal |
| Preservative | No Preservative |
| Isotype | IgG |
| Purity | Antigen Affinity-purified |
| Buffer | 10mM HEPES (pH 7.5), 0.15M NaCl, 0.1 mg/ml BSA and 50% Glycerol |
| Target Molecular Weight | 95 kDa |

| Product Description | |
|-------------------------|---|
| Description | Novus Biologicals Rabbit GRASP1 Antibody - Azide Free (NB300-310) is a polyclonal antibody validated for use in WB. All Novus Biologicals antibodies are covered by our 100% guarantee. |
| Host | Rabbit |
| Gene ID | 56850 |
| Gene Symbol | GRIPAP1 |
| Species | Mouse, Rat |
| Reactivity Notes | It is anticipated that the antibody will react with bovine, canine, human and mouse based on the fact that these species have 100% homology with the amino acid sequence used as antigen. |
| Specificity/Sensitivity | Specific for endogenous levels of the ~95 kDa GRASP1 protein. |
| Immunogen | Synthetic peptide corresponding to amino acid residues from the C-terminal region conjugated to KLH. Accession # Q9JHZ4 |

| Product Application Details | |
|-----------------------------|---------------------|
| Applications | Western Blot |
| Recommended Dilutions | Western Blot 1:1000 |

Images

Western Blot: General Receptor for phosphoinositides 1 Antibody [NB300-310] - Rat cerebellar lysate showing the specific immunolabeling of the ~95k GRASP protein, using NB300-310.





Novus Biologicals USA

10730 E. Briarwood Avenue
Centennial, CO 80112
USA
Phone: 303.730.1950
Toll Free: 1.888.506.6887
Fax: 303.730.1966
nb-customerservice@bio-techne.com

Bio-Techne Canada

21 Canmotor Ave
Toronto, ON M8Z 4E6
Canada
Phone: 905.827.6400
Toll Free: 855.668.8722
Fax: 905.827.6402
canada.inquires@bio-techne.com

Bio-Techne Ltd

19 Barton Lane
Abingdon Science Park
Abingdon, OX14 3NB, United Kingdom
Phone: (44) (0) 1235 529449
Free Phone: 0800 37 34 15
Fax: (44) (0) 1235 533420
info.EMEA@bio-techne.com

General Contact Information

www.novusbio.com
Technical Support: nb-technical@bio-techne.com
Orders: nb-customerservice@bio-techne.com
General: novus@novusbio.com

Products Related to NB300-310

| | |
|-------------|---|
| NBP2-33376H | Blue Marker Antibody (6F4-F6) [HRP] |
| HAF008 | Goat anti-Rabbit IgG Secondary Antibody [HRP] |
| NB7160 | Goat anti-Rabbit IgG (H+L) Secondary Antibody [HRP] |
| NBP2-24891 | Rabbit IgG Isotype Control |

Limitations

This product is for research use only and is not approved for use in humans or in clinical diagnosis. Primary Antibodies are guaranteed for 1 year from date of receipt.

For more information on our 100% guarantee, please visit www.novusbio.com/guarantee

Earn gift cards/discounts by submitting a review: www.novusbio.com/reviews/submit/NB300-310

Earn gift cards/discounts by submitting a publication using this product:
www.novusbio.com/publications

