

# Product Datasheet

## CREB [p Ser133] Antibody - Azide Free NB300-273

Unit Size: 0.1 ml

Store at -20C. Avoid freeze-thaw cycles.

[www.novusbio.com](http://www.novusbio.com)



[technical@novusbio.com](mailto:technical@novusbio.com)

**Publications: 10**

Protocols, Publications, Related Products, Reviews, Research Tools and Images at:  
[www.novusbio.com/NB300-273](http://www.novusbio.com/NB300-273)

Updated 9/9/2025 v.20.1

Earn rewards for product  
reviews and publications.

Submit a publication at [www.novusbio.com/publications](http://www.novusbio.com/publications)

Submit a review at [www.novusbio.com/reviews/destination/NB300-273](http://www.novusbio.com/reviews/destination/NB300-273)



**NB300-273****CREB [p Ser133] Antibody - Azide Free**

<b>Product Information</b>	
<b>Unit Size</b>	0.1 ml
<b>Concentration</b>	Please see the vial label for concentration. If unlisted please contact technical services.
<b>Storage</b>	Store at -20C. Avoid freeze-thaw cycles.
<b>Clonality</b>	Polyclonal
<b>Preservative</b>	No Preservative
<b>Isotype</b>	IgG
<b>Purity</b>	Antigen Affinity-purified
<b>Buffer</b>	10mM HEPES (pH 7.5), 0.15M NaCl, 0.1 mg/ml BSA and 50% Glycerol
<b>Target Molecular Weight</b>	45 kDa
<b>Product Description</b>	
<b>Description</b>	Novus Biologicals Rabbit CREB [p Ser133] Antibody - Azide Free (NB300-273) is a polyclonal antibody validated for use in IHC and WB. Anti-CREB Antibody: Cited in 10 publications. All Novus Biologicals antibodies are covered by our 100% guarantee.
<b>Host</b>	Rabbit
<b>Gene ID</b>	1385
<b>Gene Symbol</b>	CREB1
<b>Species</b>	Mouse, Rat
<b>Reactivity Notes</b>	Use in Rat reported in scientific literature (PMID:34346292). Mouse reactivity reported in scientific literature (PMID: 21838783). .
<b>Specificity/Sensitivity</b>	Specific for endogenous levels of the ~45 kDa CREB protein phosphorylated at Ser133. Immunolabeling is completely eliminated by treatment with lambda-phosphatase.
<b>Immunogen</b>	Synthetic phospho-peptide corresponding to amino acid residues surrounding Ser133 conjugated to KLH. Accession # P15337
<b>Product Application Details</b>	
<b>Applications</b>	Western Blot, Immunohistochemistry, Immunohistochemistry-Frozen
<b>Recommended Dilutions</b>	Western Blot 1:1000, Immunohistochemistry, Immunohistochemistry-Frozen 1:1000
<b>Application Notes</b>	This antibody has not been validated for use in paraffin embedded sections (IHC-P). For IHC-Fr, the antibody was used at 1:1000 and incubated for 48 hours at 4C. The dilution buffer used was 0.1M PBS, 0.5% Triton-100, and 3% normal serum. No antigen retrieval step was performed.

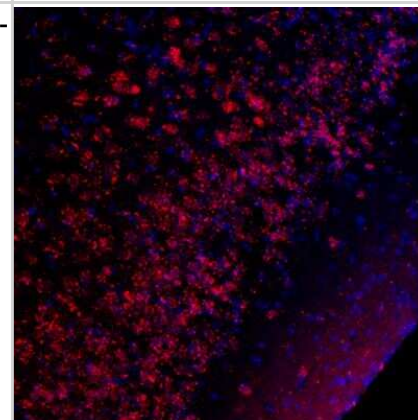


## Images

Western Blot: CREB [p Ser133] Antibody [NB300-273] - Rat hippocampal lysate stimulated with forskolin showing specific immunolabeling of the ~45 kDa CREB phosphorylated at Ser133 in the first lane (-). Phosphospecificity is shown in the second lane (+) where immunolabeling is completely eliminated by lysate treatment with lambda phosphatase lambda-Ptase, 800 units/1mg protein for 30 min).



Immunohistochemistry-Frozen: CREB [p Ser133] Antibody [NB300-273] - IHC Analysis of pCREB S133 (red) in frozen sections from mouse piriform cortex. Cell nuclei are visualized with DAPI DNA stain (blue). NB300-273 was used at a dilution of 1:1000 and incubated for 48 hours at 4C. No antigen retrieval step was performed.



## Publications

Costa DVS, Shin JH, Goldbeck SM et al. Adenosine receptors differentially mediate enteric glial cell death induced by Clostridioides difficile Toxins A and B Frontiers in immunology 2023-01-16 [PMID: 36726986] (WB, Rat)

Details:

Dilutions: 1:500

Strand E, Hollas H, Sakya SA Et al. Annexin A2 binds the internal ribosomal entry site of c-myc mRNA and regulates its translation RNA biology 2021-08-04 [PMID: 34346292] (WB, Rat)

Wall AM, Corcoran AE, O'Halloran KD, O'Connor JJ. Effects of prolyl-hydroxylase inhibition and chronic intermittent hypoxia on synaptic transmission and plasticity in the rat CA1 and dentate gyrus. Neurobiol Dis. 2013-09-17 [PMID: 24055213] (WB, Rat)

Shaywitz AJ, Greenberg ME. CREB: a stimulus-induced transcription factor activated by a diverse array of extracellular signals. Annu Rev Biochem 68:821-861. [PMID: 10872467]

Karin M, Hunter T. Transcriptional control by protein phosphorylation: signal transmission from the cell surface to the nucleus. Curr Biol 5:747-757. [PMID: 7583121]

Kornhauser JM, Cowan CW, Shaywitz AJ, Dolmetsch RE, Griffith EC, Hu LS, Haddad C, Xia ZG, Greenberg ME. CREB transcriptional activity in neurons is regulated by multiple, calcium-specific phosphorylation events. Neuron 34:221-233. 2002-01-01 [PMID: 11970864]

Silva AJ, Kogan JH, Frankl PW, Kida S. CREB memory. Annu Rev Neurosci 21:127-148. 1998-01-01 [PMID: 9530494]

Montminy M. Transcriptional regulation by cyclic AMP. Annu Rev Biochem 66:807-822. 1997-01-01 [PMID: 9242925]

Johannessen M, Delghandi MP, Moens U. What turns CREB on? . Cell Signal;16(11):1211-27. 2004-11-01 [PMID: 15337521]

Schneider A, Mehmood T, Pannetier S, Hanauer A. Altered ERK/MAPK signaling in the hippocampus of the mrsk2\_KO mouse model of Coffin-Lowry syndrome. J Neurochem. 2011-08-12 [PMID: 21838783] (WB, Mouse)





### **Novus Biologicals USA**

10730 E. Briarwood Avenue  
Centennial, CO 80112  
USA  
Phone: 303.730.1950  
Toll Free: 1.888.506.6887  
Fax: 303.730.1966  
nb-customerservice@bio-techne.com

### **Bio-Techne Canada**

21 Canmotor Ave  
Toronto, ON M8Z 4E6  
Canada  
Phone: 905.827.6400  
Toll Free: 855.668.8722  
Fax: 905.827.6402  
canada.inquires@bio-techne.com

### **Bio-Techne Ltd**

19 Barton Lane  
Abingdon Science Park  
Abingdon, OX14 3NB, United Kingdom  
Phone: (44) (0) 1235 529449  
Free Phone: 0800 37 34 15  
Fax: (44) (0) 1235 533420  
info.EMEA@bio-techne.com

### **General Contact Information**

www.novusbio.com  
Technical Support: nb-technical@bio-techne.com  
Orders: nb-customerservice@bio-techne.com  
General: novus@novusbio.com

### **Products Related to NB300-273**

---

HAF008	Goat anti-Rabbit IgG Secondary Antibody [HRP]
NB7160	Goat anti-Rabbit IgG (H+L) Secondary Antibody [HRP]
NBP2-24891	Rabbit IgG Isotype Control
H00001385-P01-10ug	Recombinant Human CREB GST (N-Term) Protein

---

### **Limitations**

This product is for research use only and is not approved for use in humans or in clinical diagnosis. Primary Antibodies are guaranteed for 1 year from date of receipt.

For more information on our 100% guarantee, please visit [www.novusbio.com/guarantee](http://www.novusbio.com/guarantee)

Earn gift cards/discounts by submitting a review: [www.novusbio.com/reviews/submit/NB300-273](http://www.novusbio.com/reviews/submit/NB300-273)

Earn gift cards/discounts by submitting a publication using this product:  
[www.novusbio.com/publications](http://www.novusbio.com/publications)

