

Product Datasheet

SLC6A3/DAT1 Antibody - Azide Free NB300-255

Unit Size: 0.1 ml

Store at -20C. Avoid freeze-thaw cycles.

www.novusbio.com



technical@novusbio.com

Protocols, Publications, Related Products, Reviews, Research Tools and Images at:
www.novusbio.com/NB300-255

Updated 9/9/2025 v.20.1

Earn rewards for product
reviews and publications.

Submit a publication at www.novusbio.com/publications

Submit a review at www.novusbio.com/reviews/destination/NB300-255

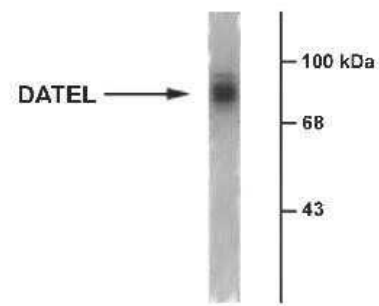


NB300-255**SLC6A3/DAT1 Antibody - Azide Free**

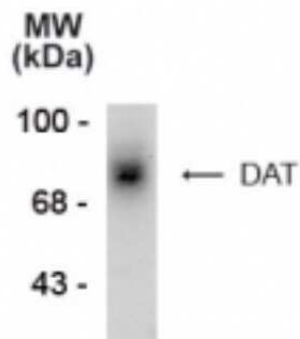
Product Information	
Unit Size	0.1 ml
Concentration	Please see the vial label for concentration. If unlisted please contact technical services.
Storage	Store at -20C. Avoid freeze-thaw cycles.
Clonality	Polyclonal
Preservative	No Preservative
Isotype	IgG
Purity	Antigen Affinity-purified
Buffer	10mM HEPES (pH 7.5), 0.15M NaCl, 0.1 mg/ml BSA and 50% Glycerol
Target Molecular Weight	80 kDa
Product Description	
Description	Novus Biologicals Rabbit SLC6A3/DAT1 Antibody - Azide Free (NB300-255) is a polyclonal antibody validated for use in IHC and WB. All Novus Biologicals antibodies are covered by our 100% guarantee.
Host	Rabbit
Gene ID	6531
Gene Symbol	SLC6A3
Species	Human, Primate
Reactivity Notes	The antibody has been tested in Western blots of SDS-solubilized human striatal samples and in IHC applications with formaldehyde-fixed human and monkey brain sections.
Specificity/Sensitivity	Specific for endogenous levels of the ~80 kDa SLC6A3/DAT1 protein. Diffuse band may be observed between ~70-85 kDa due to variable glycosylation.
Immunogen	Synthetic peptide corresponding to amino acid residues from the extracellular loop 2 region conjugated to KLH. Accession # Q01959
Product Application Details	
Applications	Western Blot, Immunohistochemistry, Immunohistochemistry-Frozen
Recommended Dilutions	Western Blot 1:1000, Immunohistochemistry 1:10-1:500, Immunohistochemistry-Frozen 1:1000

Images

Western Blot: DAT1 Antibody [NB300-255] - Detection of DAT protein in human caudate sample using NB 300-255.



Western Blot: DAT1 Antibody [NB300-255] - Western blot analysis of DAT1 in SDS-solubilized human caudate using NB300-255 at 1:1000.





Novus Biologicals USA

10730 E. Briarwood Avenue
Centennial, CO 80112
USA
Phone: 303.730.1950
Toll Free: 1.888.506.6887
Fax: 303.730.1966
nb-customerservice@bio-techne.com

Bio-Techne Canada

21 Canmotor Ave
Toronto, ON M8Z 4E6
Canada
Phone: 905.827.6400
Toll Free: 855.668.8722
Fax: 905.827.6402
canada.inquires@bio-techne.com

Bio-Techne Ltd

19 Barton Lane
Abingdon Science Park
Abingdon, OX14 3NB, United Kingdom
Phone: (44) (0) 1235 529449
Free Phone: 0800 37 34 15
Fax: (44) (0) 1235 533420
info.EMEA@bio-techne.com

General Contact Information

www.novusbio.com
Technical Support: nb-technical@bio-techne.com
Orders: nb-customerservice@bio-techne.com
General: novus@novusbio.com

Products Related to NB300-255

NBP2-33376H	Blue Marker Antibody (6F4-F6) [HRP]
HAF008	Goat anti-Rabbit IgG Secondary Antibody [HRP]
NB7160	Goat anti-Rabbit IgG (H+L) Secondary Antibody [HRP]
NBP2-24891	Rabbit IgG Isotype Control

Limitations

This product is for research use only and is not approved for use in humans or in clinical diagnosis. Primary Antibodies are guaranteed for 1 year from date of receipt.

For more information on our 100% guarantee, please visit www.novusbio.com/guarantee

Earn gift cards/discounts by submitting a review: www.novusbio.com/reviews/submit/NB300-255

Earn gift cards/discounts by submitting a publication using this product:
www.novusbio.com/publications

