

Product Datasheet

Humanin Antibody - BSA Free NB300-245

Unit Size: 0.1 ml

Store at 4C short term. Aliquot and store at -20C long term. Avoid freeze-thaw cycles.

www.novusbio.com



technical@novusbio.com

Protocols, Publications, Related Products, Reviews, Research Tools and Images at:
www.novusbio.com/NB300-245

Updated 9/9/2025 v.20.1

Earn rewards for product
reviews and publications.

Submit a publication at www.novusbio.com/publications

Submit a review at www.novusbio.com/reviews/destination/NB300-245



NB300-245

Humanin Antibody - BSA Free

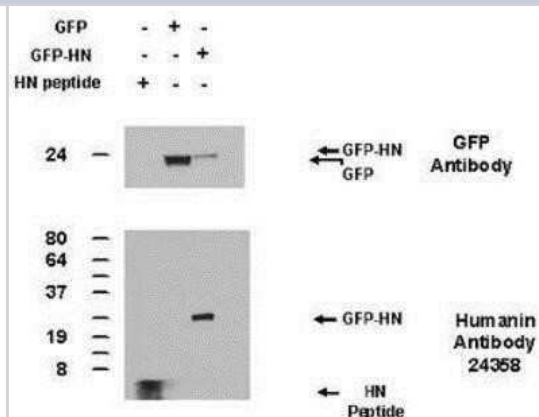
Product Information	
Unit Size	0.1 ml
Concentration	1 mg/ml
Storage	Store at 4C short term. Aliquot and store at -20C long term. Avoid freeze-thaw cycles.
Clonality	Polyclonal
Preservative	0.02% Sodium Azide
Isotype	IgG
Purity	Immunogen affinity purified
Buffer	PBS

Product Description	
Description	Novus Biologicals Rabbit Humanin Antibody - BSA Free (NB300-245) is a polyclonal antibody validated for use in WB. All Novus Biologicals antibodies are covered by our 100% guarantee.
Host	Rabbit
Gene ID	100462977
Gene Symbol	MTRNR2L1
Species	Human
Immunogen	Residues 9-24 (LLLLTSEIDLVPKRRA) of the human Humanin protein.

Product Application Details	
Applications	Western Blot
Recommended Dilutions	Western Blot 1:500
Application Notes	This antibody may be used for Western blot. No other assays have been tested. Suggested working dilutions: The investigator should determine the optimal working dilution for a specific application.

Images

Western Blot: Humanin Antibody [NB300-245] - 100ng of synthetic Humanin peptide and from 50 ug of total lysates of 293 T cells transfected with plasmids encoding GFPc1 or GFP-Humanin Conditions for the Western Blot: Lysis buffer: (50 mM Tris-HCl, pH 7.4, 150 mM NaCl, 20 mM EDTA, 50 mM NaF, 0.5% NP-40, 0.1 mM Na3VO4, 20 ug ml-1 leupeptin, 20 ug ml-1 aprotinin, 1 mM dithiothreitol and 1 mM phenylmethyl sulphonyl fluoride (PMSF)). Blocking buffer: (TRiS/Sodium chloride/buffer pH7.6) with 0.1% Tween-20, 5% skim Milk and 2% BSA). Humanin primary antibody(dilution 1/1000) and GFP antibody (dilution 1/2000) were incubated ON at 4 degrees C. Secondary rabbit HRP antibody was incubated during 1 hour at RT following by ECL detection.





Novus Biologicals USA

10730 E. Briarwood Avenue
Centennial, CO 80112
USA
Phone: 303.730.1950
Toll Free: 1.888.506.6887
Fax: 303.730.1966
nb-customerservice@bio-techne.com

Bio-Techne Canada

21 Canmotor Ave
Toronto, ON M8Z 4E6
Canada
Phone: 905.827.6400
Toll Free: 855.668.8722
Fax: 905.827.6402
canada.inquires@bio-techne.com

Bio-Techne Ltd

19 Barton Lane
Abingdon Science Park
Abingdon, OX14 3NB, United Kingdom
Phone: (44) (0) 1235 529449
Free Phone: 0800 37 34 15
Fax: (44) (0) 1235 533420
info.EMEA@bio-techne.com

General Contact Information

www.novusbio.com
Technical Support: nb-technical@bio-techne.com
Orders: nb-customerservice@bio-techne.com
General: novus@novusbio.com

Products Related to NB300-245

NBP2-33376H	Blue Marker Antibody (6F4-F6) [HRP]
HAF008	Goat anti-Rabbit IgG Secondary Antibody [HRP]
NB7160	Goat anti-Rabbit IgG (H+L) Secondary Antibody [HRP]
NBP2-24891	Rabbit IgG Isotype Control

Limitations

This product is for research use only and is not approved for use in humans or in clinical diagnosis. Primary Antibodies are guaranteed for 1 year from date of receipt.

For more information on our 100% guarantee, please visit www.novusbio.com/guarantee

Earn gift cards/discounts by submitting a review: www.novusbio.com/reviews/submit/NB300-245

Earn gift cards/discounts by submitting a publication using this product:
www.novusbio.com/publications

