

# Product Datasheet

## SCP1 Antibody - BSA Free NB300-228

Unit Size: 0.1 ml

Store at 4C. Do not freeze.

[www.novusbio.com](http://www.novusbio.com)



[technical@novusbio.com](mailto:technical@novusbio.com)

**Publications: 13**

Protocols, Publications, Related Products, Reviews, Research Tools and Images at:  
[www.novusbio.com/NB300-228](http://www.novusbio.com/NB300-228)

Updated 9/9/2025 v.20.1

**Earn rewards for product  
reviews and publications.**

Submit a publication at [www.novusbio.com/publications](http://www.novusbio.com/publications)

Submit a review at [www.novusbio.com/reviews/destination/NB300-228](http://www.novusbio.com/reviews/destination/NB300-228)



**NB300-228**

SCP1 Antibody - BSA Free

Product Information	
Unit Size	0.1 ml
Concentration	1 mg/ml
Storage	Store at 4C. Do not freeze.
Clonality	Polyclonal
Preservative	0.1% Sodium Azide
Isotype	IgG
Purity	Immunogen affinity purified
Buffer	Tris-Citrate/Phosphate (pH 7.0 - 8.0)

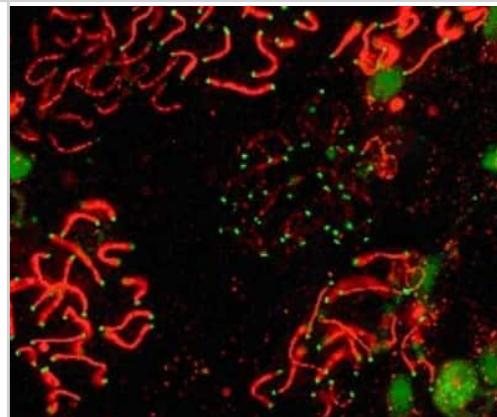
Product Description	
Description	Novus Biologicals Rabbit SCP1 Antibody - BSA Free (NB300-228) is a polyclonal antibody validated for use in IHC, WB, ICC/IF and Simple Western. Anti-SCP1 Antibody: Cited in 13 publications. All Novus Biologicals antibodies are covered by our 100% guarantee.
Host	Rabbit
Gene ID	6847
Gene Symbol	SYCP1
Species	Human, Mouse, Rat, Primate
Immunogen	A C-terminal synthetic peptide made to the human SCP1 protein sequence. [UniProt# Q15431]

Product Application Details	
Applications	Western Blot, Simple Western, Immunohistochemistry-Paraffin, Immunoblotting, Immunocytochemistry/ Immunofluorescence, Immunohistochemistry
Recommended Dilutions	Western Blot reported in scientific literature (PMID 23843895), Simple Western 1:200, Immunohistochemistry, Immunocytochemistry/ Immunofluorescence 1:300-1:750, Immunohistochemistry-Paraffin reported in scientific literature (PMID 26858254), Immunoblotting reported in scientific literature (PMID 27431324)
Application Notes	<p>This SCP1 antibody does not appear to work in Immunohistochemistry on paraffin-embedded sections. *The investigator should determine the optimal working dilution for a specific application.</p> <p>In Simple Western only 10 - 15 uL of the recommended dilution is used per data point. See <a href="#">Simple Western Antibody Database</a> for Simple Western validation: Tested in Human Testis and Mouse Testis lysate 0.5 mg/mL, separated by Size, antibody dilution of 1:200. Separated by Size-Wes, Sally Sue/Peggy Sue.</p>



## Images

Immunocytochemistry/Immunofluorescence: SCP1 Antibody [NB300-228] - SCP1 labeled in mouse pachytene preparation (red), using NB 300-228. CDK2 staining, near telomeres, is also present (green).



Simple Western: SCP1 Antibody [NB300-228] - Lane view shows a specific band for SCP1 in 0.5 mg/ml of Human Testis (left) and Mouse Testis (right) lysate. This experiment was performed under reducing conditions using the 12-230 kDa separation system. \* Non-specific interaction with the 230 kDa Simple Western standard may be seen with this antibody



## Publications

Miao Du, Shikun Chen, Yang Chen, Xinxu Yuan, Huansheng Dong Testicular fat deposition attenuates reproductive performance via decreased follicle-stimulating hormone level and sperm meiosis and testosterone synthesis in mouse *Animal Bioscience* 2024-01-01 [PMID: 37641828]

Mizuta K, Katou Y, Nakakita B et al. Ex vivo reconstitution of fetal oocyte development in humans and cynomolgus monkeys *The EMBO journal* 2022-08-01 [PMID: 35912849]

Chien JC, Tabet E, Pinkham K et al. A multiplexed bioluminescent reporter for sensitive and non-invasive tracking of DNA double strand break repair dynamics in vitro and in vivo *Nucleic Acids Res* 2020-08-16 [PMID: 32797168]

Liu C, Liu H, Zhang H et al. Paternal USP26 mutations raise Klinefelter syndrome risk in the offspring of mice and humans *The EMBO journal* 2021-05-12 [PMID: 33978233]

Wei H, Khawar MB, Tang W et al. Sirt6 is required for spermatogenesis in mice *Aging (Albany NY)* 2020-09-11 [PMID: 32915773]

Wang L, Tu Z, et al. Dual roles of TRF1 in tethering telomeres to the nuclear envelope and protecting them from fusion during meiosis. *Cell Death Differ* 2018-06-01 [PMID: 29311622] (ICC/IF, Mouse)

Xu Z, Song Z, Li G et al. H2B ubiquitination regulates meiotic recombination by promoting chromatin relaxation. *Nucleic Acids Res* 2016-07-18 [PMID: 27431324]

Liu YJ, Liu C, Chang Z et al. Degradation of the Separase-cleaved Rec8, a Meiotic Cohesin Subunit, by the N-end Rule Pathway *J. Biol. Chem.* 2016-02-08 [PMID: 26858254] (IHC-P, Mouse)

Zheng Y, Liu Y, Jin H et al. Scavenger Receptor B1 is a Potential Biomarker of Human Nasopharyngeal Carcinoma and Its Growth is Inhibited by HDL-mimetic Nanoparticles. *Theranostics* 2013-06-25 [PMID: 23843895] (WB, Human)

Yamauchi K, Hasegawa K, Chuma S et al. In vitro germ cell differentiation from cynomolgus monkey embryonic stem cells. *PLoS One* 2009-01-01 [PMID: 19399191] (ICC/IF, Primate)

Bisig CG, Guiraldelli MF, Kouznetsova A et al. Synaptonemal Complex Components Persist at Centromeres and Are Required for Homologous Centromere Pairing in Mouse Spermatocytes *PLoS Genet* 2012-06-01 [PMID: 22761579] (ICC/IF, Mouse)

Takada Y, Naruse C, Costa Y et al. HP1 $\gamma$  links histone methylation marks to meiotic synapsis in mice. *Development*;138(19):4207-4217. 2011-10-01 [PMID: 21896631]

More publications at <http://www.novusbio.com/NB300-228>

## Procedures

### Immunocytochemistry/Immunofluorescence protocol for SCP1 Antibody (NB300-228)

SCP1 Antibody:

Immunofluorescence Procedure

1. Freshly prepared slides are soaked in 1X ADB for 75 minutes.
2. Primary antibodies are added concurrently (SCP1 and CDK2).
3. The primary antibodies are incubated overnight in a humid chamber (37 degrees Celsius).
4. The slides are washed for 40 minutes in 1X ADB.
5. The slides are detected with the appropriate secondary antibodies (RDAR for SCP1 and FDAM for CDK2).
6. The slides are incubated for 4 hours in a humid chamber (37 degrees Celsius).
7. The slides are washed for 20 minutes in 1X ADB, followed by 3 washes, 10 minutes each, in 1X PBS.
8. The slides are counterstained with DAPI.
9. Images are captured after allowing the slides to remain in the dark overnight at RT.





### Novus Biologicals USA

10730 E. Briarwood Avenue  
Centennial, CO 80112  
USA  
Phone: 303.730.1950  
Toll Free: 1.888.506.6887  
Fax: 303.730.1966  
nb-customerservice@bio-techne.com

### Bio-Techne Canada

21 Canmotor Ave  
Toronto, ON M8Z 4E6  
Canada  
Phone: 905.827.6400  
Toll Free: 855.668.8722  
Fax: 905.827.6402  
canada.inquires@bio-techne.com

### Bio-Techne Ltd

19 Barton Lane  
Abingdon Science Park  
Abingdon, OX14 3NB, United Kingdom  
Phone: (44) (0) 1235 529449  
Free Phone: 0800 37 34 15  
Fax: (44) (0) 1235 533420  
info.EMEA@bio-techne.com

### General Contact Information

www.novusbio.com  
Technical Support: nb-technical@bio-techne.com  
Orders: nb-customerservice@bio-techne.com  
General: novus@novusbio.com

### Products Related to NB300-228

---

NB300-228PEP	SCP1 Antibody Blocking Peptide
NBP2-33376H	Blue Marker Antibody (6F4-F6) [HRP]
HAF008	Goat anti-Rabbit IgG Secondary Antibody [HRP]
NB7160	Goat anti-Rabbit IgG (H+L) Secondary Antibody [HRP]
NBP2-24891	Rabbit IgG Isotype Control

---

### Limitations

This product is for research use only and is not approved for use in humans or in clinical diagnosis. Primary Antibodies are guaranteed for 1 year from date of receipt.

For more information on our 100% guarantee, please visit [www.novusbio.com/guarantee](http://www.novusbio.com/guarantee)

Earn gift cards/discounts by submitting a review: [www.novusbio.com/reviews/submit/NB300-228](http://www.novusbio.com/reviews/submit/NB300-228)

Earn gift cards/discounts by submitting a publication using this product:  
[www.novusbio.com/publications](http://www.novusbio.com/publications)

