

Product Datasheet

IGSF4A/SynCAM1/CADM1 Antibody - BSA Free NB300-186

Unit Size: 0.1 ml

Store at 4C short term. Aliquot and store at -20C long term. Avoid freeze-thaw cycles.

www.novusbio.com



technical@novusbio.com

Publications: 2

Protocols, Publications, Related Products, Reviews, Research Tools and Images at:
www.novusbio.com/NB300-186

Updated 9/9/2025 v.20.1

Earn rewards for product
reviews and publications.

Submit a publication at www.novusbio.com/publications

Submit a review at www.novusbio.com/reviews/destination/NB300-186



NB300-186**IGSF4A/SynCAM1/CADM1 Antibody - BSA Free**

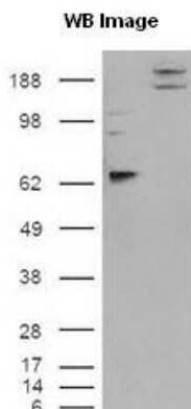
Product Information	
Unit Size	0.1 ml
Concentration	This product is unpurified. The exact concentration of antibody is not quantifiable.
Storage	Store at 4C short term. Aliquot and store at -20C long term. Avoid freeze-thaw cycles.
Clonality	Polyclonal
Preservative	0.02% Sodium Azide
Isotype	IgG
Purity	Unpurified
Buffer	Whole antisera

Product Description	
Description	Novus Biologicals Rabbit IGSF4A/SynCAM1/CADM1 Antibody - BSA Free (NB300-186) is a polyclonal antibody validated for use in WB, ICC/IF and Simple Western. Anti-IGSF4A/SynCAM1/CADM1 Antibody: Cited in 2 publications. All Novus Biologicals antibodies are covered by our 100% guarantee.
Host	Rabbit
Gene ID	23705
Gene Symbol	CADM1
Species	Human, Rat
Immunogen	A synthetic peptide corresponding to the C-terminal region of rat SynCAM/CADM1.

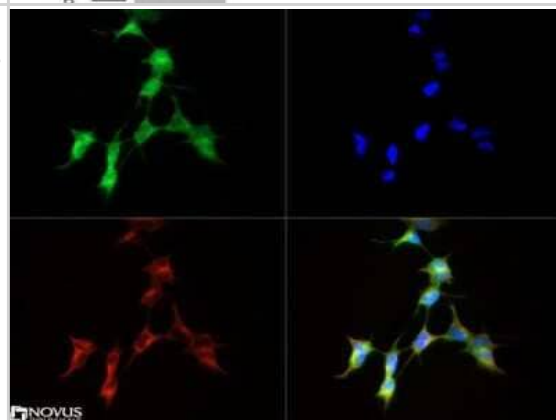
Product Application Details	
Applications	Western Blot, Simple Western, Immunocytochemistry/ Immunofluorescence
Recommended Dilutions	Western Blot 1:1000, Simple Western 1:1000, Immunocytochemistry/ Immunofluorescence 1:2000
Application Notes	<p>This SynCAM/CADM1 antibody can be used for Western blot and Immunocytochemistry/Immunofluorescence. Brain fractions give banding patterns of a core glycosylation population around 50kDa and a slightly higher glycosylated population around 65 kDa. Heterologous cell lysates give a single band around 107kDa. In ICC/IF, membrane staining was observed in SH-SY-5Y cells.</p> <p>In Simple Western only 10 - 15 uL of the recommended dilution is used per data point. See Simple Western Antibody Database for Simple Western validation: Tested in Human Brain lysate 0.5 mg/mL, separated by Size, antibody dilution of 1:1000, apparent MW was 62 kDa. Separated by Size-Wes, Sally Sue/Peggy Sue.</p>

Images

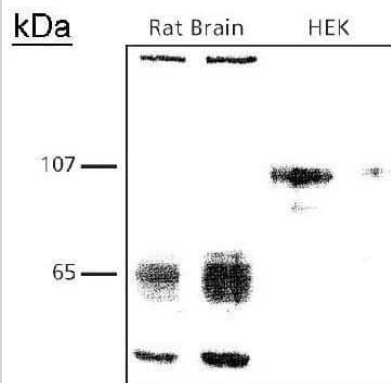
Western Blot: IGSF4A/SynCAM1/CADM1 Antibody [NB300-186] - Cells were transfected with the pCMV6-ENTRY control or pCMV6-ENTRY CADM1 cDNA for 48 hrs and lysed. Equivalent amounts of cell lysates (5 ug per lane) were separated by SDS-PAGE and immunoblotted with anti-SynCAM/CADM1.



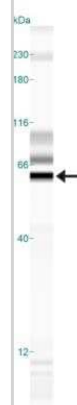
Immunocytochemistry/Immunofluorescence: IGSF4A/SynCAM1/CADM1 Antibody [NB300-186] - SynCAM/CADM1 antibody was tested in SH-SY-5Y cells with Dylight 488 (green). Nuclei and alpha-tubulin were counterstained with DAPI (blue) and Dylight 550 (red).



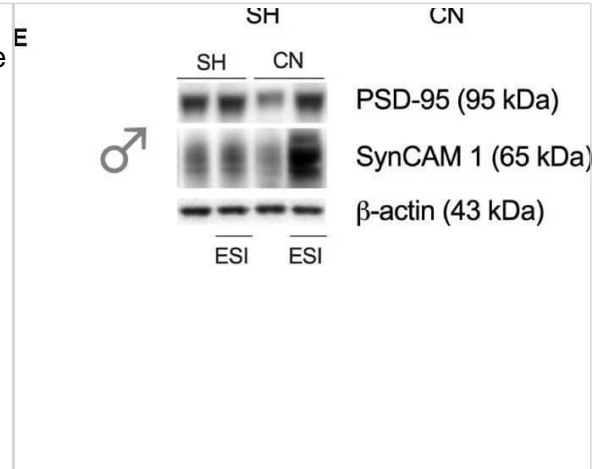
Western Blot: IGSF4A/SynCAM1/CADM1 Antibody [NB300-186] - Rat brain and HEK cell lysates showing different glycosylation patterns. Brain fractions give banding patterns of a core glycosylation population around 50kDa and a slightly higher glycosylated population around 65 kDa. The heterologous HEK cell lysates give a single, fully glycosylated, band around 107kDa.



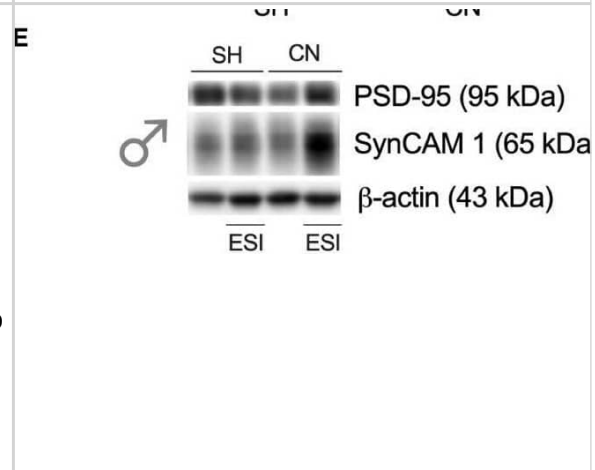
Simple Western: IGSF4A/SynCAM1/CADM1 Antibody [NB300-186] - Simple Western lane view shows a specific band for SynCAM in 0.5 mg/ml of Human Brain lysate. This experiment was performed under reducing conditions using the 12-230 kDa separation system.



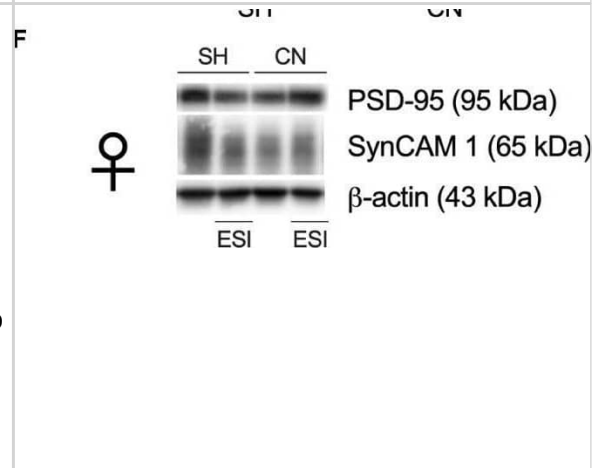
Effect of SH, CN and ESI protocol on synaptic structural markers expression in the crude membrane fraction of the mPFC of PND-75 male (top) and female (bottom) rats. Protein levels of PSD95 (A), SynCAM 1 (B) in male rats and PSD95 (C), SynCAM 1 (D) in female rats are expressed as percentages of SH-CTRL and represent the mean +/- S.E.M. of six rats per group (SynCAM: 1 outlier in CN-CTRL males). Representative immunoblots (bottom) are shown for each protein in the respective panels (E, F). * $p < 0.05$ vs. SH-CTRL, \$ $p < 0.05$, \$\$\$ $p < 0.01$, \$\$\$ $p < 0.001$ vs CN+CTRL (Two-way ANOVA followed by Tukey's multiple comparisons test). SH, Standard Housing; CN, Communal Nesting; CTRL, controls no ESI; ESI, Early Social Isolation. Image collected and cropped by CiteAb from the following open publication (<https://pubmed.ncbi.nlm.nih.gov/38835543>), licensed under a CC-BY license. Not internally tested by Novus Biologicals.



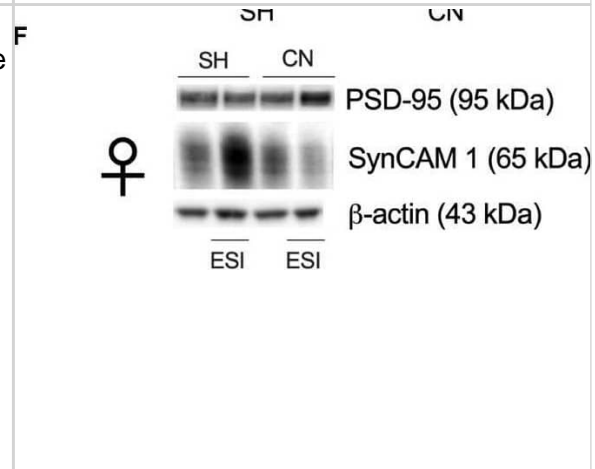
Effect of SH, CN and ESI protocol on synaptic structural markers expression in the crude membrane fraction of the mPFC of PND35 male (top) and female (middle) rats. Protein levels of PSD95 (A), SynCAM 1 (B) in male rats and PSD95 (C), SynCAM 1 (D) in female rats are expressed as percentages of SH-CTRL and represent the mean +/- S.E.M. of six rats per group. Representative immunoblots (bottom) are shown for each protein in the respective panels (E, F). * $p < 0.05$, ** $p < 0.01$, *** $p < 0.001$ vs. SH-CTRL, \$ $p < 0.05$, \$\$\$ $p < 0.01$, \$\$\$ $p < 0.001$ vs CN+CTRL (Two-way ANOVA followed by Tukey's multiple comparisons test). SH, Standard Housing; CN, Communal Nesting; CTRL, controls no ESI; ESI, Early Social Isolation. Image collected and cropped by CiteAb from the following open publication (<https://pubmed.ncbi.nlm.nih.gov/38835543>), licensed under a CC-BY license. Not internally tested by Novus Biologicals.



Effect of SH, CN and ESI protocol on synaptic structural markers expression in the crude membrane fraction of the mPFC of PND35 male (top) and female (middle) rats. Protein levels of PSD95 (A), SynCAM 1 (B) in male rats and PSD95 (C), SynCAM 1 (D) in female rats are expressed as percentages of SH-CTRL and represent the mean +/- S.E.M. of six rats per group. Representative immunoblots (bottom) are shown for each protein in the respective panels (E, F). * $p < 0.05$, ** $p < 0.01$, *** $p < 0.001$ vs. SH-CTRL, \$ $p < 0.05$, \$\$\$ $p < 0.01$, \$\$\$ $p < 0.001$ vs CN+CTRL (Two-way ANOVA followed by Tukey's multiple comparisons test). SH, Standard Housing; CN, Communal Nesting; CTRL, controls no ESI; ESI, Early Social Isolation. Image collected and cropped by CiteAb from the following open publication (<https://pubmed.ncbi.nlm.nih.gov/38835543>), licensed under a CC-BY license. Not internally tested by Novus Biologicals.



Effect of SH, CN and ESI protocol on synaptic structural markers expression in the crude membrane fraction of the mPFC of PND-75 male (top) and female (bottom) rats. Protein levels of PSD95 (A), SynCAM 1 (B) in male rats and PSD95 (C), SynCAM 1 (D) in female rats are expressed as percentages of SH-CTRL and represent the mean +/- S.E.M. of six rats per group (SynCAM: 1 outlier in CN-CTRL males). Representative immunoblots (bottom) are shown for each protein in the respective panels (E, F). * $p < 0.05$ vs. SH-CTRL, \$ $p < 0.05$, \$\$\$ $p < 0.01$, \$\$\$ $p < 0.001$ vs CN+CTRL (Two-way ANOVA followed by Tukey's multiple comparisons test). SH, Standard Housing; CN, Communal Nesting; CTRL, controls no ESI; ESI, Early Social Isolation. Image collected and cropped by CiteAb from the following open publication (<https://pubmed.ncbi.nlm.nih.gov/38835543>), licensed under a CC-BY license. Not internally tested by Novus Biologicals.



Publications

Mottarlini F, Rizzi B, Targa G, Buzzelli V et Al. Communal nesting shapes the sex-dependent glutamatergic response to early life stress in the rat prefrontal cortex *Front Psychiatry* 2024-06-05 [PMID: 38835543]

Tarbe, N et al. SMAGP, a new small trans-membrane glycoprotein altered in cancer. *Oncogene*;23(19):3395-403. 2004-04-22 [PMID: 15021913] (WB, Human, Rat)





Novus Biologicals USA

10730 E. Briarwood Avenue
Centennial, CO 80112
USA
Phone: 303.730.1950
Toll Free: 1.888.506.6887
Fax: 303.730.1966
nb-customerservice@bio-techne.com

Bio-Techne Canada

21 Canmotor Ave
Toronto, ON M8Z 4E6
Canada
Phone: 905.827.6400
Toll Free: 855.668.8722
Fax: 905.827.6402
canada.inquires@bio-techne.com

Bio-Techne Ltd

19 Barton Lane
Abingdon Science Park
Abingdon, OX14 3NB, United Kingdom
Phone: (44) (0) 1235 529449
Free Phone: 0800 37 34 15
Fax: (44) (0) 1235 533420
info.EMEA@bio-techne.com

General Contact Information

www.novusbio.com
Technical Support: nb-technical@bio-techne.com
Orders: nb-customerservice@bio-techne.com
General: novus@novusbio.com

Products Related to NB300-186

NB300-186PEP	IGSF4A/SynCAM1/CADM1 Antibody Blocking Peptide
NBP2-33376H	Blue Marker Antibody (6F4-F6) [HRP]
HAF008	Goat anti-Rabbit IgG Secondary Antibody [HRP]
NB7160	Goat anti-Rabbit IgG (H+L) Secondary Antibody [HRP]
NBP2-24891	Rabbit IgG Isotype Control

Limitations

This product is for research use only and is not approved for use in humans or in clinical diagnosis. Primary Antibodies are guaranteed for 1 year from date of receipt.

For more information on our 100% guarantee, please visit www.novusbio.com/guarantee

Earn gift cards/discounts by submitting a review: www.novusbio.com/reviews/submit/NB300-186

Earn gift cards/discounts by submitting a publication using this product:
www.novusbio.com/publications

