

Product Datasheet

Somatostatin R2/SSTR2 Antibody - BSA Free NB300-157

Unit Size: 0.1 ml

Aliquot and store at -20C or -80C. Avoid freeze-thaw cycles.

www.novusbio.com



technical@novusbio.com

Publications: 10

Protocols, Publications, Related Products, Reviews, Research Tools and Images at:
www.novusbio.com/NB300-157

Updated 9/9/2025 v.20.1

Earn rewards for product
reviews and publications.

Submit a publication at www.novusbio.com/publications

Submit a review at www.novusbio.com/reviews/destination/NB300-157



NB300-157**Somatostatin R2/SSTR2 Antibody - BSA Free**

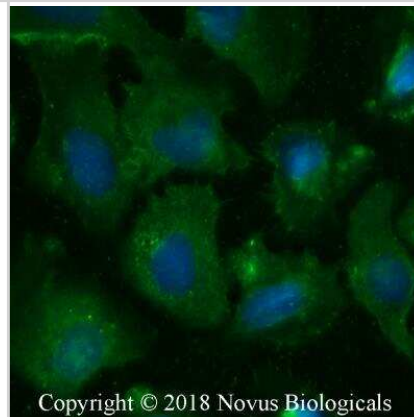
Product Information	
Unit Size	0.1 ml
Concentration	This product is unpurified. The exact concentration of antibody is not quantifiable.
Storage	Aliquot and store at -20C or -80C. Avoid freeze-thaw cycles.
Clonality	Polyclonal
Preservative	0.05% Sodium Azide
Isotype	IgG
Purity	Unpurified
Buffer	Whole antisera

Product Description	
Description	Novus Biologicals Rabbit Somatostatin R2/SSTR2 Antibody - BSA Free (NB300-157) is a polyclonal antibody validated for use in IHC, WB, Flow, ICC/IF and IP. Anti-Somatostatin R2/SSTR2 Antibody: Cited in 10 publications. All Novus Biologicals antibodies are covered by our 100% guarantee.
Host	Rabbit
Gene ID	6752
Gene Symbol	SSTR2
Species	Human, Mouse, Rat, Porcine
Reactivity Notes	Porcine reactivity reported in scientific literature (PMID:33002813)
Immunogen	A synthetic peptide made to the C-terminus of rat Somatostatin Receptor 2 [UniProt# P30680]
Notes	Licensed to Novus Biologicals LLC under U.S. Patent No 5,998,154.

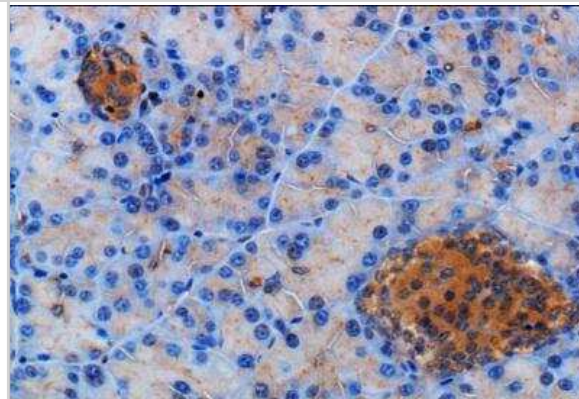
Product Application Details	
Applications	Western Blot, Immunohistochemistry-Paraffin, Electron Microscopy, Flow Cytometry, Immunocytochemistry/ Immunofluorescence, Immunohistochemistry, Immunohistochemistry-Frozen, Immunoprecipitation
Recommended Dilutions	Western Blot 1:100 - 1:1000, Flow Cytometry, Immunohistochemistry 1:100, Immunocytochemistry/ Immunofluorescence 1:100 - 1:250, Immunoprecipitation 1:10 - 1:500, Immunohistochemistry-Paraffin 1:100, Immunohistochemistry-Frozen 1:100, Electron Microscopy

Images

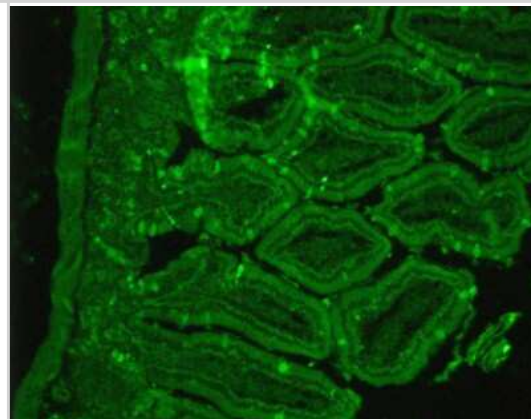
Immunocytochemistry/Immunofluorescence: Somatostatin R2/SSTR2 Antibody [NB300-157] - U2OS cells were fixed for 10 minutes using 10% formalin and then permeabilized for 5 minutes using 1X PBS + 0.05% Triton X-100. The cells were incubated with antibody at 1:50 overnight at 4C and detected with an anti-rabbit Dylight 488 (Green) at 1:500. Nuclei were counterstained with DAPI (Blue). Cells were imaged using a 40X objective.



Immunohistochemistry-Paraffin: Somatostatin R2/SSTR2 Antibody [NB300-157] - Staining of Somatostatin Receptor 2 in mouse pancreas using DAB with hematoxylin counterstain.



Immunohistochemistry-Paraffin: Somatostatin R2/SSTR2 Antibody [NB300-157] - Staining of paraffin embedded rat pancreas tissue.



Publications

- Mandriani B, Pellè E, Mannavola F et al. Development of anti-somatostatin receptors CAR T cells for treatment of neuroendocrine tumors *Journal for immunotherapy of cancer* 2022-06-01 [PMID: 35764366] (FLOW)
- Yamashita S, Morine Y, Imura S et al. A new pathological classification of intrahepatic cholangiocarcinoma according to protein expression of SSTR2 and Bcl2 *World journal of surgical oncology* 2021-05-07 [PMID: 33962620] (IF/IHC, Human)
- Dearling JLJ, van Dam EM, Harris MJ, Packard AB Detection and therapy of neuroblastoma minimal residual disease using [64/67Cu]Cu-SARTATE in a preclinical model of hepatic metastases *EJNMMI research* 2021-02-25 [PMID: 33630166] (IF/IHC, Human)
- Jana B, Calka J, Czajkowska M The role of somatostatin and its receptors (sstr2, sstr5) in the contractility of gilt inflamed uterus *Research in veterinary science* 2020-09-19 [PMID: 33002813] (WB, Porcine)
- Wang Z, Ma W, Wang J et al. Imaging and therapy of hSSTR2-transfected tumors using radiolabeled somatostatin analogs. *Tumour Biol* 2013-04-19 [PMID: 23605323] (FLOW)
- Reubi JC, Laissue JA, Waser B et al. Immunohistochemical detection of somatostatin sst2a receptors in the lymphatic, smooth muscular, and peripheral nervous systems of the human gastrointestinal tract: facts and artifacts. *J Clin Endocrinol Metab*;84(8):2942-50. 1999-08-01 [PMID: 10443702] (IHC-Fr, IHC-P, WB, Human)
- Reubi JC, Kappeler A, Waser B et al. Immunohistochemical localization of somatostatin receptors sst2A in human tumors. *Am J Pathol*;153(1):233-45. 1998-07-01 [PMID: 9665484] (WB, IHC-Fr, IHC-P, Human)
- Gu YZ, Schonbrunn A. Coupling specificity between somatostatin receptor sst2A and G proteins: isolation of the receptor-G protein complex with a receptor antibody. *Mol Endocrinol*;11(5):527-37. 1997-05-01 [PMID: 9139797] (WB, Rat)
- Li F, Ryu BY, Krueger RL et al. Targeted entry via somatostatin receptors using a novel modified retrovirus glycoprotein that delivers genes at levels comparable to wild type viral glycoproteins. *Journal of Virology*. 2011-10-19 [PMID: 22013043]
- Dournaud P, Gu YZ, Schonbrunn A et al. Localization of the somatostatin receptor SST2A in rat brain using a specific anti-peptide antibody. *J Neurosci*;16(14):4468-78. 1996-07-15 [PMID: 8699257] (WB, ICC/IF, Rat)



Procedures

Protocol specific for Somatostatin Receptor 2 Antibody (NB300-157)

Somatostatin R2/SSTR2 Antibody:

Procedure Guide for NB 300-157 Polyclonal Anti-Somatostatin Receptor II

Immunofluorescence Procedure

1. Plate cells on Lab-TekII chamber slides (Nalge Nunc).
2. Grow cells to about 75% confluence.
3. Rinse cells with PBS, at room temperature (RT).
4. Fix in 2% formaldehyde/PBS for 20 minutes at RT.
5. Rinse the cells 3x with TBS (pH 7.2).
6. Block the non-specific sites with 0.5% normal goat serum in TBS + 0.1% Triton X 100 (TBS-TX).
7. Incubate the cells in anti-SSR2 (catalog# NB 300-157), diluted in TBS-TX, overnight at RT.
8. Next day: rinse the cells 3x 5 minutes, in TBS.
9. Incubate the cells for 1 hour at RT in FITC-goat anti-rabbit secondary, diluted in TBS-TX (1:1,000).
10. Rinse 3x with TBS.
11. Mount the cells in Vector Labs mounting media and coverslip.





Novus Biologicals USA

10730 E. Briarwood Avenue
Centennial, CO 80112
USA
Phone: 303.730.1950
Toll Free: 1.888.506.6887
Fax: 303.730.1966
nb-customerservice@bio-techne.com

Bio-Techne Canada

21 Canmotor Ave
Toronto, ON M8Z 4E6
Canada
Phone: 905.827.6400
Toll Free: 855.668.8722
Fax: 905.827.6402
canada.inquires@bio-techne.com

Bio-Techne Ltd

19 Barton Lane
Abingdon Science Park
Abingdon, OX14 3NB, United Kingdom
Phone: (44) (0) 1235 529449
Free Phone: 0800 37 34 15
Fax: (44) (0) 1235 533420
info.EMEA@bio-techne.com

General Contact Information

www.novusbio.com
Technical Support: nb-technical@bio-techne.com
Orders: nb-customerservice@bio-techne.com
General: novus@novusbio.com

Products Related to NB300-157

NB300-157PEP	Somatostatin R2/SSTR2 Antibody Blocking Peptide
NBP2-33376H	Blue Marker Antibody (6F4-F6) [HRP]
HAF008	Goat anti-Rabbit IgG Secondary Antibody [HRP]
NB7160	Goat anti-Rabbit IgG (H+L) Secondary Antibody [HRP]
NBP2-24891	Rabbit IgG Isotype Control

Limitations

This product is for research use only and is not approved for use in humans or in clinical diagnosis. Primary Antibodies are guaranteed for 1 year from date of receipt.

For more information on our 100% guarantee, please visit www.novusbio.com/guarantee

Earn gift cards/discounts by submitting a review: www.novusbio.com/reviews/submit/NB300-157

Earn gift cards/discounts by submitting a publication using this product:
www.novusbio.com/publications

