

Product Datasheet

Somatostatin R1/SSTR1 Antibody - BSA Free NB300-120

Unit Size: 0.1 ml

Aliquot and store at -20C or -80C. Avoid freeze-thaw cycles.

www.novusbio.com



technical@novusbio.com

Protocols, Publications, Related Products, Reviews, Research Tools and Images at:
www.novusbio.com/NB300-120

Updated 9/9/2025 v.20.1

Earn rewards for product
reviews and publications.

Submit a publication at www.novusbio.com/publications

Submit a review at www.novusbio.com/reviews/destination/NB300-120

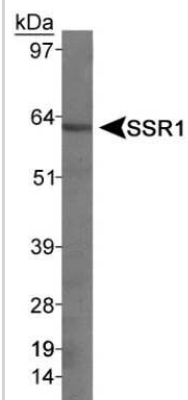


NB300-120**Somatostatin R1/SSTR1 Antibody - BSA Free**

Product Information	
Unit Size	0.1 ml
Concentration	This product is unpurified. The exact concentration of antibody is not quantifiable.
Storage	Aliquot and store at -20C or -80C. Avoid freeze-thaw cycles.
Clonality	Polyclonal
Preservative	0.05% Sodium Azide
Isotype	IgG
Purity	Unpurified
Buffer	Whole antisera
Target Molecular Weight	60 kDa
Product Description	
Description	Novus Biologicals Rabbit Somatostatin R1/SSTR1 Antibody - BSA Free (NB300-120) is a polyclonal antibody validated for use in WB and IP. All Novus Biologicals antibodies are covered by our 100% guarantee.
Host	Rabbit
Gene ID	6751
Gene Symbol	SSTR1
Species	Human, Mouse, Rat
Specificity/Sensitivity	Specific to Somatostatin Receptor I (SSR1) and does not react with Somatostatin Receptor II (SSR2).
Immunogen	A synthetic peptide from the C-terminus of rat Somatostatin Receptor 1, conjugated to cysteine. [UniProt# P28646]
Notes	Licensed to Novus Biologicals LLC under U.S. Patent No 5,998,154.
Product Application Details	
Applications	Western Blot, Immunoprecipitation
Recommended Dilutions	Western Blot 1:1000-1:5000, Immunoprecipitation 1:10-1:500
Application Notes	<p>This Somatostatin Receptor 1 antibody is useful for Immunoprecipitation and Western blot, where a band is seen at 60 kDa representing Somatostatin Receptor 1. This antibody is not suitable for use in Immunocytochemistry/Immunofluorescence.</p> <p>The observed molecular weight of the protein may vary from the listed predicted molecular weight due to post translational modifications, post translation cleavages, relative charges, and other experimental factors.</p>

Images

Western Blot: Somatostatin Receptor 1 Antibody [NB300-120] -
Detection of SSR1 from rat pancreas using NB300-120 (1:1000).





Novus Biologicals USA

10730 E. Briarwood Avenue
Centennial, CO 80112
USA
Phone: 303.730.1950
Toll Free: 1.888.506.6887
Fax: 303.730.1966
nb-customerservice@bio-techne.com

Bio-Techne Canada

21 Canmotor Ave
Toronto, ON M8Z 4E6
Canada
Phone: 905.827.6400
Toll Free: 855.668.8722
Fax: 905.827.6402
canada.inquires@bio-techne.com

Bio-Techne Ltd

19 Barton Lane
Abingdon Science Park
Abingdon, OX14 3NB, United Kingdom
Phone: (44) (0) 1235 529449
Free Phone: 0800 37 34 15
Fax: (44) (0) 1235 533420
info.EMEA@bio-techne.com

General Contact Information

www.novusbio.com
Technical Support: nb-technical@bio-techne.com
Orders: nb-customerservice@bio-techne.com
General: novus@novusbio.com

Products Related to NB300-120

NBP2-33376H	Blue Marker Antibody (6F4-F6) [HRP]
HAF008	Goat anti-Rabbit IgG Secondary Antibody [HRP]
NB7160	Goat anti-Rabbit IgG (H+L) Secondary Antibody [HRP]
NBP2-24891	Rabbit IgG Isotype Control

Limitations

This product is for research use only and is not approved for use in humans or in clinical diagnosis. Primary Antibodies are guaranteed for 1 year from date of receipt.

For more information on our 100% guarantee, please visit www.novusbio.com/guarantee

Earn gift cards/discounts by submitting a review: www.novusbio.com/reviews/submit/NB300-120

Earn gift cards/discounts by submitting a publication using this product:
www.novusbio.com/publications

