

Product Datasheet

Dopamine beta-Hydroxylase Antibody - Azide Free NB300-112

Unit Size: 0.1 ml

Store at -20C. Avoid freeze-thaw cycles.

www.novusbio.com



technical@novusbio.com

Publications: 1

Protocols, Publications, Related Products, Reviews, Research Tools and Images at:
www.novusbio.com/NB300-112

Updated 9/9/2025 v.20.1

Earn rewards for product
reviews and publications.

Submit a publication at www.novusbio.com/publications

Submit a review at www.novusbio.com/reviews/destination/NB300-112

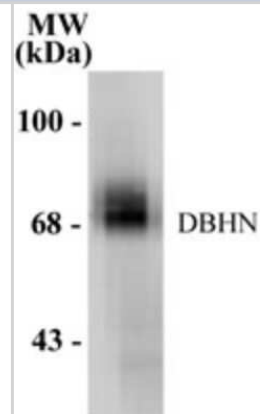


NB300-112**Dopamine beta-Hydroxylase Antibody - Azide Free**

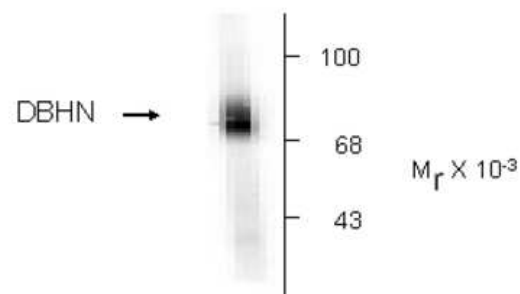
Product Information	
Unit Size	0.1 ml
Concentration	Please see the vial label for concentration. If unlisted please contact technical services.
Storage	Store at -20C. Avoid freeze-thaw cycles.
Clonality	Polyclonal
Preservative	No Preservative
Isotype	IgG
Purity	Antigen Affinity-purified
Buffer	10mM HEPES (pH 7.5), 0.15M NaCl, 0.1 mg/ml BSA and 50% Glycerol
Target Molecular Weight	75 kDa
Product Description	
Description	Novus Biologicals Sheep Dopamine beta-Hydroxylase Antibody - Azide Free (NB300-112) is a polyclonal antibody validated for use in WB. Anti-Dopamine beta-Hydroxylase Antibody: Cited in 1 publication. All Novus Biologicals antibodies are covered by our 100% guarantee.
Host	Sheep
Gene ID	1621
Gene Symbol	DBH
Species	Human, Primate
Reactivity Notes	Tested in Human and Primate.
Specificity/Sensitivity	Specific for endogenous levels of the ~75 kDa Dopamine beta-Hydroxylase protein.
Immunogen	Synthetic peptide corresponding to amino acid residues from the N-terminal region conjugated to KLH. Accession # P09172
Product Application Details	
Applications	Western Blot
Recommended Dilutions	Western Blot 1:1000

Images

Western Blot: Dopamine beta Hydroxylase Antibody [NB300-112] - Western blot of human adrenal medulla. The antibody is specific for the ~75 kDa DBH protein.



Western Blot: Dopamine beta Hydroxylase Antibody [NB300-112] - Human adrenal medulla lysate showing specific immunolabeling of the ~75k DBH protein.



Publications

Li H, Ham A, Ma TC et al. Mitochondrial dysfunction and mitophagy defect triggered by heterozygous GBA mutations Autophagy 2019-01-01 [PMID: 30160596] (WB, Human)



Novus Biologicals USA

10730 E. Briarwood Avenue
Centennial, CO 80112
USA
Phone: 303.730.1950
Toll Free: 1.888.506.6887
Fax: 303.730.1966
nb-customerservice@bio-techne.com

Bio-Techne Canada

21 Canmotor Ave
Toronto, ON M8Z 4E6
Canada
Phone: 905.827.6400
Toll Free: 855.668.8722
Fax: 905.827.6402
canada.inquires@bio-techne.com

Bio-Techne Ltd

19 Barton Lane
Abingdon Science Park
Abingdon, OX14 3NB, United Kingdom
Phone: (44) (0) 1235 529449
Free Phone: 0800 37 34 15
Fax: (44) (0) 1235 533420
info.EMEA@bio-techne.com

General Contact Information

www.novusbio.com
Technical Support: nb-technical@bio-techne.com
Orders: nb-customerservice@bio-techne.com
General: novus@novusbio.com

Products Related to NB300-112

NBL1-09727	Dopamine beta-Hydroxylase Overexpression Lysate
NBP2-33376H	Blue Marker Antibody (6F4-F6) [HRP]
HAF016	Donkey anti-Sheep IgG Secondary Antibody [HRP]
NL010	Donkey anti-Sheep IgG Secondary Antibody [NL557]
NBP1-97055-10mg	Sheep IgG Isotype Control

Limitations

This product is for research use only and is not approved for use in humans or in clinical diagnosis. Primary Antibodies are guaranteed for 1 year from date of receipt.

For more information on our 100% guarantee, please visit www.novusbio.com/guarantee

Earn gift cards/discounts by submitting a review: www.novusbio.com/reviews/submit/NB300-112

Earn gift cards/discounts by submitting a publication using this product:

www.novusbio.com/publications

