

# Product Datasheet

## Histone H3 [Monomethyl Lys56] Antibody - BSA Free NB21-1341

Unit Size: 0.05 mg

Store at 4C short term. Aliquot and store at -20C long term. Avoid freeze-thaw cycles.

[www.novusbio.com](http://www.novusbio.com)



[technical@novusbio.com](mailto:technical@novusbio.com)

Protocols, Publications, Related Products, Reviews, Research Tools and Images at:  
[www.novusbio.com/NB21-1341](http://www.novusbio.com/NB21-1341)

Updated 9/9/2025 v.20.1

Earn rewards for product  
reviews and publications.

Submit a publication at [www.novusbio.com/publications](http://www.novusbio.com/publications)

Submit a review at [www.novusbio.com/reviews/destination/NB21-1341](http://www.novusbio.com/reviews/destination/NB21-1341)



**NB21-1341**

Histone H3 [Monomethyl Lys56] Antibody - BSA Free

Product Information	
Unit Size	0.05 mg
Concentration	0.63 mg/ml
Storage	Store at 4C short term. Aliquot and store at -20C long term. Avoid freeze-thaw cycles.
Clonality	Polyclonal
Preservative	0.05% Sodium Azide
Isotype	IgG
Purity	Immunogen affinity purified
Buffer	PBS, 30% Glycerol
Target Molecular Weight	15 kDa

Product Description	
Description	Novus Biologicals Rabbit Histone H3 [Monomethyl Lys56] Antibody - BSA Free (NB21-1341) is a polyclonal antibody validated for use in WB, ELISA, ICC/IF and ChIP. All Novus Biologicals antibodies are covered by our 100% guarantee.
Host	Rabbit
Gene ID	126961
Gene Symbol	H3C14
Species	Human, Mouse, C. elegans
Immunogen	This Histone H3 [Monomethyl Lys56] antibody was raised against synthetic monomethylated peptide surrounding lysine 56 of human Histone H3 [Swiss Prot Q71DI3].
Notes	Epi-Plus antibody production in collaboration with Rockland Immunochemicals Inc. *Chromatin immunoprecipitation was performed on this product with a standard set of primers that amplify active gene loci (GAPDH, RPL30), inactive loci (MYOD1, AFM), and heterochromatic loci (alphaSat, SAT2). The resulting data indicated there was little to no amplification of these sites, which corresponds with the current literature. Until a more specific locus can be established and validated, we give this product validity for ChIP and it is backed by the full Novus guarantee.

Product Application Details	
Applications	Western Blot, Dot Blot, ELISA, Immunocytochemistry/ Immunofluorescence, In vitro assay, Chromatin Immunoprecipitation (ChIP)
Recommended Dilutions	Western Blot 1 ug/mL, ELISA, Immunocytochemistry/ Immunofluorescence 1:20 - 1:100, In vitro assay, Dot Blot 1:1000, Chromatin Immunoprecipitation (ChIP) 2-5 ug per million cells

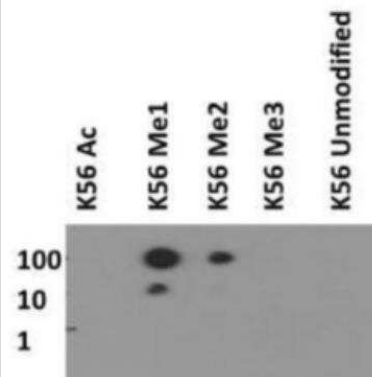


## Images

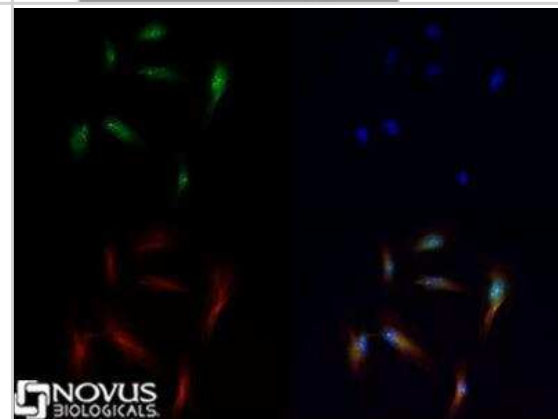
Western Blot: Histone H3 [Monomethyl Lys56] Antibody [NB21-1341] - Antibody was tested in NIH-3T3 histone prep lysate. Observed molecular weight is ~15 kDa.



Dot Blot: Histone H3 [Monomethyl Lys56] Antibody [NB21-1341] - H3 K56me1 in picomoles of peptide.



Immunocytochemistry/Immunofluorescence: Histone H3 [Monomethyl Lys56] Antibody [NB21-1341] - Antibody was tested in HeLa cells with DyLight 488 (green). Nuclei and alpha-tubulin were counterstained with DAPI (blue) and DyLight 550 (red).



## Procedures

### Western Blot protocol specific for H3K56me1 antibody (NB21-1341)

Histone H3 [Monomethyl Lys56] Antibody:

Western Blot Protocol

1. Perform SDS-PAGE on samples to be analyzed, loading 40 ug of histone preps per lane.
2. Transfer proteins to membrane according to the instructions provided by the manufacturer of the membrane and transfer apparatus.
3. Stain according to standard Ponceau S procedure (or similar product) to assess transfer success, and mark molecular weight standards where appropriate.
4. Rinse the blot.
5. Block the membrane using standard blocking buffer for at least 1 hour.
6. Wash the membrane in wash buffer three times for 10 minutes each.
7. Dilute primary antibody in blocking buffer and incubate 1 hour at room temperature.
8. Wash the membrane in wash buffer three times for 10 minutes each.
9. Apply the diluted HRP conjugated secondary antibody in blocking buffer (as per manufacturers instructions) and incubate 1 hour at room temperature.
10. Wash the blot in wash buffer three times for 10 minutes each (this step can be repeated as required to reduce background).
11. Apply the detection reagent of choice in accordance with the manufacturers instructions.

Note: Tween-20 can be added to the blocking or antibody dilution buffer at a final concentration of 0.05-0.2%.

### Immunocytochemistry/Immunofluorescence protocol for Histone H3 Antibody (NB21-1341)

Histone H3 [Monomethyl Lys56] Antibody:

Immunocytochemistry Protocol

Culture cells to appropriate density in 35 mm culture dishes or 6-well plates.

1. Remove culture medium and add 10% formalin to the dish. Fix at room temperature for 30 minutes.
2. Remove the formalin and add ice cold methanol. Incubate for 5-10 minutes.
3. Remove methanol and add washing solution (i.e. PBS). Be sure to not let the specimen dry out. Wash three times for 10 minutes.
4. To block nonspecific antibody binding incubate in 10% normal goat serum from 1 hour to overnight at room temperature.
5. Add primary antibody at appropriate dilution and incubate at room temperature from 2 hours to overnight at room temperature.
6. Remove primary antibody and replace with washing solution. Wash three times for 10 minutes.
7. Add secondary antibody at appropriate dilution. Incubate for 1 hour at room temperature.
8. Remove antibody and replace with wash solution, then wash for 10 minutes. Add Hoechst 33258 to wash solution at 1:25,000 and incubate for 10 minutes. Wash a third time for 10 minutes.
9. Cells can be viewed directly after washing. The plates can also be stored in PBS containing Azide covered in Parafilm (TM). Cells can also be cover-slipped using Fluoromount, with appropriate sealing.

\*The above information is only intended as a guide. The researcher should determine what protocol best meets their needs. Please follow safe laboratory procedures.

### Chromatin Immunoprecipitation protocol for Histone H3 Antibody (NB21-1341)

Histone H3 [Monomethyl Lys56] Antibody:

Chromatin Immunoprecipitation Protocol

Cell Fixation and Preparation

1. Begin with a cell culture that has reached 80% confluency.
2. Add formaldehyde to a final concentration of 1% in growth media and incubate for 10 minutes at room temperature.
3. Add glycine to reach a final concentration of 125 mM in the media. Incubate for 5 minutes at room temperature.
4. Remove all media and wash twice with 20 mL of ice cold PBS.
5. Add 2 mL of ice cold PBS with protease inhibitors\*. Scrape cells into microcentrifuge tube.
6. Spin cells at 4C for 5 minutes at 800 x g.
7. Remove supernatant and resuspend cells in 750 ul of RIPA lysis buffer containing protease inhibitors\* per  $1 \times 10^7$  cells (enough for 10 IPs). Incubate at 4C for 15 minutes.

8. Spin cells at 4C for 5 minutes at 800 x g.

### DNA Shearing by Sonication

1. Sonicate crosslinked DNA to fragments sizes of 200-1000 base pairs. Keep samples ice cold to prevent denaturing of chromatin. Conditions for fragmenting must be empirically derived, and vary depending on equipment, cell type, cell density, and cross-linking efficiency.
2. Centrifuge samples to remove debris at 4C for 10 minutes at 12,500 x g. Remove supernatant and transfer to a new tube. Discard pellet. Set aside 75 ul of sample for input fraction, which will not go through the subsequent IP steps. The remaining sample can be moved into 75 ul aliquots, each of which is sufficient for a single IP. Although it is preferable to proceed directly to the following steps, sheared chromatin can now be frozen at -80C for up to 1 month.
  - a. Optional: Test the efficiency of the shearing by running 5-10 ul of sample on a 2% agarose gel after reversal of crosslinking, RNase treatment (0.5 mg/ml) and proteinase K treatment (0.1 ug/ul) as described below.

### Chromatin Immunoprecipitation

Recommended controls include: No antibody negative control OR normal IgG negative control, positive control antibody.

1. Dilute each IP sample 1:10 by adding 75 ul sheared chromatin to 675 ul dilution buffer, along with appropriate protease inhibitors\*. Save undiluted input fraction for step 10.
2. Add 25 ul of fully suspended protein A/G magnetic bead slurry. Do not allow the beads to dry.
3. Add antibody of interest to the diluted sample. For best results, incubate tubes with rotation at 4C overnight. Alternatively, incubate at room temperature for 1-2 hours.
4. Pellet magnetic beads with a magnetic separator and remove the supernatant.
5. Add 750 ul cold low salt buffer and wash for 5 minutes with rotation. Pellet beads with separator and discard supernatant.
6. Add 750 ul cold high salt buffer and wash for 5 minutes with rotation. Pellet beads with separator and discard supernatant.
7. Add 750 ul cold LiCl buffer and wash for 5 minutes with rotation. Pellet beads with separator and discard supernatant.
8. Add 750 ul cold TE buffer and wash for 5 minutes with rotation. Pellet beads with separator and discard supernatant.
9. Elute complex by adding 200 ul elution buffer and agitate at RT for 15 minutes. Pellet beads with separator and discard beads. Keep the supernatant.
10. Add 8 ul of 5M NaCl and 2 ul of proteinase K (10 ug/ul) to each sample to reverse cross-linking. For the input fraction, add 125 ul of elution buffer along with NaCl and proteinase K. Incubate at 62 C for 4 hours or overnight. Incubate at 95 C for 10 minutes to deactivate proteinase K.
  - a. Optional: To decrease time, this step may also be performed at 95 C for 20 minutes without proteinase K treatment.

### DNA Purification and Amplification

1. DNA can now be purified with either a commercially available column kit or by phenol/chloroform extraction.
2. Perform real-time PCR with 2 ul of purified DNA and primers (catalog numbers NBP1-71650, NBP1-71651, NBP1-71652, NBP1-71653, NBP1-71654 and NBP1-71655) per reaction. Dilute input fraction to 1% before PCR. Normalize all IPs and no antibody control IP to adjusted input fraction.
  - a. Ex. Raw input CT=30, adjusted input:  $30 - 6.44 = 23.4$
  - b. Antibody CT=28
  - c. Normalized signal relative to input:  $2^{(23.4-28)} = 0.04$

### Buffers

Dilution Buffer: 0.01% SDS, 1.1% Triton X-100, 1.2 mM EDTA, 16.7 mM Tris-HCL (pH8.1), 167 mM NaCl

Low Salt Wash Buffer: 0.1% SDS, 1% Triton X-100, 2mM EDTA, 20mM Tris-HCl, pH 8.1, 150mM NaCl.

High Salt Wash Buffer: 0.1% SDS, 1% Triton X-100, 2mM EDTA, 20mM Tris-HCl, pH 8.1, 500mM NaCl.

LiCl Wash Buffer: 250mM LiCl, 1% NP-40, 1% Na-deoxycholate, 1mM EDTA, 10mM Tris, pH 8.1.

TE Buffer: 10mM Tris-HCL pH 8.1, 1 mM EDTA

Elution buffer: 1% SDS, 100mM NaHCO<sub>3</sub>

\* Please note that protease inhibitors have variable half-lives and should be freshly prepared as applicable.



### Novus Biologicals USA

10730 E. Briarwood Avenue  
Centennial, CO 80112  
USA  
Phone: 303.730.1950  
Toll Free: 1.888.506.6887  
Fax: 303.730.1966  
nb-customerservice@bio-techne.com

### Bio-Techne Canada

21 Canmotor Ave  
Toronto, ON M8Z 4E6  
Canada  
Phone: 905.827.6400  
Toll Free: 855.668.8722  
Fax: 905.827.6402  
canada.inquires@bio-techne.com

### Bio-Techne Ltd

19 Barton Lane  
Abingdon Science Park  
Abingdon, OX14 3NB, United Kingdom  
Phone: (44) (0) 1235 529449  
Free Phone: 0800 37 34 15  
Fax: (44) (0) 1235 533420  
info.EMEA@bio-techne.com

### General Contact Information

www.novusbio.com  
Technical Support: nb-technical@bio-techne.com  
Orders: nb-customerservice@bio-techne.com  
General: novus@novusbio.com

### Products Related to NB21-1341

---

NBP2-33376H	Blue Marker Antibody (6F4-F6) [HRP]
HAF008	Goat anti-Rabbit IgG Secondary Antibody [HRP]
NB7160	Goat anti-Rabbit IgG (H+L) Secondary Antibody [HRP]
NBP2-24891	Rabbit IgG Isotype Control

---

### Limitations

This product is for research use only and is not approved for use in humans or in clinical diagnosis. Primary Antibodies are guaranteed for 1 year from date of receipt.

For more information on our 100% guarantee, please visit [www.novusbio.com/guarantee](http://www.novusbio.com/guarantee)

Earn gift cards/discounts by submitting a review: [www.novusbio.com/reviews/submit/NB21-1341](http://www.novusbio.com/reviews/submit/NB21-1341)

Earn gift cards/discounts by submitting a publication using this product:  
[www.novusbio.com/publications](http://www.novusbio.com/publications)

