

Product Datasheet

RPSA Antibody (MLuC5) NB200-631

Unit Size: 500 uL

Store at 4C. Do not freeze.

www.novusbio.com



technical@novusbio.com

Protocols, Publications, Related Products, Reviews, Research Tools and Images at:
www.novusbio.com/NB200-631

Updated 9/9/2025 v.20.1

Earn rewards for product
reviews and publications.

Submit a publication at www.novusbio.com/publications

Submit a review at www.novusbio.com/reviews/destination/NB200-631



NB200-631

RPSA Antibody (MLuC5)

| Product Information | |
|---------------------|--------------------------------|
| Unit Size | 500 uL |
| Concentration | 0.2 mg/ml |
| Storage | Store at 4C. Do not freeze. |
| Clonality | Monoclonal |
| Clone | MLuC5 |
| Preservative | 0.09% Sodium Azide |
| Isotype | IgM |
| Purity | Ammonium sulfate precipitation |
| Buffer | PBS (pH 7.4) and 0.2% BSA |

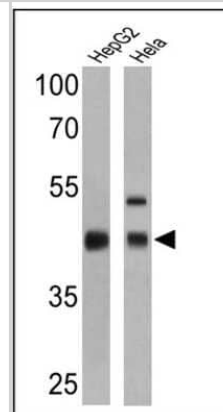
| Product Description | |
|---------------------|---|
| Description | Novus Biologicals Mouse RPSA Antibody (MLuC5) (NB200-631) is a monoclonal antibody validated for use in IHC, WB, Flow and ICC/IF. All Novus Biologicals antibodies are covered by our 100% guarantee. |
| Host | Mouse |
| Gene ID | 3921 |
| Gene Symbol | RPSA |
| Species | Human, Mouse |
| Reactivity Notes | Mouse reactivity reported in scientific literature (PMID: 21320497). |
| Immunogen | Small cell lung carcinoma N592 live cells |

| Product Application Details | |
|-----------------------------|---|
| Applications | Western Blot, Immunohistochemistry-Paraffin, Flow Cytometry, Immunocytochemistry/ Immunofluorescence, Immunohistochemistry |
| Recommended Dilutions | Western Blot 1:10 - 1:200, Flow Cytometry 1:10 - 1:1000, Immunohistochemistry 1:10 - 1:500, Immunocytochemistry/ Immunofluorescence 1:10 - 1:200, Immunohistochemistry-Paraffin 4 - 8 ug/mL |

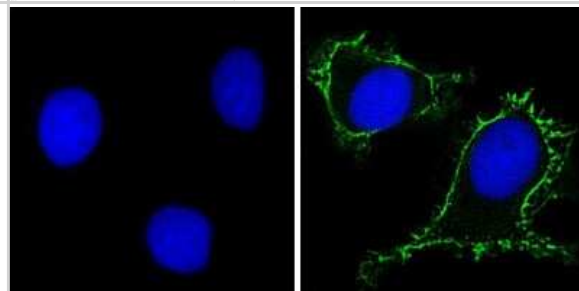


Images

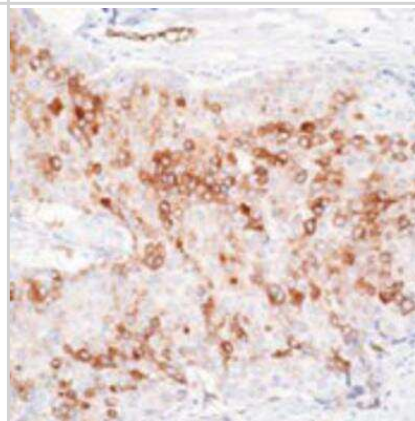
Western Blot: RPSA Antibody (MLuC5) [NB200-631] - Analysis of 25 ug of HepG2 (lane 1) and Hela (lane 2) cell lysates.



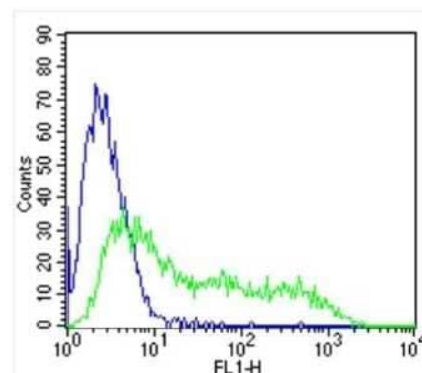
Immunocytochemistry/Immunofluorescence: RPSA Antibody (MLuC5) [NB200-631] - Analysis of Laminin Receptor (green) showing staining in the membrane of MCF-7 cells (right) compared to a negative control without primary antibody (left).



Immunohistochemistry-Paraffin: RPSA Antibody (MLuC5) [NB200-631] - Human breast carcinoma stained with Laminin Receptor antibody using peroxidase-conjugate and DAB chromogen. Note cell membrane with some cytoplasmic staining of tumor cells.



Flow Cytometry: RPSA Antibody (MLuC5) [NB200-631] - Analysis of Laminin Receptor in MCF-7 cells (green) compared to an isotype control (blue).





Novus Biologicals USA

10730 E. Briarwood Avenue
Centennial, CO 80112
USA
Phone: 303.730.1950
Toll Free: 1.888.506.6887
Fax: 303.730.1966
nb-customerservice@bio-techne.com

Bio-Techne Canada

21 Canmotor Ave
Toronto, ON M8Z 4E6
Canada
Phone: 905.827.6400
Toll Free: 855.668.8722
Fax: 905.827.6402
canada.inquires@bio-techne.com

Bio-Techne Ltd

19 Barton Lane
Abingdon Science Park
Abingdon, OX14 3NB, United Kingdom
Phone: (44) (0) 1235 529449
Free Phone: 0800 37 34 15
Fax: (44) (0) 1235 533420
info.EMEA@bio-techne.com

General Contact Information

www.novusbio.com
Technical Support: nb-technical@bio-techne.com
Orders: nb-customerservice@bio-techne.com
General: novus@novusbio.com

Products Related to NB200-631

| | |
|-------------|--|
| NBP2-33376H | Blue Marker Antibody (6F4-F6) [HRP] |
| HAF007 | Goat anti-Mouse IgG Secondary Antibody [HRP] |
| NB7539 | Goat anti-Mouse IgG (H+L) Secondary Antibody [HRP] |
| NBP1-97007 | Mouse IgM Isotype Control |

Limitations

This product is for research use only and is not approved for use in humans or in clinical diagnosis. Primary Antibodies are guaranteed for 1 year from date of receipt.

For more information on our 100% guarantee, please visit www.novusbio.com/guarantee

Earn gift cards/discounts by submitting a review: www.novusbio.com/reviews/submit/NB200-631

Earn gift cards/discounts by submitting a publication using this product:
www.novusbio.com/publications

