

# Product Datasheet

## Integrin beta 2/CD18 Antibody (YFC118.3) - BSA Free NB200-610

Unit Size: 0.1 mg

Store at 4C short term. Aliquot and store at -20C long term. Avoid freeze-thaw cycles.

[www.novusbio.com](http://www.novusbio.com)



[technical@novusbio.com](mailto:technical@novusbio.com)

**Reviews: 2**

Protocols, Publications, Related Products, Reviews, Research Tools and Images at:  
[www.novusbio.com/NB200-610](http://www.novusbio.com/NB200-610)

Updated 9/9/2025 v.20.1

**Earn rewards for product  
reviews and publications.**

Submit a publication at [www.novusbio.com/publications](http://www.novusbio.com/publications)

Submit a review at [www.novusbio.com/reviews/destination/NB200-610](http://www.novusbio.com/reviews/destination/NB200-610)



**NB200-610**

Integrin beta 2/CD18 Antibody (YFC118.3) - BSA Free

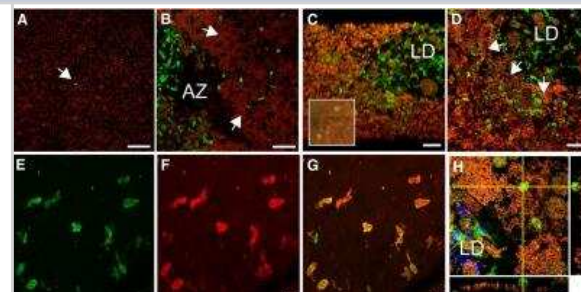
Product Information	
Unit Size	0.1 mg
Concentration	1 mg/ml
Storage	Store at 4C short term. Aliquot and store at -20C long term. Avoid freeze-thaw cycles.
Clonality	Monoclonal
Clone	YFC118.3
Preservative	0.09% Sodium Azide
Isotype	IgG2b
Purity	Protein G purified
Buffer	PBS

Product Description	
Description	Novus Biologicals Rat Integrin beta 2/CD18 Antibody (YFC118.3) - BSA Free (NB200-610) is a monoclonal antibody validated for use in IHC, Flow and IP. All Novus Biologicals antibodies are covered by our 100% guarantee.
Host	Rat
Gene ID	3689
Gene Symbol	ITGB2
Species	Human
Reactivity Notes	Predicted cross-reactivities: Dog, Guinea Pig
Specificity/Sensitivity	This recognises the human CD18 cell surface antigen, the integrin beta2 subunit. CD18 is expressed by the majority of leucocytes.
Immunogen	Human neutrophils

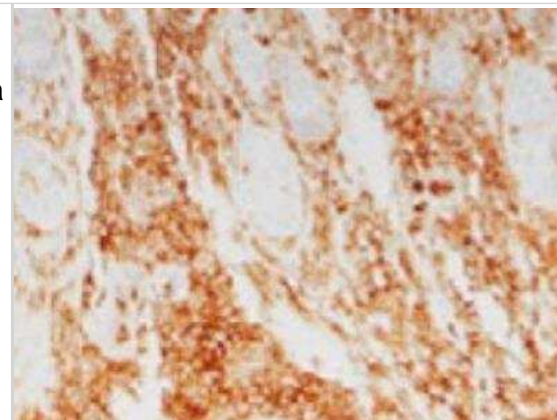
Product Application Details	
Applications	Flow Cytometry, Immunohistochemistry, Immunohistochemistry-Frozen, Immunoprecipitation
Recommended Dilutions	Flow Cytometry 1:50-1:100, Immunohistochemistry 1:10-1:500, Immunoprecipitation 1:10-1:500, Immunohistochemistry-Frozen 1:1000-1:5000

**Images**

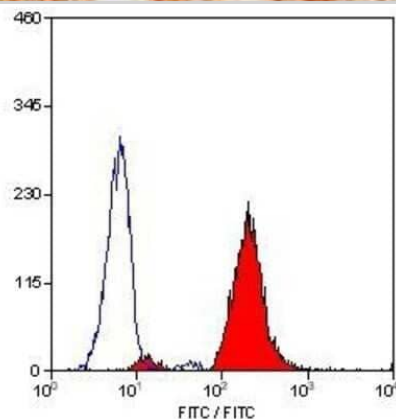
Immunocytochemistry/Immunofluorescence: Integrin beta 2/CD18 Antibody (YFC118.3) [NB200-610] - A-D Confocal microscopy of IBA-1 (green staining) immunohistochemistry of RPE flatmounts (RPE autofluorescence visible as orange due to its autofluorescence in the red and green channel) from a healthy donor (A), a geographic atrophy lesion (B), and large drusen (C and D). (A, B, D): orthogonal Z-stack projection; (C): oblique Z-stack projection and dissecting microscope appearance of postmortem large drusen after removal of the overlying retina (inset). E-G Double-labeling on the subretinal side of the retina (to avoid masking by RPE autofluorescence) of IBA-1+ (E, green fluorescence) and CD18 (F, red fluorescence; G, merge). H. Orthogonal and lateral Z-stack of a subretinal IBA-1+ (green fluorescence) MPs adjacent to the RPE (orange autofluorescence) in the vicinity of a large drusen.



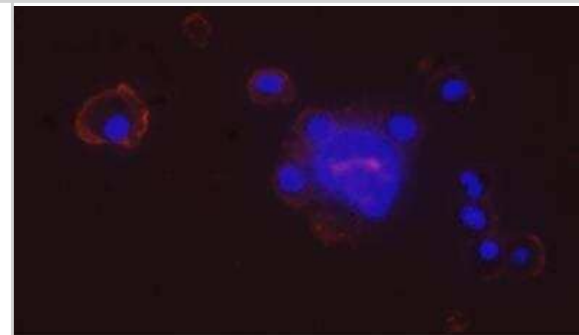
Immunohistochemistry-Frozen: Integrin beta 2/CD18 Antibody (YFC118.3) [NB200-610] - Canine histiocytic sarcoma stained with Integrin beta 2/CD18 Antibody (YFC118.3). IHC-Fr image submitted by a verified customer review.



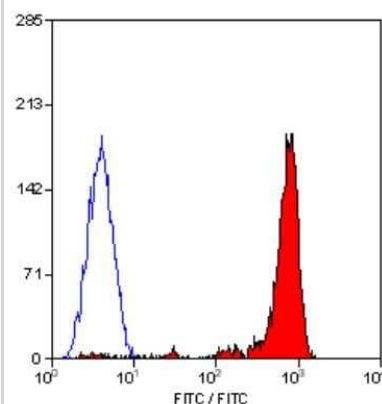
Flow Cytometry: Integrin beta 2/CD18 Antibody (YFC118.3) [NB200-610] - Staining of human peripheral blood granulocytes with RAT ANTI HUMAN CD18: FITC.



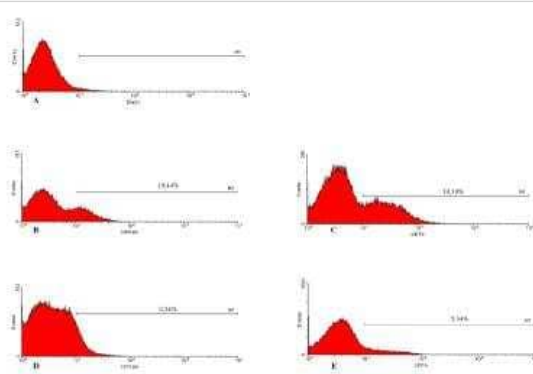
Immunocytochemistry/Immunofluorescence: Integrin beta 2/CD18 Antibody (YFC118.3) [NB200-610] - Analysis of canine thoracic fluid samples using anti-Integrin beta 2 antibody. The antibody showing positive cell surface staining. ICC/IF image submitted by a verified customer review.



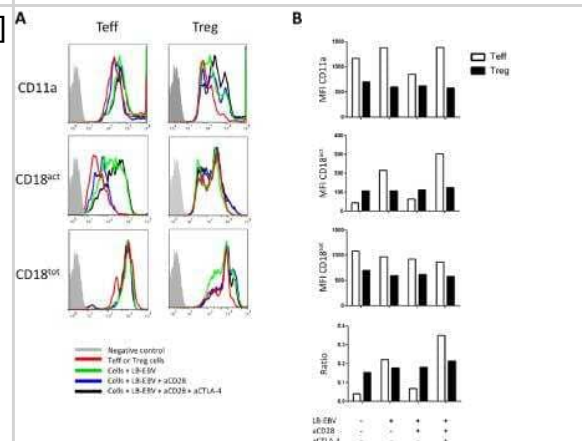
Flow Cytometry: Integrin beta 2/CD18 Antibody (YFC118.3) [NB200-610] - Staining of human peripheral blood lymphocytes with Rat anti Human CD18.



Flow Cytometry: Integrin beta 2/CD18 Antibody (YFC118.3) [NB200-610]  
 - A) Isotype control with macrophages showing delineation of the M1 marker based on the negative population. B and C represent expression of CD18 (B) or CD11b (C) before incubation with Leishmania. D and E represent expression of CD18 (D) or CD11b (E) after association with Leishmania in a SD assay. In all cases the percent positive cells within the M1 marker are identified. This Figure is a representative diagram of 4 experiments with similar findings.



Flow Cytometry: Integrin beta 2/CD18 Antibody (YFC118.3) [NB200-610]  
 - LFA-1 activation analyses by Flow Cytometry. (A) Profiles of CD11a, CD18 activation epitope (CD18act, representing high affinity conformation) and CD18 (CD18tot) expression by Teff and Treg#1 cells pre-incubated or not with indicated antibodies. Anti-CD28 and anti-CTLA-4 were used at 10 ug/ml. (B) Histograms of Mean Fluorescent Intensity (MFI) of CD11a, CD18act and CD18tot expressed on Teff and Treg#1 cells. Ratio CD18act MFI: CD18tot was established to analyze LFA-1 high affinity conformation in indicated conditions. Data are representative of more than three different experiments. Filled gray, negative control; Red line, Teff and Treg cells alone; Green line, cells with APC; Blue line, cells with APC and anti-CD28; and Black line: cells with APC, anti-CD28 and anti-CTLA-4.





### **Novus Biologicals USA**

10730 E. Briarwood Avenue  
Centennial, CO 80112  
USA  
Phone: 303.730.1950  
Toll Free: 1.888.506.6887  
Fax: 303.730.1966  
nb-customerservice@bio-techne.com

### **Bio-Techne Canada**

21 Canmotor Ave  
Toronto, ON M8Z 4E6  
Canada  
Phone: 905.827.6400  
Toll Free: 855.668.8722  
Fax: 905.827.6402  
canada.inquires@bio-techne.com

### **Bio-Techne Ltd**

19 Barton Lane  
Abingdon Science Park  
Abingdon, OX14 3NB, United Kingdom  
Phone: (44) (0) 1235 529449  
Free Phone: 0800 37 34 15  
Fax: (44) (0) 1235 533420  
info.EMEA@bio-techne.com

### **General Contact Information**

www.novusbio.com  
Technical Support: nb-technical@bio-techne.com  
Orders: nb-customerservice@bio-techne.com  
General: novus@novusbio.com

### **Products Related to NB200-610**

---

NBL1-12072	Integrin beta 2/CD18 Overexpression Lysate
HAF005	Goat anti-Rat IgG Secondary Antibody [HRP]
NB7115	Goat anti-Rat IgG (H+L) Secondary Antibody [HRP]
DDXCR03	Rat IgG2b Isotype Control

---

### **Limitations**

This product is for research use only and is not approved for use in humans or in clinical diagnosis. Primary Antibodies are guaranteed for 1 year from date of receipt.

For more information on our 100% guarantee, please visit [www.novusbio.com/guarantee](http://www.novusbio.com/guarantee)

Earn gift cards/discounts by submitting a review: [www.novusbio.com/reviews/submit/NB200-610](http://www.novusbio.com/reviews/submit/NB200-610)

Earn gift cards/discounts by submitting a publication using this product:  
[www.novusbio.com/publications](http://www.novusbio.com/publications)

