

Product Datasheet

PELP1 Antibody - BSA Free NB200-331

Unit Size: 100 ul

Store at 4C. Do not freeze.

www.novusbio.com



technical@novusbio.com

Publications: 18

Protocols, Publications, Related Products, Reviews, Research Tools and Images at:
www.novusbio.com/NB200-331

Updated 9/9/2025 v.20.1

**Earn rewards for product
reviews and publications.**

Submit a publication at www.novusbio.com/publications

Submit a review at www.novusbio.com/reviews/destination/NB200-331



NB200-331

PELP1 Antibody - BSA Free

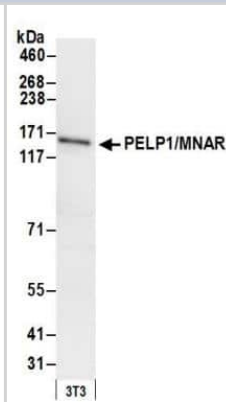
Product Information	
Unit Size	100 ul
Concentration	1.0 mg/ml
Storage	Store at 4C. Do not freeze.
Clonality	Polyclonal
Preservative	0.09% Sodium Azide
Isotype	IgG
Purity	Immunogen affinity purified
Buffer	Tris-Citrate/Phosphate (pH 7.0 - 8.0)

Product Description	
Description	Novus Biologicals Rabbit PELP1 Antibody - BSA Free (NB200-331) is a polyclonal antibody validated for use in IHC, WB and IP. Anti-PELP1 Antibody: Cited in 18 publications. All Novus Biologicals antibodies are covered by our 100% guarantee.
Host	Rabbit
Gene ID	27043
Gene Symbol	PELP1
Species	Human, Mouse
Immunogen	A synthetic peptide mapping to a region between residues 1000 and 1050 of human, proline-, glutamic acid-, leucine-rich protein 1/ modulator of nongenomic activity of estrogen receptor using the numbering given in entry AAN41255.1 (GeneID 27043).

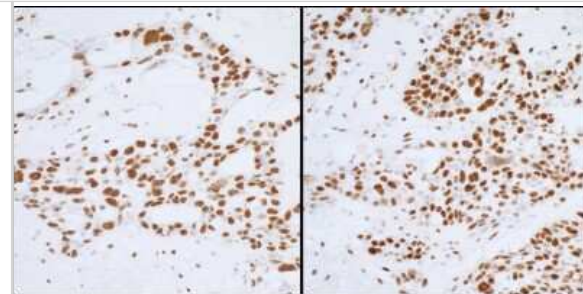
Product Application Details	
Applications	Western Blot, Immunohistochemistry-Paraffin, Immunohistochemistry, Immunoprecipitation
Recommended Dilutions	Western Blot 1:2500-1:10000, Immunohistochemistry 1:2000 - 1:10000, Immunoprecipitation 2-5 ug/mg lysate, Immunohistochemistry-Paraffin 1:2000 - 1:10000
Application Notes	Epitope retrieval with citrate buffer pH 6.0 is recommended for FFPE tissue sections.

Images

Western Blot: PELP1 Antibody [NB200-331] - Detection of mouse PELP1/MNAR by western blot. Samples: Whole cell lysate (50 ug) from NIH 3T3 cells prepared using NETN lysis buffer. Antibody: Affinity purified rabbit anti-PELP1/MNAR antibody NB200-331 used for WB at 0.4 ug/ml. Detection: Chemiluminescence with an exposure time of 10 seconds.



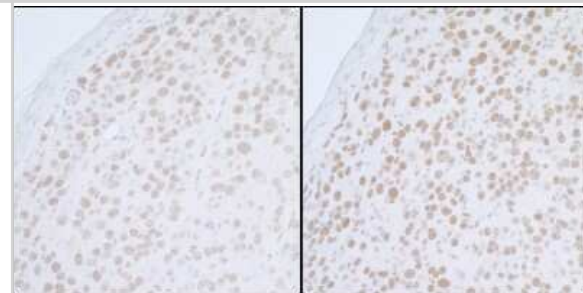
Immunohistochemistry-Paraffin: PELP1 Antibody [NB200-331] - Human ovarian carcinoma.~ Antibodies: Affinity purified rabbit anti-PELP1/MNAR used at a dilution of 1:2,500 (0.4ug/ml) (left) used at a dilution of 1:5,000 (0.2ug/ml) (right). Detection: DAB.



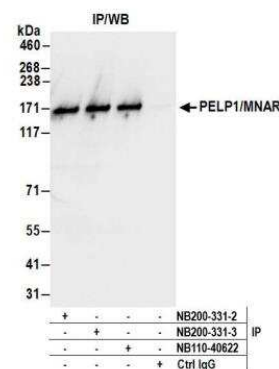
Western Blot: PELP1 Antibody [NB200-331] - Detection of Human PELP1/MNAR by Western Blot. Samples: Whole cell lysate (50 ug) from HeLa and 293T cells prepared using NETN lysis buffer. Antibody: Affinity purified rabbit anti-PELP1/MNAR antibody NB200-331 used for WB at 0.4 ug/ml. Detection: Chemiluminescence with an exposure time of 3 seconds.



Immunohistochemistry-Paraffin: PELP1 Antibody [NB200-331] - Samples: FFPE sections of mouse renal cell carcinoma.~ Antibodies: Affinity purified rabbit anti-PELP1/MNAR dilution of 1:2,500 (0.4ug/ml) (left) and used at a dilution of 1:5,000 (0.2ug/ml) (right). Detection: DAB.



Immunoprecipitation: PELP1 Antibody [NB200-331] - Detection of human PELP1/MNAR by western blot of immunoprecipitates. Samples: Whole cell lysate (0.5 or 1.0 mg per IP reaction; 20% of IP loaded) from HeLa cells prepared using NETN lysis buffer. Antibodies: Affinity purified rabbit anti-PELP1/MNAR antibody NB200-331 (lot NB200-331-3) used for IP at 6 ug per reaction. PELP1/MNAR was also immunoprecipitated by a previous lot of this antibody (lot NB200-331-2) and rabbit anti-PELP1/MNAR antibody NB110-40622. For blotting immunoprecipitated PELP1/MNAR, NB200-331 was used at 0.4 ug/ml. Detection: Chemiluminescence with an exposure time of 1 second.



Publications

Regan Anderson TM, Ma SH, Raj GV et al. Breast Tumor Kinase (Brk/PTK6) Is Induced by HIF, Glucocorticoid Receptor, and PELP1-Mediated Stress Signaling in Triple-Negative Breast Cancer *Cancer Res*. 2016-01-29 [PMID: 26825173] (WB, Human)

Cortez V, Mann M, Tekmal S et al. Targeting the PELP1-KDM1 axis as a potential therapeutic strategy for breast cancer. *Breast Cancer Res* 2012-07-01 [PMID: 22812534]

Chakravarty D, Roy SS, Babu CR et al. Therapeutic targeting of PELP1 prevents ovarian cancer growth and metastasis. *Clin Cancer Res* 2011-04-01 [PMID: 21421858]

Nair BC, Nair SS, Chakravarty D et al. Cyclin-dependent kinase-mediated phosphorylation plays a critical role in the oncogenic functions of PELP1. *Cancer Res* 2010-09-01 [PMID: 20807815]

Kayahara M, Ohanian J, Ohanian V et al. MNAR functionally interacts with both NH₂- and COOH-terminal GR domains to modulate transactivation. *Am J Physiol Endocrinol Metab* 2008-11-01 [PMID: 18682536]

Dimple C, Nair SS, Rajhans R et al. Role of PELP1/MNAR signaling in ovarian tumorigenesis. *Cancer Res* 2008-06-01 [PMID: 18559538]

Nagpal JK, Nair S, Chakravarty D et al. Growth factor regulation of estrogen receptor coregulator PELP1 functions via Protein Kinase A pathway. *Mol Cancer Res* 2008-05-01 [PMID: 18505929]

Galluzzo P, Ascenzi P, Bulzomi P et al. The nutritional flavanone naringenin triggers antiestrogenic effects by regulating estrogen receptor alpha-palmitoylation. *Endocrinology* 2008-05-01 [PMID: 18239068]

Rajhans R, Nair HB, Nair SS et al. Modulation of in situ estrogen synthesis by proline-, glutamic acid-, and leucine-rich protein-1: potential estrogen receptor autocrine signaling loop in breast cancer cells. *Mol Endocrinol* 2008-03-01 [PMID: 18079323]

Ohshiro K, Rayala SK, Kondo S et al. Identifying the estrogen receptor coactivator PELP1 in autophagosomes. *Cancer Res* 2007-09-01 [PMID: 17804729]

Rajhans R, Nair S, Holden AH et al. Oncogenic potential of the nuclear receptor coregulator proline-, glutamic acid-, leucine-rich protein 1/modulator of the nongenomic actions of the estrogen receptor. *Cancer Res* 2007-06-01 [PMID: 17545633]

Fan P, Wang J, Santen RJ et al. Long-term treatment with tamoxifen facilitates translocation of estrogen receptor alpha out of the nucleus and enhances its interaction with EGFR in MCF-7 breast cancer cells. *Cancer Res* 2007-02-01 [PMID: 17283173]

More publications at <http://www.novusbio.com/NB200-331>





Novus Biologicals USA

10730 E. Briarwood Avenue
Centennial, CO 80112
USA
Phone: 303.730.1950
Toll Free: 1.888.506.6887
Fax: 303.730.1966
nb-customerservice@bio-techne.com

Bio-Techne Canada

21 Canmotor Ave
Toronto, ON M8Z 4E6
Canada
Phone: 905.827.6400
Toll Free: 855.668.8722
Fax: 905.827.6402
canada.inquires@bio-techne.com

Bio-Techne Ltd

19 Barton Lane
Abingdon Science Park
Abingdon, OX14 3NB, United Kingdom
Phone: (44) (0) 1235 529449
Free Phone: 0800 37 34 15
Fax: (44) (0) 1235 533420
info.EMEA@bio-techne.com

General Contact Information

www.novusbio.com
Technical Support: nb-technical@bio-techne.com
Orders: nb-customerservice@bio-techne.com
General: novus@novusbio.com

Products Related to NB200-331

NB800-PC9	HeLa Nuclear Cell Lysate
NBP2-33376H	Blue Marker Antibody (6F4-F6) [HRP]
HAF008	Goat anti-Rabbit IgG Secondary Antibody [HRP]
NB7160	Goat anti-Rabbit IgG (H+L) Secondary Antibody [HRP]
NBP2-24891	Rabbit IgG Isotype Control

Limitations

This product is for research use only and is not approved for use in humans or in clinical diagnosis. Primary Antibodies are guaranteed for 1 year from date of receipt.

For more information on our 100% guarantee, please visit www.novusbio.com/guarantee

Earn gift cards/discounts by submitting a review: www.novusbio.com/reviews/submit/NB200-331

Earn gift cards/discounts by submitting a publication using this product:
www.novusbio.com/publications

