

# Product Datasheet

## LATS1 Antibody NB200-197

Unit Size: 0.02 mg

Store at 4C. Do not freeze.

[www.novusbio.com](http://www.novusbio.com)



[technical@novusbio.com](mailto:technical@novusbio.com)

### Publications: 6

Protocols, Publications, Related Products, Reviews, Research Tools and Images at:  
[www.novusbio.com/NB200-197](http://www.novusbio.com/NB200-197)

Updated 9/9/2025 v.20.1

Earn rewards for product  
reviews and publications.

Submit a publication at [www.novusbio.com/publications](http://www.novusbio.com/publications)

Submit a review at [www.novusbio.com/reviews/destination/NB200-197](http://www.novusbio.com/reviews/destination/NB200-197)



**NB200-197**

## LATS1 Antibody

Product Information	
Unit Size	0.02 mg
Concentration	0.2 mg/ml
Storage	Store at 4C. Do not freeze.
Clonality	Polyclonal
Preservative	0.09% Sodium Azide
Isotype	IgG
Purity	Immunogen affinity purified
Buffer	TBS and 0.1% BSA

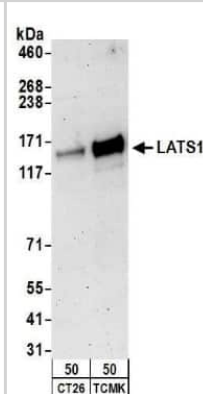
Product Description	
Description	Novus Biologicals Rabbit LATS1 Antibody (NB200-197) is a polyclonal antibody validated for use in WB and IP. Anti-LATS1 Antibody: Cited in 6 publications. All Novus Biologicals antibodies are covered by our 100% guarantee.
Host	Rabbit
Gene ID	9113
Gene Symbol	LATS1
Species	Human, Mouse
Immunogen	The immunogen recognized by this antibody maps to a region between residues 50 and 100 of human Large Tumor Suppressor homolog 1 using the numbering given in SwissProt entry O95835 (GeneID 9113).

Product Application Details	
Applications	Western Blot, Immunoprecipitation
Recommended Dilutions	Western Blot, Immunoprecipitation 2 -5 ug/mg lysate
Application Notes	This antibody can be used in WesternBlot. Prepare working dilution immediately before use. Recommended Starting Dilutions*: WB: 1:5,000 - 1:15,000. *Optimal dilutions should be determined by the end user.



## Images

Western Blot: LATS1 Antibody [NB200-197] - Detection of mouse LATS1 by western blot. Samples: Whole cell lysate (50 ug) from CT26.WT and TCMK-1 cells. Antibodies: Affinity purified rabbit anti-LATS1 antibody NB200-197 used for WB at 0.2 ug/ml. Detection: Chemiluminescence with an exposure time of 3 minutes.



Western Blot: LATS1 Antibody [NB200-197] - Detection of Human LATS1 on HeLa whole cell lysate using NB200-197. LATS1 was also immunoprecipitated with another LATS1 antibody and NB200-198 using 3 mcg/mg lysate.



## Publications

Huang JM, Nagatomo I, Suzuki E et al. YAP modifies cancer cell sensitivity to EGFR and survivin inhibitors and is negatively regulated by the non-receptor type protein tyrosine phosphatase 14. *Oncogene* 2012-06-01 [PMID: 22689061]

Mao Y, Mulvaney J, Zakaria S et al. Characterization of a Dchs1 mutant mouse reveals requirements for Dchs1-Fat4 signaling during mammalian development. *Development* 2011-03-01 [PMID: 21303848]

Salah Z, Melino G, Aqeilan RI et al. Negative regulation of the Hippo pathway by E3 ubiquitin ligase ITCH is sufficient to promote tumorigenicity. *Cancer Res* 2011-03-01 [PMID: 21212414]

Oh S, Lee D, Kim T et al. Crucial role for Mst1 and Mst2 kinases in early embryonic development of the mouse. *Mol Cell Biol* 2009-12-01 [PMID: 19786569]

Zhang J, Smolen GA, Haber DA et al. Negative regulation of YAP by LATS1 underscores evolutionary conservation of the Drosophila Hippo pathway. *Cancer Res* 2008-04-01 [PMID: 18413746]

Lee JH, Kim TS, Yang TH et al. A crucial role of WW45 in developing epithelial tissues in the mouse. *EMBO J* 2008-04-01 [PMID: 18369314]



### **Novus Biologicals USA**

10730 E. Briarwood Avenue  
Centennial, CO 80112  
USA  
Phone: 303.730.1950  
Toll Free: 1.888.506.6887  
Fax: 303.730.1966  
nb-customerservice@bio-techne.com

### **Bio-Techne Canada**

21 Canmotor Ave  
Toronto, ON M8Z 4E6  
Canada  
Phone: 905.827.6400  
Toll Free: 855.668.8722  
Fax: 905.827.6402  
canada.inquires@bio-techne.com

### **Bio-Techne Ltd**

19 Barton Lane  
Abingdon Science Park  
Abingdon, OX14 3NB, United Kingdom  
Phone: (44) (0) 1235 529449  
Free Phone: 0800 37 34 15  
Fax: (44) (0) 1235 533420  
info.EMEA@bio-techne.com

### **General Contact Information**

www.novusbio.com  
Technical Support: nb-technical@bio-techne.com  
Orders: nb-customerservice@bio-techne.com  
General: novus@novusbio.com

### **Products Related to NB200-197**

---

NB800-PC1	HeLa Whole Cell Lysate
NBP2-33376H	Blue Marker Antibody (6F4-F6) [HRP]
HAF008	Goat anti-Rabbit IgG Secondary Antibody [HRP]
NB7160	Goat anti-Rabbit IgG (H+L) Secondary Antibody [HRP]
NBP2-24891	Rabbit IgG Isotype Control

---

### **Limitations**

This product is for research use only and is not approved for use in humans or in clinical diagnosis. Primary Antibodies are guaranteed for 1 year from date of receipt.

For more information on our 100% guarantee, please visit [www.novusbio.com/guarantee](http://www.novusbio.com/guarantee)

Earn gift cards/discounts by submitting a review: [www.novusbio.com/reviews/submit/NB200-197](http://www.novusbio.com/reviews/submit/NB200-197)

Earn gift cards/discounts by submitting a publication using this product:  
[www.novusbio.com/publications](http://www.novusbio.com/publications)

