

Product Datasheet

Pappalysin-1/PAPP-A Antibody (10E1cc) - BSA Free NB120-8346

Unit Size: 0.2 mg

Store at 4C. Do not freeze.

www.novusbio.com



technical@novusbio.com

Reviews: 1

Protocols, Publications, Related Products, Reviews, Research Tools and Images at:
www.novusbio.com/NB120-8346

Updated 9/9/2025 v.20.1

**Earn rewards for product
reviews and publications.**

Submit a publication at www.novusbio.com/publications

Submit a review at www.novusbio.com/reviews/destination/NB120-8346



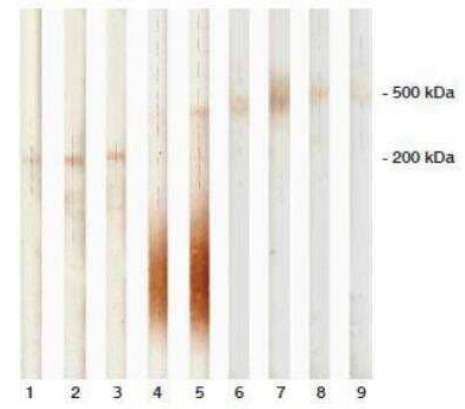
NB120-8346

Pappalysin-1/PAPP-A Antibody (10E1cc) - BSA Free

Product Information	
Unit Size	0.2 mg
Concentration	Concentrations vary lot to lot. See vial label for concentration. If unlisted please contact technical services.
Storage	Store at 4C. Do not freeze.
Clonality	Monoclonal
Clone	10E1cc
Preservative	0.09% Sodium Azide
Isotype	IgG2b
Purity	Protein A purified
Buffer	PBS (pH 7.4)
Product Description	
Description	Novus Biologicals Mouse Pappalysin-1/PAPP-A Antibody (10E1cc) - BSA Free (NB120-8346) is a monoclonal antibody validated for use in WB and IP. All Novus Biologicals antibodies are covered by our 100% guarantee.
Host	Mouse
Gene ID	5069
Gene Symbol	PAPPA
Species	Human
Specificity/Sensitivity	Human PAPP-A antigen purified from placental blood (heterotetrameric complex, consisting of PAPP-A subunits and proMBP subunits).
Immunogen	Hybridoma clone has been derived from hybridization of Sp2/0 myeloma cells with spleen cells of Balb/c mice immunized with purified human PAPP-A/proMBP (heterotetrameric PAPP-A, htPAPP-A) complex.
Product Application Details	
Applications	Western Blot, Immunoprecipitation, Sandwich ELISA
Recommended Dilutions	Western Blot 1:100-1:2000, Immunoprecipitation 1:10-1:500, Sandwich ELISA 1:100-1:2000
Application Notes	htPAPP-A and dPAPP-A (PAPP-A dimer) immunoassays and immunoprecipitation. Recommended pairs for detection of total PAPP-A (htPAPP-A and/or dPAPP-A) (capture -detection): NB100-73058 - NB120-8346, NB120-8346 - NB100-73060. Recognizes htPAPP-A, consisting of PAPP-A subunits and proMBP subunits, in non-reducing conditions.

Images

Western Blot: PAPP A Antibody (10E1) [NB120-8346] - Detection of human PAPP-A and proMBP subunits of htPAPP-A by monoclonal antibodies in Western blotting. Lane 1: 18A10 (NB100-73059) Lane 2: 7A6 (NB100-73060) Lane 3: 3C8 (NB200-402) Lane 4: 5H9 (proMBP-specific) (NB110-8423) Lane 5: 11E4 (proMBP-specific) (NB120-14597) Lane 6: 7A6 (NB100-73060) Lane 7: 10A5 (NB200-402) Lane 8: 3C8 (NB200-403) Lane 9: 10E1 (NB120-8346) Lanes 1-5: after SDS-PAGE in reduction conditions. Lanes 6-9: Non-reducing conditions. Heterotetrameric complex was detected by anti-PAPP-A MAbs





Novus Biologicals USA

10730 E. Briarwood Avenue
Centennial, CO 80112
USA
Phone: 303.730.1950
Toll Free: 1.888.506.6887
Fax: 303.730.1966
nb-customerservice@bio-techne.com

Bio-Techne Canada

21 Canmotor Ave
Toronto, ON M8Z 4E6
Canada
Phone: 905.827.6400
Toll Free: 855.668.8722
Fax: 905.827.6402
canada.inquires@bio-techne.com

Bio-Techne Ltd

19 Barton Lane
Abingdon Science Park
Abingdon, OX14 3NB, United Kingdom
Phone: (44) (0) 1235 529449
Free Phone: 0800 37 34 15
Fax: (44) (0) 1235 533420
info.EMEA@bio-techne.com

General Contact Information

www.novusbio.com
Technical Support: nb-technical@bio-techne.com
Orders: nb-customerservice@bio-techne.com
General: novus@novusbio.com

Products Related to NB120-8346

NBP2-33376H	Blue Marker Antibody (6F4-F6) [HRP]
HAF007	Goat anti-Mouse IgG Secondary Antibody [HRP]
NB7539	Goat anti-Mouse IgG (H+L) Secondary Antibody [HRP]
NBP2-27231	Mouse IgG2b Isotype Control (MPC-11)

Limitations

This product is for research use only and is not approved for use in humans or in clinical diagnosis. Primary Antibodies are guaranteed for 1 year from date of receipt.

For more information on our 100% guarantee, please visit www.novusbio.com/guarantee

Earn gift cards/discounts by submitting a review: www.novusbio.com/reviews/submit/NB120-8346

Earn gift cards/discounts by submitting a publication using this product:
www.novusbio.com/publications

