

Product Datasheet

Cytokeratin, pan Antibody (PCK-26) NB120-6401

Unit Size: 0.1 ml

Store at 4C short term. Aliquot and store at -20C long term. Avoid freeze-thaw cycles.

www.novusbio.com



technical@novusbio.com

Reviews: 2 Publications: 13

Protocols, Publications, Related Products, Reviews, Research Tools and Images at:
www.novusbio.com/NB120-6401

Updated 9/9/2025 v.20.1

**Earn rewards for product
reviews and publications.**

Submit a publication at www.novusbio.com/publications

Submit a review at www.novusbio.com/reviews/destination/NB120-6401



NB120-6401

Cytokeratin, pan Antibody (PCK-26)

Product Information	
Unit Size	0.1 ml
Concentration	This product is unpurified. The exact concentration of antibody is not quantifiable.
Storage	Store at 4C short term. Aliquot and store at -20C long term. Avoid freeze-thaw cycles.
Clonality	Monoclonal
Clone	PCK-26
Preservative	0.09% Sodium Azide
Isotype	IgG1
Purity	Unpurified
Buffer	Ascites

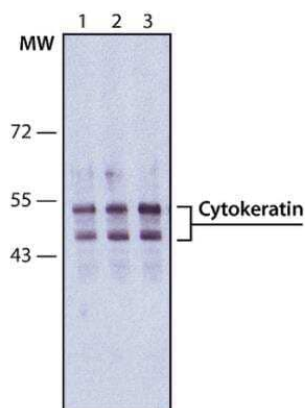
Product Description	
Description	Novus Biologicals Mouse Cytokeratin, pan Antibody (PCK-26) (NB120-6401) is a monoclonal antibody validated for use in IHC, WB and ICC/IF. Anti-Cytokeratin, pan Antibody: Cited in 11 publications. All Novus Biologicals antibodies are covered by our 100% guarantee.
Host	Mouse
Gene ID	3848
Gene Symbol	KRT1
Species	Human, Mouse, Rat, Porcine, Bovine, Canine, Chicken, Equine, Feline, Fish, Guinea Pig, Goat, Hamster, Rabbit, Reptile, Sheep
Reactivity Notes	Use in Equine reported in scientific literature (PMID:34372610) Cross reacts with: carp, lizard, snake. Please note that this antibody is reactive to Mouse and derived from the same host, Mouse. Additional Mouse on Mouse blocking steps may be required for IHC and ICC experiments. Please contact Technical Support for more information.
Marker	Epithelial marker
Specificity/Sensitivity	PCK-26 recognizes the 58 kDa cytokeratin 5, the 56 kDa cytokeratin 6 and the 52 kDa cytokeratin 8 band in immunoblotting (Lane EB et al). The antibody recognizes an epitope located on the Type II cytokeratins 1, 5, 6, and 8. PCK-26 is a broad spectrum antibody which reacts specifically with a variety of normal, reactive, and neoplastic epithelial tissues. The antibody reacts with simple, cornifying, and non-cornifying squamous epithelia and pseudostratified epithelia.
Immunogen	This Cytokeratin, pan Antibody (PCK-26) was developed against the full length native protein (purified) (Human epidermis).

Product Application Details	
Applications	Western Blot, Immunohistochemistry-Paraffin, Immunocytochemistry/Immunofluorescence, Immunohistochemistry, Immunohistochemistry-Frozen
Recommended Dilutions	Western Blot 1:100 - 1:2000, Immunohistochemistry, Immunocytochemistry/Immunofluorescence 1:300, Immunohistochemistry-Paraffin 1:300 - 1:600, Immunohistochemistry-Frozen 1:300 - 1:600

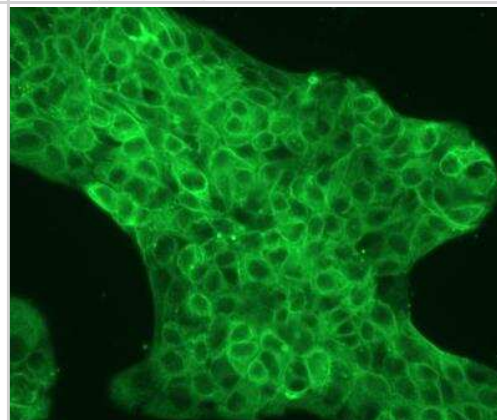


Images

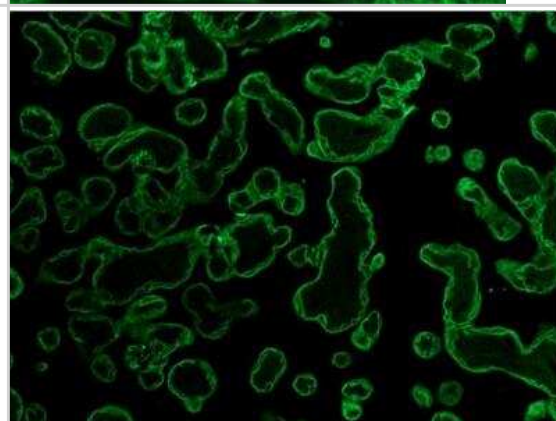
Western Blot: Cytokeratin, pan Antibody (PCK-26) [NB120-6401] - Whole extract of HeLa cells was separated on SDS-PAGE and probed with Monoclonal Anti-Cytokeratin, pan Clone: PCK-26. WB was developed using Goat Anti-Mouse IgG-Peroxidase and a chemiluminescent substrate. Lane 1: Antibody dilution 1:300. Lane 2: Antibody dilution 1:500. Lane 3: Antibody dilution 1:1000.



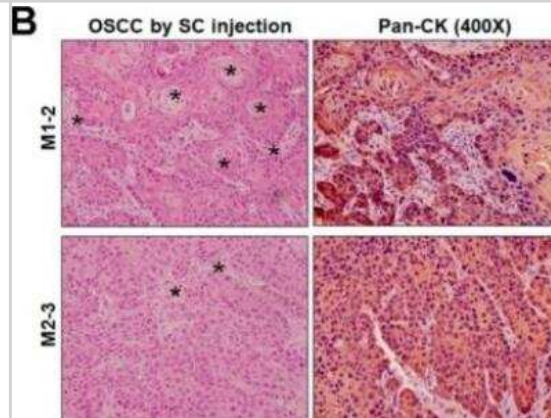
Immunocytochemistry/Immunofluorescence: Cytokeratin, pan Antibody (PCK-26) [NB120-6401] - Human pancreas cancer cells. Antibody at 1:250 dilution. Overnight incubation. No permeabilization. ICC/IF image submitted by a verified customer review.



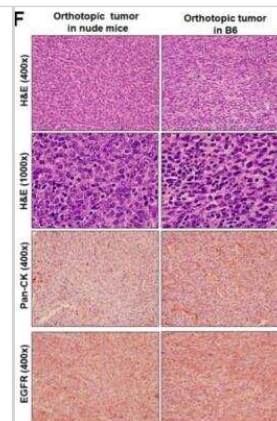
Immunohistochemistry-Paraffin: Cytokeratin, pan Antibody (PCK-26) [NB120-6401] - Staining of FFPE human placenta sections with 1:300 Monoclonal Anti-Cytokeratin, pan Clone: PCK-26, followed by Goat Anti Mouse IgG (Fab)-FITC.



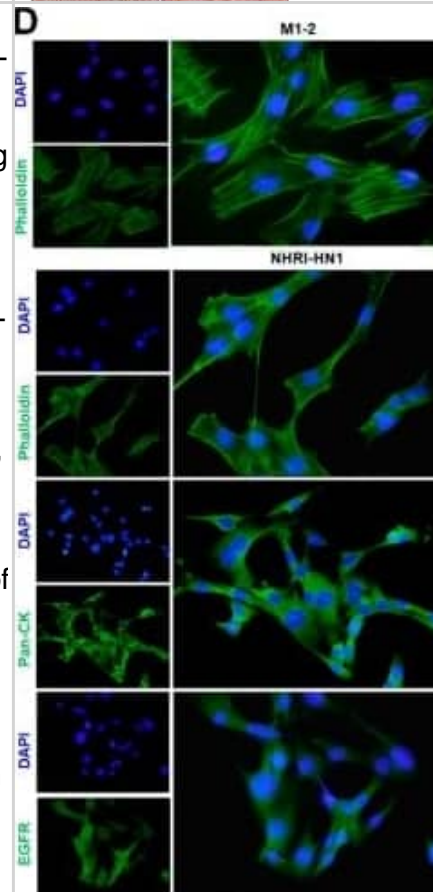
Immunohistochemistry: Cytokeratin, pan Antibody (PCK-26) [NB120-6401] - Histological examination of the subcutaneous xenografts in nude mice with H&E staining (left panel) and IHC with anti-pan CK (right panel) at 400x magnification. Asterisks (*) indicate representative keratinization and keratin-pearl formation. Image collected and cropped by CiteAb from the following publication (mdpi.com/2072-6694/12/1/61), licensed under a CC-BY license.



Immunohistochemistry: Cytokeratin, pan Antibody (PCK-26) [NB120-6401] - Histological examination of NHRI-HN1 tumors in nude mice and B6 mice with H&E staining (upper panels) at 400x and 1000x magnifications and IHC with anti-pan CK (middle panel) and EGFR (lower panel) at 400x magnification. Image collected and cropped by CiteAb from the following publication (mdpi.com/2072-6694/12/1/61), licensed under a CC-BY license.



Immunocytochemistry/ Immunofluorescence: Cytokeratin, pan Antibody (PCK-26) [NB120-6401] - Detection of EMT & increased motility in NHRI-HN1 cells. (A) Summary of the most enriched pathways associated with tumorigenesis in syngeneic mice by comparing tumorigenic NHRI-HN1 cells with nontumorigenic cells, including M1-2, M2-3 & NHRI-HN2, using GSEA analysis. Blue indicates a negative normalized enrichment score (NES) & orange indicates a positive NES. (B) Morphology of M1-2 & NHRI-HN1 cells via phase-contrast microscopy at 100× magnification. (C) Relative adhesion activity in M1-2 & NHRI-HN1 cells, determined by normalizing the mean OD 490 nm value of NHRI-HN1 cells to that of M1-2 cells. (D) Cells stained with Alexa Fluor 488 phalloidin, anti-pan-CK & anti-EGFR antibodies at 400× magnification. (E) Immunoblot analysis of epithelial (E-cadherin, α -catenin & β -catenin), mesenchymal (N-cadherin & Vimentin) proteins & EMT-related transcription factors, including Twist, Snail & Slug in M1-2 & NHRI-HN1 cells. Protein levels were normalized to an internal control, α -tubulin. Ratios were determined by dividing the normalized protein levels in NHRI-HN1 cells by that in M1-2 cells. (F) Representative images (left) & relative data (right) for migration activity of M1-2 & NHRI-HN1 cells. (G) Representative images (left) & relative data (right) for invasion activity of M1-2 & NHRI-HN1 cells at 200× magnification. The relative migration or invasion activity was determined by normalizing the mean number of cells that have migrated or invaded per field of NHRI-HN1 cells to that of M1-2 cells. Error bars represent SE; ** $p < 0.01$; *** $p < 0.001$. Image collected & cropped by CiteAb from the following publication (<https://pubmed.ncbi.nlm.nih.gov/31878324>), licensed under a CC-BY license. Not internally tested by Novus Biologicals.



Publications

Joseph N, Shrestha S, Sassmannshausen I et al. Defining the cellular and molecular features of nerve-invaded cancer cells using a newly characterized experimental model. *Cell Death Discovery* 2025-07-08 [PMID: 40628700]

Dervas E, Michalopoulou E, Hepojoki J et Al. Haemolymphatic tissues of captive boa constrictor (*Boa constrictor*): Morphological features in healthy individuals and with boid inclusion body disease *Dev Comp Immunol* 2024-12-16 [PMID: 39694348]

Andreas P Kourouklis, Julius Kaemmel, Xi Wu, Miguel Baños, Astrid Chanfon, Simone de Brot, Aldo Ferrari, Nikola Cesarovic, Volkmar Falk, Edoardo Mazza Transdermal wires for improved integration in vivo. *Biomaterials advances* 2023-09-01 [PMID: 37591177]

KARAKURT E, DA? S, AKSOY Ö et al. Kedilerin Yass? Hücreli Karsinomlar?nda ?ntermedier Filamentler, p53 Geni, Hücre Proliferasyonu, Metastaz ve Apoptozis Cumhuriyet Üniversitesi Sa?I?k Bilimleri Enstitüsü Dergisi 2023-08-31 (IHC, Feline)

Rosato G, Abril C, Hilbe M, Seehusen F A Combined Approach for Detection of Ovine Small Ruminant Retrovirus Co-Infections *Viruses* 2023-01-28 [PMID: 36851589] (IHC-P, Sheep)

Huo J, Mikolajek H, Bas A et al. A potent SARS-CoV-2 neutralising nanobody shows therapeutic efficacy in the Syrian golden hamster model of COVID-19 *Nat Commun* 2021-09-23 [PMID: 34552091]

Ramsauer A, Wachoski-Dark G, Fraefel C Et Al. Establishment of a Three-Dimensional In Vitro Model of Equine Papillomavirus Type 2 Infection *Viruses* 2021-07-19 [PMID: 34372610] (IHC-P)

Chen YL, Liu KJ, Jang CW et al. ERK Activation Modulates Cancer Stemness and Motility of a Novel Mouse Oral Squamous Cell Carcinoma Cell Line *Cancers (Basel)* 2019-12-24 [PMID: 31878324] (IF/IHC, ICC/IF, Mouse, Human)

Westrich JA, Vermeer DW, Silva A et al. CXCL14 suppresses human papillomavirus-associated head and neck cancer through antigen-specific CD8+ T-cell responses by upregulating MHC-I expression *Oncogene* 2019-08-15 [PMID: 31417179] (ICC/IF, Mouse)

Chung HW, Weng JC, King CE et al. BDNF elevates the axonal levels of hnRNPs Q and R in cultured rat cortical neurons *Mol. Cell. Neurosci.* 2019-06-14 [PMID: 31202892] (WB, Rat)

Tarasco E, Pellegrini G, Whiting L, Lutz TA. Phenotypical heterogeneity in responder (R) and non-responder (NR) male ApoE 3Leiden.CETP mice. *Am. J. Physiol. Gastrointest. Liver Physiol.* 2018-07-05 [PMID: 29975550] (IF/IHC, Mouse)

Dervas E, Hepojoki J, Laimbacher A et al. Nidovirus-Associated Proliferative Pneumonia in the Green Tree Python (*Morelia viridis*) *J. Virol.* 2017-08-09 [PMID: 28794044] (IF/IHC, Reptile)

More publications at <http://www.novusbio.com/NB120-6401>



Novus Biologicals USA

10730 E. Briarwood Avenue
Centennial, CO 80112
USA
Phone: 303.730.1950
Toll Free: 1.888.506.6887
Fax: 303.730.1966
nb-customerservice@bio-techne.com

Bio-Techne Canada

21 Canmotor Ave
Toronto, ON M8Z 4E6
Canada
Phone: 905.827.6400
Toll Free: 855.668.8722
Fax: 905.827.6402
canada.inquires@bio-techne.com

Bio-Techne Ltd

19 Barton Lane
Abingdon Science Park
Abingdon, OX14 3NB, United Kingdom
Phone: (44) (0) 1235 529449
Free Phone: 0800 37 34 15
Fax: (44) (0) 1235 533420
info.EMEA@bio-techne.com

General Contact Information

www.novusbio.com
Technical Support: nb-technical@bio-techne.com
Orders: nb-customerservice@bio-techne.com
General: novus@novusbio.com

Products Related to NB120-6401

NBP2-33376H	Blue Marker Antibody (6F4-F6) [HRP]
HAF007	Goat anti-Mouse IgG Secondary Antibody [HRP]
NB7539	Goat anti-Mouse IgG (H+L) Secondary Antibody [HRP]
NBP1-97005-0.5mg	Mouse IgG1 Isotype Control (MG1)

Limitations

This product is for research use only and is not approved for use in humans or in clinical diagnosis. Primary Antibodies are guaranteed for 1 year from date of receipt.

For more information on our 100% guarantee, please visit www.novusbio.com/guarantee

Earn gift cards/discounts by submitting a review: www.novusbio.com/reviews/submit/NB120-6401

Earn gift cards/discounts by submitting a publication using this product:
www.novusbio.com/publications

