

# Product Datasheet

## RbAp46 Antibody NB120-3535

Unit Size: 100ug

Store at -20C. Avoid freeze-thaw cycles.

[www.novusbio.com](http://www.novusbio.com)



[technical@novusbio.com](mailto:technical@novusbio.com)

### Publications: 4

Protocols, Publications, Related Products, Reviews, Research Tools and Images at:  
[www.novusbio.com/NB120-3535](http://www.novusbio.com/NB120-3535)

Updated 9/9/2025 v.20.1

Earn rewards for product  
reviews and publications.

Submit a publication at [www.novusbio.com/publications](http://www.novusbio.com/publications)

Submit a review at [www.novusbio.com/reviews/destination/NB120-3535](http://www.novusbio.com/reviews/destination/NB120-3535)



**NB120-3535**

RbAp46 Antibody

Product Information	
Unit Size	100ug
Concentration	1 mg/ml
Storage	Store at -20C. Avoid freeze-thaw cycles.
Clonality	Polyclonal
Preservative	0.05% Sodium Azide
Isotype	IgG
Purity	Immunogen affinity purified
Buffer	PBS with 1 mg/ml BSA
Target Molecular Weight	46 kDa

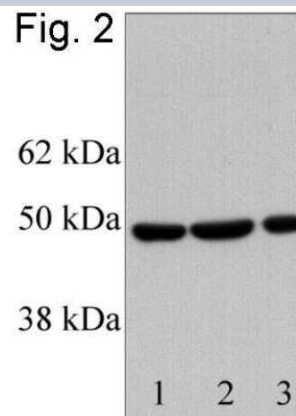
Product Description	
Description	Novus Biologicals Rabbit RbAp46 Antibody (NB120-3535) is a polyclonal antibody validated for use in IHC, WB, ICC/IF and Simple Western. Anti-RbAp46 Antibody: Cited in 4 publications. All Novus Biologicals antibodies are covered by our 100% guarantee.
Host	Rabbit
Gene ID	5931
Gene Symbol	RBBP7
Species	Human, Mouse, Herring
Reactivity Notes	Immunogen displays the following percentage of sequence identity for non-tested species: Chicken (84%). Mouse reactivity reported in scientific literature (PMID: 14645126).
Specificity/Sensitivity	NB120-3535 detects retinoblastoma protein (Rb) associated protein 46 (RbAp46) from human cells.
Immunogen	Synthetic peptide corresponding to residues M(1) A S K E M F E D T V E E(13) C of human RbAp46.

Product Application Details	
Applications	Western Blot, Simple Western, Immunocytochemistry/ Immunofluorescence, Immunohistochemistry
Recommended Dilutions	Western Blot 0.5 ug/ml, Simple Western 1:50, Immunohistochemistry 1.0 ug/ml, Immunocytochemistry/ Immunofluorescence 1:10 - 1:500
Application Notes	See <a href="#">Simple Western Antibody Database</a> for Simple Western validation: Tested in Blood, separated by Size, antibody dilution of 1:50

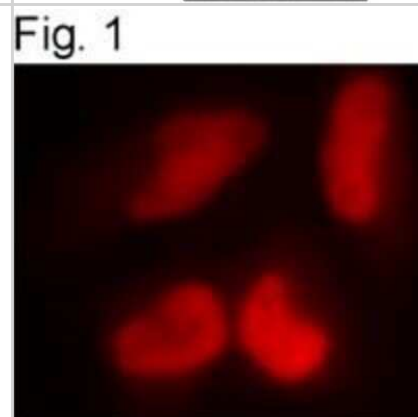


## Images

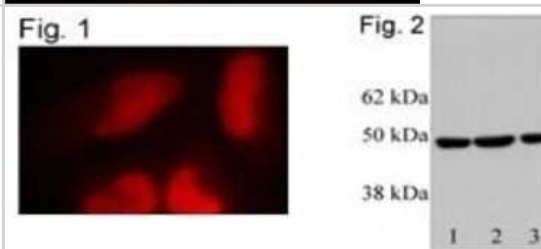
Western Blot: RbAp46 Antibody [NB120-3535] - Analysis of RbAp46 on 1) Du-145 2) LNCaP and 3) Hep-G2 cell extracts.



Immunocytochemistry/Immunofluorescence: RbAp46 Antibody [NB120-3535] - Immunolocalization of RbAp46 in HeLa cells.



Western Blot: RbAp46 Antibody [NB120-3535] - Figure 1: IF of RbAp46 in HeLa cells. Figure 2: WB of RbAp46 on 1) Du-145 2) LNCaP and 3) Hep-G2 cell extracts.



## Publications

Dubey, N, Hoffman, J F Et al. The ESC/E(Z) complex, an effector of response to ovarian steroids, manifests an intrinsic difference in cells from women with premenstrual dysphoric disorder. *Mol Psychiatry* 2017-08-01 [PMID: 28044059] (WB, Human)

Hong Z, Jiang J, Lan L et al. A polycomb group protein, PHF1, is involved in the response to DNA double-strand breaks in human cell. *Nucleic Acids Res.* 2008-04-01 [PMID: 18385154]

Zoltewicz JS, Stewart NJ, Leung R et al. Atrophin 2 recruits histone deacetylase and is required for the function of multiple signaling centers during mouse embryogenesis. *Development.* 2004-01-01 [PMID: 14645126]

Guan LS, Rauchman M, Wang ZY et al. Induction of Rb-associated protein (RbAp46) by Wilms' tumor suppressor WT1 mediates growth inhibition. *J Biol Chem.* 1998-10-01 [PMID: 9765217]



### **Novus Biologicals USA**

10730 E. Briarwood Avenue  
Centennial, CO 80112  
USA  
Phone: 303.730.1950  
Toll Free: 1.888.506.6887  
Fax: 303.730.1966  
nb-customerservice@bio-techne.com

### **Bio-Techne Canada**

21 Canmotor Ave  
Toronto, ON M8Z 4E6  
Canada  
Phone: 905.827.6400  
Toll Free: 855.668.8722  
Fax: 905.827.6402  
canada.inquires@bio-techne.com

### **Bio-Techne Ltd**

19 Barton Lane  
Abingdon Science Park  
Abingdon, OX14 3NB, United Kingdom  
Phone: (44) (0) 1235 529449  
Free Phone: 0800 37 34 15  
Fax: (44) (0) 1235 533420  
info.EMEA@bio-techne.com

### **General Contact Information**

www.novusbio.com  
Technical Support: nb-technical@bio-techne.com  
Orders: nb-customerservice@bio-techne.com  
General: novus@novusbio.com

### **Products Related to NB120-3535**

---

NBP2-33376H	Blue Marker Antibody (6F4-F6) [HRP]
HAF008	Goat anti-Rabbit IgG Secondary Antibody [HRP]
NB7160	Goat anti-Rabbit IgG (H+L) Secondary Antibody [HRP]
NBP2-24891	Rabbit IgG Isotype Control

---

### **Limitations**

This product is for research use only and is not approved for use in humans or in clinical diagnosis. Primary Antibodies are guaranteed for 1 year from date of receipt.

For more information on our 100% guarantee, please visit [www.novusbio.com/guarantee](http://www.novusbio.com/guarantee)

Earn gift cards/discounts by submitting a review: [www.novusbio.com/reviews/submit/NB120-3535](http://www.novusbio.com/reviews/submit/NB120-3535)

Earn gift cards/discounts by submitting a publication using this product:  
[www.novusbio.com/publications](http://www.novusbio.com/publications)

