

Product Datasheet

G protein alpha inhibitor 1/2 Antibody NB120-3522

Unit Size: 100 ug

Store at -20C. Avoid freeze-thaw cycles.

www.novusbio.com



technical@novusbio.com

Protocols, Publications, Related Products, Reviews, Research Tools and Images at:
www.novusbio.com/NB120-3522

Updated 9/9/2025 v.20.1

Earn rewards for product
reviews and publications.

Submit a publication at www.novusbio.com/publications

Submit a review at www.novusbio.com/reviews/destination/NB120-3522



NB120-3522**G protein alpha inhibitor 1/2 Antibody**

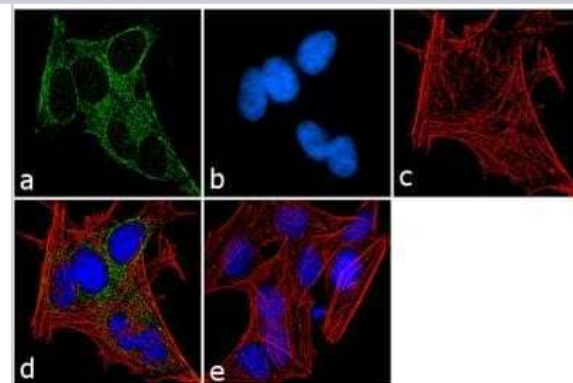
Product Information	
Unit Size	100 ug
Concentration	1 mg/ml
Storage	Store at -20C. Avoid freeze-thaw cycles.
Clonality	Polyclonal
Preservative	0.05% Sodium Azide
Isotype	IgG
Purity	Immunogen affinity purified
Buffer	PBS with 1 mg/ml BSA

Product Description	
Description	Novus Biologicals Rabbit G protein alpha inhibitor 1/2 Antibody (NB120-3522) is a polyclonal antibody validated for use in WB, ICC/IF and IP. All Novus Biologicals antibodies are covered by our 100% guarantee.
Host	Rabbit
Gene ID	2770
Gene Symbol	GNAI1
Species	Human, Mouse, Rat
Reactivity Notes	Expected cross-reactivity with Hydra, Octopus, Spiny Caninefish, Great Pond Snail, Starfish, and American Lobster (100%).
Specificity/Sensitivity	NB120-3522 detects G protein alpha inhibitor 1 (Gene ID: 2770, UniProt: P63096), and G protein alpha inhibitor 2 (Gene ID: 2771, UniProt: P04899) from human, rat, and mouse tissues and cells.
Immunogen	Synthetic peptide corresponding to residues K(346) N N L K D C G L F(355) of human G Protein alpha Inhibitor 1/2.

Product Application Details	
Applications	Western Blot, Immunocytochemistry/ Immunofluorescence, Immunoprecipitation
Recommended Dilutions	Western Blot 1 ug/ml, Immunocytochemistry/ Immunofluorescence, Immunoprecipitation 1:10 - 1:500
Application Notes	WB: Detects an approx. 38 kDa protein representing G protein alpha inhibitor 1/2 from HeLa cell lysate.

Images

Immunofluorescence: G protein alpha inhibitor 1/2 Antibody [NB120-3522] - Analysis of G Protein alpha Inhibitor 1 and 2 was performed using 70% confluent log phase SH-SY5Y cells.





Novus Biologicals USA

10730 E. Briarwood Avenue
Centennial, CO 80112
USA
Phone: 303.730.1950
Toll Free: 1.888.506.6887
Fax: 303.730.1966
nb-customerservice@bio-techne.com

Bio-Techne Canada

21 Canmotor Ave
Toronto, ON M8Z 4E6
Canada
Phone: 905.827.6400
Toll Free: 855.668.8722
Fax: 905.827.6402
canada.inquires@bio-techne.com

Bio-Techne Ltd

19 Barton Lane
Abingdon Science Park
Abingdon, OX14 3NB, United Kingdom
Phone: (44) (0) 1235 529449
Free Phone: 0800 37 34 15
Fax: (44) (0) 1235 533420
info.EMEA@bio-techne.com

General Contact Information

www.novusbio.com
Technical Support: nb-technical@bio-techne.com
Orders: nb-customerservice@bio-techne.com
General: novus@novusbio.com

Products Related to NB120-3522

NBP2-33376H	Blue Marker Antibody (6F4-F6) [HRP]
HAF008	Goat anti-Rabbit IgG Secondary Antibody [HRP]
NB7160	Goat anti-Rabbit IgG (H+L) Secondary Antibody [HRP]
NBP2-24891	Rabbit IgG Isotype Control

Limitations

This product is for research use only and is not approved for use in humans or in clinical diagnosis. Primary Antibodies are guaranteed for 1 year from date of receipt.

For more information on our 100% guarantee, please visit www.novusbio.com/guarantee

Earn gift cards/discounts by submitting a review: www.novusbio.com/reviews/submit/NB120-3522

Earn gift cards/discounts by submitting a publication using this product:
www.novusbio.com/publications

