

Product Datasheet

GRK1 Antibody (D11) - BSA Free NB120-2776

Unit Size: 100ug

Store at -20C. Avoid freeze-thaw cycles.

www.novusbio.com



technical@novusbio.com

Protocols, Publications, Related Products, Reviews, Research Tools and Images at:
www.novusbio.com/NB120-2776

Updated 9/9/2025 v.20.1

Earn rewards for product
reviews and publications.

Submit a publication at www.novusbio.com/publications

Submit a review at www.novusbio.com/reviews/destination/NB120-2776



NB120-2776

GRK1 Antibody (D11) - BSA Free

Product Information	
Unit Size	100ug
Concentration	1 mg/ml
Storage	Store at -20C. Avoid freeze-thaw cycles.
Clonality	Monoclonal
Clone	D11
Preservative	0.05% Sodium Azide
Isotype	IgG1
Purity	Protein G purified
Buffer	PBS

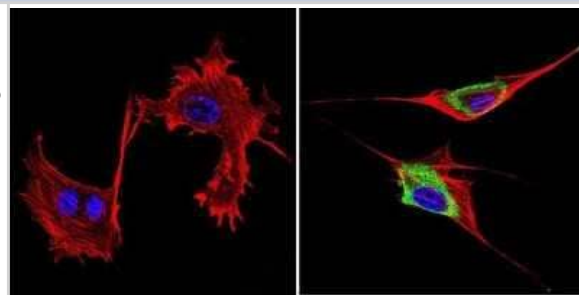
Product Description	
Description	Novus Biologicals Mouse GRK1 Antibody (D11) - BSA Free (NB120-2776) is a monoclonal antibody validated for use in IHC, WB, ICC/IF and IP. All Novus Biologicals antibodies are covered by our 100% guarantee.
Host	Mouse
Gene ID	6011
Gene Symbol	GRK1
Species	Human, Bovine
Specificity/Sensitivity	Detects G-protein-associated rhodopsin kinase 1a/b (GRK1a/b) from human and bovine tissues. This does not cross-react with other G protein-coupled kinases.
Immunogen	Full length human GRK1.

Product Application Details	
Applications	Western Blot, Immunocytochemistry/ Immunofluorescence, Immunohistochemistry, Immunohistochemistry-Frozen, Immunoprecipitation
Recommended Dilutions	Western Blot 1:1000, Immunohistochemistry 1:1000, Immunocytochemistry/ Immunofluorescence 1:20 - 1:200, Immunoprecipitation 1:10 - 1:500, Immunohistochemistry-Frozen 1:1000
Application Notes	WB: Detects an approx. 60 kDa protein representing GRK 1a/b. ab2766 detects both in vitro expressed splice variants by WB but was not able to detect significant amounts of GRK1b from human retina. IF: Staining of GRK1a/b in bovine retina with ab2766 results in intense staining primarily in cone outer segments, but also in rod outer segments. Weak staining is observed in somata and synaptic terminals of cones and inner segments of rods.

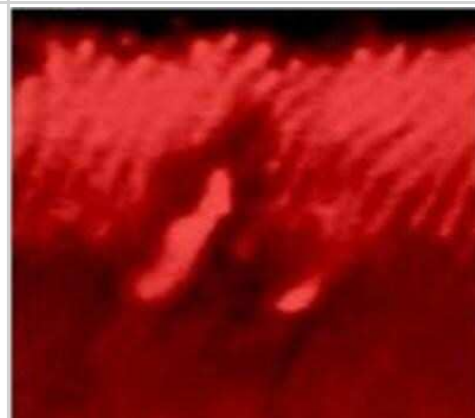


Images

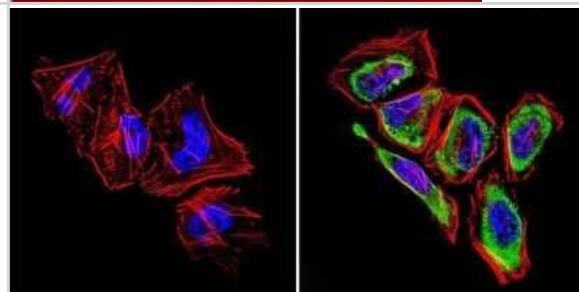
Immunocytochemistry/Immunofluorescence: GRK1 Antibody (D11) [NB120-2776] - Formalin-fixed cells were permeabilized with 0.1% Triton X-100 in TBS for 5-10 minutes at room temperature and blocked with 3% BSA-PBS for 30 minutes at room temperature. Cells were probed with a Rhodopsin Kinase 1a/b Monoclonal Antibody (D11) at a dilution of 1:200 and incubated overnight in a humidified chamber. Cells were washed with PBST and incubated with a DyLight-conjugated secondary antibody for 45 minutes at room temperature in the dark. F-actin (red) was stained with a fluorescent phalloidin and nuclei (blue) were stained with DAPI.



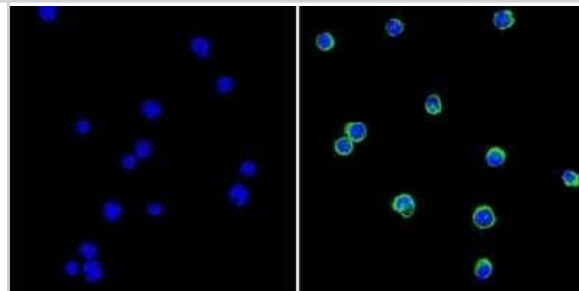
Immunocytochemistry/Immunofluorescence: GRK1 Antibody (D11) [NB120-2776] - Immunolocalization of GRK1a/b in bovine retina



Immunocytochemistry/Immunofluorescence: GRK1 Antibody (D11) [NB120-2776] - Analysis of Rhodopsin Kinase 1a/b (green) in Hela cells. Formalin-fixed cells were permeabilized with 0.1% Triton X-100 in TBS for 5-10 minutes at room temperature and blocked with 3% BSA-PBS for 30 minutes at room temperature. Cells were probed with a Rhodopsin Kinase 1a/b Monoclonal Antibody (D11) at a dilution of 1:200 and incubated overnight in a humidified chamber. Cells were washed with PBST and incubated with a DyLight-conjugated secondary antibody for 45 minutes at room temperature in the dark. F-actin (red) was stained with a fluorescent phalloidin and nuclei (blue) were stained with DAPI. Images were taken at a 60X magnification.



Immunocytochemistry/Immunofluorescence: GRK1 Antibody (D11) [NB120-2776] - Analysis of Rhodopsin Kinase 1a/b (green) in human cells. Formalin-fixed cells were permeabilized with 0.1% Triton X-100 in TBS for 5-10 minutes at room temperature and blocked with 3% BSA-PBS for 30 minutes at room temperature. Cells were probed with a Rhodopsin Kinase 1a/b Monoclonal Antibody (D11) at a dilution of 1:200 and incubated overnight in a humidified chamber. Cells were washed with PBST and incubated with a DyLight-conjugated secondary antibody for 45 minutes at room temperature in the dark. F-actin (red) was stained with a fluorescent phalloidin and nuclei (blue) were stained with DAPI. Images were taken at a 60X magnification.





Novus Biologicals USA

10730 E. Briarwood Avenue
Centennial, CO 80112
USA
Phone: 303.730.1950
Toll Free: 1.888.506.6887
Fax: 303.730.1966
nb-customerservice@bio-techne.com

Bio-Techne Canada

21 Canmotor Ave
Toronto, ON M8Z 4E6
Canada
Phone: 905.827.6400
Toll Free: 855.668.8722
Fax: 905.827.6402
canada.inquires@bio-techne.com

Bio-Techne Ltd

19 Barton Lane
Abingdon Science Park
Abingdon, OX14 3NB, United Kingdom
Phone: (44) (0) 1235 529449
Free Phone: 0800 37 34 15
Fax: (44) (0) 1235 533420
info.EMEA@bio-techne.com

General Contact Information

www.novusbio.com
Technical Support: nb-technical@bio-techne.com
Orders: nb-customerservice@bio-techne.com
General: novus@novusbio.com

Products Related to NB120-2776

NBP2-33376H	Blue Marker Antibody (6F4-F6) [HRP]
HAF007	Goat anti-Mouse IgG Secondary Antibody [HRP]
NB7539	Goat anti-Mouse IgG (H+L) Secondary Antibody [HRP]
NBP1-97005-0.5mg	Mouse IgG1 Isotype Control (MG1)

Limitations

This product is for research use only and is not approved for use in humans or in clinical diagnosis. Primary Antibodies are guaranteed for 1 year from date of receipt.

For more information on our 100% guarantee, please visit www.novusbio.com/guarantee

Earn gift cards/discounts by submitting a review: www.novusbio.com/reviews/submit/NB120-2776

Earn gift cards/discounts by submitting a publication using this product:
www.novusbio.com/publications

