

Product Datasheet

Glut1 Antibody NB120-15309

Unit Size: 0.5 ml

Store at 4C short term. Aliquot and store at -20C long term. Avoid freeze-thaw cycles.

www.novusbio.com



technical@novusbio.com

Protocols, Publications, Related Products, Reviews, Research Tools and Images at:
www.novusbio.com/NB120-15309

Updated 9/9/2025 v.20.1

Earn rewards for product
reviews and publications.

Submit a publication at www.novusbio.com/publications

Submit a review at www.novusbio.com/reviews/destination/NB120-15309



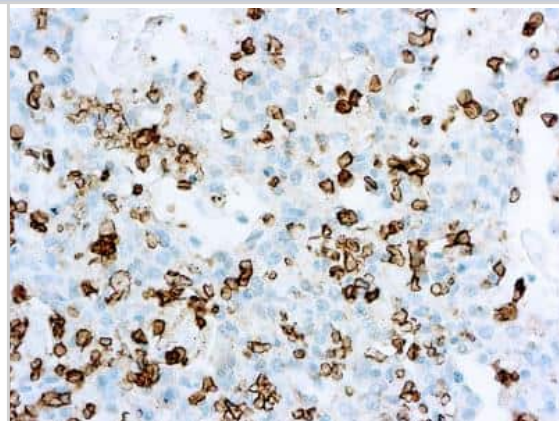
NB120-15309

Glut1 Antibody

Product Information	
Unit Size	0.5 ml
Concentration	0.2 mg/ml
Storage	Store at 4C short term. Aliquot and store at -20C long term. Avoid freeze-thaw cycles.
Clonality	Polyclonal
Preservative	0.05% Sodium Azide
Isotype	IgG
Purity	Affinity purified
Buffer	PBS (pH 7.4), 0.2% BSA, Tween-20
Target Molecular Weight	54.1 kDa
Product Description	
Description	Novus Biologicals Rabbit Glut1 Antibody (NB120-15309) is a polyclonal antibody validated for use in IHC. All Novus Biologicals antibodies are covered by our 100% guarantee.
Host	Rabbit
Gene ID	6513
Gene Symbol	SLC2A1
Species	Human
Marker	Plasma Membrane Marker
Specificity/Sensitivity	This antibody reacts with a 55 kDa protein. Glucose is fundamental to the metabolism of mammalian cells. Several glucose transporter protein (Glut) isoforms have been identified and shown to function in response in insulin and IGF-1 induced signaling. GLUT-1 is detectable in many human tissues including those of the colon, lung, stomach, esophagus and breast. GLUT-1 immunoreactivity in some cancers, including trans-carcinoma of the urinary bladder, has been associated with aggressive behavior.
Immunogen	A synthetic peptide derived from the C-terminal region of human GLUT1.
Product Application Details	
Applications	Immunohistochemistry-Paraffin, Immunohistochemistry
Recommended Dilutions	Immunohistochemistry 1:50 - 1:100, Immunohistochemistry-Paraffin 1:50 - 1:100
Application Notes	IHC-P: recommended pretreatment of citrate buffer, pH 6.0. Recommended incubation time of 30 min at RT.

Images

Immunohistochemistry-Paraffin: Glut1 Antibody [NB120-15309] - Immunohistochemical analysis of formalin fixed paraffin embedded human bladder stained with GLUT-1 antibody (NB120-15309).





Novus Biologicals USA

10730 E. Briarwood Avenue
Centennial, CO 80112
USA
Phone: 303.730.1950
Toll Free: 1.888.506.6887
Fax: 303.730.1966
nb-customerservice@bio-techne.com

Bio-Techne Canada

21 Canmotor Ave
Toronto, ON M8Z 4E6
Canada
Phone: 905.827.6400
Toll Free: 855.668.8722
Fax: 905.827.6402
canada.inquires@bio-techne.com

Bio-Techne Ltd

19 Barton Lane
Abingdon Science Park
Abingdon, OX14 3NB, United Kingdom
Phone: (44) (0) 1235 529449
Free Phone: 0800 37 34 15
Fax: (44) (0) 1235 533420
info.EMEA@bio-techne.com

General Contact Information

www.novusbio.com
Technical Support: nb-technical@bio-techne.com
Orders: nb-customerservice@bio-techne.com
General: novus@novusbio.com

Products Related to NB120-15309

HAF008	Goat anti-Rabbit IgG Secondary Antibody [HRP]
NB7160	Goat anti-Rabbit IgG (H+L) Secondary Antibody [HRP]
NBP2-24891	Rabbit IgG Isotype Control
NB110-39113PEP	Glut1 Antibody Blocking Peptide

Limitations

This product is for research use only and is not approved for use in humans or in clinical diagnosis. Primary Antibodies are guaranteed for 1 year from date of receipt.

For more information on our 100% guarantee, please visit www.novusbio.com/guarantee

Earn gift cards/discounts by submitting a review: www.novusbio.com/reviews/submit/NB120-15309

Earn gift cards/discounts by submitting a publication using this product:
www.novusbio.com/publications

