

Product Datasheet

gamma Tubulin Antibody [Cy3] NB120-11319

Unit Size: 0.1 ml

Store at 4C short term. Aliquot and store at -20C long term. Avoid freeze-thaw cycles.

www.novusbio.com



technical@novusbio.com

Protocols, Publications, Related Products, Reviews, Research Tools and Images at:
www.novusbio.com/NB120-11319

Updated 12/25/2024 v.20.1

Earn rewards for product
reviews and publications.

Submit a publication at www.novusbio.com/publications

Submit a review at www.novusbio.com/reviews/destination/NB120-11319



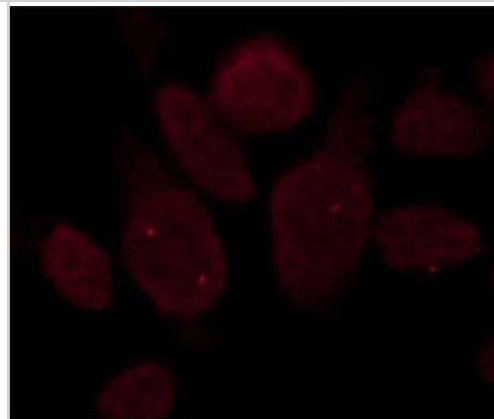
NB120-11319

gamma Tubulin Antibody [Cy3]

Product Information	
Unit Size	0.1 ml
Concentration	Please see the vial label for concentration. If unlisted please contact technical services.
Storage	Store at 4C short term. Aliquot and store at -20C long term. Avoid freeze-thaw cycles.
Clonality	Polyclonal
Preservative	0.09% Sodium Azide
Isotype	IgG
Conjugate	Cy3
Purity	Immunogen affinity purified
Buffer	10 mM PBS (pH 7.4) and 1.0% BSA
Target Molecular Weight	48 kDa
Product Description	
Host	Rabbit
Gene ID	7283
Gene Symbol	TUBG1
Species	Human, Canine, Chicken
Reactivity Notes	The antigen sequence is identical in mouse and rat Gamma-tubulin and highly conserved among species (Drosophila, Aspergillus, and yeast Gamma-tubulin).
Marker	Centrosome Marker
Specificity/Sensitivity	Does not react with alpha, beta, omega and eta Tubulin. The IF testing of this product is performed using chicken fibroblasts. We have not performed IF testing using human cells. This antibody is tested in western blotting using the following cell lysates ; U87, HeLa, Jurkat, C2C12, Rat2, MDCK, and A431.
Immunogen	Synthetic peptide: EEFATEGTDRKDVFFY-K, corresponding to amino acids 38-53 of Human gamma Tubulin.
Product Application Details	
Applications	Immunocytochemistry/ Immunofluorescence
Recommended Dilutions	Immunocytochemistry/ Immunofluorescence 1:10-1:2000
Application Notes	IF: Use at a dilution of 1/200. This concentration was determined by staining of methanol/acetonefixed chicken fibroblast cells. Not tested in other applications. Optimal dilutions/concentrations should be determined by the end user.

Images

Immunocytochemistry/Immunofluorescence: gamma Tubulin Antibody [Cy3] [NB120-11319] - HeLa cells were fixed and permeabilized with methanol followed by acetone. Fixed cells were stained directly with 1:200 Rabbit Anti-gamma Tubulin-Cy3





Novus Biologicals USA

10730 E. Briarwood Avenue
Centennial, CO 80112
USA
Phone: 303.730.1950
Toll Free: 1.888.506.6887
Fax: 303.730.1966
nb-customerservice@bio-techne.com

Bio-Techne Canada

21 Canmotor Ave
Toronto, ON M8Z 4E6
Canada
Phone: 905.827.6400
Toll Free: 855.668.8722
Fax: 905.827.6402
canada.inquires@bio-techne.com

Bio-Techne Ltd

19 Barton Lane
Abingdon Science Park
Abingdon, OX14 3NB, United Kingdom
Phone: (44) (0) 1235 529449
Free Phone: 0800 37 34 15
Fax: (44) (0) 1235 533420
info.EMEA@bio-techne.com

General Contact Information

www.novusbio.com
Technical Support: nb-technical@bio-techne.com
Orders: nb-customerservice@bio-techne.com
General: novus@novusbio.com

Products Related to NB120-11319

NBP1-72534-100ug	Recombinant Human gamma Tubulin His Protein
DY453-05	CXCL1/GRO alpha/KC/CINC-1 [Biotin]
NBL1-17444	gamma Tubulin Overexpression Lysate
MAB1195	beta-III Tubulin Antibody (TuJ-1) [Unconjugated] - Neuron-Specific

Limitations

This product is for research use only and is not approved for use in humans or in clinical diagnosis. Primary Antibodies are guaranteed for 1 year from date of receipt.

For more information on our 100% guarantee, please visit www.novusbio.com/guarantee

Earn gift cards/discounts by submitting a review: www.novusbio.com/reviews/submit/NB120-11319

Earn gift cards/discounts by submitting a publication using this product:
www.novusbio.com/publications

