

# Product Datasheet

## gamma Tubulin Antibody NB120-11318

Unit Size: 0.1 ml

Store at 4C short term. Aliquot and store at -20C long term. Avoid freeze-thaw cycles.

[www.novusbio.com](http://www.novusbio.com)



[technical@novusbio.com](mailto:technical@novusbio.com)

### Publications: 1

Protocols, Publications, Related Products, Reviews, Research Tools and Images at:  
[www.novusbio.com/NB120-11318](http://www.novusbio.com/NB120-11318)

Updated 9/9/2025 v.20.1

Earn rewards for product  
reviews and publications.

Submit a publication at [www.novusbio.com/publications](http://www.novusbio.com/publications)

Submit a review at [www.novusbio.com/reviews/destination/NB120-11318](http://www.novusbio.com/reviews/destination/NB120-11318)



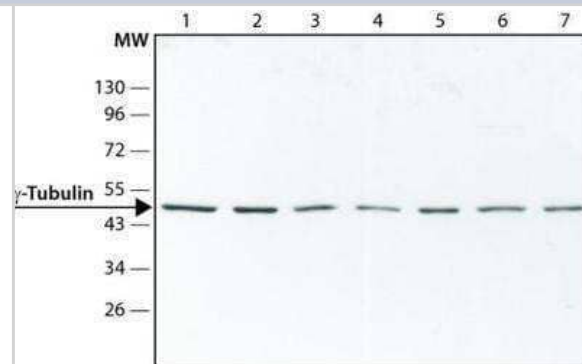
**NB120-11318**

gamma Tubulin Antibody

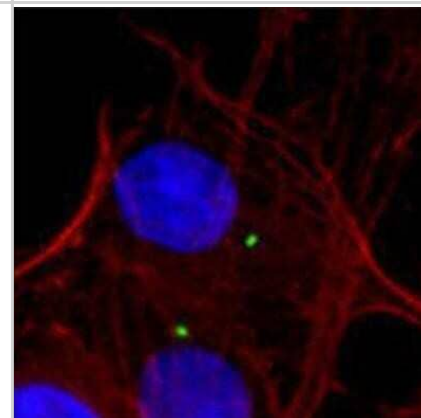
Product Information	
Unit Size	0.1 ml
Concentration	0.7 mg/ml
Storage	Store at 4C short term. Aliquot and store at -20C long term. Avoid freeze-thaw cycles.
Clonality	Polyclonal
Preservative	0.09% Sodium Azide
Isotype	IgG
Purity	Immunogen affinity purified
Buffer	10mM PBS (pH 7.4) and 1.0% BSA
Target Molecular Weight	51 kDa
Product Description	
Description	Novus Biologicals Rabbit gamma Tubulin Antibody (NB120-11318) is a polyclonal antibody validated for use in WB and ICC/IF. Anti-gamma Tubulin Antibody: Cited in 1 publication. All Novus Biologicals antibodies are covered by our 100% guarantee.
Host	Rabbit
Gene ID	7283
Gene Symbol	TUBG1
Species	Human, Canine, Chicken
Reactivity Notes	The antigen sequence is identical in mouse and rat Gamma-tubulin and highly conserved among species (Drosophila, Aspergillus, and yeast Gamma-tubulin).
Marker	Centrosome Marker
Specificity/Sensitivity	Does not react with alpha, beta, omega and eta Tubulin. The IF testing of this product is performed using chicken fibroblasts. We have not performed IF testing using human cells. This antibody is tested in western blotting using the following cell lysates ; U87, HeLa, Jurkat, C2C12, Rat2, MDCK, and A431.
Immunogen	Synthetic peptide: EEFATEGTDRKDVFFY-K, corresponding to amino acids 38-53 of Human gamma Tubulin.
Product Application Details	
Applications	Western Blot, Immunocytochemistry/ Immunofluorescence
Recommended Dilutions	Western Blot 1:1000, Immunocytochemistry/ Immunofluorescence 1:1000

## Images

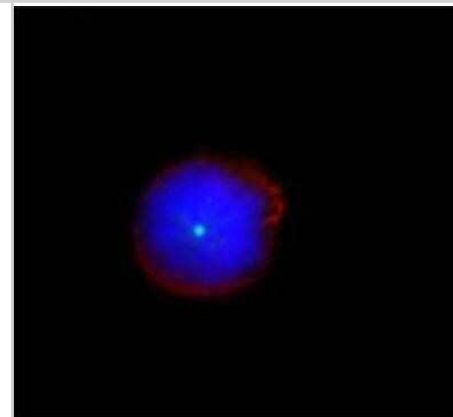
Western Blot: gamma Tubulin Antibody [NB120-11318] - Cell lysates (lanes 1-7) were separated on SDS-PAGE, blotted with 0.7 ug/mL Anti-gamma-Tubulin, and developed using Goat Anti-Rabbit IgG-Peroxidase and a chemiluminescent substrate. Lanes 1. U87; 2. HeLa; 3. Jurkat; 4. C2C12; 5. Rat2; 6. MDCK; 7. A431



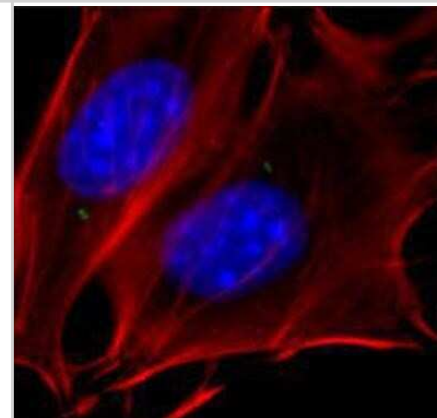
Immunocytochemistry/Immunofluorescence: gamma Tubulin Antibody [NB120-11318] - Centrosomal localization of gamma-tubulin in Rat2 cells. Fixed cells were stained with 0.8 ug/mL Anti-gamma-Tubulin, followed by Goat Anti-Rabbit IgG, Atto448 dye conjugate (x100 magnification). Actin staining with phalloidin rhodamine conjugate. Nuclear staining with DAPI.



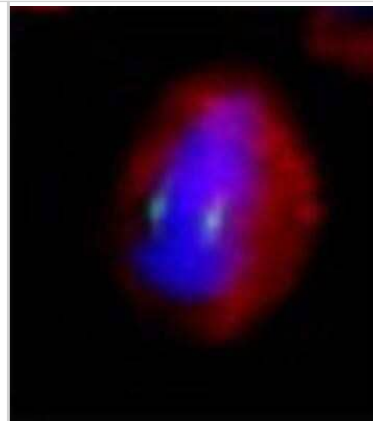
Immunocytochemistry/Immunofluorescence: gamma Tubulin Antibody [NB120-11318] - Centrosomal localization of gamma-tubulin in NIH3T3 cells. Fixed cells were stained with 0.8 ug/mL Anti-gamma-Tubulin, followed by Goat Anti-Rabbit IgG, Atto448 dye conjugate (x100 magnification). Actin staining with phalloidin rhodamine conjugate. Nuclear staining with DAPI.



Immunocytochemistry/Immunofluorescence: gamma Tubulin Antibody [NB120-11318] - Centrosomal localization of gamma-tubulin in NIH3T3 cells. Fixed cells were stained with 0.8 ug/mL Anti-gamma-Tubulin, followed by Goat Anti-Rabbit IgG, Atto448 dye conjugate (x100 magnification). Actin staining with phalloidin rhodamine conjugate. Nuclear staining with DAPI.



Immunocytochemistry/Immunofluorescence: gamma Tubulin Antibody [NB120-11318] - Centrosomal localization of gamma-tubulin in HeLa cells. Fixed cells were stained with 0.8 ug/mL Anti-gamma-Tubulin, followed by Goat Anti-Rabbit IgG, Atto448 dye conjugate (x100 magnification). Actin staining with phalloidin rhodamine conjugate. Nuclear staining with DAPI.



## Publications

Heckler MM, Zeleke TZ, Divekar SD et al. Antimitotic activity of DY131 and the estrogen-related receptor beta 2 (ERRb2) splice variant in breast cancer Oncotarget 2016-07-26 [PMID: 27363015] (ICC/IF, Human)



### **Novus Biologicals USA**

10730 E. Briarwood Avenue  
Centennial, CO 80112  
USA

Phone: 303.730.1950

Toll Free: 1.888.506.6887

Fax: 303.730.1966

[nb-customerservice@bio-techne.com](mailto:nb-customerservice@bio-techne.com)

### **Bio-Techne Canada**

21 Canmotor Ave  
Toronto, ON M8Z 4E6  
Canada

Phone: 905.827.6400

Toll Free: 855.668.8722

Fax: 905.827.6402

[canada.inquires@bio-techne.com](mailto:canada.inquires@bio-techne.com)

### **Bio-Techne Ltd**

19 Barton Lane  
Abingdon Science Park  
Abingdon, OX14 3NB, United Kingdom

Phone: (44) (0) 1235 529449

Free Phone: 0800 37 34 15

Fax: (44) (0) 1235 533420

[info.EMEA@bio-techne.com](mailto:info.EMEA@bio-techne.com)

### **General Contact Information**

[www.novusbio.com](http://www.novusbio.com)

Technical Support: [nb-technical@bio-techne.com](mailto:nb-technical@bio-techne.com)

Orders: [nb-customerservice@bio-techne.com](mailto:nb-customerservice@bio-techne.com)

General: [novus@novusbio.com](mailto:novus@novusbio.com)

### **Products Related to NB120-11318**

---

NBP2-33376H	Blue Marker Antibody (6F4-F6) [HRP]
HAF008	Goat anti-Rabbit IgG Secondary Antibody [HRP]
NB7160	Goat anti-Rabbit IgG (H+L) Secondary Antibody [HRP]
NBP2-24891	Rabbit IgG Isotype Control

---

### **Limitations**

This product is for research use only and is not approved for use in humans or in clinical diagnosis. Primary Antibodies are guaranteed for 1 year from date of receipt.

For more information on our 100% guarantee, please visit [www.novusbio.com/guarantee](http://www.novusbio.com/guarantee)

Earn gift cards/discounts by submitting a review: [www.novusbio.com/reviews/submit/NB120-11318](http://www.novusbio.com/reviews/submit/NB120-11318)

Earn gift cards/discounts by submitting a publication using this product:  
[www.novusbio.com/publications](http://www.novusbio.com/publications)

