

Product Datasheet

beta Tubulin Antibody (SAP.4G5) NB120-11312

Unit Size: 0.1 ml

Store at 4C short term. Aliquot and store at -20C long term. Avoid freeze-thaw cycles.

www.novusbio.com



technical@novusbio.com

Publications: 2

Protocols, Publications, Related Products, Reviews, Research Tools and Images at:
www.novusbio.com/NB120-11312

Updated 9/9/2025 v.20.1

Earn rewards for product
reviews and publications.

Submit a publication at www.novusbio.com/publications

Submit a review at www.novusbio.com/reviews/destination/NB120-11312



NB120-11312

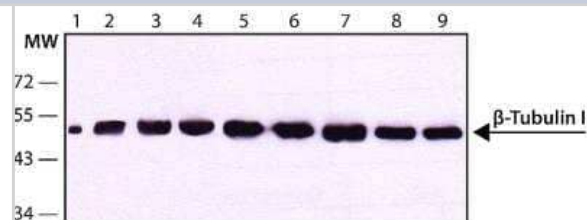
beta Tubulin Antibody (SAP.4G5)

Product Information	
Unit Size	0.1 ml
Concentration	This product is unpurified. The exact concentration of antibody is not quantifiable.
Storage	Store at 4C short term. Aliquot and store at -20C long term. Avoid freeze-thaw cycles.
Clonality	Monoclonal
Clone	SAP.4G5
Preservative	0.09% Sodium Azide
Isotype	IgG1
Purity	Unpurified
Buffer	Raw ascites
Product Description	
Description	Novus Biologicals Mouse beta Tubulin Antibody (SAP.4G5) (NB120-11312) is a monoclonal antibody validated for use in IHC, WB, ELISA, ICC/IF, Simple Western and IP. Anti-beta Tubulin Antibody: Cited in 2 publications. All Novus Biologicals antibodies are covered by our 100% guarantee.
Host	Mouse
Gene ID	203068
Gene Symbol	TUBB
Species	Human, Mouse, Rat, Bovine, Canine, Chicken, Xenopus
Reactivity Notes	Cross-reacts with Human, Mouse, Rat, Xenopus laevis, Cow, Chicken and Dog. Not yet tested in other species. Please note that this antibody is reactive to Mouse and derived from the same host, Mouse. Additional Mouse on Mouse blocking steps may be required for IHC and ICC experiments. Please contact Technical Support for more information.
Specificity/Sensitivity	No reactivity with other tubulin isotypes is observed.
Immunogen	Synthetic peptide corresponding to the C-terminal sequence of beta-tubulin isotype I (Uniprot: P07437), conjugated to BSA
Product Application Details	
Applications	Western Blot, Simple Western, Immunohistochemistry-Paraffin, ELISA, Immunocytochemistry/ Immunofluorescence, Immunohistochemistry, Immunoprecipitation, Microarray
Recommended Dilutions	Western Blot 1:20000, Simple Western, ELISA 1:100-1:2000, Immunohistochemistry 1:10-1:500, Immunocytochemistry/ Immunofluorescence 1:10-1:500, Immunoprecipitation, Immunohistochemistry-Paraffin 1:10-1:500, Microarray
Application Notes	ICC: Use (methanolacetone and 3% paraformaldehyde-0.5% Triton-x-100 fixations). IHC: Use 10% neutral buffered formalin-alcoholic formalin-xylene, paraffin-embedded. WB: Predicted molecular weight: 55kDa.

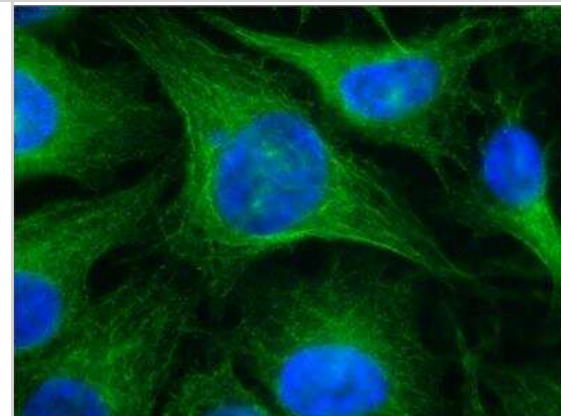


Images

Western Blot: beta Tubulin Antibody (SAP.4G5) [NB120-11312] - Cell line lysates were separated on SDS-PAGE and probed with Monoclonal Anti-beta-Tubulin I antibody Clone: SAP.4G5. The antibody was developed using Goat Anti-Mouse IgG-Peroxidase and a chemiluminescent substrate. Lanes: 1.) Chicken Fibroblasts, 2.) Mouse brain extract I, 3.) Mouse brain extract II, 4.) Rat brain, 5.) Jurkat, 6.) Daudi, 7.) SK-Mel-28, 8.) G361, 9.) HeLa



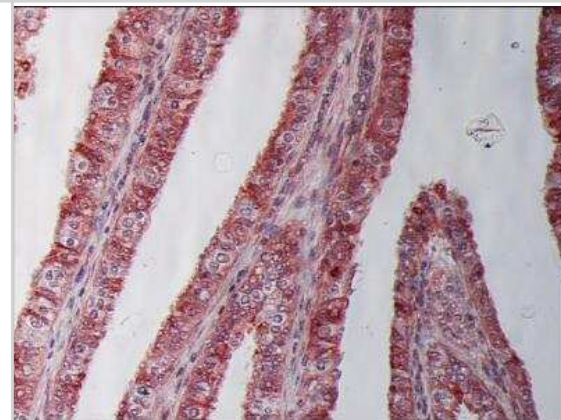
Immunocytochemistry/Immunofluorescence: beta Tubulin Antibody (SAP.4G5) [NB120-11312] - HeLa cells were fixed and permeabilized with 4% paraformaldehyde followed by 0.5% Triton(TM) X-100. Fixed cells were stained with Monoclonal Anti-beta-Tubulin I antibody Clone: SAP.4G5. The antibody was developed using Goat Anti-Mouse IgG, Atto-488 conjugate. Cells were counterstained with DAPI (blue) to stain nuclei.



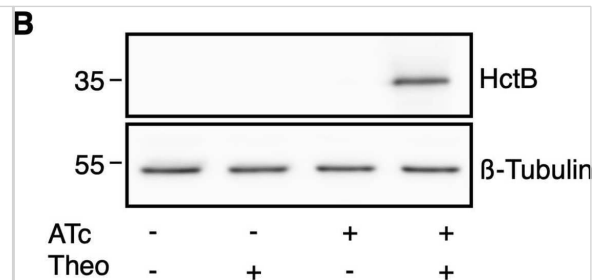
Immunohistochemistry-Paraffin: beta Tubulin Antibody (SAP.4G5) [NB120-11312] - Staining of formalin-fixed, paraffin-embedded human testis sections with Monoclonal Anti-beta-Tubulin I, Clone: SAP.4G5 using biotin/ExtrAvidin(R)-Peroxidase.



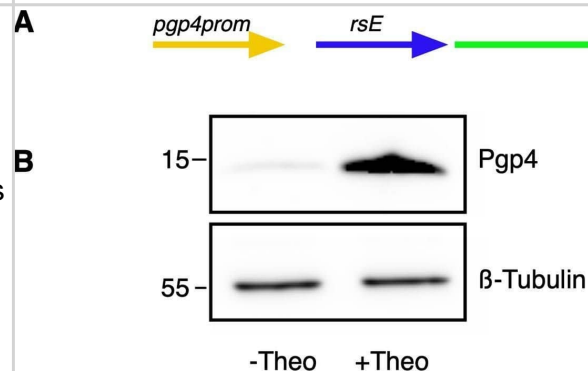
Immunohistochemistry-Paraffin: beta Tubulin Antibody (SAP.4G5) [NB120-11312] - Staining of formalin-fixed, paraffin-embedded human fallopian tube sections with Monoclonal Anti-beta-Tubulin I, Clone: SAP.4G5 using biotin/ExtrAvidin(R)-Peroxidase.



Characterization of p2TK2-SW2-Tet-J-E-hctB-flag. A) Schematic of the Te-riboJ-E-hctB-flag construct. HctB expression is controlled by an aTc inducible promoter, riboJ insulator and the riboE riboswitch. B) Anti-flag western blot of Cos-7 cells infected with L2-Tet-J-E-hctB-flag comparing expression of theophylline treated and untreated cultures. Cells were induced with 0.5 mM theophylline, 30ng/ml aTc, both aTc and theophylline or vehicle only at 16 hpi and proteins were harvested at 30 hpi. HctB-flag expression was only detected in the samples induced with both aTc and theophylline. C) Confocal micrographs of Cos-7 cells infected with L2-Tet-riboJ-E-hctB-flag, induced with 0.5 mM theophylline, 30ng/ml aTc, both aTc and theophylline or vehicle only at 16 hpi and fixed and stained with DAPI (blue) for confocal microscopy at 30 hpi. The flag tag was stained with a primary antibody to the flag and an alexa 488 anti-mouse secondary antibody (green). Size bar = 10 μ m. D) Production of infectious progeny was determined using a reinfection assay. Cos-7 cells were infected with L2-Tet-J-E-hctB-flag and the production of infectious progeny was determined at 48 hpi after induction with 0.5 mM theophylline, 30ng/ml aTc, both aTc and theophylline or vehicle only at 16 hpi. Asterisks denote p-values < 0.05. Error bars = SEM. Image collected and cropped by CiteAb from the following open publication (<https://pubmed.ncbi.nlm.nih.gov/35085261>), licensed under a CC-BY license. Not internally tested by Novus Biologicals.



Characterization of p2TK2-SW2-nprom-E-pgp4-flag. A) Schematic of the nprom-E-pgp4-flag construct consisting of the native *pgp4* promoter, the *riboE* riboswitch (*rsE*), and the *pgp4* ORF with an inframe 3x flag tag. B) Anti-flag western blot of Cos-7 cells infected with L2-nprom-E-pgp4-flag comparing expression of theophylline treated and untreated cultures. Cells were induced or not with 0.5mM theophylline at 16 hpi and proteins were harvested at 30 hpi. A β -tubulin I western blot served as a loading control. C) Confocal micrographs of Cos-7 cells infected with L2-nprom-E-pgp4-flag, induced or not with 0.5 mM theophylline at 16 hpi and fixed and stained with DAPI to detect DNA. The flag tag was detected using a primary antibody to the tag and an alexa 488 anti-mouse secondary antibody (green). Size bar = 10 μ m. D) Cos-7 cells were infected with L2-nprom-E-pgp4-flag and the production of infectious progeny was determined at 48 hpi after 0.5 mM theophylline induction or vehicle only. E) Iodine staining of glycogen in the inclusion of Cos-7 cells infected with L2-nprom-E-pgp4-flag after 0.5 mM theophylline induction at 16 hpi or vehicle only. Arrows indicate the location of the chlamydial inclusions. Asterisk denotes p-value < 0.05. Error bars = SEM. Image collected and cropped by CiteAb from the following open publication (<https://pubmed.ncbi.nlm.nih.gov/35085261>), licensed under a CC-BY license. Not internally tested by Novus Biologicals.



Publications

Elazar N, Vainshtein A, Golan N, Vijayaragavan B et al. Axoglial Adhesion by Cadm4 Regulates CNS Myelination Neuron 2018-12-16 [PMID: 30551998]

Hausrat TJ, Radwitz J, Lombino FL et al. Alpha- and beta-tubulin isoforms are differentially expressed during brain development Dev Neurobiol 2020-04-15 [PMID: 32293117] (WB, Human)



Novus Biologicals USA

10730 E. Briarwood Avenue
Centennial, CO 80112
USA
Phone: 303.730.1950
Toll Free: 1.888.506.6887
Fax: 303.730.1966
nb-customerservice@bio-techne.com

Bio-Techne Canada

21 Canmotor Ave
Toronto, ON M8Z 4E6
Canada
Phone: 905.827.6400
Toll Free: 855.668.8722
Fax: 905.827.6402
canada.inquires@bio-techne.com

Bio-Techne Ltd

19 Barton Lane
Abingdon Science Park
Abingdon, OX14 3NB, United Kingdom
Phone: (44) (0) 1235 529449
Free Phone: 0800 37 34 15
Fax: (44) (0) 1235 533420
info.EMEA@bio-techne.com

General Contact Information

www.novusbio.com
Technical Support: nb-technical@bio-techne.com
Orders: nb-customerservice@bio-techne.com
General: novus@novusbio.com

Products Related to NB120-11312

NBL1-17436	beta I Tubulin Overexpression Lysate
NBP2-33376H	Blue Marker Antibody (6F4-F6) [HRP]
HAF007	Goat anti-Mouse IgG Secondary Antibody [HRP]
NB7539	Goat anti-Mouse IgG (H+L) Secondary Antibody [HRP]
NBP1-97005-0.5mg	Mouse IgG1 Isotype Control (MG1)

Limitations

This product is for research use only and is not approved for use in humans or in clinical diagnosis. Primary Antibodies are guaranteed for 1 year from date of receipt.

For more information on our 100% guarantee, please visit www.novusbio.com/guarantee

Earn gift cards/discounts by submitting a review: www.novusbio.com/reviews/submit/NB120-11312

Earn gift cards/discounts by submitting a publication using this product:
www.novusbio.com/publications

