

Product Datasheet

TOMM22 Antibody (1C9-2)

NB120-10436

Unit Size: 0.05 ml

Store at -20C. Avoid freeze-thaw cycles.

www.novusbio.com



technical@novusbio.com

Reviews: 1

Protocols, Publications, Related Products, Reviews, Research Tools and Images at:
www.novusbio.com/NB120-10436

Updated 9/9/2025 v.20.1

Earn rewards for product reviews and publications.

Submit a publication at www.novusbio.com/publications

Submit a review at www.novusbio.com/reviews/destination/NB120-10436



NB120-10436

TOMM22 Antibody (1C9-2)

Product Information	
Unit Size	0.05 ml
Concentration	1.0 mg/ml
Storage	Store at -20C. Avoid freeze-thaw cycles.
Clonality	Monoclonal
Clone	1C9-2
Preservative	0.09% Sodium Azide
Isotype	IgG1
Purity	Protein A or G purified
Buffer	10mM PBS (pH 7.4) and 1.0% BSA
Target Molecular Weight	22 kDa

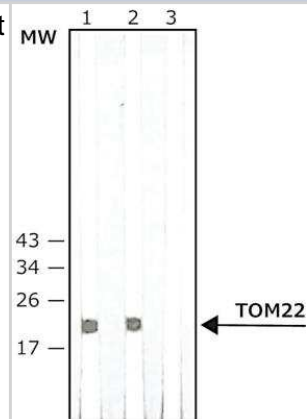
Product Description	
Description	Novus Biologicals Mouse TOMM22 Antibody (1C9-2) (NB120-10436) is a monoclonal antibody validated for use in WB and ICC/IF. All Novus Biologicals antibodies are covered by our 100% guarantee.
Host	Mouse
Gene ID	56993
Gene Symbol	TOMM22
Species	Human, Primate, Mouse (Negative), Rat (Negative)
Reactivity Notes	Cross-reacts with Human and Monkey. Not yet tested in other species. Should not react with rodent.
Specificity/Sensitivity	TOMM22 (1C9-2)
Immunogen	Membrane fraction from Vero (monkey kidney-derived) cells. Uniprot accession no. Q9NS69.

Product Application Details	
Applications	Western Blot, Immunocytochemistry/ Immunofluorescence
Recommended Dilutions	Western Blot 0.5 - 1.0 ug/ml, Immunocytochemistry/ Immunofluorescence 1:10-1:2000
Application Notes	ICC: Use at an assay dependent dilution. Western Blot: Use at a concentration of 0.5 - 1.0 ug/ml. Detects a band of approximately 22 kDa. Optimal dilutions/concentrations should be determined by the end user.



Images

Western Blot: TOMM22 Antibody (1C9-2) [NB120-10436] - Whole extract of cultured Human lymphoma Raji cells were separated on SDS-PAGE and probed with Anti-TOM22 antibody, Mouse Monoclonal, Clone: 1C9-2. The antibody was developed using 1:10,000 Anti-Mouse IgG (Fab specific)-Peroxidase antibody produced in Goat. Lanes: 1. 0.5 ug/mL antibody 2. 1 ug/mL antibody 3. Negative Control





Novus Biologicals USA

10730 E. Briarwood Avenue
Centennial, CO 80112
USA
Phone: 303.730.1950
Toll Free: 1.888.506.6887
Fax: 303.730.1966
nb-customerservice@bio-techne.com

Bio-Techne Canada

21 Canmotor Ave
Toronto, ON M8Z 4E6
Canada
Phone: 905.827.6400
Toll Free: 855.668.8722
Fax: 905.827.6402
canada.inquires@bio-techne.com

Bio-Techne Ltd

19 Barton Lane
Abingdon Science Park
Abingdon, OX14 3NB, United Kingdom
Phone: (44) (0) 1235 529449
Free Phone: 0800 37 34 15
Fax: (44) (0) 1235 533420
info.EMEA@bio-techne.com

General Contact Information

www.novusbio.com
Technical Support: nb-technical@bio-techne.com
Orders: nb-customerservice@bio-techne.com
General: novus@novusbio.com

Products Related to NB120-10436

NB820-59466	Raji Whole Cell Lysate
NBP2-33376H	Blue Marker Antibody (6F4-F6) [HRP]
HAF007	Goat anti-Mouse IgG Secondary Antibody [HRP]
NB7539	Goat anti-Mouse IgG (H+L) Secondary Antibody [HRP]
NBP1-97005-0.5mg	Mouse IgG1 Isotype Control (MG1)

Limitations

This product is for research use only and is not approved for use in humans or in clinical diagnosis. Primary Antibodies are guaranteed for 1 year from date of receipt.

For more information on our 100% guarantee, please visit www.novusbio.com/guarantee

Earn gift cards/discounts by submitting a review: www.novusbio.com/reviews/submit/NB120-10436

Earn gift cards/discounts by submitting a publication using this product:
www.novusbio.com/publications

