

Product Datasheet

ERK1/2 Antibody - BSA Free

NB110-96887

Unit Size: 0.1 ml

Store at 4C short term. Aliquot and store at -20C long term. Avoid freeze-thaw cycles.

www.novusbio.com



technical@novusbio.com

Publications: 2

Protocols, Publications, Related Products, Reviews, Research Tools and Images at:
www.novusbio.com/NB110-96887

Updated 9/9/2025 v.20.1

Earn rewards for product
reviews and publications.

Submit a publication at www.novusbio.com/publications

Submit a review at www.novusbio.com/reviews/destination/NB110-96887



NB110-96887

ERK1/2 Antibody - BSA Free

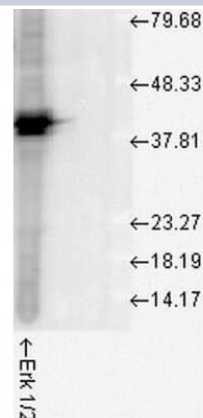
Product Information	
Unit Size	0.1 ml
Concentration	1 mg/ml
Storage	Store at 4C short term. Aliquot and store at -20C long term. Avoid freeze-thaw cycles.
Clonality	Polyclonal
Preservative	0.09% Sodium Azide
Isotype	IgG
Purity	Peptide affinity purified
Buffer	PBS (pH 7.4), 50% Glycerol
Target Molecular Weight	43 kDa

Product Description	
Description	Novus Biologicals Rabbit ERK1/2 Antibody - BSA Free (NB110-96887) is a polyclonal antibody validated for use in IHC, WB, Flow and ICC/IF. Anti-ERK1/2 Antibody: Cited in 2 publications. All Novus Biologicals antibodies are covered by our 100% guarantee.
Host	Rabbit
Gene ID	5595
Gene Symbol	MAPK3
Species	Human, Mouse, Rat, Bovine, Chicken, Drosophila, Sheep, Xenopus
Specificity/Sensitivity	Detects approx 44kda (ERK1) and approx 42kDa (ERK2).
Immunogen	A 35 residue synthetic peptide, corresponding to Erk1 MAP kinase with the CGG spacer group added and the peptide coupled to KLH.

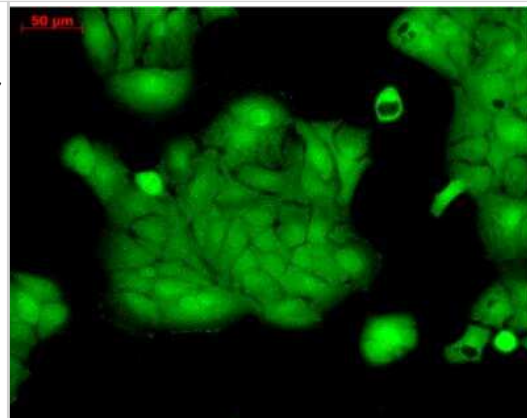
Product Application Details	
Applications	Western Blot, Immunohistochemistry-Paraffin, Flow Cytometry, Immunocytochemistry/ Immunofluorescence, Immunohistochemistry
Recommended Dilutions	Western Blot 1:1000, Flow Cytometry 1:100, Immunohistochemistry 1:100, Immunocytochemistry/ Immunofluorescence 1:100, Immunohistochemistry-Paraffin 1:100
Application Notes	A 1:1000 dilution of Erk1/2 Antibody was sufficient for detection of ERK1/2 in 20 ug of HeLa cell lysate by ECL immunoblot analysis.

Images

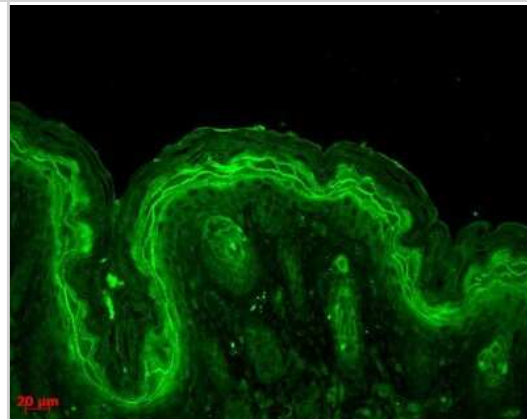
Western Blot: ERK1/2 Antibody [NB110-96887] - Western blot analysis of Human Cell line lysates showing detection of ERK1/2 protein using Rabbit Anti-ERK1/2 Polyclonal Antibody (NB110-96887). Load: 15 ugprotein. Block: 1.5% BSA for 30 minutes at RT. Primary Antibody: Rabbit Anti-ERK1/2 Polyclonal Antibody (NB110-96887) at 1:1000 for 2 hours at RT. Secondary Antibody: Donkey Anti-Rabbit IgG: HRP for 1 hour at RT.



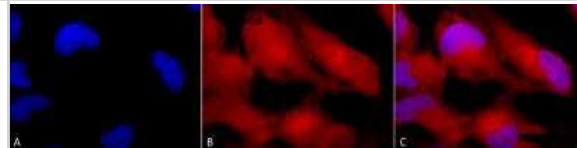
Immunocytochemistry/Immunofluorescence: ERK1/2 Antibody [NB110-96887] - Analysis using Rabbit Anti-ERK1 Polyclonal Antibody. Tissue: HaCaT cells. Species: Human. Fixation: Cold 100% methanol at -20C for 10 minutes. Primary Antibody: Rabbit Anti-ERK1 Polyclonal Antibody at 1:100 for 12 hours at 4 degrees C. Secondary Antibody: FITC Goat Anti-Rabbit at 1:50 for 1-2 hours at RT in dark. Localization: Cytoplasm. Nucleus.



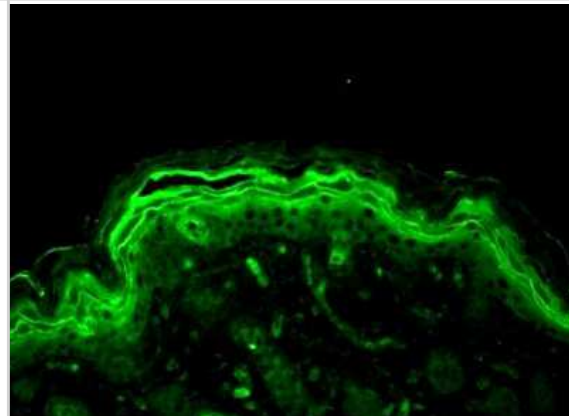
Immunohistochemistry: ERK1/2 Antibody [NB110-96887] - Immunohistochemistry analysis using Rabbit Anti-ERK1/2 Polyclonal Antibody (NB110-96887). Tissue: backskin. Species: Mouse. Fixation: Bouin's Fixative Solution. Primary Antibody: Rabbit Anti-ERK1/2 Polyclonal Antibody (NB110-96887) at 1:100 for 1 hour at RT. Secondary Antibody: FITC Goat Anti-Rabbit (green) at 1:50 for 1 hour at RT. Localization: Cytoplasm.



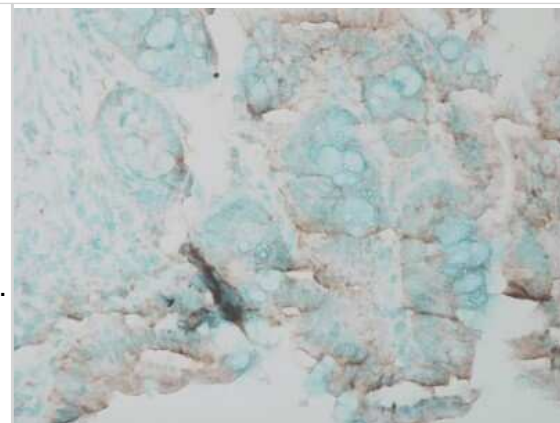
Immunocytochemistry/Immunofluorescence: ERK1/2 Antibody [NB110-96887] - Tissue: HeLa Cells. Species: Human. Fixation: 2% Formaldehyde for 20 min at RT. Primary Antibody: Rabbit Anti-Erk1/2 Polyclonal Antibody at 1:100 for 12 hours at 4 degrees C. Secondary Antibody: APC Goat Anti-Rabbit (red) at 1:200 for 2 hours at RT. Counterstain: DAPI (blue) nuclear stain at 1:40000 for 2 hours at RT. Localization: Cytoplasm. Nucleus. Magnification: 100x. (A) DAPI (blue) nuclear stain. (B) Anti-Erk1/2 Antibody. (C) Composite. Nucleus. Magnification: 100x. (A) DAPI (blue) nuclear stain. (B) Anti-Erk1/2 Antibody. (C) Composite.



Immunohistochemistry-Paraffin: ERK1/2 Antibody [NB110-96887] - Bouin's fixed paraffin embedded backskin sections of transgenic mice. Courtesy of Dr. Turksen, Ottawa Hospital Research Institute, Canada.



Immunohistochemistry: ERK1/2 Antibody [NB110-96887] - Immunohistochemistry analysis using Rabbit Anti-ERK1/2 Polyclonal Antibody (NB110-96887). Tissue: Inflamed colon. Species: Mouse. Fixation: Formalin. Primary Antibody: Rabbit Anti-ERK1/2 Polyclonal Antibody (NB110-96887) at 1:25000 for 12 hours at 4C. Secondary Antibody: Biotin Goat Anti-Rabbit at 1:2000 for 1 hour at RT. Counterstain: Methyl Green at 200uL for 2 min at RT. This image was produced using an amplifying IHC wash buffer. The antibody has therefore been diluted more than is recommended for other applications..



Publications

Zhang W, Gong P, Tian Q et al. The eIF4A Inhibitor Silvestrol Blocks the Growth of Human Glioblastoma Cells by Inhibiting AKT/mTOR and ERK1/2 Signaling Pathway Journal of Oncology 2022-05-30 [PMID: 35677890] (Block/Neutralize)

Paese CLB, Chang CF, Kristekova D, Brugmann SA Pharmacological intervention of the FGF-PTH axis as a potential therapeutic for craniofacial ciliopathies Disease models & mechanisms 2022-07-12 [PMID: 35818799] (WB, Human)



Novus Biologicals USA

10730 E. Briarwood Avenue
Centennial, CO 80112
USA
Phone: 303.730.1950
Toll Free: 1.888.506.6887
Fax: 303.730.1966
nb-customerservice@bio-techne.com

Bio-Techne Canada

21 Canmotor Ave
Toronto, ON M8Z 4E6
Canada
Phone: 905.827.6400
Toll Free: 855.668.8722
Fax: 905.827.6402
canada.inquires@bio-techne.com

Bio-Techne Ltd

19 Barton Lane
Abingdon Science Park
Abingdon, OX14 3NB, United Kingdom
Phone: (44) (0) 1235 529449
Free Phone: 0800 37 34 15
Fax: (44) (0) 1235 533420
info.EMEA@bio-techne.com

General Contact Information

www.novusbio.com
Technical Support: nb-technical@bio-techne.com
Orders: nb-customerservice@bio-techne.com
General: novus@novusbio.com

Products Related to NB110-96887

NBP2-33376H	Blue Marker Antibody (6F4-F6) [HRP]
HAF008	Goat anti-Rabbit IgG Secondary Antibody [HRP]
NB7160	Goat anti-Rabbit IgG (H+L) Secondary Antibody [HRP]
NBP2-24891	Rabbit IgG Isotype Control

Limitations

This product is for research use only and is not approved for use in humans or in clinical diagnosis. Primary Antibodies are guaranteed for 1 year from date of receipt.

For more information on our 100% guarantee, please visit www.novusbio.com/guarantee

Earn gift cards/discounts by submitting a review: www.novusbio.com/reviews/submit/NB110-96887

Earn gift cards/discounts by submitting a publication using this product:
www.novusbio.com/publications

