

Product Datasheet

Apolipoprotein E/ApoE Antibody (WUE-4) [FITC] NB110-60531F

Unit Size: 0.1 ml

Store at 4C in the dark.

www.novusbio.com



technical@novusbio.com

Publications: 1

Protocols, Publications, Related Products, Reviews, Research Tools and Images at:
www.novusbio.com/NB110-60531F

Updated 10/23/2024 v.20.1

Earn rewards for product
reviews and publications.

Submit a publication at www.novusbio.com/publications

Submit a review at www.novusbio.com/reviews/destination/NB110-60531F



NB110-60531F

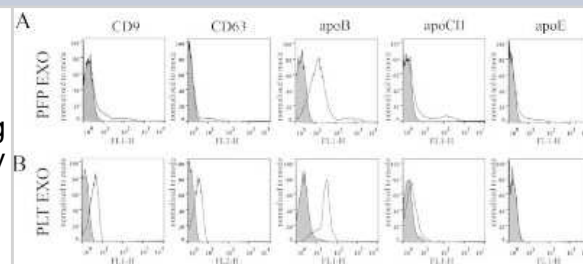
Apolipoprotein E/ApoE Antibody (WUE-4) [FITC]

Product Information	
Unit Size	0.1 ml
Concentration	Please see the vial label for concentration. If unlisted please contact technical services.
Storage	Store at 4C in the dark.
Clonality	Monoclonal
Clone	WUE-4
Preservative	0.05% Sodium Azide
Isotype	IgG1 Kappa
Conjugate	FITC
Purity	Protein G purified
Buffer	PBS
Product Description	
Host	Mouse
Gene ID	348
Gene Symbol	APOE
Species	Human, Mouse, Rat (Negative)
Reactivity Notes	Reacts with human better than mouse. It does not appear to react with rat brain tissue.
Specificity/Sensitivity	This antibody detects ApoE2, ApoE3 and ApoE4 (PMID 2466929).
Immunogen	Purified human ApoE [UniProt# P02649]
Product Application Details	
Applications	Western Blot, ELISA, Flow Cytometry, Flow (Intracellular), Immunocytochemistry/ Immunofluorescence, Immunohistochemistry, Immunohistochemistry-Paraffin, Immunoprecipitation, CyTOF-ready
Recommended Dilutions	Western Blot, Flow Cytometry, ELISA, Immunohistochemistry, Immunocytochemistry/ Immunofluorescence, Immunoprecipitation, Immunohistochemistry-Paraffin, Flow (Intracellular), CyTOF-ready
Application Notes	Optimal dilution of this antibody should be experimentally determined.

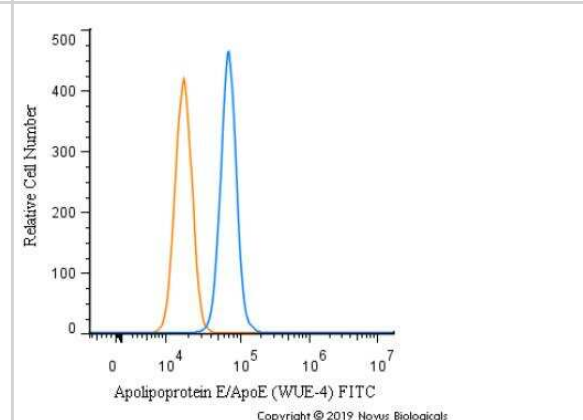


Images

Flow Cytometry: Apolipoprotein E/ApoE Antibody (WUE-4) [FITC] [NB110-60531F] - Analysis of apoB-positivity in blood plasma and PLT concentrate-derived EXOs. FCM detection of the indicated markers in EXOs conjugated onto latex beads. The EXOs were isolated from fasting PFP or PLT concentrate by differential UC and gravity size filtration (gray histograms: blocked beads incubated with antibody, empty histograms: EXO sample). Image collected and cropped by CiteAb from the following publication (<https://www.nature.com/articles/srep24316>), licensed under a CC-BY license.



Flow Cytometry: Apolipoprotein E/ApoE Antibody (WUE-4) [FITC] [NB110-60531F] - An intracellular stain was performed on SK-MEL-28 cells with Apolipoprotein E/ApoE Antibody [WUE-4] NB110-60531F (blue) and a matched isotype control (orange). Cells were fixed with 4% PFA and then permeabilized with 0.1% saponin. Cells were incubated in an antibody dilution of 10 ug/mL for 30 minutes at room temperature. Both antibodies were conjugated to FITC.



Publications

Sodar B W, Kittel A et al Low-density lipoprotein mimics blood plasma-derived exosomes and microvesicles during isolation and detection Sci Rep 2016-04-19 [PMID: 27087061] (FLOW, FLOW, Human)

Details:

Citation using the FITC version of this antibody.



Novus Biologicals USA

10730 E. Briarwood Avenue
Centennial, CO 80112
USA
Phone: 303.730.1950
Toll Free: 1.888.506.6887
Fax: 303.730.1966
nb-customerservice@bio-techne.com

Bio-Techne Canada

21 Canmotor Ave
Toronto, ON M8Z 4E6
Canada
Phone: 905.827.6400
Toll Free: 855.668.8722
Fax: 905.827.6402
canada.inquires@bio-techne.com

Bio-Techne Ltd

19 Barton Lane
Abingdon Science Park
Abingdon, OX14 3NB, United Kingdom
Phone: (44) (0) 1235 529449
Free Phone: 0800 37 34 15
Fax: (44) (0) 1235 533420
info.EMEA@bio-techne.com

General Contact Information

www.novusbio.com
Technical Support: nb-technical@bio-techne.com
Orders: nb-customerservice@bio-techne.com
General: novus@novusbio.com

Products Related to NB110-60531F

NBP1-43319F	Mouse IgG1 Kappa Isotype Control (P3.6.2.8.1) [FITC]
NB110-60531R	Apolipoprotein E/ApoE Antibody (WUE-4) [DyLight 550]
NBP2-49450PEP	Apolipoprotein E/ApoE Recombinant Protein Antigen
210-TA-005	TNF-alpha [Unconjugated]

Limitations

This product is for research use only and is not approved for use in humans or in clinical diagnosis. Primary Antibodies are guaranteed for 1 year from date of receipt.

For more information on our 100% guarantee, please visit www.novusbio.com/guarantee

Earn gift cards/discounts by submitting a review: www.novusbio.com/reviews/submit/NB110-60531F

Earn gift cards/discounts by submitting a publication using this product:
www.novusbio.com/publications

