

# Product Datasheet

## WT1 Antibody (6F-H2) - BSA Free NB110-60011

Unit Size: 0.1 ml

Aliquot and store at -20C or -80C. Avoid freeze-thaw cycles.

[www.novusbio.com](http://www.novusbio.com)



[technical@novusbio.com](mailto:technical@novusbio.com)

**Reviews: 3 Publications: 16**

Protocols, Publications, Related Products, Reviews, Research Tools and Images at:  
[www.novusbio.com/NB110-60011](http://www.novusbio.com/NB110-60011)

Updated 9/9/2025 v.20.1

**Earn rewards for product  
reviews and publications.**

Submit a publication at [www.novusbio.com/publications](http://www.novusbio.com/publications)

Submit a review at [www.novusbio.com/reviews/destination/NB110-60011](http://www.novusbio.com/reviews/destination/NB110-60011)



**NB110-60011**

WT1 Antibody (6F-H2) - BSA Free

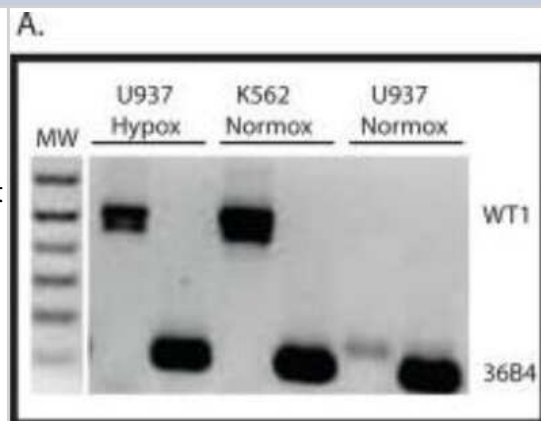
Product Information	
Unit Size	0.1 ml
Concentration	1.0 mg/ml
Storage	Aliquot and store at -20C or -80C. Avoid freeze-thaw cycles.
Clonality	Monoclonal
Clone	6F-H2
Preservative	0.02% Sodium Azide
Isotype	IgG1 Kappa
Purity	Protein G purified
Buffer	PBS
Target Molecular Weight	55 kDa

Product Description	
Description	Novus Biologicals Mouse WT1 Antibody (6F-H2) - BSA Free (NB110-60011) is a monoclonal antibody validated for use in IHC, WB, ICC/IF, Simple Western and IP. Anti-WT1 Antibody: Cited in 14 publications. All Novus Biologicals antibodies are covered by our 100% guarantee.
Host	Mouse
Gene ID	7490
Gene Symbol	WT1
Species	Human
Immunogen	Human recombinant Wilms Tumor 1 protein (WT1) (residues 1-181). [Swiss-Prot: P19544]

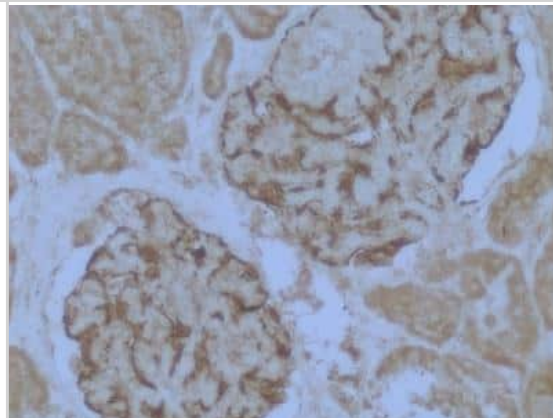
Product Application Details	
Applications	Western Blot, Simple Western, Immunohistochemistry-Paraffin, Immunocytochemistry/ Immunofluorescence, Immunohistochemistry, Immunohistochemistry-Frozen, Immunoprecipitation
Recommended Dilutions	Western Blot 2 ug/ml, Simple Western 1:50, Immunohistochemistry 1:400, Immunocytochemistry/ Immunofluorescence reported in scientific literature (PMID 25576053), Immunoprecipitation 2-10 ug/ml lysate, Immunohistochemistry-Paraffin 1:400, Immunohistochemistry-Frozen 1: 400
Application Notes	In Western blot, a doublet is observed at approx. 55 kDa. Prior to immunostaining paraffin tissues, antigen retrieval with sodium citrate buffer (pH 6.0) is recommended. In immunostaining, this target may be found localized to nucleus/nucleolus and cytoplasm of cells (WT1 shuttles between nucleus and cytoplasm - PMID: 14681305). In Simple Western only 10 - 15 uL of the recommended dilution is used per data point. See <a href="#">Simple Western Antibody Database</a> for Simple Western validation: Tested in Hek293 lysate 0.5 mg/mL, separated by Size, antibody dilution of 1:50, apparent MW was 68 kDa. Separated by Size-Wes, Sally Sue/Peggy Sue.

## Images

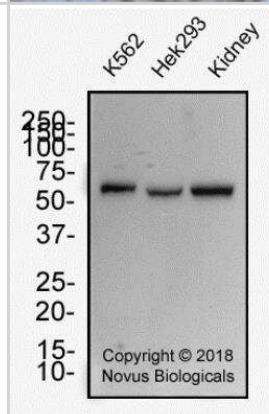
Western Blot: WT1 Antibody (6F-H2) [NB110-60011] - Hypomethylation of the Intron 1 CpG island results in WT1 expression. RNA was isolated from K562 and U937 cells growing under atmospheric conditions (Normox) and from U937 cells growing in 1% O<sub>2</sub> (Hypox) and was analyzed by RT-PCR using primers that span exon 5 of the WT1 mRNA. Ribosomal RNA 36B4 is used as a positive control, and molecular weight markers (MW) are shown. Image collected and cropped by CiteAb from the following publication (<https://dx.plos.org/10.1371/journal.pone.0119837>), licensed under a CC-BY license.



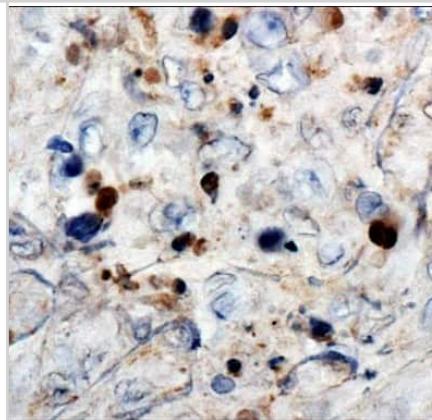
Immunohistochemistry-Paraffin: WT1 Antibody (6F-H2) [NB110-60011] - Staining of human kidney glomerulus tissue. Heat mediated antigen retrieval was performed by heating in citrate buffer (pH 6) at 95C for 20 minutes. Image from verified customer review.



Western Blot: WT1 Antibody (6F-H2) [NB110-60011] - Whole cell protein from human K562, HEK293 and kidney tissue was separated on a 12% gel by SDS-PAGE, transferred to PVDF membrane and blocked in 5% non-fat milk in TBST. The membrane was probed with 2.0 ug/ml anti-WT1 in block buffer and detected with an anti-mouse HRP secondary antibody using chemiluminescence.



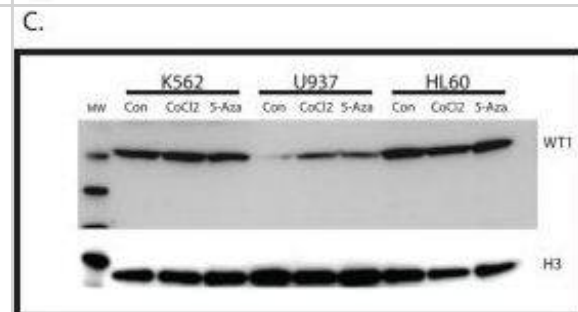
Immunohistochemistry: WT1 Antibody (6F-H2) [NB110-60011] - Analysis of Wilms Tumor 1 in human renal cancer using DAB with hematoxylin counterstain.



Simple Western: WT1 Antibody (6F-H2) [NB110-60011] - Lane view shows a specific band for WT1 in 0.5 mg/ml of Hek293 lysate. This experiment was performed under reducing conditions using the 12-230 kDa separation system.



Western Blot: WT1 Antibody (6F-H2) - BSA Free [NB110-60011] - Hypomethylation of Intron 1 CpG island results in WT1 expression. (C) Cell lysates from K562, U937, & HL60 cells treated with CoCl<sub>2</sub>, 5-azacytidine, or untreated controls analyzed by WB using an antibody against WT1. Histone H3 used as a loading control. Size of molecular weight markers is in kDa. Image collected & cropped by CiteAb from the following publication (<https://dx.plos.org/10.1371/journal.pone.0119837>), licensed under a CC-BY license. Not internally tested by Novus Biologicals.



## Publications

Cao Y, Chen Z, Hu J et al. Mfn2 Regulates High Glucose-Induced MAMs Dysfunction and Apoptosis in Podocytes via PERK Pathway *Frontiers in Cell and Developmental Biology* 2021-12-20 [PMID: 34988075]

Loubalova Z, Fulka H, Horvat F et al. Formation of spermatogonia and fertile oocytes in golden hamsters requires piRNAs *Nature Cell Biology* 2021-09-06 [PMID: 34489573]

Miyazaki Y, Orisaka M, Fujita Y et al. Steroidogenic differentiation of human amniotic membrane-derived mesenchymal stem cells into a progesterone-/androgen-producing cell lineage by SF-1 and an estrogen-producing cell lineage by WT1-KTS *Frontiers in Endocrinology* 2024-09-18 [PMID: 39359415]

M Wang, L Xiong, LJ Jiang, YZ Lu, F Liu, LJ Song, F Xiang, XL He, F Yu, SY Shuai, WL Ma, H Ye miR-4739 mediates pleural fibrosis by targeting bone morphogenetic protein 7 *EBioMedicine*, 2019-03-05;41(0):670-682. 2019-03-05 [PMID: 30850350]

Yang X, Chen Z, Luo Z et al. STING deletion alleviates podocyte injury through suppressing inflammation by targeting NLRP3 in diabetic kidney disease *Cellular signalling* 2023-06-15 [PMID: 37329999] (IHC, Mouse)

Hu J, Zhang Z, Hu H et al. LRH-1 activation alleviates diabetes-induced podocyte injury by promoting GLS2-mediated glutaminolysis *Cell proliferation* 2023-04-13 [PMID: 37057309] (IHC, Mouse)

Medina Rangel P, Cross E, Liu C et al. Cell Cycle and Senescence Regulation by Podocyte Histone Deacetylase 1 and 2 *Journal of the American Society of Nephrology : JASN* 2022-11-22 [PMID: 36414418]

Wang CH Development of Class II-agnostic CAR T Cell Therapy Targeting WT1 Peptide Presented by Diverse HLA class II Molecules Thesis 2022-01-01

Pruett N, Singh A, Shankar A Et Al. Normal Mesothelial Cell Lines Newly Derived from Human Pleural Biopsy Explants *Am. J. Physiol. Lung Cell Mol. Physiol.* 2020-07-29 [PMID: 32726133] (Human)

Loubalova Z, Fulka H, Horvat F, et al. Golden hamster piRNAs are necessary for early embryonic development and establishment of spermatogonia *bioRxiv* 2021-01-28 (ICC/IF, Hamster)

Horne SJ, Vasquez J, Guo Y et al. Podocyte-Specific Loss of Kruppel-Like Factor 6 Increases Mitochondrial Injury in Diabetic Kidney Disease *Diabetes* Aug 16 2018 12:00AM [PMID: 30115650] (IHC, Mouse)

Fan Ying, Li Xuezhong, Xiao Wenzhen et al. BAMBI elimination enhances alternative TGF- $\beta$  signaling and glomerular dysfunction in diabetic mice. *Diabetes* 2015 [PMID: 25576053] (ICC/IF, Mouse)

More publications at <http://www.novusbio.com/NB110-60011>



## Procedures

### Western Blot Protocol for Wilms Tumor 1 Antibody (NB110-60011)

WT1 Antibody (6F-H2):

Western Blot Protocol

1. Perform SDS-PAGE (4-12% MOPS) on samples to be analyzed, loading 28 ug of total protein per lane.
2. Transfer proteins to Nitrocellulose according to the instructions provided by the manufacturer of the transfer apparatus.
3. Rinse membrane with dH<sub>2</sub>O and then stain the blot using Ponceau S for 1-2 minutes to access the transfer of proteins onto the nitrocellulose membrane. Rinse the blot in water to remove excess stain and mark the lane locations and locations of molecular weight markers using a pencil.
4. Rinse the blot in TBS for approximately 5 minutes.
5. Block the membrane using 5% non-fat dry milk + 1% BSA in TBS, 1 hour at room temperature.
6. Rinse the membrane in dH<sub>2</sub>O and then wash the membrane in wash buffer [TBS + 0.1% Tween] 3 times for 10 minutes each.
7. Dilute the mouse anti-Wilm's Tumor 1 primary antibody (NB 110-60011) in blocking buffer and incubate 2 hours at room temperature.
8. Rinse the membrane in dH<sub>2</sub>O and then wash the membrane in wash buffer [TBS + 0.1% Tween] 3 times for 10 minutes each.
9. Apply the diluted mouse-IgG HRP-conjugated secondary antibody in blocking buffer (as per manufacturers instructions) and incubate 1 hour at room temperature.
10. Wash the blot in wash buffer [TBS + 0.1% Tween] 3 times for 10 minutes each (this step can be repeated as required to reduce background).
11. Apply the detection reagent of choice in accordance with the manufacturers instructions (Pierce, ECL).

Note: Tween-20 can be added to the blocking or antibody dilution buffer at a final concentration of 0.05-0.2%, provided it does not interfere with antibody-antigen binding.





### **Novus Biologicals USA**

10730 E. Briarwood Avenue  
Centennial, CO 80112  
USA  
Phone: 303.730.1950  
Toll Free: 1.888.506.6887  
Fax: 303.730.1966  
nb-customerservice@bio-techne.com

### **Bio-Techne Canada**

21 Canmotor Ave  
Toronto, ON M8Z 4E6  
Canada  
Phone: 905.827.6400  
Toll Free: 855.668.8722  
Fax: 905.827.6402  
canada.inquires@bio-techne.com

### **Bio-Techne Ltd**

19 Barton Lane  
Abingdon Science Park  
Abingdon, OX14 3NB, United Kingdom  
Phone: (44) (0) 1235 529449  
Free Phone: 0800 37 34 15  
Fax: (44) (0) 1235 533420  
info.EMEA@bio-techne.com

### **General Contact Information**

www.novusbio.com  
Technical Support: nb-technical@bio-techne.com  
Orders: nb-customerservice@bio-techne.com  
General: novus@novusbio.com

### **Products Related to NB110-60011**

---

NB800-PC6	293 Whole Cell Lysate
NBP2-33376H	Blue Marker Antibody (6F4-F6) [HRP]
HAF007	Goat anti-Mouse IgG Secondary Antibody [HRP]
NB7539	Goat anti-Mouse IgG (H+L) Secondary Antibody [HRP]
NBP1-43319-0.5mg	Mouse IgG1 Kappa Isotype Control (P3.6.2.8.1)

---

### **Limitations**

This product is for research use only and is not approved for use in humans or in clinical diagnosis. Primary Antibodies are guaranteed for 1 year from date of receipt.

For more information on our 100% guarantee, please visit [www.novusbio.com/guarantee](http://www.novusbio.com/guarantee)

Earn gift cards/discounts by submitting a review: [www.novusbio.com/reviews/submit/NB110-60011](http://www.novusbio.com/reviews/submit/NB110-60011)

Earn gift cards/discounts by submitting a publication using this product:  
[www.novusbio.com/publications](http://www.novusbio.com/publications)

