

Product Datasheet

GPR55 Antibody - BSA Free

NB110-55498

Unit Size: 0.05 mg

Keep as concentrated solution. Aliquot and store at -20C or below. Avoid multiple freeze-thaw cycles.

www.novusbio.com



technical@novusbio.com

Reviews: 1 Publications: 9

Protocols, Publications, Related Products, Reviews, Research Tools and Images at:
www.novusbio.com/NB110-55498

Updated 10/23/2024 v.20.1

Earn rewards for product reviews and publications.

Submit a publication at www.novusbio.com/publications

Submit a review at www.novusbio.com/reviews/destination/NB110-55498



NB110-55498

GPR55 Antibody - BSA Free

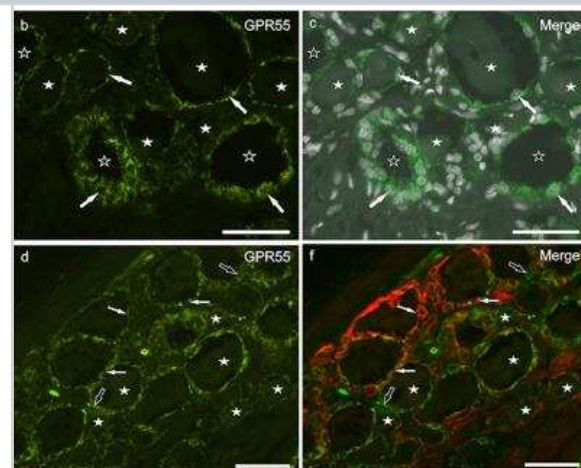
Product Information	
Unit Size	0.05 mg
Concentration	1.0 mg/ml
Storage	Keep as concentrated solution. Aliquot and store at -20C or below. Avoid multiple freeze-thaw cycles.
Clonality	Polyclonal
Preservative	0.1% Sodium Azide
Isotype	IgG
Purity	Immunogen affinity purified
Buffer	PBS

Product Description	
Description	Product can be stored undiluted at 4C for up to 1 month.
Host	Rabbit
Gene ID	9290
Gene Symbol	GPR55
Species	Human, Canine
Reactivity Notes	Predicted cross-reactivity based on sequence identity: Gorilla (100%), Gibbon (95%), Marmoset (95%), Bovine (85%), Mouse (80%), Equine (80%), Porcine (80%). Canine reactivity reported from a verified customer review.
Specificity/Sensitivity	Human GPR55. BLAST analysis of the peptide immunogen showed no homology with other human proteins.
Immunogen	Synthetic 20 amino acid peptide from 3rd cytoplasmic domain of human GPR55.

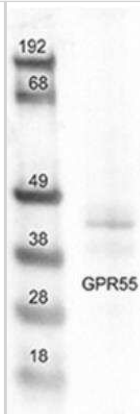
Product Application Details	
Applications	Western Blot, Immunohistochemistry, Immunohistochemistry-Frozen, Immunohistochemistry-Paraffin
Recommended Dilutions	Western Blot, Immunohistochemistry, Immunohistochemistry-Paraffin 5 ug/ml, Immunohistochemistry-Frozen
Application Notes	Use in WB reported in scientific literature (PMID:31608295). GPR55 antibody validated for IHC-F from a verified customer review.

Images

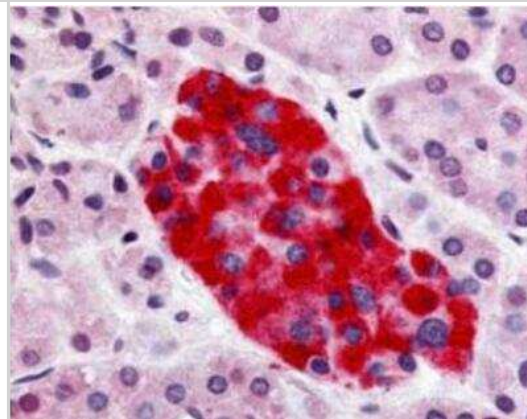
Immunohistochemistry: GPR55 Antibody [NB110-55498] - Photomicrographs of cryosections of canine cervical (C8) dorsal root ganglion showing GPR55 (b-f) immunolabeling. (a-c) Arrows indicate the Neurotrace-labeled nuclei of satellite glial cells which showed bright GPR55 immunolabelling (c). White stars indicate unlabeled sensory neurons; open stars indicate empty spaces in which sensory neurons were no more evident. (d-f) White arrows indicate satellite glial cells which co-expressed bright GPR55- (d) and glial fibrillary acidic protein (GFAP) immunoreactivity. Stars indicate sensory neurons of different dimension, which expressed faint-to-moderate GPR55 immunoreactivity. Open arrow indicate autofluorescent pigment. Bar: 50 um. Image collected and cropped by CiteAb from the following publication (<https://www.frontiersin.org/article/10.3389/fvets.2019.00313/full>) licensed under a CC-BY license.



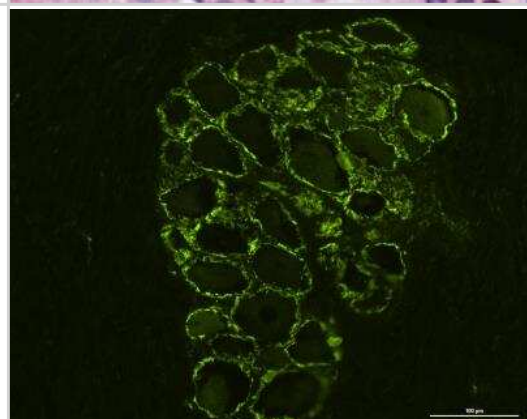
Western Blot: GPR55 Antibody [NB110-55498] - Representative image of Western blots (WB) analysis showing the specificity of the primary antibody rabbit anti-G protein-coupled receptor 55 (GPR55). The antibody revealed a single band of expected molecular weight (~40 kDa). The images of the different immunoblots were slightly adjusted in brightness and contrast to match their backgrounds. Image collected and cropped by CiteAb from the following publication (<https://www.frontiersin.org/article/10.3389/fvets.2019.00313/full>) licensed under a CC-BY license.



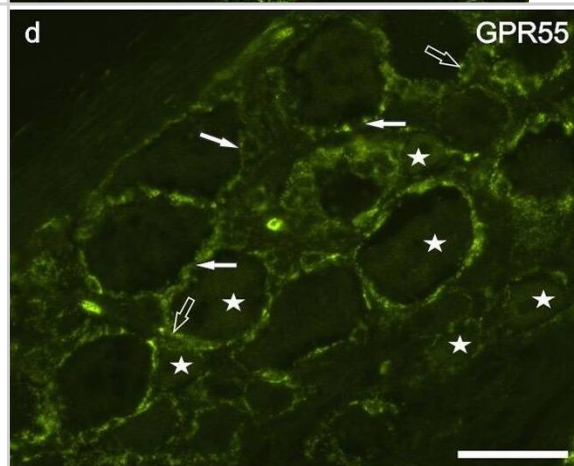
Immunohistochemistry-Paraffin: GPR55 Antibody [NB110-55498] - Analysis of anti-GPR55 antibody with human pancreas, islet of Langerhans.



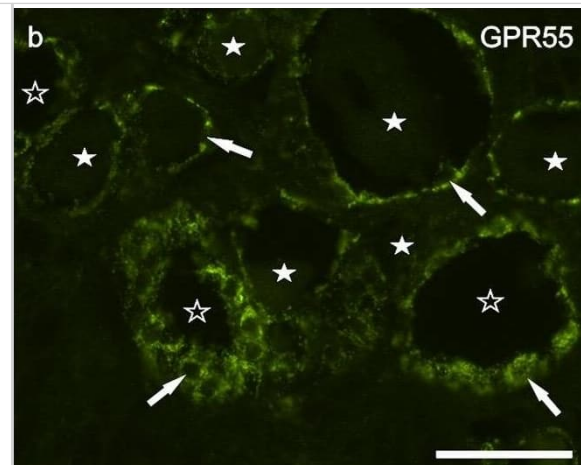
Immunohistochemistry-Frozen: GPR55 Antibody [NB110-55498] - Cryosection of canine cervical dorsal root ganglion in which satellite glial cells and some sensory neurons expressed GPR55 immunoreactivity. Image submitted by a verified customer review.



Immunocytochemistry/ Immunofluorescence: GPR55 Antibody - BSA Free [NB110-55498] - Photomicrographs of cryosections of canine cervical (C8) dorsal root ganglion showing GPR55 (a–f) & PPARalpha (g–i) immunolabeling. (a–c) Arrows indicate the Neurotrace-labeled nuclei of satellite glial cells (a) which showed bright GPR55 immunolabelling (b). White stars indicate unlabeled sensory neurons; open stars indicate empty spaces in which sensory neurons were no more evident. (d–f) White arrows indicate satellite glial cells which co-expressed bright GPR55- (d) & glial fibrillary acidic protein (GFAP) immunoreactivity; open arrows indicate SGCs which were GPR55 immunoreactive & GFAP negative (e). Stars indicate sensory neurons of different dimension, which expressed faint –to-moderate GPR55 immunoreactivity. (g–i) White arrows indicate the Neurotrace labeled nuclei of SGCs which showed PPARalpha immunoreactivity (h). Open arrow indicate autofluorescent pigment. Bar: a–i = 50 μ m. Image collected & cropped by CiteAb from the following publication (<https://pubmed.ncbi.nlm.nih.gov/31608295>), licensed under a CC-BY license. Not internally tested by Novus Biologicals.



Immunocytochemistry/ Immunofluorescence: GPR55 Antibody - BSA Free [NB110-55498] - Photomicrographs of cryosections of canine cervical (C8) dorsal root ganglion showing GPR55 (a–f) & PPARAlpha (g–i) immunolabeling. (a–c) Arrows indicate the Neurotrace-labeled nuclei of satellite glial cells (a) which showed bright GPR55 immunolabelling (b). White stars indicate unlabeled sensory neurons; open stars indicate empty spaces in which sensory neurons were no more evident. (d–f) White arrows indicate satellite glial cells which co-expressed bright GPR55- (d) & glial fibrillary acidic protein (GFAP) immunoreactivity; open arrows indicate SGCs which were GPR55 immunoreactive & GFAP negative (e). Stars indicate sensory neurons of different dimension, which expressed faint –to-moderate GPR55 immunoreactivity. (g–i) White arrows indicate the Neurotrace labeled nuclei of SGCs which showed PPARAlpha immunoreactivity (h). Open arrow indicate autofluorescent pigment. Bar: a–i = 50 μ m. Image collected & cropped by CiteAb from the following publication (<https://pubmed.ncbi.nlm.nih.gov/31608295>), licensed under a CC-BY license. Not internally tested by Novus Biologicals.



Publications

Giulia Polidoro, Giorgia Galiazzo, Fiorella Giancola, Serafeim Papadimitriou, Maria Kouki, Silvia Sabattini, Antonella Rigillo, Roberto Chiochetti Expression of cannabinoid and cannabinoid-related receptors in the oral mucosa of healthy cats and cats with chronic gingivostomatitis *Journal of Feline Medicine and Surgery* 2021-08-01 [PMID: 33174485]

Zamith Cunha R, Semprini A, Salamanca G et al. Expression of Cannabinoid Receptors in the Trigeminal Ganglion of the Horse *International journal of molecular sciences* 2023-11-03 [PMID: 37958932] (IHC, ICC/IF, Equine)

Chiochetti R, De Silva M, Aspidi F et al. Distribution of Cannabinoid Receptors in Keratinocytes of Healthy Dogs and Dogs With Atopic Dermatitis *Frontiers in Veterinary Science* 2022-07-08 [PMID: 35873682] (Immunocytochemistry/ Immunofluorescence)

Galiazzo G, De Silva M, Giancola F et al. Cellular distribution of cannabinoid-related receptors TRPV1, PPAR-gamma, GPR55 and GPR3 in the equine cervical dorsal root ganglia *Equine Veterinary Journal* 2022-07-01 [PMID: 34418142] (Immunohistochemistry, Immunohistochemistry-Frozen)

Zamith Cunha R, Salamanca G, Mille F et al. Endocannabinoid System Receptors at the Hip and Stifle Joints of Middle-Aged Dogs: A Novel Target for the Therapeutic Use of Cannabis sativa Extract in Canine Arthropathies *Animals (Basel)* 2023-09-06 [PMID: 37760233] (Western Blot, Immunocytochemistry/ Immunofluorescence)

Chiochetti R, Salamanca G, De Silva M et al. Cannabinoid receptors in the inflammatory cells of canine atopic dermatitis *Frontiers in Veterinary Science* 2022-09-15 [PMID: 36187821] (Immunohistochemistry-Frozen, Immunocytochemistry/ Immunofluorescence)

Ayakannu T, Taylor AH, Konje JC. Expression of the putative cannabinoid receptor GPR55 is increased in endometrial carcinoma *Histochemistry and Cell Biology* 2021-11-01 [PMID: 34324032] (Immunohistochemistry)

Zamith Cunha R, Zannoni A, Salamanca G et al. Expression of cannabinoid (CB1 and CB2) and cannabinoid-related receptors (TRPV1, GPR55, and PPAR?) in the synovial membrane of the horse metacarpophalangeal joint *Frontiers in veterinary science* 2023-03-03 [PMID: 36937015] (IHC-P, Horse)

Details:

1:80 IHC-P dilution

Chiochetti R, Galiazzo G, Tagliavia C et al. Corrigendum: Cellular Distribution of Canonical and Putative Cannabinoid Receptors in Canine Cervical Dorsal Root Ganglia *Front. Vet. Sci.* 2019-10-31 [PMID: 31608295] (WB, Canine)



Novus Biologicals USA

10730 E. Briarwood Avenue
Centennial, CO 80112
USA
Phone: 303.730.1950
Toll Free: 1.888.506.6887
Fax: 303.730.1966
nb-customerservice@bio-techne.com

Bio-Techne Canada

21 Canmotor Ave
Toronto, ON M8Z 4E6
Canada
Phone: 905.827.6400
Toll Free: 855.668.8722
Fax: 905.827.6402
canada.inquires@bio-techne.com

Bio-Techne Ltd

19 Barton Lane
Abingdon Science Park
Abingdon, OX14 3NB, United Kingdom
Phone: (44) (0) 1235 529449
Free Phone: 0800 37 34 15
Fax: (44) (0) 1235 533420
info.EMEA@bio-techne.com

General Contact Information

www.novusbio.com
Technical Support: nb-technical@bio-techne.com
Orders: nb-customerservice@bio-techne.com
General: novus@novusbio.com

Products Related to NB110-55498

NBL1-11284	GPR55 Overexpression Lysate
HAF008	Goat anti-Rabbit IgG Secondary Antibody [HRP]
NB7160	Goat anti-Rabbit IgG (H+L) Secondary Antibody [HRP]
NBP2-24891	Rabbit IgG Isotype Control

Limitations

This product is for research use only and is not approved for use in humans or in clinical diagnosis. Primary Antibodies are guaranteed for 1 year from date of receipt.

For more information on our 100% guarantee, please visit www.novusbio.com/guarantee

Earn gift cards/discounts by submitting a review: www.novusbio.com/reviews/submit/NB110-55498

Earn gift cards/discounts by submitting a publication using this product:
www.novusbio.com/publications

