

Product Datasheet

GPIHBP1 Antibody - BSA Free NB110-41539

Unit Size: 0.1 ml

Aliquot and store at -20C or -80C. Avoid freeze-thaw cycles.

www.novusbio.com



technical@novusbio.com

Protocols, Publications, Related Products, Reviews, Research Tools and Images at:
www.novusbio.com/NB110-41539

Updated 9/9/2025 v.20.1

Earn rewards for product
reviews and publications.

Submit a publication at www.novusbio.com/publications

Submit a review at www.novusbio.com/reviews/destination/NB110-41539



NB110-41539

GPIHBP1 Antibody - BSA Free

Product Information	
Unit Size	0.1 ml
Concentration	0.9 mg/ml
Storage	Aliquot and store at -20C or -80C. Avoid freeze-thaw cycles.
Clonality	Polyclonal
Preservative	0.05% Sodium Azide
Isotype	IgG
Purity	Immunogen affinity purified
Buffer	Tris-Glycine and 0.15M NaCl

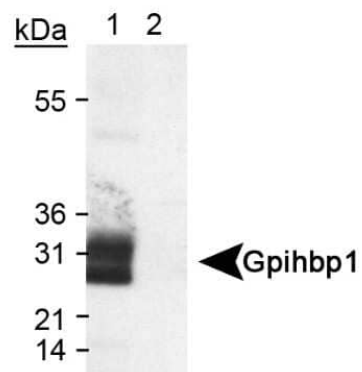
Product Description	
Description	Novus Biologicals Rabbit GPIHBP1 Antibody - BSA Free (NB110-41539) is a polyclonal antibody validated for use in WB and ICC/IF. All Novus Biologicals antibodies are covered by our 100% guarantee.
Host	Rabbit
Gene ID	338328
Gene Symbol	GPIHBP1
Species	Human, Mouse
Immunogen	A synthetic peptide corresponding to an internal region [within residues 170-250] of mouse GPIHBP1. [Swiss-Prot# Q9D1N2]

Product Application Details	
Applications	Western Blot, Immunocytochemistry/ Immunofluorescence
Recommended Dilutions	Western Blot 2.0 ug/ml, Immunocytochemistry/ Immunofluorescence 1:20 - 1:50
Application Notes	This GPIHBP1 antibody is useful for Immunocytochemistry/Immunofluorescence and Western blot. A flash ECL exposure is recommended for first try. In ICC/IF membrane staining was observed.

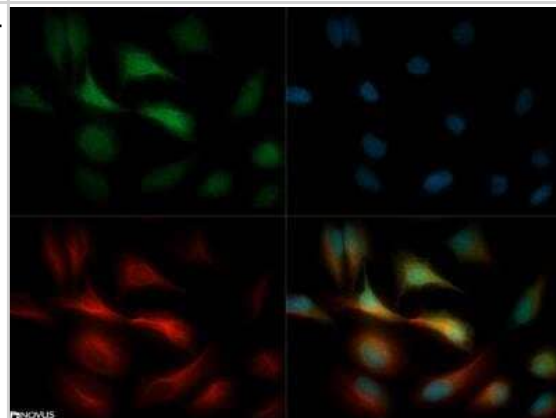


Images

Western Blot: GPIHBP1 Antibody [NB110-41539] - Detection of mouse Gpihbp1 in transfected lysate (Lane 1). Empty vector lysate was used as a negative control (Lane 2).



Immunocytochemistry/Immunofluorescence: GPIHBP1 Antibody [NB110-41539] - GPIHBP1 antibody was tested in HeLa cells with DyLight 488 (green). Nuclei and alpha-tubulin were counterstained with DAPI (blue) and DyLight 550 (red).



Procedures

Western Blot protocol for GPIHBP1 Antibody (NB110-41539)

GPIHBP1 Antibody:

Western Blot Protocol

1. Perform SDS-PAGE (4-12%) on samples to be analyzed, loading 25 ug of total protein per lane.
 2. Transfer proteins to Nitrocellulose according to the instructions provided by the manufacturer of the transfer apparatus.
 3. Rinse membrane with dH₂O and then stain the blot using Ponceau S for 1-2 minutes to access the transfer of proteins onto the nitrocellulose membrane. Rinse the blot in water to remove excess stain and mark the lane locations and locations of molecular weight markers using a pencil.
 4. Rinse the blot in TBS for approximately 5 minutes.
 5. Block the membrane using 5% non-fat dry milk + 1% BSA in TBS, 1 hour at room temperature.
 6. Rinse the membrane in dH₂O and then wash the membrane in wash buffer [TBS + 0.1% Tween] 3 times for 10 minutes each.
 7. Dilute the rabbit anti-Gpihbp1 primary antibody (NB110-41539) in blocking buffer and incubate 2 hours at room temperature.
 8. Rinse the membrane in dH₂O and then wash the membrane in wash buffer [TBS + 0.1% Tween] 3 times for 10 minutes each.
 9. Apply the diluted rabbit-IgG HRP-conjugated secondary antibody in blocking buffer (as per manufacturers instructions) and incubate 1 hour at room temperature.
 10. Wash the blot in wash buffer [TBS + 0.1% Tween] 3 times for 10 minutes each (this step can be repeated as required to reduce background).
 11. Apply the detection reagent of choice in accordance with the manufacturers instructions (Pierce ECL).
- Note: Tween-20 can be added to the blocking or antibody dilution buffer at a final concentration of 0.05-0.2%, provided it does not interfere with antibody-antigen binding.

Immunocytochemistry/Immunofluorescence protocol for GPIHBP1 Antibody (NB110-41539)

GPIHBP1 Antibody:

Culture cells to appropriate density in 35 mm culture dishes or 6-well plates.

1. Remove culture medium and add 10% formalin to the dish. Fix at room temperature for 30 minutes.
2. Remove the formalin and add ice cold methanol. Incubate for 5-10 minutes.
3. Remove methanol and add washing solution (i.e. PBS). Be sure to not let the specimen dry out. Wash three times for 10 minutes.
4. To block nonspecific antibody binding incubate in 10% normal goat serum from 1 hour to overnight at room temperature.
5. Add primary antibody at appropriate dilution and incubate at room temperature from 2 hours to overnight at room temperature.
6. Remove primary antibody and replace with washing solution. Wash three times for 10 minutes.
7. Add secondary antibody at appropriate dilution. Incubate for 1 hour at room temperature.
8. Remove antibody and replace with wash solution, then wash for 10 minutes. Add Hoechst 33258 to wash solution at 1:25,000 and incubate for 10 minutes. Wash a third time for 10 minutes.
9. Cells can be viewed directly after washing. The plates can also be stored in PBS containing Azide covered in Parafilm (TM). Cells can also be cover-slipped using Fluoromount, with appropriate sealing.

*The above information is only intended as a guide. The researcher should determine what protocol best meets their needs. Please follow safe laboratory procedures.



Novus Biologicals USA

10730 E. Briarwood Avenue
Centennial, CO 80112
USA
Phone: 303.730.1950
Toll Free: 1.888.506.6887
Fax: 303.730.1966
nb-customerservice@bio-techne.com

Bio-Techne Canada

21 Canmotor Ave
Toronto, ON M8Z 4E6
Canada
Phone: 905.827.6400
Toll Free: 855.668.8722
Fax: 905.827.6402
canada.inquires@bio-techne.com

Bio-Techne Ltd

19 Barton Lane
Abingdon Science Park
Abingdon, OX14 3NB, United Kingdom
Phone: (44) (0) 1235 529449
Free Phone: 0800 37 34 15
Fax: (44) (0) 1235 533420
info.EMEA@bio-techne.com

General Contact Information

www.novusbio.com
Technical Support: nb-technical@bio-techne.com
Orders: nb-customerservice@bio-techne.com
General: novus@novusbio.com

Products Related to NB110-41539

NB820-59661	Mouse Kidney Whole Tissue Lysate (Adult Whole Normal)
NB110-41539PEP	GPIHBP1 Antibody Blocking Peptide
NBP2-33376H	Blue Marker Antibody (6F4-F6) [HRP]
HAF008	Goat anti-Rabbit IgG Secondary Antibody [HRP]
NB7160	Goat anti-Rabbit IgG (H+L) Secondary Antibody [HRP]
NBP2-24891	Rabbit IgG Isotype Control

Limitations

This product is for research use only and is not approved for use in humans or in clinical diagnosis. Primary Antibodies are guaranteed for 1 year from date of receipt.

For more information on our 100% guarantee, please visit www.novusbio.com/guarantee

Earn gift cards/discounts by submitting a review: www.novusbio.com/reviews/submit/NB110-41539

Earn gift cards/discounts by submitting a publication using this product:
www.novusbio.com/publications



