

# Product Datasheet

## **BIRC6 Antibody** **NB110-40730**

Unit Size: 0.1 ml

Store at 4C. Do not freeze.

[www.novusbio.com](http://www.novusbio.com)



[technical@novusbio.com](mailto:technical@novusbio.com)

### **Publications: 5**

Protocols, Publications, Related Products, Reviews, Research Tools and Images at:  
[www.novusbio.com/NB110-40730](http://www.novusbio.com/NB110-40730)

Updated 9/9/2025 v.20.1

**Earn rewards for product  
reviews and publications.**

Submit a publication at [www.novusbio.com/publications](http://www.novusbio.com/publications)

Submit a review at [www.novusbio.com/reviews/destination/NB110-40730](http://www.novusbio.com/reviews/destination/NB110-40730)



**NB110-40730****BIRC6 Antibody**

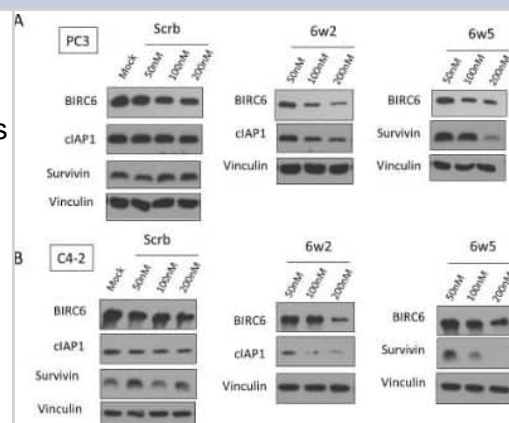
Product Information	
Unit Size	0.1 ml
Concentration	0.05 mg/ml
Storage	Store at 4C. Do not freeze.
Clonality	Polyclonal
Preservative	0.09% Sodium Azide
Isotype	IgG
Purity	Immunogen affinity purified
Buffer	TBS and 0.1% BSA

Product Description	
Description	Novus Biologicals Rabbit BIRC6 Antibody (NB110-40730) is a polyclonal antibody validated for use in IHC and WB. Anti-BIRC6 Antibody: Cited in 5 publications. All Novus Biologicals antibodies are covered by our 100% guarantee.
Host	Rabbit
Gene ID	57448
Gene Symbol	BIRC6
Species	Human
Reactivity Notes	Crab-eating macaque and White-tufted-ear marmoset (100%).
Immunogen	The immunogen recognized by this antibody maps to a region between residues 4775 and the C-terminus (residue 4829) of human Baculoviral IAP repeat-containing protein 6 using the numbering given in Swiss-Prot entry Q9NR09 (GeneID 57448).

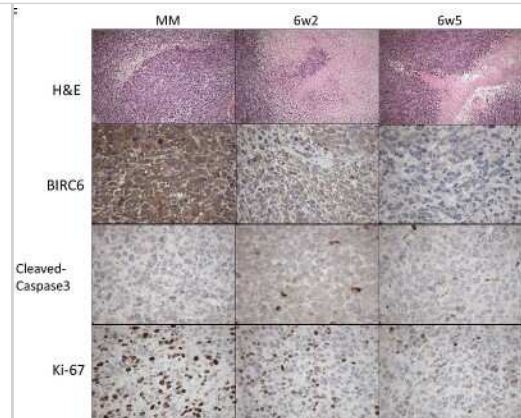
Product Application Details	
Applications	Western Blot, Immunohistochemistry-Paraffin, Immunohistochemistry
Recommended Dilutions	Western Blot 1:100-1:2000, Immunohistochemistry 1:100-1:500, Immunohistochemistry-Paraffin 1:100-1:500
Application Notes	Western Blot was reported in scientific literature (PMID: 25071009). Epitope exposure with citrate buffer will enhance staining. Likely to work with frozen sections.

**Images**

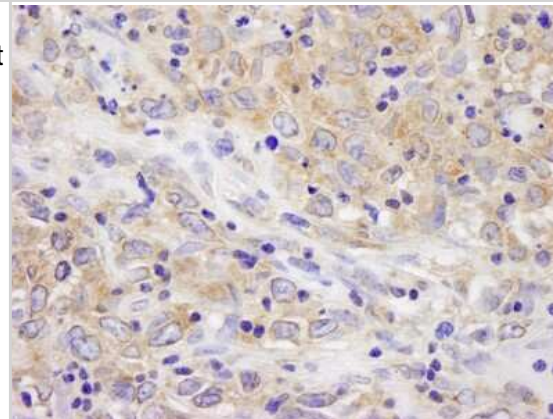
Western Blot: BIRC6 Antibody [NB110-40730] - Dual IAP-targeting ASOs knockdown BIRC6, cIAP1 or survivin proteins and lead to marked suppression of CRPC cell proliferation. Western blotting showing protein levels of BIRC6, cIAP1 and survivin in two CRPC cell lines (A) PC-3 cells and (B) C4-2 cells transfected with Mock or increasing dosages of scrambled ASO (Scrb), dASOs 6w2 and 6w5 for 72 hr. Image collected and cropped by CiteAb from the following publication (<https://www.oncotarget.com/fulltext/2229>), licensed under a CC-BY license.



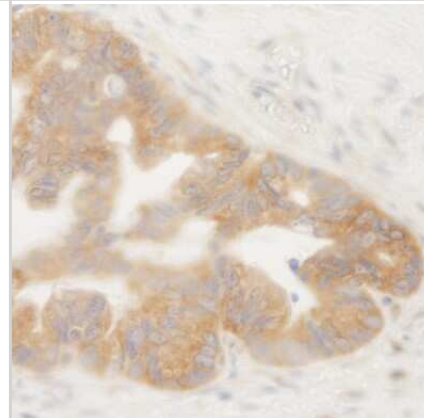
Immunohistochemistry: BIRC6 Antibody [NB110-40730] - Treatments with dASOs resulted in significant lower viable tumor volume. Representative images of control ASO-6w2- and 6w5-treated PC-3 xenografts using H&E, and IHC staining of BIRC6, cleaved-caspase 3 and Ki-67. 20x magnification. Image collected and cropped by CiteAb from the following publication (<https://www.oncotarget.com/fulltext/2229>), licensed under a CC-BY license.



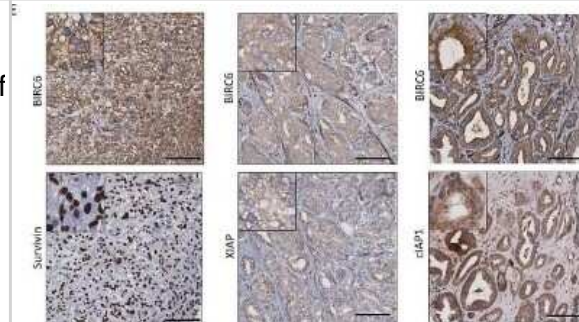
Immunohistochemistry-Paraffin: BIRC6 Antibody [NB110-40730] - FFPE section of human metastatic lymph node. Antibody: Affinity purified rabbit anti-BIRC6/Apollon used at a dilution of 1:250. Detection: DAB



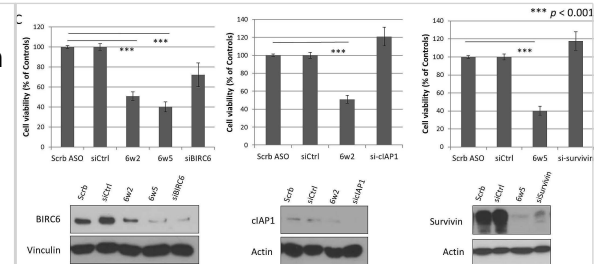
Immunohistochemistry-Paraffin: BIRC6 Antibody [NB110-40730] - FFPE section of human ovarian tumor. Antibody: Affinity purified rabbit antiBIRC6/Apollon used at a dilution of 1:250. Detection: DAB



Immunohistochemistry: BIRC6 Antibody [NB110-40730] - Elevated BIRC6 expression is associated with advanced stages of prostate cancer: co-upregulation of other IAP members. Representative images of correlated expressions between BIRC6 and survivin, XIAP and cIAP1. 20x magnification, scale bar, 100 um. Image collected and cropped by CiteAb from the following publication (<https://www.oncotarget.com/fulltext/2229>), licensed under a CC-BY license.



Dual IAP-targeting ASOs knockdown BIRC6, cIAP1 or survivin proteins and lead to marked suppression of CRPC cell proliferation (A-B) Western blotting showing protein levels of BIRC6, cIAP1 and survivin in two CRPC cell lines (A) PC-3 cells and (B) C4-2 cells transfected with Mock or increasing dosages of scrambled ASO (Scrb), dASOs 6w2 and 6w5 for 72 hr. (C) Comparison of dual IAP targeting and single IAP-targeting. Cell viability of PC-3 cells transfected with dASOs 6w2, 6w5 and siRNA-targeting BIRC6, cIAP1 or survivin, was determined by MTS assay at 72 hr after transfection. Cell viabilities of ASO- and siRNA-treated cells were normalized with corresponding Scrb ASO and siRNA controls. Error bars represent mean percentage cell viability  $\pm$  S.D. Western blotting of 3 IAPs showing comparable amounts of reduced protein expression obtained with dASO and siRNA single IAP-targeting. (D) Proliferation of PC-3 cells transfected with mock, Scrb ASO, dASOs 6w2 and 6w5. Error bars represent mean cell number  $\pm$  S.D. (E) MTS viability assay of C4-2 cells treated with dASOs. Image collected and cropped by CiteAb from the following open publication (<https://pubmed.ncbi.nlm.nih.gov/25071009>), licensed under a CC-BY license. Not internally tested by Novus Biologicals.



## Publications

Zhuang W, Zhang C, Hao F, Sun X. Baculoviral IAP Repeat Containing 6 (BIRC6) Is a Predictor of Prognosis in Prostate Cancer. *Med. Sci. Monit.* 2018-02-10 [PMID: 29429983] (IHC-P, Human)

Luk IS, Shrestha R, Xue H et al. BIRC6-targeting as potential therapy for advanced, enzalutamide-resistant prostate cancer *Clin. Cancer Res.* 2016-09-23 [PMID: 27663589] (IF/IHC, WB, Human)

Luk Sze Ue Iris, Xue Hui, Cheng Hongwei et al. The BIRC6 gene as a novel target for therapy of prostate cancer: dual targeting of inhibitors of apoptosis. *Oncotarget.* 2014-08-30 [PMID: 25071009] (WB)

Dong X, Lin D, Low C et al. Elevated expression of BIRC6 protein in non-small-cell lung cancers is associated with cancer recurrence and chemoresistance. *J Thorac Oncol* 2013-02-01 [PMID: 23287853]

Low CG, Luk IS, Lin D et al. BIRC6 Protein, an Inhibitor of Apoptosis: Role in Survival of Human Prostate Cancer Cells. *PLoS One* 2013-01-01 [PMID: 23409057] (WB, IF/IHC, Human)



### **Novus Biologicals USA**

10730 E. Briarwood Avenue  
Centennial, CO 80112  
USA  
Phone: 303.730.1950  
Toll Free: 1.888.506.6887  
Fax: 303.730.1966  
nb-customerservice@bio-techne.com

### **Bio-Techne Canada**

21 Canmotor Ave  
Toronto, ON M8Z 4E6  
Canada  
Phone: 905.827.6400  
Toll Free: 855.668.8722  
Fax: 905.827.6402  
canada.inquires@bio-techne.com

### **Bio-Techne Ltd**

19 Barton Lane  
Abingdon Science Park  
Abingdon, OX14 3NB, United Kingdom  
Phone: (44) (0) 1235 529449  
Free Phone: 0800 37 34 15  
Fax: (44) (0) 1235 533420  
info.EMEA@bio-techne.com

### **General Contact Information**

www.novusbio.com  
Technical Support: nb-technical@bio-techne.com  
Orders: nb-customerservice@bio-techne.com  
General: novus@novusbio.com

### **Products Related to NB110-40730**

---

NBP2-33376H	Blue Marker Antibody (6F4-F6) [HRP]
HAF008	Goat anti-Rabbit IgG Secondary Antibody [HRP]
NB7160	Goat anti-Rabbit IgG (H+L) Secondary Antibody [HRP]
NBP2-24891	Rabbit IgG Isotype Control

---

### **Limitations**

This product is for research use only and is not approved for use in humans or in clinical diagnosis. Primary Antibodies are guaranteed for 1 year from date of receipt.

For more information on our 100% guarantee, please visit [www.novusbio.com/guarantee](http://www.novusbio.com/guarantee)

Earn gift cards/discounts by submitting a review: [www.novusbio.com/reviews/submit/NB110-40730](http://www.novusbio.com/reviews/submit/NB110-40730)

Earn gift cards/discounts by submitting a publication using this product:  
[www.novusbio.com/publications](http://www.novusbio.com/publications)

