

Product Datasheet

PP2C gamma/PPM1G Antibody NB110-38867

Unit Size: 0.1 ml

Store at 4C. Do not freeze.

www.novusbio.com



technical@novusbio.com

Publications: 3

Protocols, Publications, Related Products, Reviews, Research Tools and Images at:
www.novusbio.com/NB110-38867

Updated 9/9/2025 v.20.1

Earn rewards for product
reviews and publications.

Submit a publication at www.novusbio.com/publications

Submit a review at www.novusbio.com/reviews/destination/NB110-38867



NB110-38867**PP2C gamma/PPM1G Antibody**

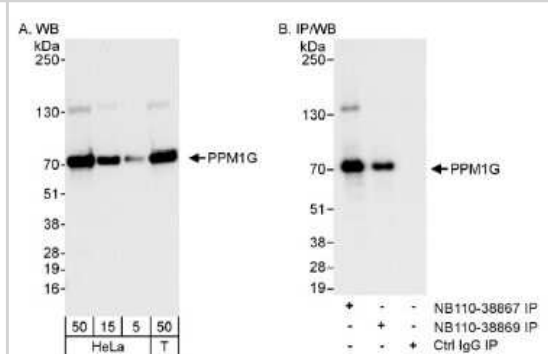
| Product Information | |
|---------------------|-----------------------------|
| Unit Size | 0.1 ml |
| Concentration | 0.2 mg/ml |
| Storage | Store at 4C. Do not freeze. |
| Clonality | Polyclonal |
| Preservative | 0.09% Sodium Azide |
| Isotype | IgG |
| Purity | Immunogen affinity purified |
| Buffer | TBS and 0.1% BSA |

| Product Description | |
|---------------------|---|
| Description | Novus Biologicals Rabbit PP2C gamma/PPM1G Antibody (NB110-38867) is a polyclonal antibody validated for use in IHC, WB and IP. Anti-PP2C gamma/PPM1G Antibody: Cited in 2 publications. All Novus Biologicals antibodies are covered by our 100% guarantee. |
| Host | Rabbit |
| Gene ID | 5496 |
| Gene Symbol | PPM1G |
| Species | Human, Mouse |
| Immunogen | The immunogen recognized by this antibody maps to a region between residue 400 and 450 of human Protein Phosphatase Magnesium-dependent 1 Gamma using the numbering given in entry NP_817092.1 (GeneID 5496). |

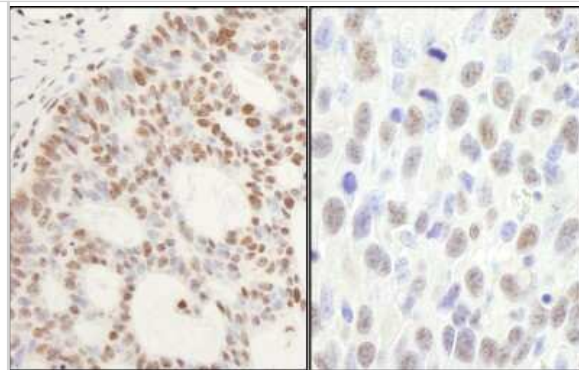
| Product Application Details | |
|-----------------------------|---|
| Applications | Western Blot, Immunohistochemistry-Paraffin, Immunohistochemistry, Immunoprecipitation |
| Recommended Dilutions | Western Blot 1:2000-1:10000, Immunohistochemistry 1:200-1:1000, Immunoprecipitation 2-5 ug/mg lysate, Immunohistochemistry-Paraffin 1:100-1:500 |
| Application Notes | This antibody can be used for immunoprecipitation and Western blot analysis. Prepare working dilution immediately before use. |

Images

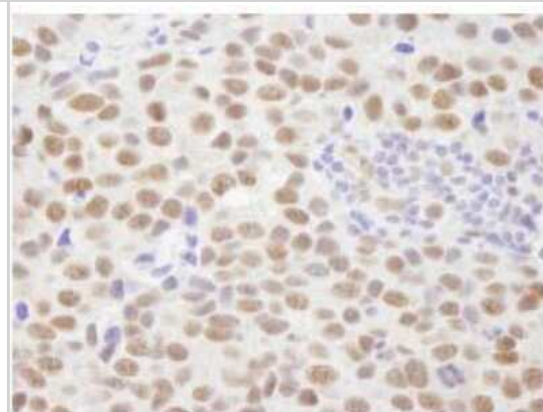
Western Blot: PP2C gamma/PPM1G Antibody [NB110-38867] - Detection of Human PPM1G on HeLa whole cell lysate (5, 15, and 50 microgram) and 293T (50 microgram) using NB110-38867. PPM1G was also immunoprecipitated by rabbit anti-PPM1G antibody NB110-38869.



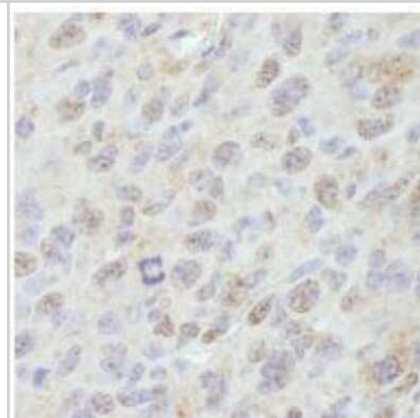
Immunohistochemistry: PP2C gamma/PPM1G Antibody [NB110-38867]
- Sample: FFPE sections of human skin basal cell carcinoma (left) and mouse squamous cell carcinoma (right). Antibody: Affinity purified rabbit anti- PPM1G used at a dilution of 1:1,000 (0.2ug/ml) and 1:200 (1ug/ml).
Detection: DAB



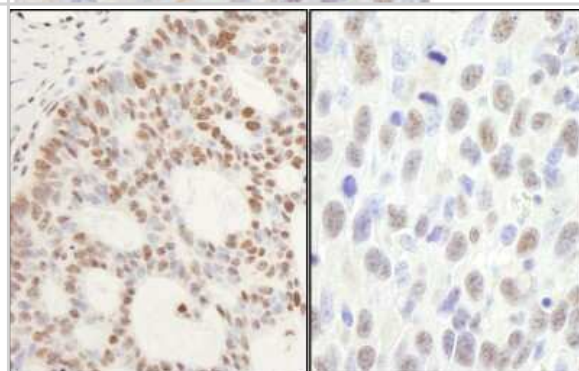
Immunohistochemistry-Paraffin: PP2C gamma/PPM1G Antibody [NB110-38867] - FFPE section of human breast adenocarcinoma. Affinity purified rabbit anti-PPM1G used at a dilution of 1:500.



Immunohistochemistry-Paraffin: PP2C gamma/PPM1G Antibody [NB110-38867] - FFPE section of mouse squamous cell carcinoma. Affinity purified rabbit anti-PPM1G used at a dilution of 1:100.



Immunohistochemistry: PP2C gamma/PPM1G Antibody [NB110-38867]
- Sample: FFPE sections of human skin basal cell carcinoma (left) and mouse squamous cell carcinoma (right). Antibody: Affinity purified rabbit anti- PPM1G used at a dilution of 1:1,000 (0.2ug/ml) and 1:200 (1ug/ml).
Detection: DAB



Publications

Huang W, Chen X, Wu H et al. PPM1G promotes chemoresistance in triple negative breast cancer by enhancing YAP signaling. *Pharmacological research* 2025-10-08 [PMID: 41072836]

Hutten S, Prescott A, James J et al. An intranucleolar body associated with rDNA. *Chromosoma* 2011-10-01 [PMID: 21698343]

Ryan K, Khleborodova A, Pan J et al. Small molecule activators of pre-mRNA 3' cleavage. *RNA* 2009-03-01 [PMID: 19155323]





Novus Biologicals USA

10730 E. Briarwood Avenue
Centennial, CO 80112
USA
Phone: 303.730.1950
Toll Free: 1.888.506.6887
Fax: 303.730.1966
nb-customerservice@bio-techne.com

Bio-Techne Canada

21 Canmotor Ave
Toronto, ON M8Z 4E6
Canada
Phone: 905.827.6400
Toll Free: 855.668.8722
Fax: 905.827.6402
canada.inquires@bio-techne.com

Bio-Techne Ltd

19 Barton Lane
Abingdon Science Park
Abingdon, OX14 3NB, United Kingdom
Phone: (44) (0) 1235 529449
Free Phone: 0800 37 34 15
Fax: (44) (0) 1235 533420
info.EMEA@bio-techne.com

General Contact Information

www.novusbio.com
Technical Support: nb-technical@bio-techne.com
Orders: nb-customerservice@bio-techne.com
General: novus@novusbio.com

Products Related to NB110-38867

| | |
|-------------|---|
| NB800-PC1 | HeLa Whole Cell Lysate |
| NBP2-33376H | Blue Marker Antibody (6F4-F6) [HRP] |
| HAF008 | Goat anti-Rabbit IgG Secondary Antibody [HRP] |
| NB7160 | Goat anti-Rabbit IgG (H+L) Secondary Antibody [HRP] |
| NBP2-24891 | Rabbit IgG Isotype Control |

Limitations

This product is for research use only and is not approved for use in humans or in clinical diagnosis. Primary Antibodies are guaranteed for 1 year from date of receipt.

For more information on our 100% guarantee, please visit www.novusbio.com/guarantee

Earn gift cards/discounts by submitting a review: www.novusbio.com/reviews/submit/NB110-38867

Earn gift cards/discounts by submitting a publication using this product:
www.novusbio.com/publications

