

Product Datasheet

c-Rel Antibody - BSA Free NB100-97834

Unit Size: 100 ul

Store at 4C. Do not freeze.

www.novusbio.com



technical@novusbio.com

Protocols, Publications, Related Products, Reviews, Research Tools and Images at:
www.novusbio.com/NB100-97834

Updated 9/9/2025 v.20.1

Earn rewards for product
reviews and publications.

Submit a publication at www.novusbio.com/publications

Submit a review at www.novusbio.com/reviews/destination/NB100-97834



NB100-97834

c-Rel Antibody - BSA Free

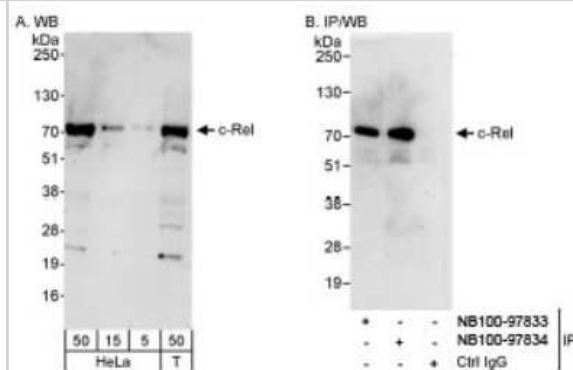
| Product Information | |
|---------------------|---------------------------------------|
| Unit Size | 100 ul |
| Concentration | 1.0 mg/ml |
| Storage | Store at 4C. Do not freeze. |
| Clonality | Polyclonal |
| Preservative | 0.09% Sodium Azide |
| Isotype | IgG |
| Purity | Immunogen affinity purified |
| Buffer | Tris-Citrate/Phosphate (pH 7.0 - 8.0) |

| Product Description | |
|---------------------|--|
| Description | Novus Biologicals Rabbit c-Rel Antibody - BSA Free (NB100-97834) is a polyclonal antibody validated for use in WB and IP. All Novus Biologicals antibodies are covered by our 100% guarantee. |
| Host | Rabbit |
| Gene ID | 5966 |
| Gene Symbol | REL |
| Species | Human |
| Immunogen | The immunogen recognized by this antibody maps to a region between residue 569 and 619 of human reticuloendotheliosis viral oncogene homolog using the numbering given in entry NP_002899.1 (GeneID 5966). |

| Product Application Details | |
|-----------------------------|---|
| Applications | Western Blot, Immunoprecipitation |
| Recommended Dilutions | Western Blot 1:2000-1:10000, Immunoprecipitation 1:10-1:500 |

Images

Western Blot: c-Rel Antibody [NB100-97834] - Detection of Human c-Rel by Western Blot and Immunoprecipitation. Samples: Whole cell lysate from HeLa (50 mcg for WB; 1 mg for IP, 20% of IP loaded) and 293T (T; 50 mcg) cells. Antibodies: Affinity purified rabbit anti-c-Rel antibody NB100-97834 used for WB at 0.4 mcg/ml (A) and 1 mcg/ml (B) and used for IP at 3 mcg/mg lysate. c-Rel was also immunoprecipitated by rabbit anti-c-Rel antibody NB100-97833, which recognizes an upstream epitope. Detection: Chemiluminescence with exposure times of 30 seconds (A and B).





Novus Biologicals USA

10730 E. Briarwood Avenue
Centennial, CO 80112
USA
Phone: 303.730.1950
Toll Free: 1.888.506.6887
Fax: 303.730.1966
nb-customerservice@bio-techne.com

Bio-Techne Canada

21 Canmotor Ave
Toronto, ON M8Z 4E6
Canada
Phone: 905.827.6400
Toll Free: 855.668.8722
Fax: 905.827.6402
canada.inquires@bio-techne.com

Bio-Techne Ltd

19 Barton Lane
Abingdon Science Park
Abingdon, OX14 3NB, United Kingdom
Phone: (44) (0) 1235 529449
Free Phone: 0800 37 34 15
Fax: (44) (0) 1235 533420
info.EMEA@bio-techne.com

General Contact Information

www.novusbio.com
Technical Support: nb-technical@bio-techne.com
Orders: nb-customerservice@bio-techne.com
General: novus@novusbio.com

Products Related to NB100-97834

| | |
|-------------|---|
| NBP2-33376H | Blue Marker Antibody (6F4-F6) [HRP] |
| HAF008 | Goat anti-Rabbit IgG Secondary Antibody [HRP] |
| NB7160 | Goat anti-Rabbit IgG (H+L) Secondary Antibody [HRP] |
| NBP2-24891 | Rabbit IgG Isotype Control |

Limitations

This product is for research use only and is not approved for use in humans or in clinical diagnosis. Primary Antibodies are guaranteed for 1 year from date of receipt.

For more information on our 100% guarantee, please visit www.novusbio.com/guarantee

Earn gift cards/discounts by submitting a review: www.novusbio.com/reviews/submit/NB100-97834

Earn gift cards/discounts by submitting a publication using this product:
www.novusbio.com/publications

