

Product Datasheet

Monoglyceride Lipase Antibody

NB100-96920

Unit Size: 0.1 mg

Store at -20C. Avoid freeze-thaw cycles.

www.novusbio.com



technical@novusbio.com

Publications: 1

Protocols, Publications, Related Products, Reviews, Research Tools and Images at:
www.novusbio.com/NB100-96920

Updated 9/9/2025 v.20.1

Earn rewards for product
reviews and publications.

Submit a publication at www.novusbio.com/publications

Submit a review at www.novusbio.com/reviews/destination/NB100-96920



NB100-96920

Monoglyceride Lipase Antibody

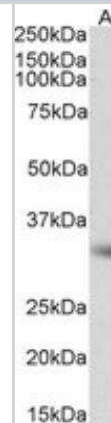
Product Information	
Unit Size	0.1 mg
Concentration	0.5 mg/ml
Storage	Store at -20C. Avoid freeze-thaw cycles.
Clonality	Polyclonal
Preservative	0.02% Sodium Azide
Isotype	IgG
Purity	Immunogen affinity purified
Buffer	Tris saline (20 mM Tris pH 7.3, 150 mM NaCl), 0.5% BSA
Target Molecular Weight	33 kDa

Product Description	
Description	Novus Biologicals Goat Monoglyceride Lipase Antibody (NB100-96920) is a polyclonal antibody validated for use in IHC, WB, ELISA, Flow and ICC/IF. Anti-Monoglyceride Lipase Antibody: Cited in 1 publication. All Novus Biologicals antibodies are covered by our 100% guarantee.
Host	Goat
Gene ID	11343
Gene Symbol	MGLL
Species	Human, Mouse
Specificity/Sensitivity	This antibody is expected to recognize both reported isoforms (NP_009214.1; NP_001003794.1).
Immunogen	Peptide with sequence C-QDLPHLVNADGQY corresponding to internal region (near N-Terminus) according to NP_001003794.1.

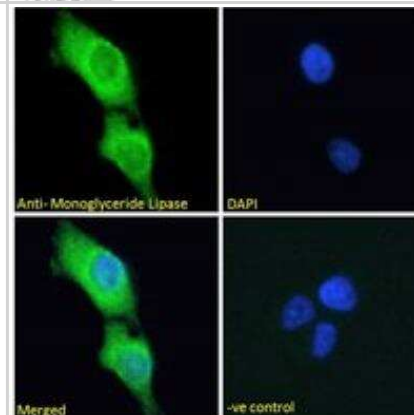
Product Application Details	
Applications	Western Blot, Immunohistochemistry-Paraffin, Flow Cytometry, Immunocytochemistry/ Immunofluorescence, Immunohistochemistry, Peptide ELISA
Recommended Dilutions	Western Blot 0.3 - 1 ug/mL, Flow Cytometry 10 ug/mL, Immunohistochemistry 5 ug/mL, Immunocytochemistry/ Immunofluorescence 10 ug/mL, Immunohistochemistry-Paraffin 5 ug/mL, Peptide ELISA Detection limit 1:128000
Application Notes	Western blot: Approx 35 kDa band observed in Mouse Adipose lysates and in preliminary testing of Human, Cerebellum lysate and in lysate of cell line NIH3T3 (calculated MW of 33.3 kDa according to NP_001003794.1).

Images

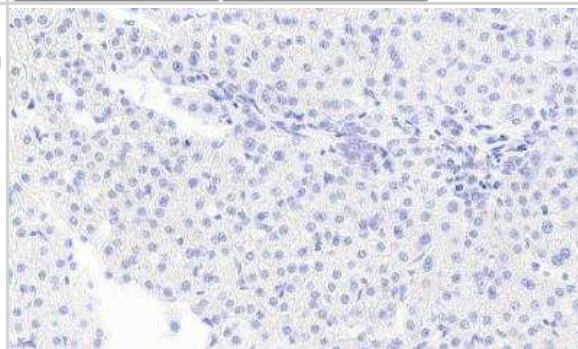
Western Blot: Monoglyceride Lipase Antibody [NB100-96920] - Staining of Mouse Adipose lysate (35 ug protein in RIPA buffer). Antibody at 0.5 ug/mL. Detected by chemiluminescence.



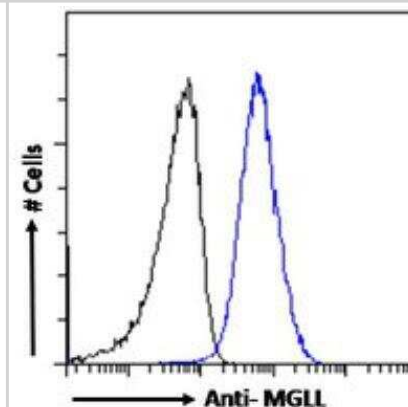
Immunocytochemistry/Immunofluorescence: Monoglyceride Lipase Antibody [NB100-96920] - Immunofluorescence analysis of paraformaldehyde fixed A431 cells, permeabilized with 0.15% Triton. Primary incubation 1hr (10 ug/mL) followed by Alexa Fluor 488 secondary antibody (2 ug/mL), showing cytoplasmic and endoplasmic reticulum staining. The nuclear stain is DAPI (blue). Negative control: Unimmunized goat IgG (10 ug/mL) followed by Alexa Fluor 488 secondary antibody (2 ug/mL).



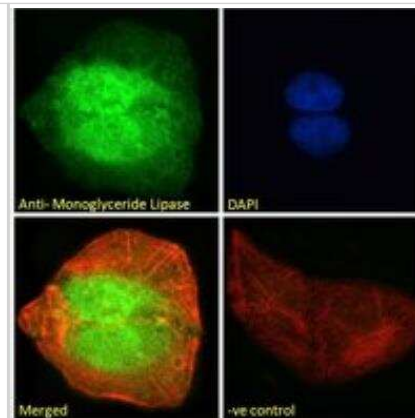
Immunohistochemistry-Paraffin: Monoglyceride Lipase Antibody [NB100-96920] - Negative Control showing staining of paraffin embedded Human Liver, with no primary antibody.



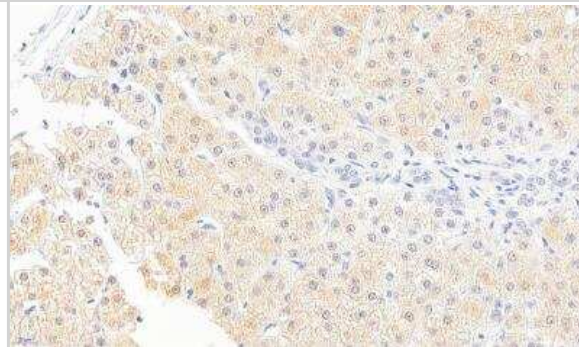
Flow Cytometry: Monoglyceride Lipase Antibody [NB100-96920] - Flow cytometric analysis of paraformaldehyde fixed A431 cells (blue line), permeabilized with 0.5% Triton. Primary incubation 1hr (10 ug/mL) followed by Alexa Fluor 488 secondary antibody (1 ug/mL). IgG control: Unimmunized goat IgG (black line) followed by Alexa Fluor 488 secondary antibody.



Immunocytochemistry/Immunofluorescence: Monoglyceride Lipase Antibody [NB100-96920] - Immunofluorescence analysis of paraformaldehyde fixed U2OS cells, permeabilized with 0.15% Triton. Primary incubation 1hr (10 ug/mL) followed by Alexa Fluor 488 secondary antibody (2 ug/mL), showing nuclear and cytoplasmic staining. Actin filaments were stained with phalloidin (red) and the nuclear stain is DAPI (blue). Negative control: Unimmunized goat IgG (10 ug/mL) followed by Alexa Fluor 488 secondary antibody (2 ug/mL).



Immunohistochemistry-Paraffin: Monoglyceride Lipase Antibody [NB100-96920] - Staining of paraffin embedded Human Liver. Antibody at 5 ug/mL. Heat induced antigen retrieval with citrate buffer pH 6, HRP-staining.



Publications

Blankman JL, Simon GM, Cravatt BF. A comprehensive profile of brain enzymes that hydrolyze the endocannabinoid 2-arachidonoylglycerol. Chem Biol 2007-12-01 [PMID: 18096503]



Novus Biologicals USA

10730 E. Briarwood Avenue
Centennial, CO 80112
USA
Phone: 303.730.1950
Toll Free: 1.888.506.6887
Fax: 303.730.1966
nb-customerservice@bio-techne.com

Bio-Techne Canada

21 Canmotor Ave
Toronto, ON M8Z 4E6
Canada
Phone: 905.827.6400
Toll Free: 855.668.8722
Fax: 905.827.6402
canada.inquires@bio-techne.com

Bio-Techne Ltd

19 Barton Lane
Abingdon Science Park
Abingdon, OX14 3NB, United Kingdom
Phone: (44) (0) 1235 529449
Free Phone: 0800 37 34 15
Fax: (44) (0) 1235 533420
info.EMEA@bio-techne.com

General Contact Information

www.novusbio.com
Technical Support: nb-technical@bio-techne.com
Orders: nb-customerservice@bio-techne.com
General: novus@novusbio.com

Products Related to NB100-96920

NBL1-13088	Monoglyceride Lipase Overexpression Lysate
NBP2-33376H	Blue Marker Antibody (6F4-F6) [HRP]
HAF017	Rabbit anti-Goat IgG Secondary Antibody [HRP (Horseradish Peroxidase)]
HAF109	Donkey anti-Goat IgG Secondary Antibody [HRP (Horseradish Peroxidase)]
NB410-28088-1mg	Goat IgG Isotype Control

Limitations

This product is for research use only and is not approved for use in humans or in clinical diagnosis. Primary Antibodies are guaranteed for 1 year from date of receipt.

For more information on our 100% guarantee, please visit www.novusbio.com/guarantee

Earn gift cards/discounts by submitting a review: www.novusbio.com/reviews/submit/NB100-96920

Earn gift cards/discounts by submitting a publication using this product:
www.novusbio.com/publications



