

# Product Datasheet

## ASH1 Antibody - BSA Free NB100-93290

Unit Size: 100 ul

Store at 4C. Do not freeze.

[www.novusbio.com](http://www.novusbio.com)



[technical@novusbio.com](mailto:technical@novusbio.com)

### Publications: 3

Protocols, Publications, Related Products, Reviews, Research Tools and Images at:  
[www.novusbio.com/NB100-93290](http://www.novusbio.com/NB100-93290)

Updated 9/9/2025 v.20.1

Earn rewards for product  
reviews and publications.

Submit a publication at [www.novusbio.com/publications](http://www.novusbio.com/publications)

Submit a review at [www.novusbio.com/reviews/destination/NB100-93290](http://www.novusbio.com/reviews/destination/NB100-93290)



**NB100-93290**

ASH1 Antibody - BSA Free

Product Information	
Unit Size	100 ul
Concentration	1.0 mg/ml
Storage	Store at 4C. Do not freeze.
Clonality	Polyclonal
Preservative	0.09% Sodium Azide
Isotype	IgG
Purity	Immunogen affinity purified
Buffer	Tris-Citrate/Phosphate (pH 7.0 - 8.0)

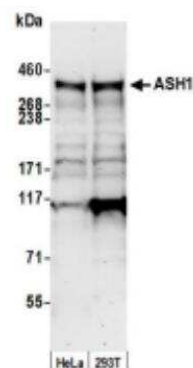
Product Description	
Description	Novus Biologicals Rabbit ASH1 Antibody - BSA Free (NB100-93290) is a polyclonal antibody validated for use in IHC, WB and IP. Anti-ASH1 Antibody: Cited in 3 publications. All Novus Biologicals antibodies are covered by our 100% guarantee.
Host	Rabbit
Gene ID	55870
Gene Symbol	ASH1L
Species	Human, Mouse
Immunogen	The immunogen recognized by this antibody maps to a region between residue 2919 and 2969 of human absent, small and homeotic disks protein 1 using the numbering given in entry CAI12722.1 (GeneID 55870).

Product Application Details	
Applications	Western Blot, Immunohistochemistry-Paraffin, Immunohistochemistry, Immunoprecipitation
Recommended Dilutions	Western Blot 1:2000-1:10000, Immunohistochemistry 1:1000 - 1:5000, Immunoprecipitation 2-5 ug/mg lysate, Immunohistochemistry-Paraffin 1:1000 - 1:5000
Application Notes	Epitope retrieval with citrate buffer pH6.0 is recommended for FFPE tissue sections.

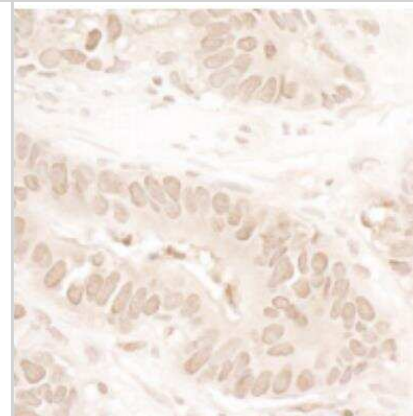


## Images

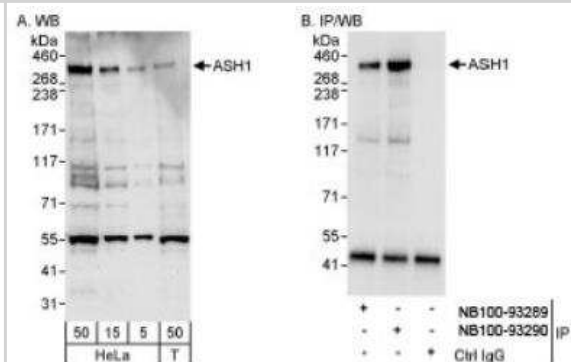
Western Blot: ASH1 Antibody [NB100-93290] - Whole cell lysate (50 ug) from HeLa and HEK293T cells prepared using NETN lysis buffer. Antibody: Affinity purified rabbit anti-ASH1 antibody used for WB at 0.1 ug/ml. Detection: Chemiluminescence with an exposure time of 30 seconds



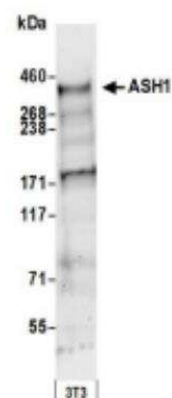
Immunohistochemistry-Paraffin: ASH1 Antibody [NB100-93290] - FFPE section of human colon carcinoma. Antibody: Affinity purified rabbit anti-ASH1 used at a dilution of 1:1,000 (1ug/ml). Detection: DAB



Western Blot: ASH1 Antibody [NB100-93290] - Detection of Human ASH1 on HeLa whole cell lysate using NB100-93290. ASH1 was also immunoprecipitated by rabbit anti-ASH1 antibody NB100-93289.



Western Blot: ASH1 Antibody [NB100-93290] - Whole cell lysate (50 ug) from mouse NIH3T3 cells prepared using NETN lysis buffer. Antibody: Affinity purified rabbit antiASH1 antibody used for WB at 0.4 ug/ml. Detection: Chemiluminescence with an exposure time of 30 seconds.



## Publications

Yan Y, Tian M, Li M, Zhou G et al. ASH1L haploinsufficiency results in autistic-like phenotypes in mice and links Eph receptor gene to autism spectrum disorder *Neuron* 2022-01-26 [PMID: 35081333]

Du Y, Wu S, Xi S et al. ASH1L in Hepatoma Cells and Hepatic Stellate Cells Promotes Fibrosis-Associated Hepatocellular Carcinoma by Modulating Tumor-Associated Macrophages. *Advanced science* (Weinheim, Baden-Wurttemberg, Germany) 2024-10-08 [PMID: 39377228]

Liu S, Tian M, He F et al. Mutations in ASH1L confer susceptibility to Tourette syndrome *Mol. Psychiatry* 2019-10-31 [PMID: 31673123] (WB, Mouse)





### **Novus Biologicals USA**

10730 E. Briarwood Avenue  
Centennial, CO 80112  
USA  
Phone: 303.730.1950  
Toll Free: 1.888.506.6887  
Fax: 303.730.1966  
nb-customerservice@bio-techne.com

### **Bio-Techne Canada**

21 Canmotor Ave  
Toronto, ON M8Z 4E6  
Canada  
Phone: 905.827.6400  
Toll Free: 855.668.8722  
Fax: 905.827.6402  
canada.inquires@bio-techne.com

### **Bio-Techne Ltd**

19 Barton Lane  
Abingdon Science Park  
Abingdon, OX14 3NB, United Kingdom  
Phone: (44) (0) 1235 529449  
Free Phone: 0800 37 34 15  
Fax: (44) (0) 1235 533420  
info.EMEA@bio-techne.com

### **General Contact Information**

www.novusbio.com  
Technical Support: nb-technical@bio-techne.com  
Orders: nb-customerservice@bio-techne.com  
General: novus@novusbio.com

### **Products Related to NB100-93290**

---

NBP2-33376H	Blue Marker Antibody (6F4-F6) [HRP]
HAF008	Goat anti-Rabbit IgG Secondary Antibody [HRP]
NB7160	Goat anti-Rabbit IgG (H+L) Secondary Antibody [HRP]
NBP2-24891	Rabbit IgG Isotype Control

---

### **Limitations**

This product is for research use only and is not approved for use in humans or in clinical diagnosis. Primary Antibodies are guaranteed for 1 year from date of receipt.

For more information on our 100% guarantee, please visit [www.novusbio.com/guarantee](http://www.novusbio.com/guarantee)

Earn gift cards/discounts by submitting a review: [www.novusbio.com/reviews/submit/NB100-93290](http://www.novusbio.com/reviews/submit/NB100-93290)

Earn gift cards/discounts by submitting a publication using this product:  
[www.novusbio.com/publications](http://www.novusbio.com/publications)

