

Product Datasheet

EGR2 Antibody - BSA Free

NB100-92327

Unit Size: 0.1 ml

Store at 4C short term. Aliquot and store at -20C long term. Avoid freeze-thaw cycles.

www.novusbio.com



technical@novusbio.com

Reviews: 1 Publications: 3

Protocols, Publications, Related Products, Reviews, Research Tools and Images at:
www.novusbio.com/NB100-92327

Updated 9/9/2025 v.20.1

Earn rewards for product reviews and publications.

Submit a publication at www.novusbio.com/publications

Submit a review at www.novusbio.com/reviews/destination/NB100-92327



NB100-92327

EGR2 Antibody - BSA Free

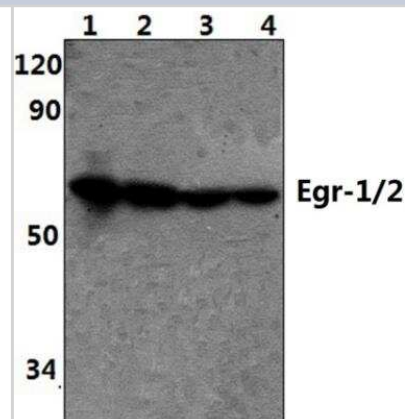
Product Information	
Unit Size	0.1 ml
Concentration	1.0 mg/ml
Storage	Store at 4C short term. Aliquot and store at -20C long term. Avoid freeze-thaw cycles.
Clonality	Polyclonal
Preservative	0.02% Sodium Azide
Isotype	IgG
Purity	Immunogen affinity purified
Buffer	PBS

Product Description	
Description	Novus Biologicals Rabbit EGR2 Antibody - BSA Free (NB100-92327) is a polyclonal antibody validated for use in IHC, WB and ICC/IF. Anti-EGR2 Antibody: Cited in 2 publications. All Novus Biologicals antibodies are covered by our 100% guarantee.
Host	Rabbit
Gene ID	1959
Gene Symbol	EGR2
Species	Human, Mouse, Rat
Immunogen	Synthetic peptide made to an internal portion of the human EGR2 protein (between amino acids 370-420) [UniProt P11161].

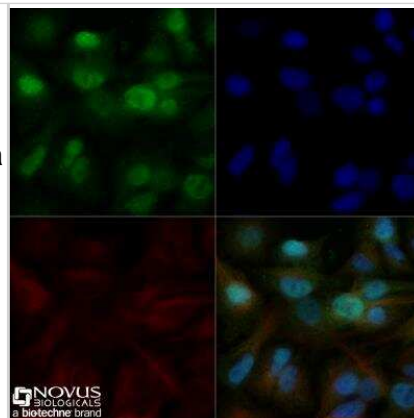
Product Application Details	
Applications	Western Blot, Immunohistochemistry-Paraffin, Immunocytochemistry/Immunofluorescence, Immunohistochemistry
Recommended Dilutions	Western Blot 1 - 2 ug/ml, Immunohistochemistry 2 - 5 ug/ml, Immunocytochemistry/ Immunofluorescence 5 - 10 ug/ml, Immunohistochemistry-Paraffin 2 - 5 ug/ml
Application Notes	The observed molecular weight of the protein may vary from the listed predicted molecular weight due to post translational modifications, post translation cleavages, relative charges, and other experimental factors.

Images

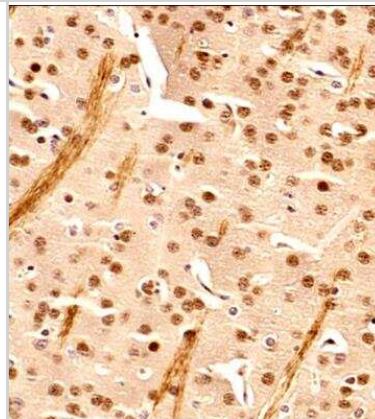
Western Blot: EGR2 Antibody [NB100-92327] - Analysis of pAb at 1:500 dilution Lane1:HEK293T whole cell lysate(40ug) Lane2:PC12 whole cell lysate(40ug) Lane3:NIH-3T3 whole cell lysate(40ug) Lane3:Jurkat whole cell lysate(40ug)



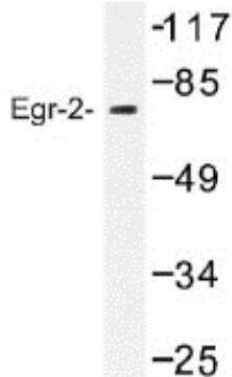
Immunocytochemistry/Immunofluorescence: EGR2 Antibody [NB100-92327] - HepG2 cells were fixed for 10 minutes using 10% formalin and then permeabilized for 5 minutes using 1X TBS + 0.5% Triton-X100. The cells were incubated with anti-EGR2 at 5ug/ml overnight at 4C and detected with an anti-rabbit Dylight 488 (Green) at a 1:500 dilution. Alpha tubulin (DM1A) NB100-690 was used as a co-stain at a 1:1000 dilution and detected with an anti-mouse Dylight 550 (Red) at a 1:500 dilution. Nuclei were counterstained with DAPI (Blue). Cells were imaged using a 40X objective.



Immunohistochemistry-Paraffin: EGR2 Antibody [NB100-92327] - IHC analysis of a formalin fixed and paraffin embedded tissue section of mouse brain using EGR2 antibody at 1:200 dilution. The signal was detected using HRP-conjugated anti-rabbit secondary antibody and DAB based detection reagent, and the sections were further counterstained with hematoxylin. This EGR2 antibody generated primarily a nuclear staining signal in the neurons and the glial cells, however, some cytoplasmic staining was also observed. The cytoplasmic signal potentially represents the translational or 14-3-3sigma interacting cytoplasmic pool of EGR2.



Western Blot: EGR2 Antibody [NB100-92327] - Egr-2 Antibody in extracts from HUVEC cells.



ERG2 was detected in immersion fixed Hep G2 human hepatocellular carcinoma cell line using Rabbit anti-ERG2 Affinity Purified Polyclonal Antibody conjugated to Alexa Fluor® 647 (Catalog # NB100-92327AF647) (light blue) at 10 µg/mL overnight at 4C. Cells were stained counterstained with DAPI (blue). Cells were imaged using a 40X objective.



Copyright © 2024 Novus Biologicals, a Bio-Techne Brand

Publications

Han SH, Kim YH, Park SJ, Cho JG et Al. COUP-TFII plays a role in cAMP-induced Schwann cell differentiation and in vitro myelination by up-regulating Krox20 J Neurochem 2023-01-17 [PMID: 36648143]

Zhang Y, Feng W, Wang Z et Al. Early growth response 2 in the mPFC regulates mouse social and cooperative behaviors Lab Anim (NY) 2023-02-08 [PMID: 36646797]

Xiao M, Zhang Y, Feng W et al. Early growth response 2 regulates mouse cooperative behavior Research Square 2020-12-02 (ICC/IF, Mouse)





Novus Biologicals USA

10730 E. Briarwood Avenue
Centennial, CO 80112
USA
Phone: 303.730.1950
Toll Free: 1.888.506.6887
Fax: 303.730.1966
nb-customerservice@bio-techne.com

Bio-Techne Canada

21 Canmotor Ave
Toronto, ON M8Z 4E6
Canada
Phone: 905.827.6400
Toll Free: 855.668.8722
Fax: 905.827.6402
canada.inquires@bio-techne.com

Bio-Techne Ltd

19 Barton Lane
Abingdon Science Park
Abingdon, OX14 3NB, United Kingdom
Phone: (44) (0) 1235 529449
Free Phone: 0800 37 34 15
Fax: (44) (0) 1235 533420
info.EMEA@bio-techne.com

General Contact Information

www.novusbio.com
Technical Support: nb-technical@bio-techne.com
Orders: nb-customerservice@bio-techne.com
General: novus@novusbio.com

Products Related to NB100-92327

NBP2-33376H	Blue Marker Antibody (6F4-F6) [HRP]
HAF008	Goat anti-Rabbit IgG Secondary Antibody [HRP]
NB7160	Goat anti-Rabbit IgG (H+L) Secondary Antibody [HRP]
NBP2-24891	Rabbit IgG Isotype Control

Limitations

This product is for research use only and is not approved for use in humans or in clinical diagnosis. Primary Antibodies are guaranteed for 1 year from date of receipt.

For more information on our 100% guarantee, please visit www.novusbio.com/guarantee

Earn gift cards/discounts by submitting a review: www.novusbio.com/reviews/submit/NB100-92327

Earn gift cards/discounts by submitting a publication using this product:
www.novusbio.com/publications

